



For Sublease | ±7,077 SF

Ground Floor Medical Space

1720 El Camino Real, Suite 1 | Burlingame, CA

Highlights



Located Across
from Mid-Peninsula
Hospital



Ideal for Medical Groups,
Clinics, Surgery Centers &
Related Medical Services



Garage and Surface
Parking



Easy Access from El
Camino Real



Accelerating success.

Contact Broker

René Brochier

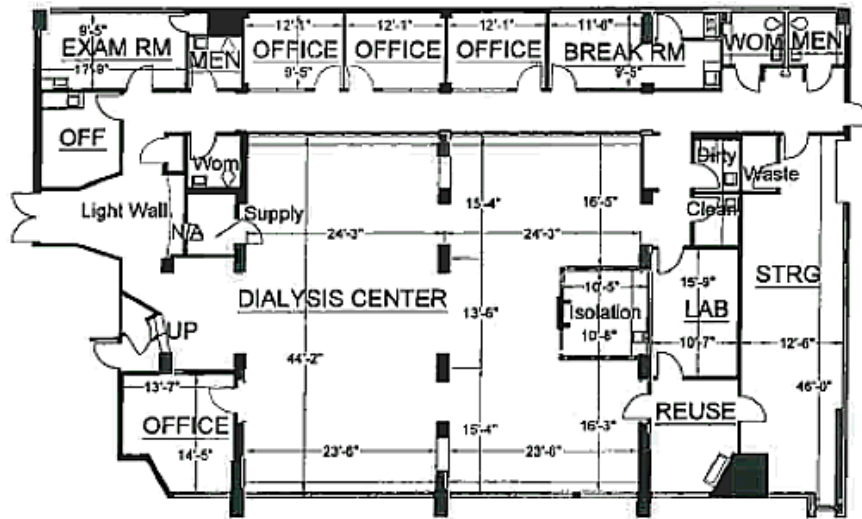
Senior Vice President
CA License No. 00663110
rene.brochier@colliers.com
+1 925 227 6242



1720 El Camino Real | Burlingame, CA

Floor Plan

±7,077 SF



Copyright © 2024 Colliers.
Information herein has been obtained from sources deemed reliable, however its accuracy cannot be guaranteed.
The user is required to conduct their own due diligence and verification.

1720 El Camino Real | Burlingame, CA

Location Overview



Demographics *5 mile radius*



199,489
Total Population



2.5%
Population Growth
Since 2010



40.8
Median Age
(Years)



24,563
Current Total
Households

1720 El Camino Real | Burlingame, CA

Photo Gallery

