

FOR SALE/LEASE FLYER
MEDICAL OFFICE CONDO



3231 WARING COURT
OCEANSIDE, CALIFORNIA

CIRE | Partners
COMMERCIAL INVESTMENT REAL ESTATE

TABLE OF CONTENTS

Property Details & Highlights	3
Floor Map	4
Site Plan	5
Property Photos	6
Aerial Map	7
Regional Map	8
Demographics	9
Market Overview	10

CONFIDENTIALITY & DISCLAIMER

THE INFORMATION CONTAINED IN THE FOLLOWING OFFERING MEMORANDUM IS PROPRIETARY AND STRICTLY CONFIDENTIAL. IT IS INTENDED ONLY TO BE REVIEWED BY THE PARTY RECEIVING IT FROM CIRE BROKERAGE SERVICES INC. DBA CIRE PARTNERS (HEREAFTER "CIRE PARTNERS") AND SHOULD NOT BE MADE AVAILABLE TO ANY OTHER PERSON OR ENTITY WITHOUT THE WRITTEN CONSENT OF CIRE PARTNERS. THIS OFFERING MEMORANDUM HAS BEEN PREPARED TO PROVIDE SUMMARY, UNVERIFIED INFORMATION TO PROSPECTIVE PURCHASERS, AND TO ESTABLISH ONLY A PRELIMINARY LEVEL OF INTEREST IN THE SUBJECT PROPERTY. THE INFORMATION CONTAINED HEREIN IS NOT A SUBSTITUTE FOR A THOROUGH DUE DILIGENCE INVESTIGATION.

CIRE PARTNERS HAS NOT MADE ANY INVESTIGATION AND MAKES NO WARRANTY OR REPRESENTATION, WITH RESPECT TO THE INCOME OR EXPENSES FOR THE SUBJECT PROPERTY, THE FUTURE PROJECTED FINANCIAL PERFORMANCE OF THE PROPERTY, THE SIZE AND SQUARE FOOTAGE OF THE PROPERTY AND IMPROVEMENTS, THE PRESENCE OR ABSENCE OF CONTAMINATING SUBSTANCES, PCB'S OR ASBESTOS, THE COMPLIANCE WITH STATE AND FEDERAL REGULATORS, THE PHYSICAL CONDITION OF THE IMPROVEMENTS THEREON, OR THE FINANCIAL CONDITION OR BUSINESS PROSPECTS OF ANY TENANT, OR ANY TENANT'S PLANS OR INTENTIONS TO CONTINUE ITS OCCUPANCY OF THE SUBJECT PROPERTY.

THE INFORMATION CONTAINED IN THIS OFFERING MEMORANDUM HAS BEEN OBTAINED FROM SOURCES WE BELIEVE TO BE RELIABLE; HOWEVER, CIRE PARTNERS HAS NOT VERIFIED, AND WILL NOT VERIFY, ANY OF THE INFORMATION CONTAINED HEREIN, NOR HAS CIRE PARTNERS CONDUCTED ANY INVESTIGATION REGARDING THESE MATTERS AND MAKES NO WARRANTY OR REPRESENTATION WHATSOEVER REGARDING THE ACCURACY OR COMPLETENESS OF THE INFORMATION PROVIDED.

ALL POTENTIAL BUYERS MUST TAKE APPROPRIATE MEASURES TO VERIFY ALL OF THE INFORMATION SET FORTH HEREIN. THIS IS NOT AN APPRAISAL. PLEASE CONSULT YOUR CIRE PARTNERS AGENT FOR MORE DETAILS. THE INFORMATION CONTAINED HEREIN WAS OBTAINED FROM SOURCES BELIEVED RELIABLE, HOWEVER, CIRE PARTNERS MAKES NO GUARANTIES, WARRANTIES OR REPRESENTATIONS AS TO THE COMPLETENESS THEREOF.

THIS DOCUMENT HAS BEEN PREPARED BY CIRE PARTNERS FOR ADVERTISING AND GENERAL INFORMATION ONLY. CIRE PARTNERS EXCLUDES UNEQUIVOCALLY ALL INFERRED OR IMPLIED TERMS, CONDITIONS AND WARRANTIES ARISING OUT OF THIS DOCUMENT AND EXCLUDES ALL LIABILITY FOR LOSS AND DAMAGES ARISING THERE FROM.

Andrew Slade
Executive Vice President
619.277.4202
aslade@cirepartners.com
License #01746250

CIRE Brokerage Services Inc. dba CIRE Partners - CA DRE #01526823

PROPERTY DETAILS

GENERAL SUMMARY

Address	3231 Waring Ct, Oceanside, CA 92056
APN	166-560-23-52
Building Size	±1,456 SF
Parcel Size	±1.84 AC (±80,000 SF)
Year Built	1974
Number of Buildings	One (1)
Parking	±117 Spaces (80.36 per 1,000 SF)
Zoning	Commercial Professional (CP)
Traffic Counts	Waring Rd: ±3,956 ADT State Route 78: ±142,984 ADT

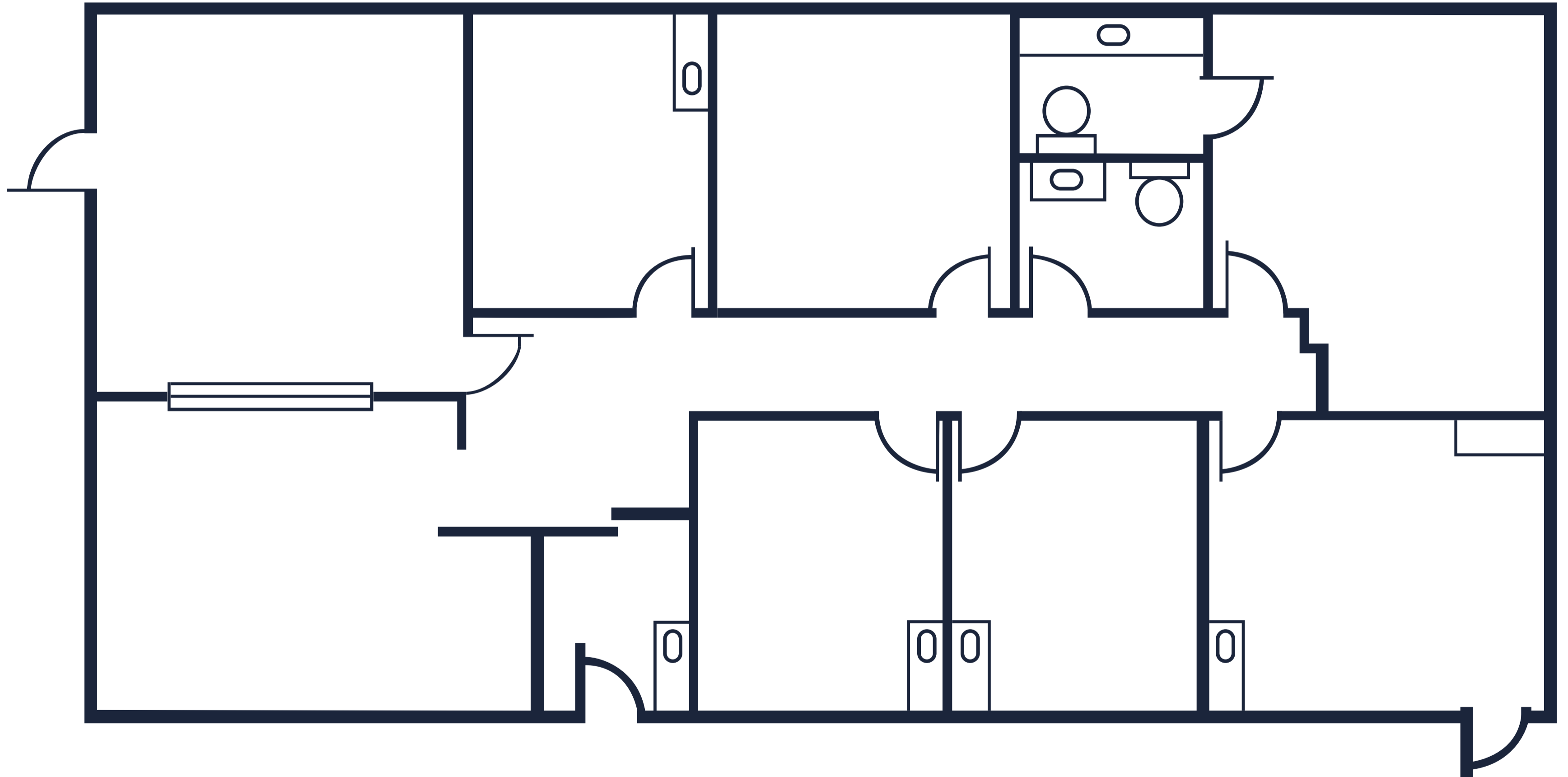
ASKING PRICE
\$475,000

ASKING RENT
\$3.00/SF NNN

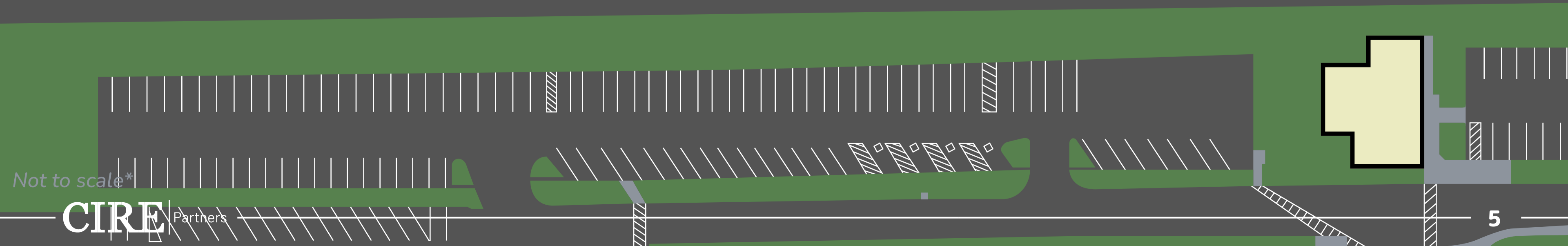
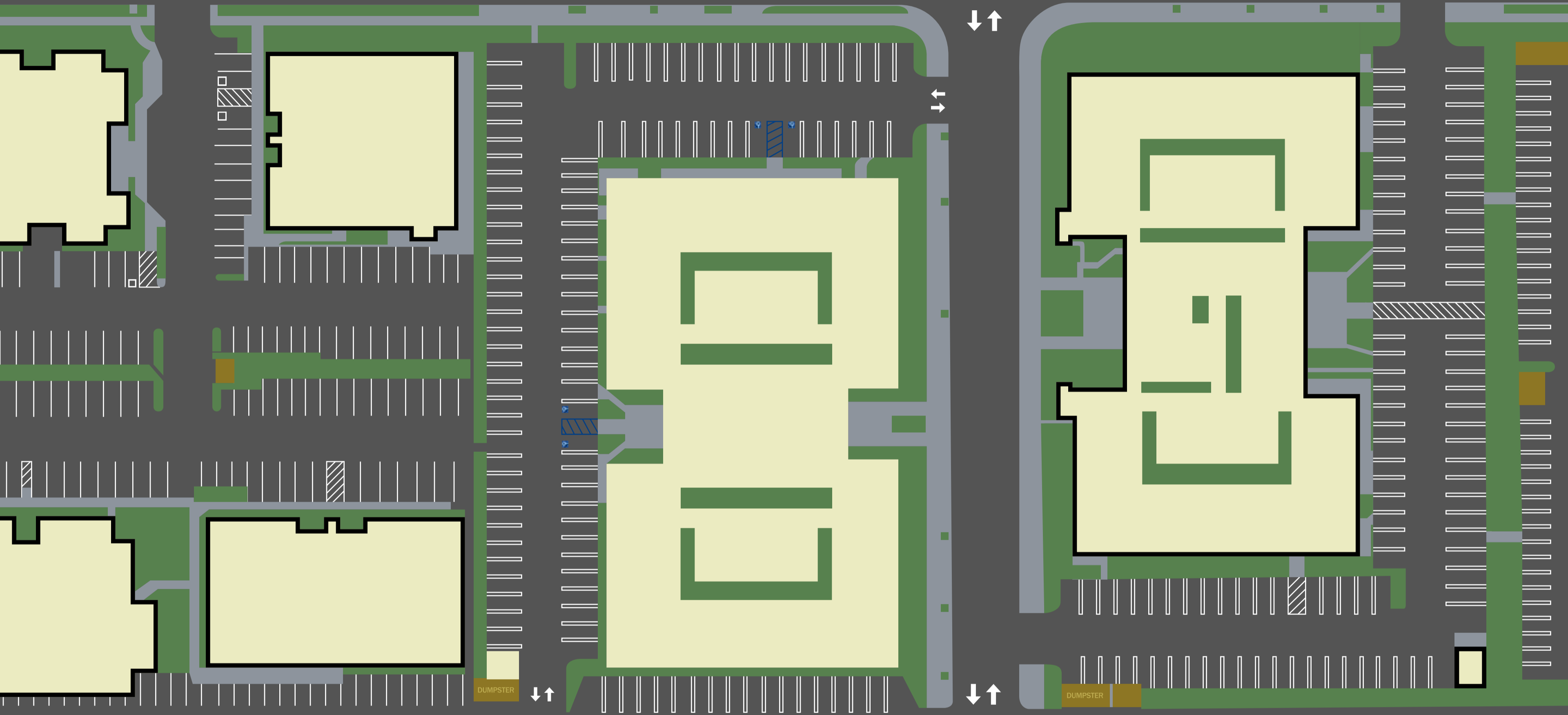
- Fully upgraded and modernized medical office condo.
- Prime location at property entrance, offering high visibility and easy access.
- Approximately 1,456 RSF of well-designed medical space.
- Spacious waiting area and large receptionist station with built-in counters.
- Four exam rooms and one large operatory room for versatile clinical use.
- Direct walkway access from property parking lot to Tri-City Hospital.
- Corner physician's office with private restroom for added privacy and convenience.
- Secondary restroom accessible from the main hallway for patient use.
- Kitchenette adjacent to reception area with a private exterior entrance.
- Strategically located north of Hwy-78, adjacent to Tri-City Hospital.



FLOOR MAP

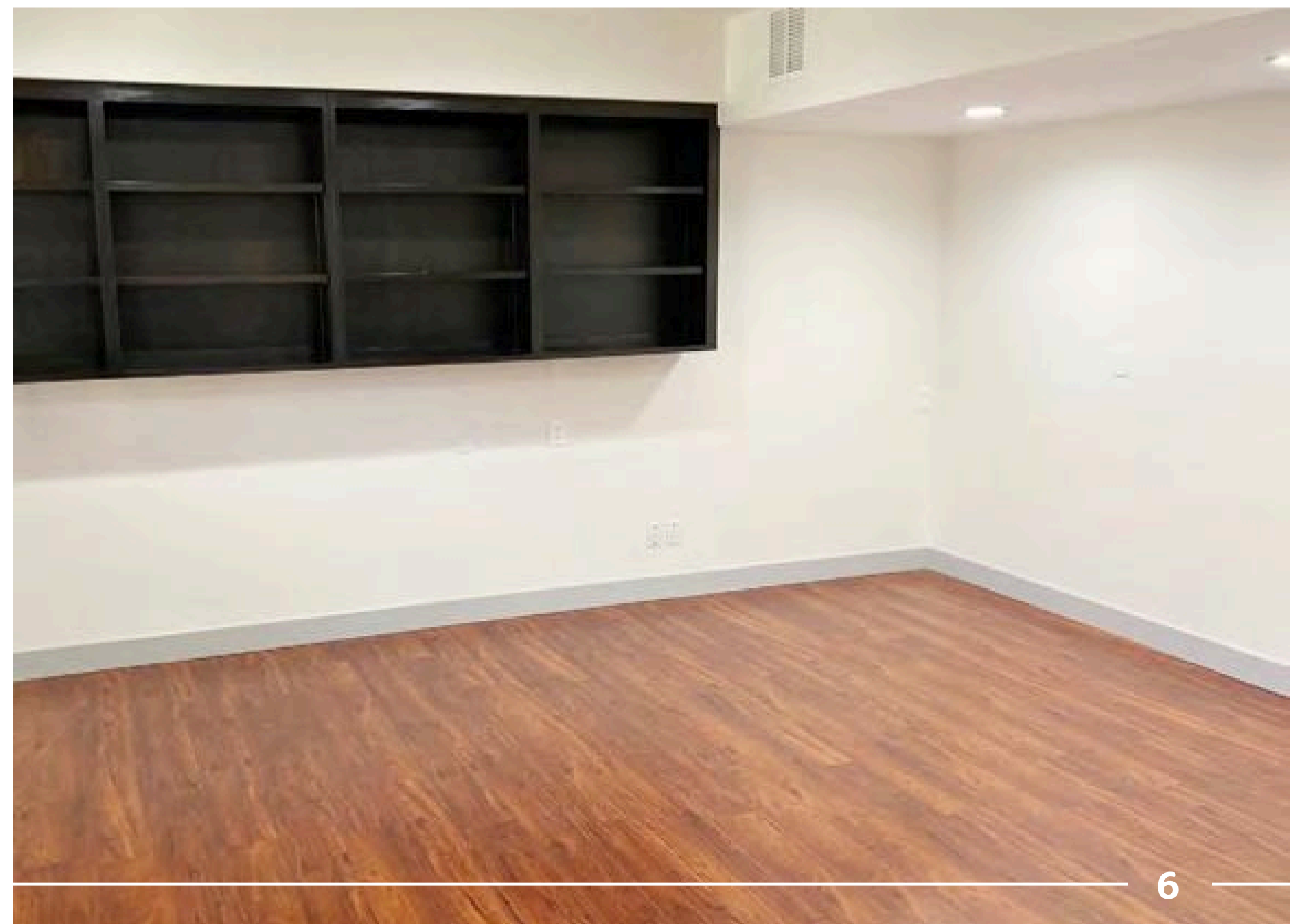


SITE PLAN



Not to scale*

PROPERTY PHOTOS



AERIAL MAP



FRAZIER FARMS
SUBWAY
DUNKIN'
IHOP
BLACK & ROCK
COFFEE BAR
jiffylube

EL CAMINO NORTH
 ±491,000 SF | 6M ANNUAL VISITS | TOP 3%

Burlington
Wells Fargo
Chili's
Wendy's
Walmart
Tilly's
DAISO
BARNES & NOBLE
ROSS
LA BOY
Wings
DRESS FOR LESS
AMERICAN FREIGHT
ULTA
TRUPLY HOME
BOOT BARN
MATTRESS FIRM
menchie's
GameStop
Michaels
FAMOUS footwear
LAIFITNESS
THE VITAMIN SHOPPE

PACIFIC COAST PLAZA
 ±456,000 SF | 5.3M ANNUAL VISITS | TOP 4%

Walmart
BEST BUY
Starbucks
Rack
Chevron
DICK'S
SPORTING GOODS
five
BELW
petco
McDonald's
ExtraMile
OLD NAVY
Applebee's
STAPLES
WORLD MARKET

Dollar Tree
HER BLOCK
verizon
Olive Garden
Orangetheory
SALLY BEAUTY
Marshall's

THE SHOPPES AT CARLSBAD
 ±567,100 SF | 6.1M ANNUAL VISITS | TOP 3%

24 Hour Fitness
fye
Foot Locker
H&M
STRENGTH
Bath & Body Works
FOREVER 21
TEXAS de BRAZIL
Yard House
EXPRESS
CHORRASCARIA & STEAKHOUSE
AMERICAN EAGLE OUTFITTERS
Firestone
JCPenney
The Cheesecake Factory
SEPHORA
REGAL
SHOEPALACE
Luna Grill
VANS
HOLLISTER
KAY JEWELERS
PINK claire's
Daniels
zumiez
Victoria's Secret
Seneca's
ZARA
HOT TOPIC
WINDSOR
ZALES
THE RED CHICK
EST. 2014

SPROUTS FARMERS MARKET
rubio's
Jersey Mike's
UPS
TRAT FLAKE
KAHOOTS
Carl's Jr.

CARLSBAD HIGH SCHOOL
 ±2,290 STUDENTS

MAGNOLIA ELEMENTARY
 ±500 STUDENTS

VALLEY MIDDLE SCHOOL
 ±866 STUDENTS

Agave at The Preserve
 ±88 2-STORY TOWNHOMES

Blue Sage at The Preserve
 ±102 2-STORY TRIPLEX HOMES

Marisol Apartments
 ±278 APARTMENT HOMES

Ocean Terrace Professional Center

Walmart
Albertsons
SUPERCUTS
PETSMART
WELLS FARGO
UPS
Chevron

TARGET JOANN
WinCo FOODS
Denny's
DEL TACO
the Habit BURGER GRILL
Starbucks
AutoZone
sleep number
DISCOUNT TIRE
JAZZERCISE

TRADER JOE'S
Jack
In the box
BevMO!
FedEx
AT&T
LAMPS PLUS

iFLY

5.11

extended STAY AMERICA

VONS CVS pharmacy
CHASE
Shell
Chevron
SPIRITO'S
MOOYAH
ExtraMile

AAA

Nissan

76

TJ-maxx
Sizzler
RITE AID
Dollar Tree
TACO BELL

GROCERY OUTLET
 "bargain market"
Starbucks
Pollo Loco
HOBBY LOBBY

DOWNTOWN SAN DIEGO
 ±40 Minutes | ±38 Miles

SAGE CREEK HIGH SCHOOL
 ±1,392 STUDENTS

SUBJECT PROPERTY

REGIONAL MAP

SUBJECT PROPERTY



DEMOGRAPHICS

Population	1 Mile	3 Miles	5 Miles
Population (2024)	24,545	130,211	315,908
Projected Population (2029)	24,440	131,299	317,622
Median Age (2024)	37.3	40.0	39.1

Income	1 Mile	3 Miles	5 Miles
Average Household Income (2024)	\$116,498	\$132,613	\$131,521
Projected Average Household Income (2029)	\$139,076	\$154,608	\$153,757
Projected Annual Growth (2024-2029)	3.61%	3.12%	3.17%
Wealth Index (2024)	94	121	117

Households	1 Mile	3 Miles	5 Miles
Households (2024)	8,678	48,269	113,638
Projected Households (2029)	8,807	49,719	116,654
Annual Growth (2020-2024)	0.01%	0.45%	0.43%
Projected Annual Growth (2024-2029)	0.30%	0.59%	0.53%
Average Household Size (2024)	2.75	2.66	2.75

OCEANSIDE, CA



4.4%
Greatest Gen
 Born in 1945/Earlier



18.6%
Baby Boomer
 Born in 1946 to 1964



19.3%
Generation X
 Born in 1965 to 1980



25.8%
Millennial
 Born in 1981 to 1998



23.2%
Generation Z
 Born in 1999 to 2016



8.8%
Alpha
 Born in 2017 to Present

MARKET OVERVIEW

Oceanside, CA

Oceanside, California, is a vibrant coastal city in northern San Diego County, celebrated for its stunning beaches, laid-back lifestyle, and rich history. Located halfway between San Diego and Los Angeles, Oceanside offers a unique blend of small-town charm and metropolitan accessibility, making it an attractive destination for residents, businesses, and tourists alike.

With a population of approximately 176,000 residents and spanning 42 square miles, Oceanside is strategically situated along the Pacific Coast, with easy access to Interstate 5 and the Sprinter rail line, connecting the city to nearby economic hubs. Its coastal location and excellent transportation infrastructure make Oceanside a desirable place for commuters and businesses while preserving its relaxed, seaside atmosphere.

Oceanside has a deep-rooted history, dating back to its founding in 1888, and is known for its connection to the historic Mission San Luis Rey, one of California's 21 Spanish missions. The city's downtown district has undergone significant revitalization in recent years, blending historic landmarks with modern developments, trendy restaurants, boutique shops, and art galleries, creating a dynamic urban core.

Outdoor recreation is at the heart of Oceanside's appeal. Residents and visitors enjoy miles of sandy beaches, ideal for surfing, swimming, and sunbathing, as well as a scenic harbor offering opportunities for boating, fishing, and waterfront dining. The city is also home to several parks and trails, including Guajome Regional Park and the San Luis Rey River Trail, which cater to hikers, cyclists, and nature enthusiasts.

The economy in Oceanside is diverse, with strong sectors in tourism, healthcare, retail, and manufacturing. Camp Pendleton, a major Marine Corps base located just north of the city, plays a significant role in the local economy, providing employment and supporting local businesses. Oceanside's thriving tourism industry is driven by its beautiful beaches, year-round mild climate, and coastal attractions such as the Oceanside Pier, one of the longest wooden piers on the West Coast.

Oceanside's population has grown to over 176,000, making it the 3rd largest city in San Diego County
In FY2022, tourism revenue in Oceanside totaled \$81 million, up 87.3% from the previous year
Oceanside boasts a strong coastal appeal, with growing investments in infrastructure for tourism
Projects like the Frontwave Arena developments contribute to significant economic activity



3231
WARING COURT

Andrew Slade

Executive Vice President
619.277.4202
aslade@cirepartners.com
License #01746250

CIRE Brokerage Services Inc. dba CIRE Partners - CA DRE #01526823

www.CIREpartners.com