

industrial/flex  
for  
**LEASE**

2 units available  
unit b+c: 5,000 sf  
unit h: 2,500 sf

**\$16.95/sf nnn**

- + **primary:** industrial
- + **bulding:** 25,000 sf
- + **land:** 1.88 ac
- + **zoning:** i-3 i-5
- + **built:** 1986
- + **parking:** 55 spaces

unit h  
2,500 SF

unit b+c  
5,000 SF



7006 stapoint ct  
orlando, florida 32806

patrick goetz  
vice president  
(407) 734.7210  
pat@BBDRE.com



Bishop Beale Duncan  
COMMERCIAL REAL ESTATE



unit h  
2,500 SF

unit b+c  
5,000 SF

## highlights

located off  
stapoint ct near  
forsythe and  
semoran blvd

- great location
- ideal size
- includes a large work area under air conditioning
- 9 x 12 ground-level bay door



250 N. Orange Ave., Ste. 500  
Orlando, FL 32801  
+ (407) 426.7702  
[www.BBDRE.com](http://www.BBDRE.com)

This offer is subject to errors, omissions, prior sale or withdrawal without notice.



for more information, contact patrick goetz vice president (407) 734.7210 [pat@BBDRE.com](mailto:pat@BBDRE.com)

# location aerial



aerial



the property



stapoint



for more information, contact patrick goetz vice president (407) 734.7210 pat@BBDRE.com

# unit b+c front elevation

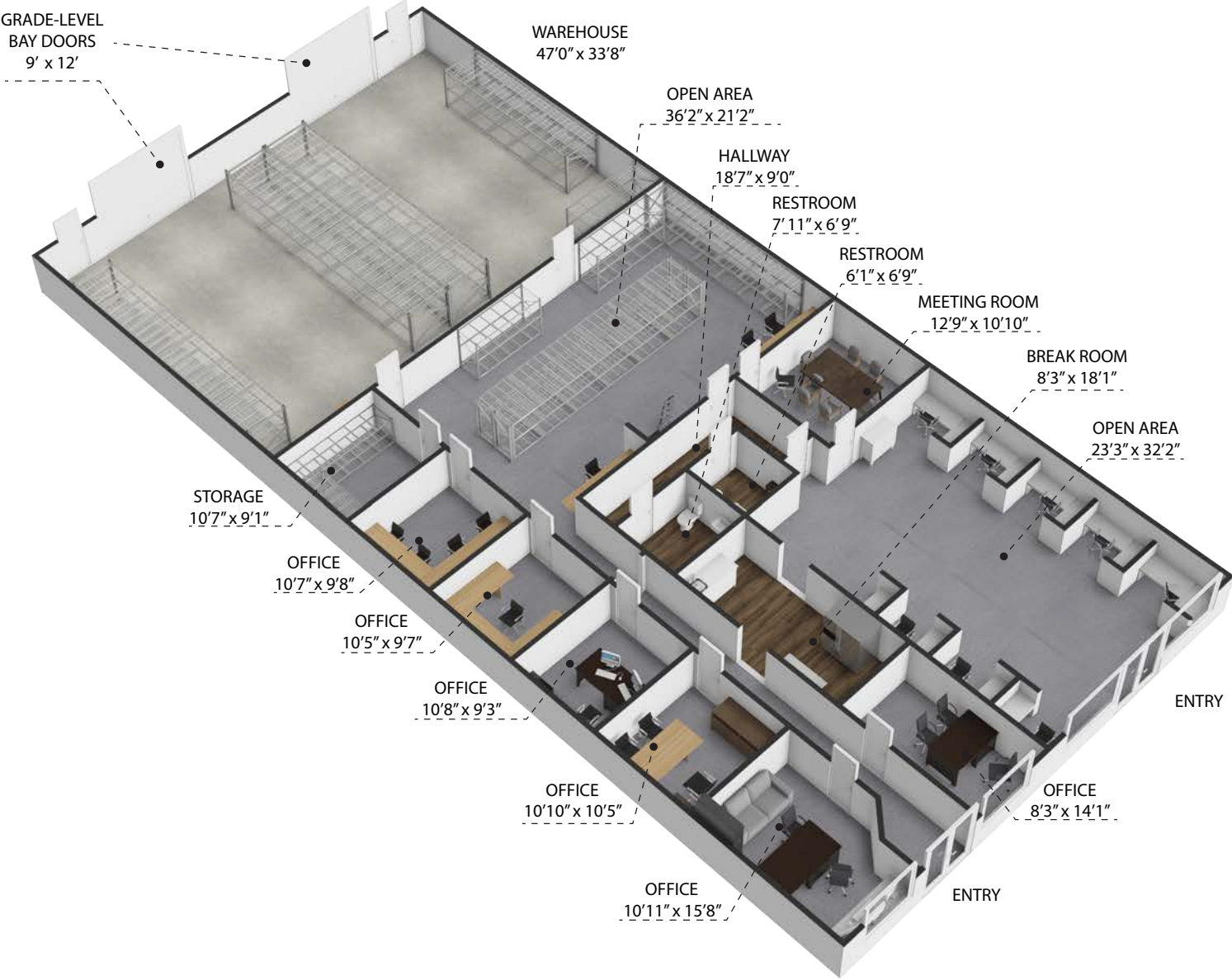


unit b+c  
5,000 SF

exterior

for more information, contact patrick goetz vice president (407) 734.7210 pat@BBDRE.com

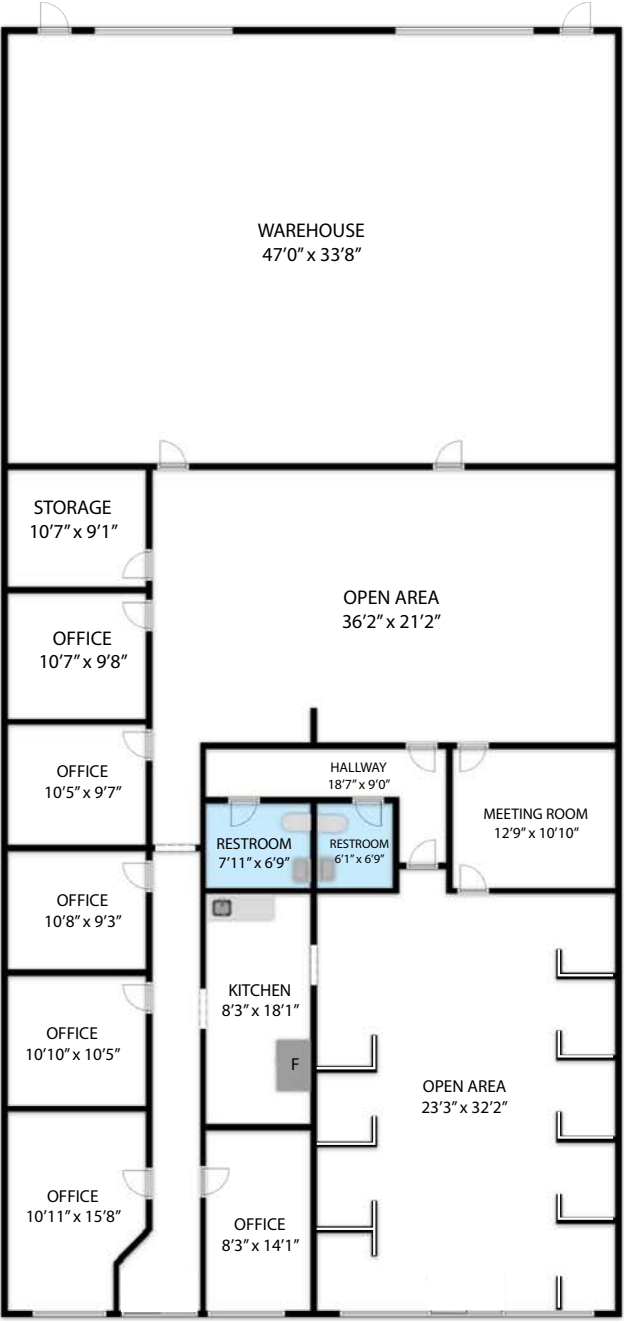
unit b+c | 5,000 sf



3d layout



unit b + c | 5,000 sf



floor plan



# unit b+c back elevation



unit b+c  
5,000 SF

exterior

# unit b+c interior



reception



office



break area



warehouse

interiors



for more information, contact patrick goetz vice president (407) 734.7210 pat@BBDRE.com

# unit h front elevation

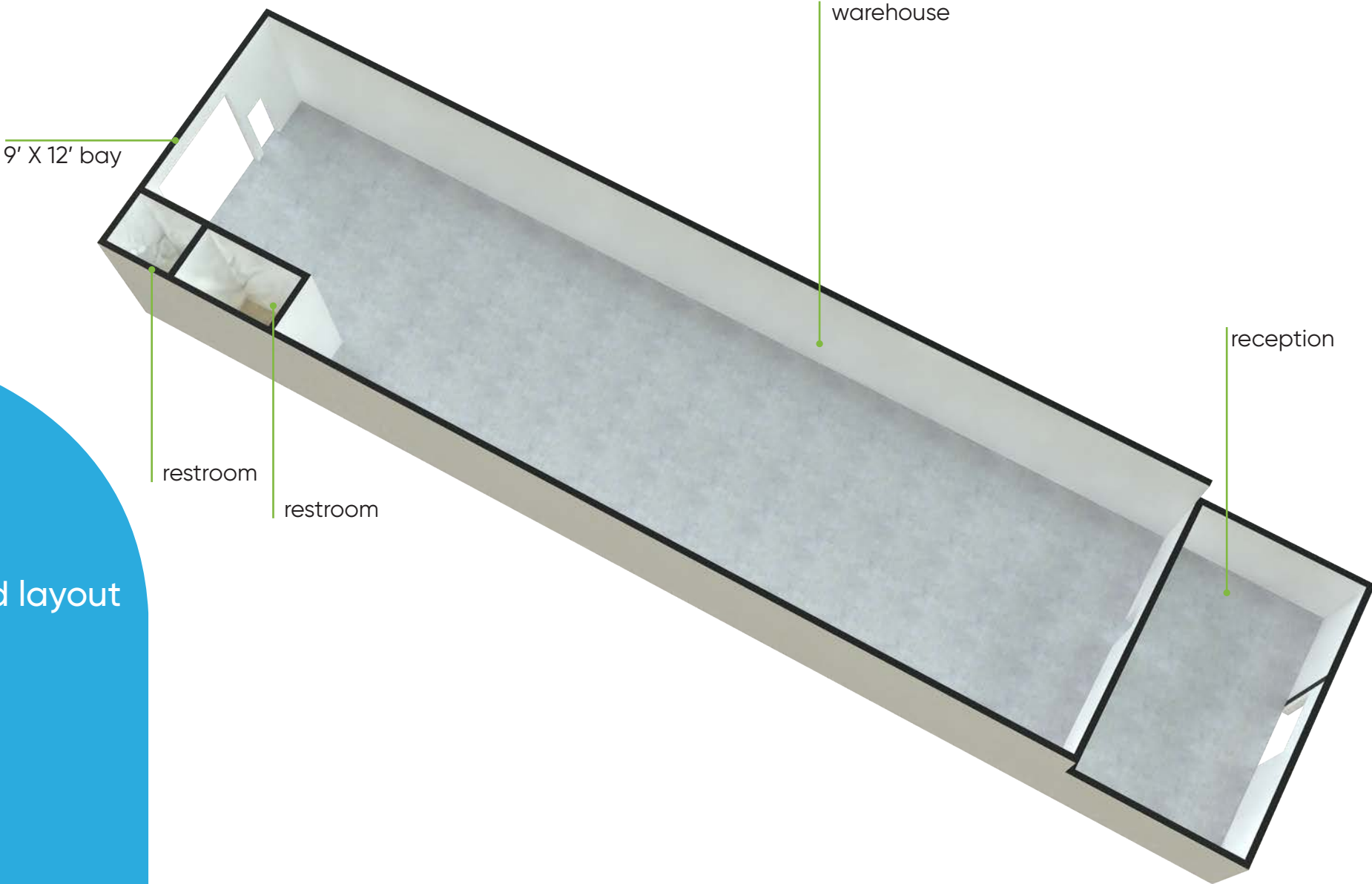


unit h  
2,500 SF

exterior

for more information, contact patrick goetz vice president (407) 734.7210 pat@BBDRE.com

unit h | 2,500 sf



3d layout



unit h | 2,500 sf



floor plan

FLOOR 1



for more information, contact patrick goetz vice president (407) 734.7210 pat@BBDRE.com

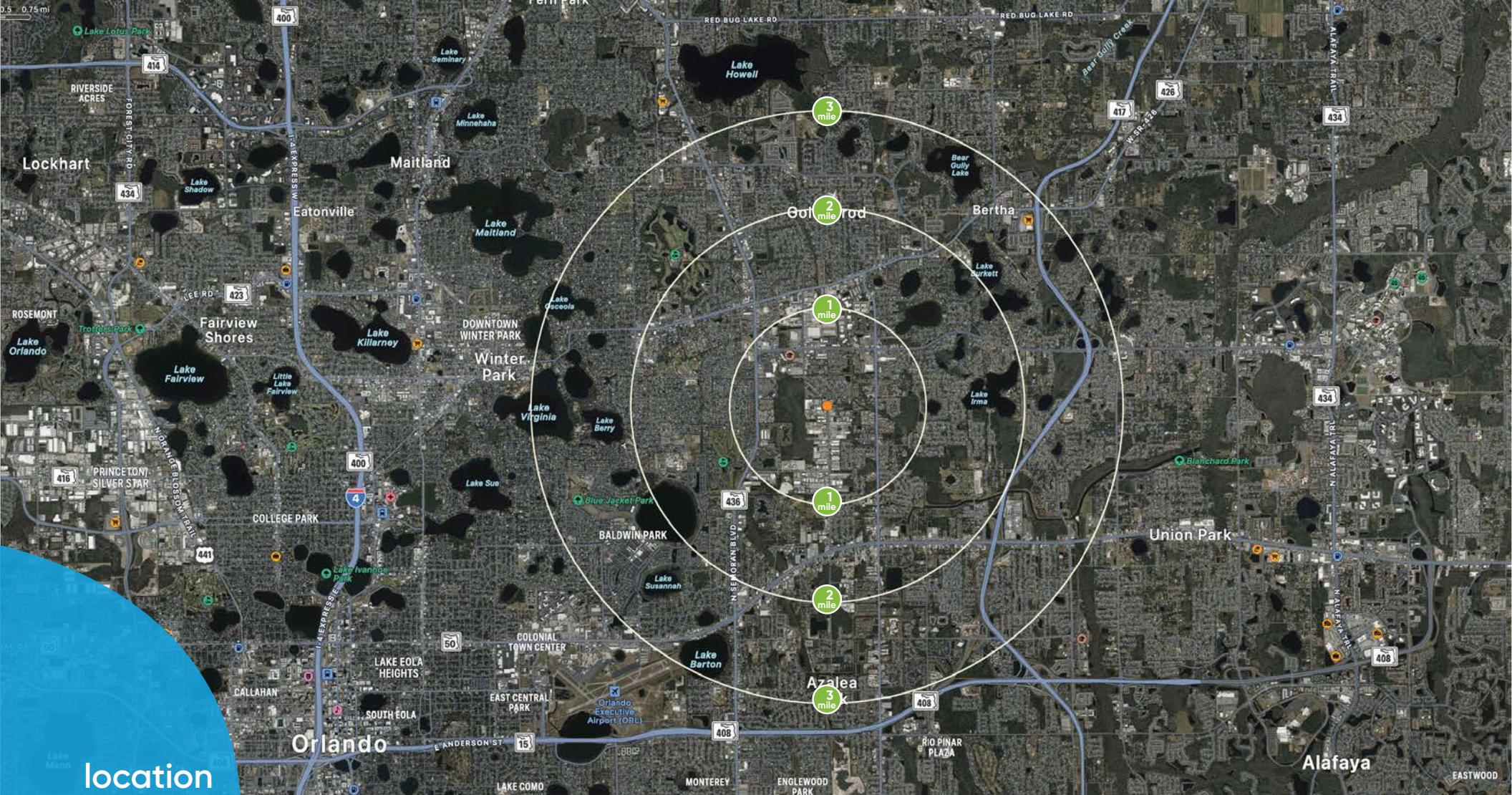
# unit h back elevation



unit h  
2,500 SF

exterior

for more information, contact patrick goetz vice president (407) 734.7210 pat@BBDRE.com



location  
map



### demographics

Radius	Population	HH Income	Businesses	Employees
1-Mile	13,376	\$69,951	1,120	10,572
2-Mile	49,937	\$80,827	3,831	27,991
3-Mile	107,846	\$90,257	6,290	44,009



for more information, contact patrick goetz vice president (407) 734.7210 pat@BBDRE.com