

GROCERY ANCHORED RETAIL SPACE FOR LEASE

130 Cedar St | Cambridge



Cedar Street

SUBURBAN RETAIL TEAM

CBRE

Unit Detail



Prime Location

Situated along Cedar Street with exceptional street frontage, the property is located within a well-established residential area of Cambridge, offering strong visibility and a large, consistent customer base from the immediate trade area.



Co-Tenancy with Major Brands

Located within a high-traffic, grocery-anchored plaza featuring well-known national tenants such as Sobeys, LCBO, Shoppers, Dollarama, TD Bank, and Tim Hortons.



Ample Parking & Functional Access

The unit benefits from parking directly in front, providing convenient customer access, along with a dedicated loading dock to support efficient operations and deliveries.



Excellent Regional Access

The property offers excellent access adjacent to the plaza entrance, strategically positioned within a dense residential neighbourhood and serving as a primary, convenient retail destination for thousands of nearby households.

Retail Unit

52

Unit Size

5,743 Sq. Ft.

238 Sq. Ft. Mezz not included in GLA

Parking Surface

Net Rent

\$32.00 Per Sq. Ft.

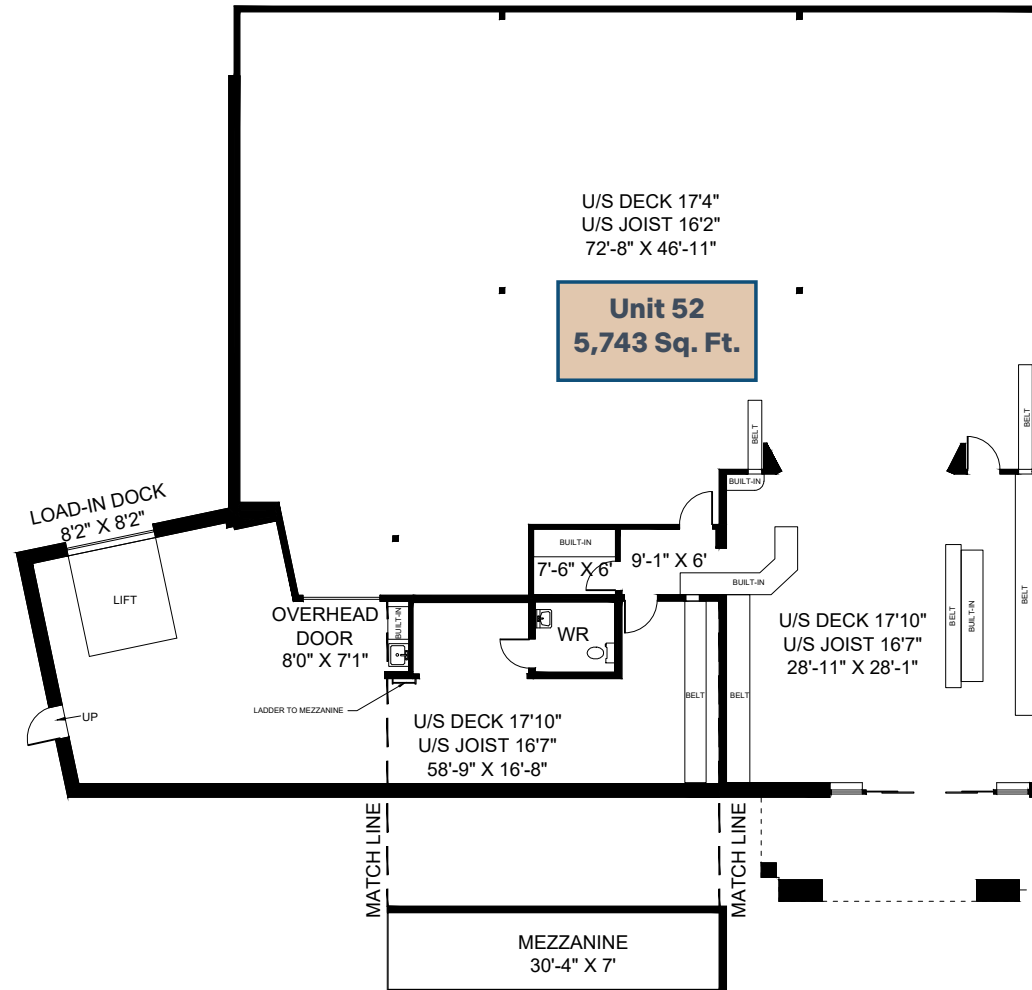
TMI (2026)

\$13.30 Per Sq. Ft.

Possession Date

Immediate

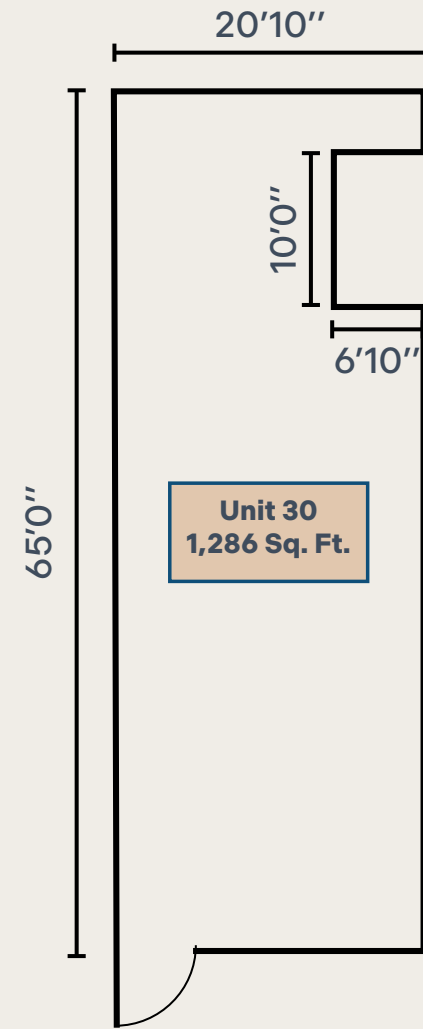
Floor Plan



Cedar St

238 Sq. Ft. Mezz not included in GLA

Unit Detail & Floor Plan



Retail Unit
30

Unit Size
1,286 Sq. Ft.

Possession Date
October 1st 2026

Net Rent
\$43.00 Per Sq. Ft.

TMI (2026)
\$13.30 Per Sq. Ft.

Cedar St

Co-Tenants



Site Photo



Amenities & Location



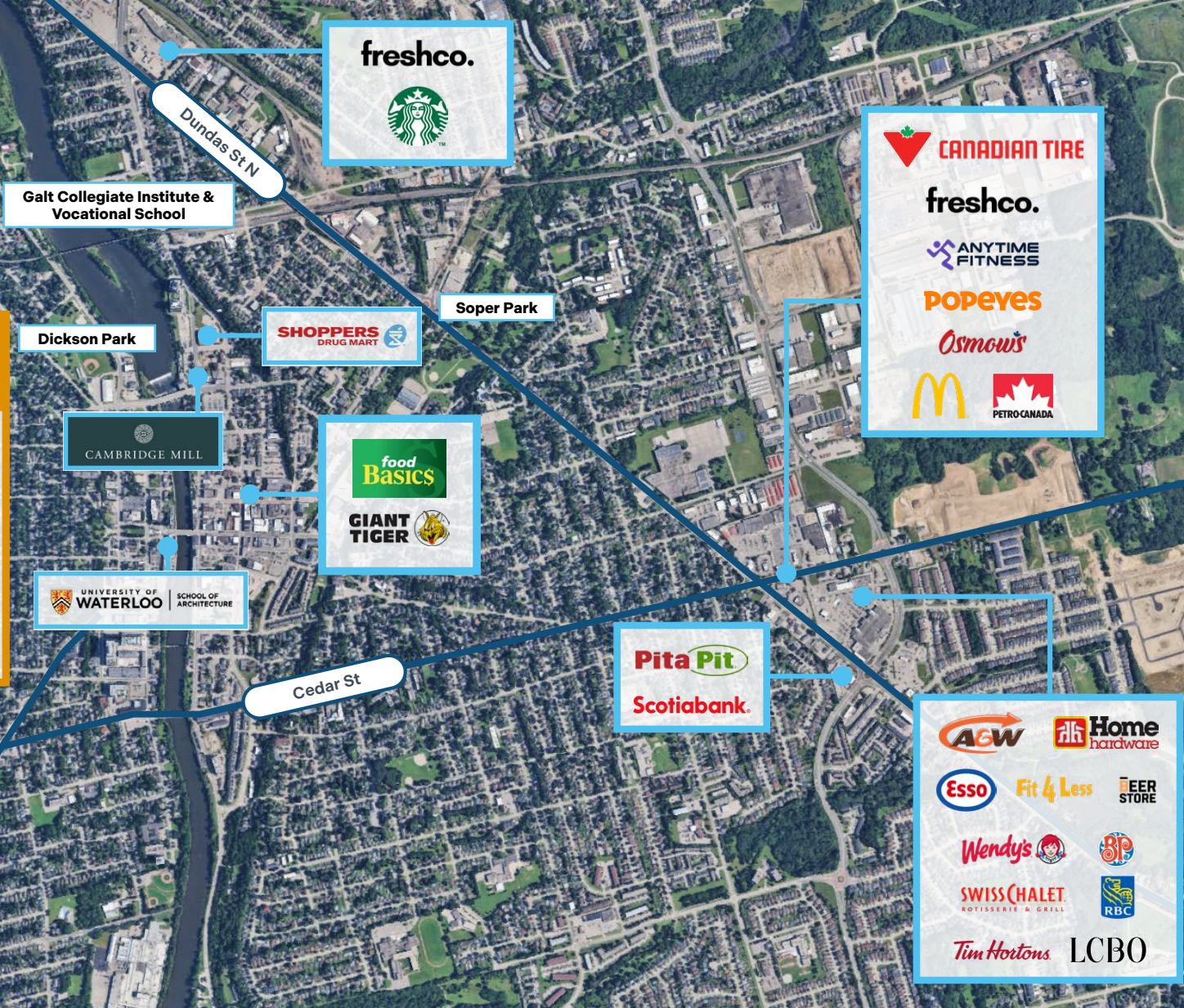
DAILY TRAFFIC COUNT

27,324

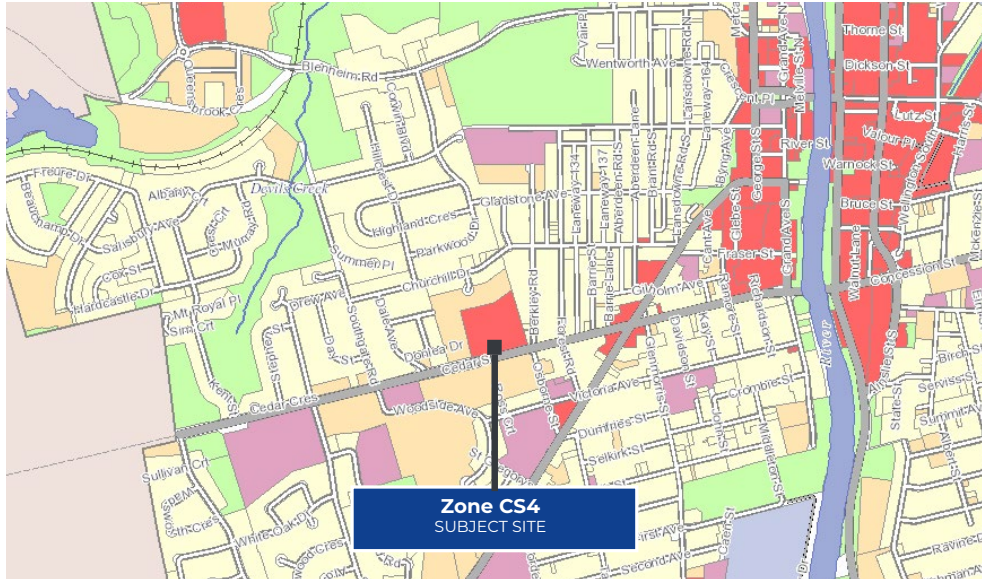
Cedar St & Andrews St

SUBJECT SITE

APPROX. 10-15 MIN. DRIVE TO MAJOR COMMERCIAL HUBS



Permitted Uses & Zoning



PERMITTED COMMERCIAL USES INCLUDING, BUT NOT LIMITED TO:

RETAIL COMMERCIAL ESTABLISHMENTS

- » A neighbourhood grocery store¹
- » A neighbourhood variety store¹
- » Any retail commercial establishment¹
- » Any retail commercial establishment described in section 3.3.2.1

SERVICE COMMERCIAL ESTABLISHMENTS

- » A hairdressing establishment
- » Any business and professional office described in section 3.3.2.2
- » A food services establishment including a cart
- » A laundry or dry cleaner's establishment but not a dry cleaning plant
- » A hotel or motel
- » An automobile service station or gas bar
- » Any other service commercial establishment described in section 3.3.2.2

COMMERCIAL RECREATIONAL ESTABLISHMENTS

- » A place of amusement as described in section 3.3.2.4 except an amusement arcade
- » An Amusement arcade if located in an enclosed shopping mall²
- » A recreation centre as described in section 3.3.2.5

OTHER USES

- » A neighbourhood shopping centre
- » A day nursery or day care centre
- » A use permitted in all zones in accordance with section 2.1.1
- » A use, building or structure accessory to a permitted use

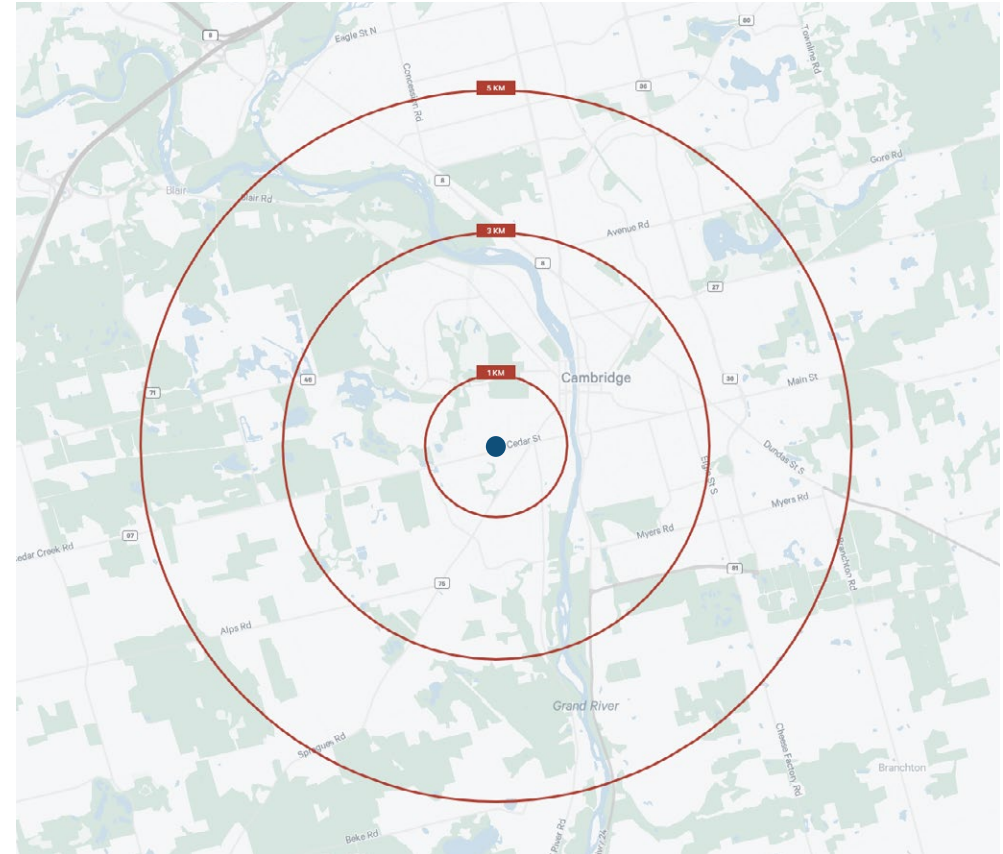
¹In which not more than 300m² of gross leasable commercial floor area is provided

²Which is not closer than 500m to a public or separate elementary or secondary school

CLICK TO VIEW
CITY OF CAMBRIDGE
ZONING-BY-LAW

*BUYERS/TENANTS ARE RESPONSIBLE FOR CONFIRMING ZONING AND PERMITTED USES.

Demographics



	TOTAL POPULATION 2025	POPULATION GROWTH 2025-2030	DAYTIME POPULATION 2025	HOUSEHOLD INCOME 2025
1 KM	10,994	11.7%	9,890	\$123,992
3 KM	47,201	11.0%	41,508	\$119,503
5 KM	94,153	13.1%	84,054	\$119,718

For more information, please contact :

Nicholas Regan*

Senior Sales Associate

416 801 1658

nicholas.regan@cbre.com

Adam Occhipinti*

Vice President

416 798 6265

adam.occhipinti@cbre.com

Matthew Pieszchala*

Vice President

905 234 0376

matthew.pieszchala@cbre.com

Karlyn Knafo*

Associate Vice President

905 234 0381

karlyn.knafo@cbre.com

CBRE Limited, Real Estate Brokerage | 5935 Airport Road, Suite 700, Mississauga, ON, L4V 1W5 | *Sales Representative

This disclaimer shall apply to CBRE Limited, Real Estate Brokerage, and to all other divisions of the Corporation ("CBRE"). The information set out herein, including, without limitation, any projections, images, opinions, assumptions and estimates obtained from third parties (the "Information") has not been verified by CBRE, and CBRE does not represent, warrant or guarantee the accuracy, correctness and completeness of the Information. CBRE does not accept or assume any responsibility or liability, direct or consequential, for the Information or the recipient's reliance upon the Information. The recipient of the Information should take such steps as the recipient may deem necessary to verify the Information prior to placing any reliance upon the Information. The Information may change and any property described in the Information may be withdrawn from the market at any time without notice or obligation to the recipient from CBRE. CBRE and the CBRE logo are the service marks of CBRE Limited and/or its affiliated or related companies in other countries. All other marks displayed on this document are the property of their respective owners. All Rights Reserved. Mapping Sources: Canadian Mapping Services canadamapping@cbre.com; DMTI Spatial, Environics Analytics, Microsoft Bing, Google Earth