

# RETAIL FOR LEASE

1620 KINGS HIGHWAY, BROOKLYN NY 11229



FOR MORE INFORMATION ON THIS PROPERTY PLEASE CALL OUR OFFICE: **718.517.8700**

# BUILDING DETAILS

## LOCATION INFO

Between East 16 St & E 17

## SIZE

1st Fl 1,125 SF  
2nd Fl 675 SF  
Total SQ FT 1,800 SF

Additional storage space in basement 685 SF

## ZONING

C4-4A

## BLOCK & LOT

06779-0031

## PRICE

\$ 10,000 NNN/ MO

## NEIGHBORHOOD

Homecrest

## BUILDING SIZE

15 ft x 75 ft

## STORIES

2

## TAXES

\$37,702

## COMMENTS

- Prime Kings Highway
- Retail location Between East 16th St & East 17th
- Brand HVAC System

## TRANSPORTATION

B7 B82 B82-SBS B Q

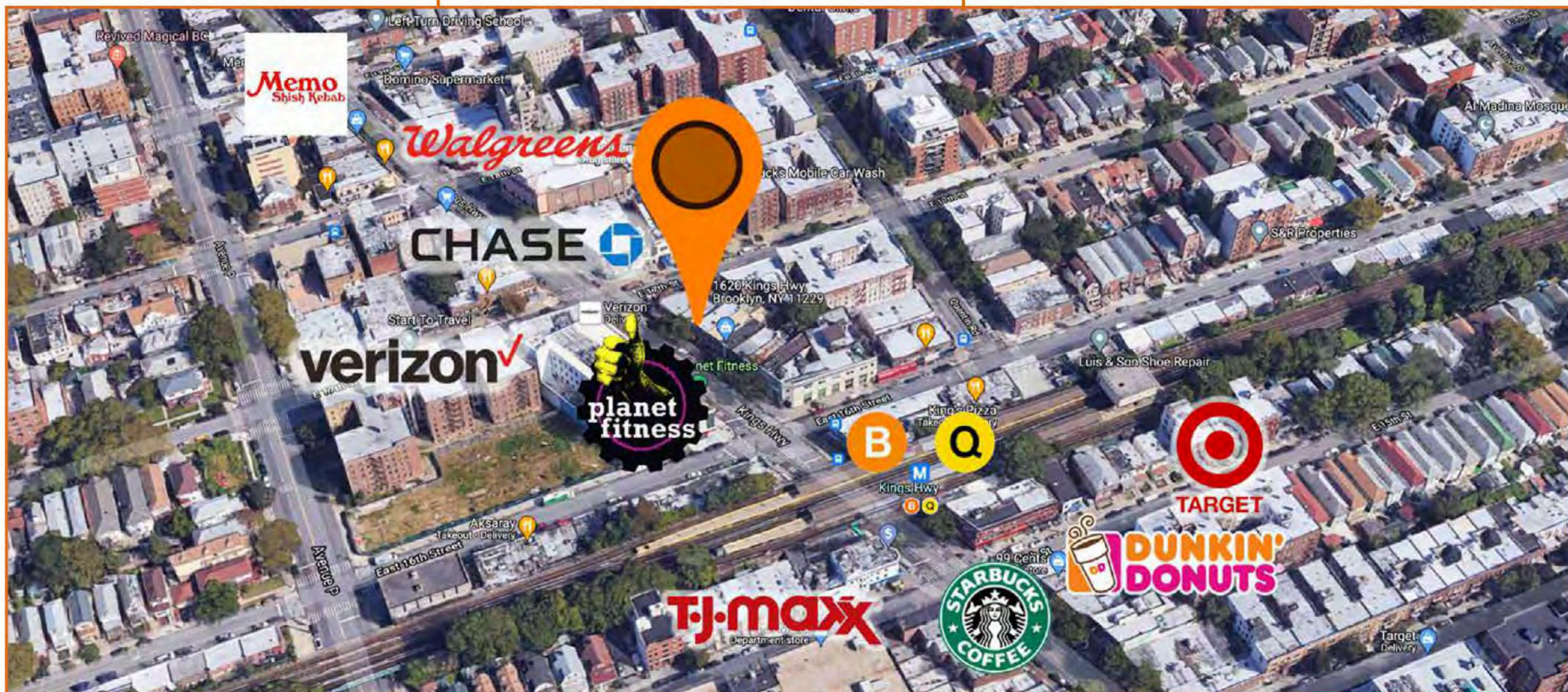
Walk Score  
93

Transit Score  
91

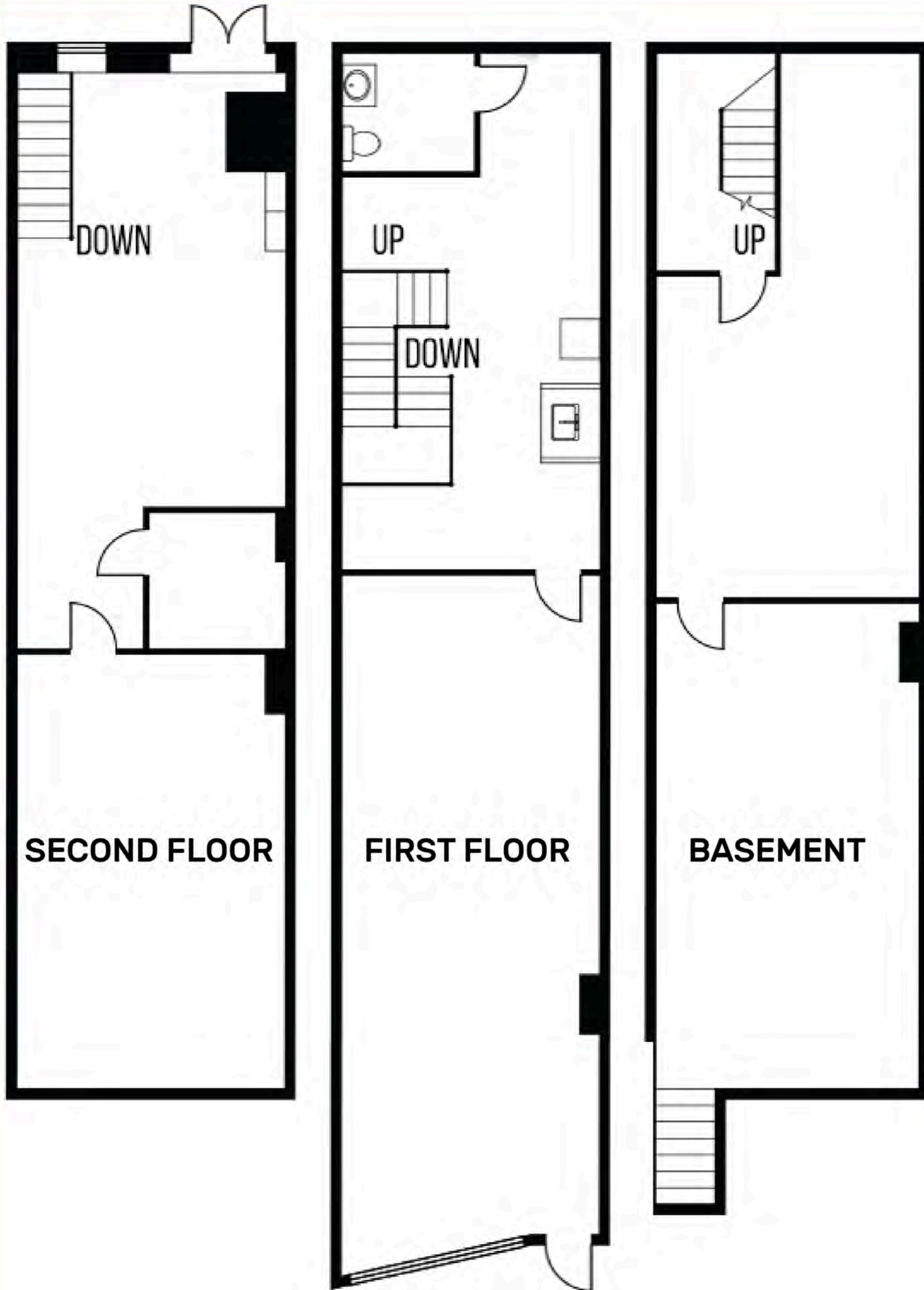
Bike Score  
59

## NEIGHBORING TENANTS

- Target
- Starbucks
- T.J.MAXX
- Planet Fitness
- CVS
- Citibank
- Verizon
- Chase Bank
- Stop & Shop
- Chipotle



# FLOOR PLAN



## FIRST FLOOR

1,125 SF

## SECOND FLOOR

675 SF

## BASEMENT

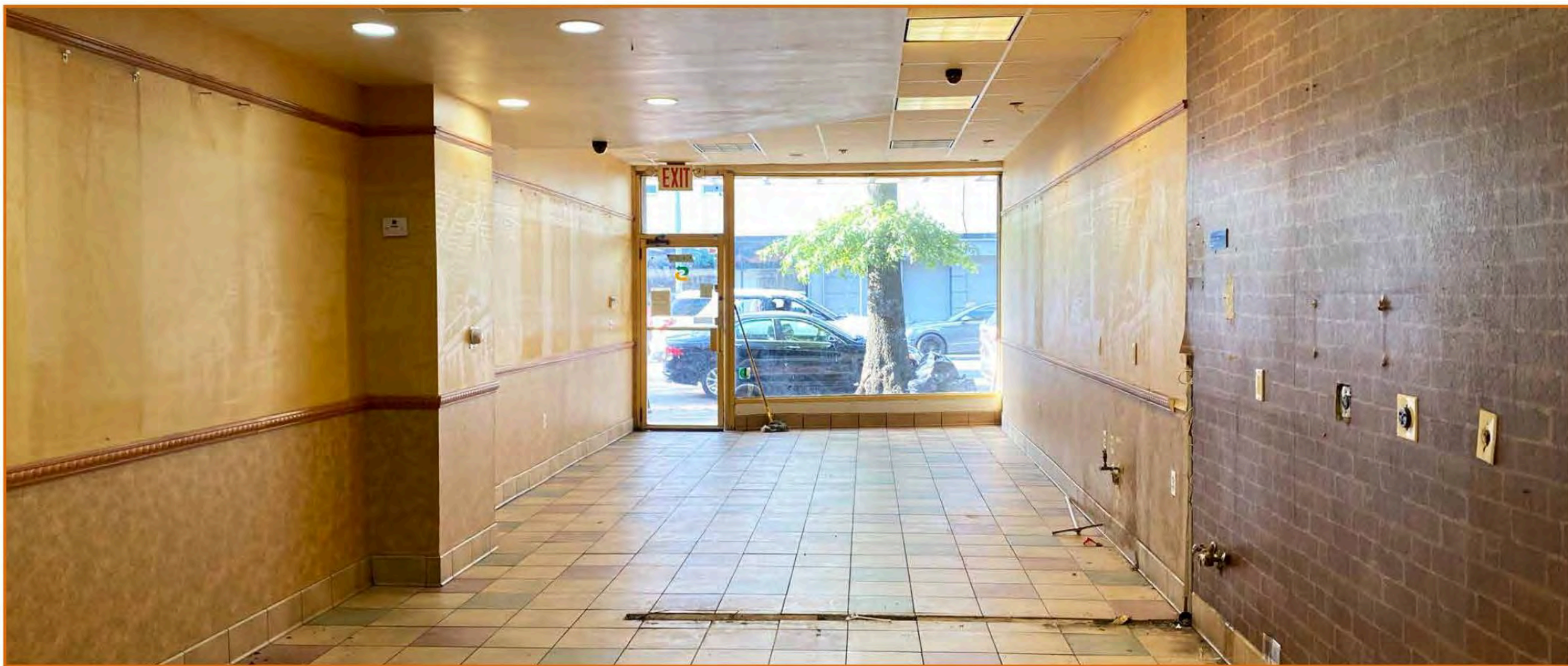
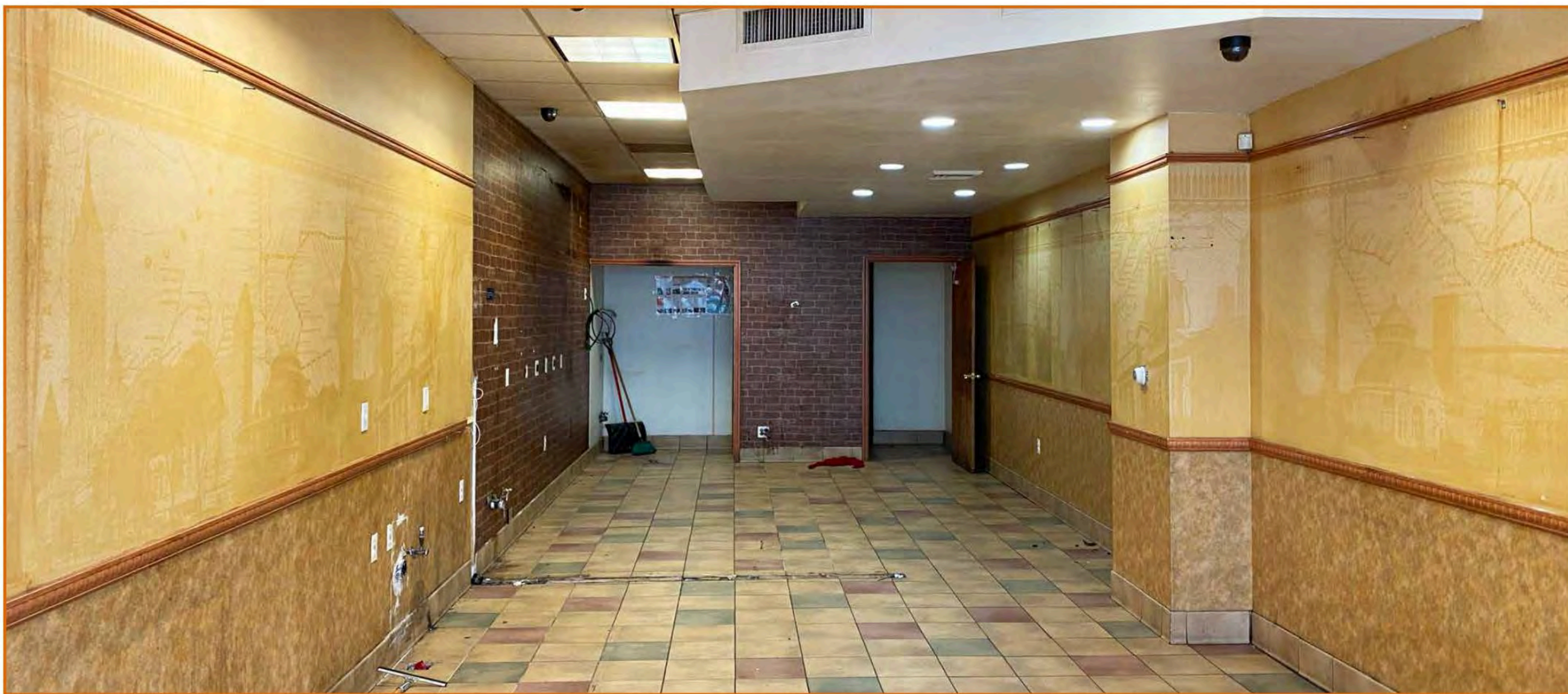
685 SF

**EAST 16TH STREET**

**KINGS HIGHWAY**

ALL DIMENSIONS ARE APPROXIMATE

# GROUND FLOOR



FOR MORE INFORMATION ON THIS PROPERTY PLEASE VISIT: [COMMERCIALACQ.COM](http://COMMERCIALACQ.COM)



# BASEMENT



FOR MORE INFORMATION ON THIS PROPERTY PLEASE VISIT: [COMMERCIALACQ.COM](https://COMMERCIALACQ.COM)



## **SECOND FLOOR**



**COMMERCIAL**  
ACQUISITIONS  
REALTY SERVICES



### **CONTACT EXCLUSIVE BROKER**

**ARSEN ATBASHYAN**

**CELL. 917.939.3760**

**Arsen@CommercialACQ.com**

**FOR MORE INFORMATION ON THIS PROPERTY PLEASE CALL OUR OFFICE: 718.517.8700**

**2500 CONEY ISLAND AVENUE, 2ND FLOOR, BROOKLYN, NY 11223 | 718.513.1889 | ARSEN@COMMERCIALACQ.COM | COMMERCIALACQ.COM**

Commercial Acquisitions Inc. has made every effort to obtain the information regarding these listings from sources deemed reliable. However, we cannot warrant the complete accuracy thereof subject to errors, omissions, change of price, rental or other conditions, prior sale, lease or financing, or withdrawal without notice. We recommend to the buyer that any information, which is of special interest, should be obtained through independent verification. ALL MEASUREMENTS MAY BE APPROXIMATE.