

# CONNECTED

ENTERPRISE POINT

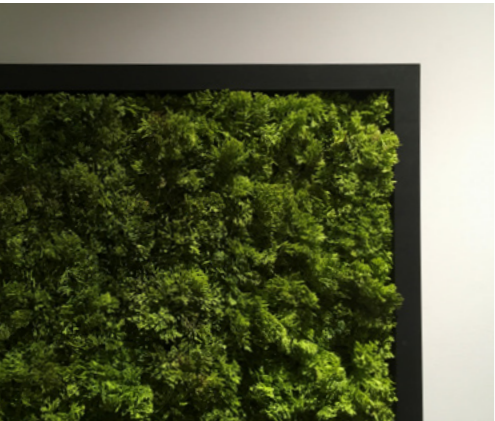
SHARSTON, SOUTH MANCHESTER M22 9AF



Perfectly placed for regional and global  
**CONNECTIVITY**



A contemporary welcome for all.



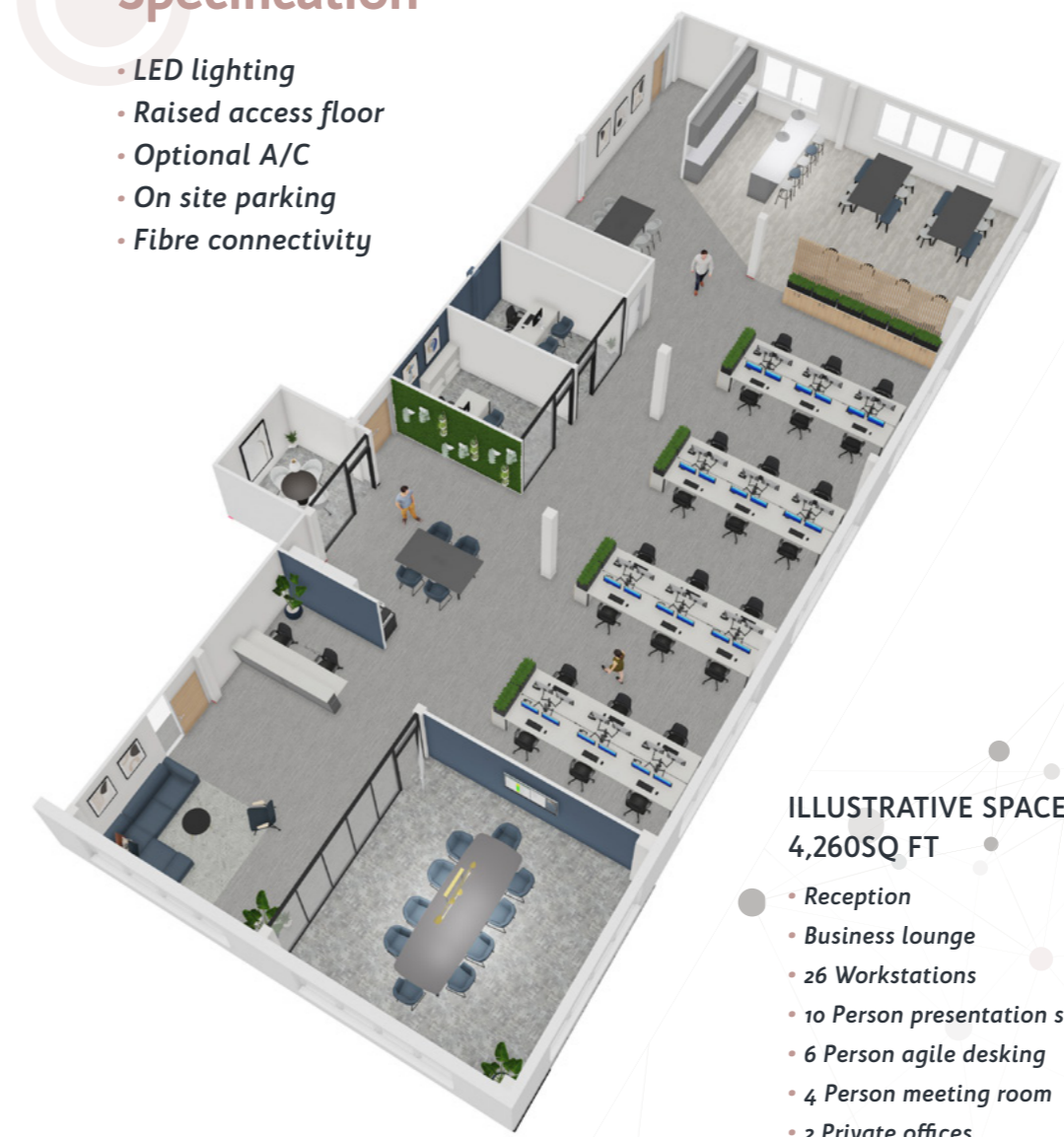


**Adaptable Ground and First Floor Workspace for Evolving Business Needs**

**1,720 - 14,625 sq ft**

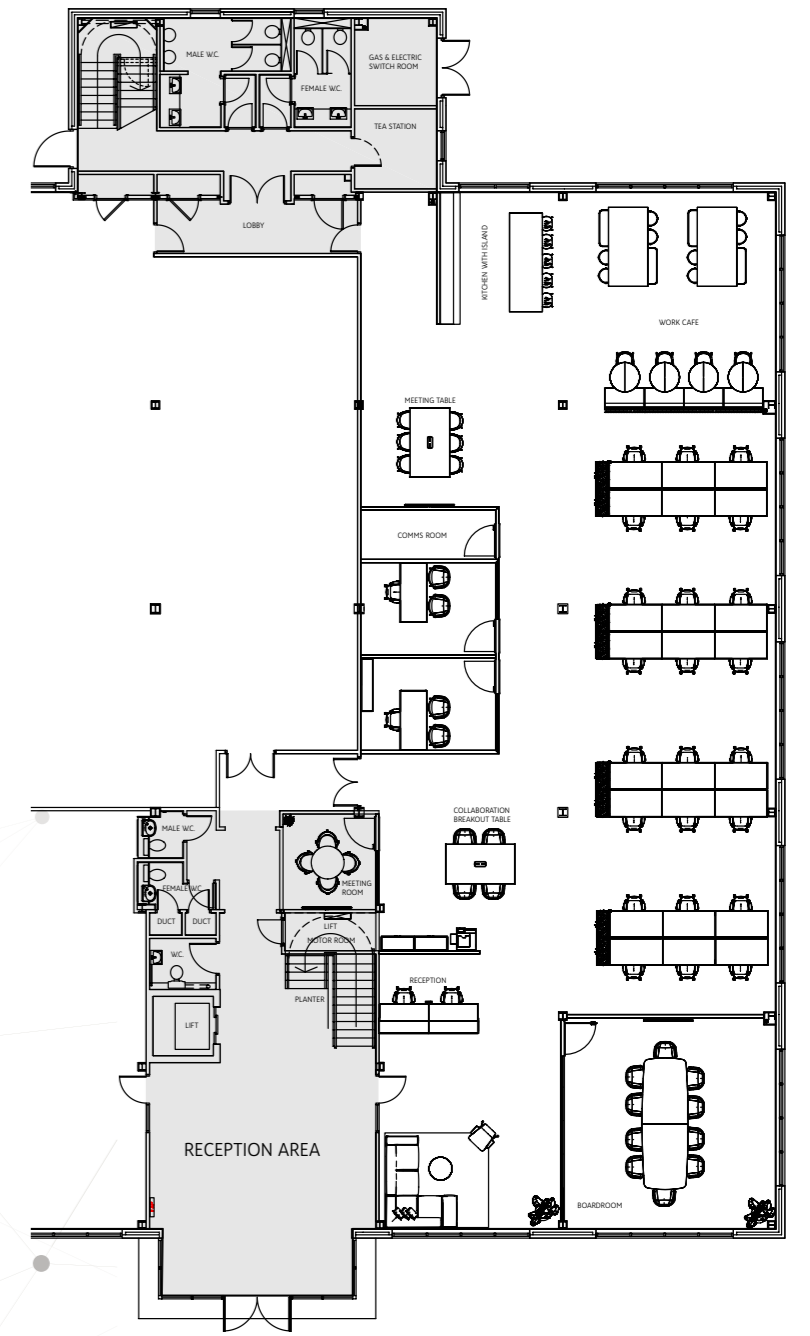
### Specification

- LED lighting
- Raised access floor
- Optional A/C
- On site parking
- Fibre connectivity



### ILLUSTRATIVE SPACE PLAN 4,260SQ FT

- Reception
- Business lounge
- 26 Workstations
- 10 Person presentation suite
- 6 Person agile desking
- 4 Person meeting room
- 2 Private offices
- Kitchen breakout/cafe
- Print hub
- Comms

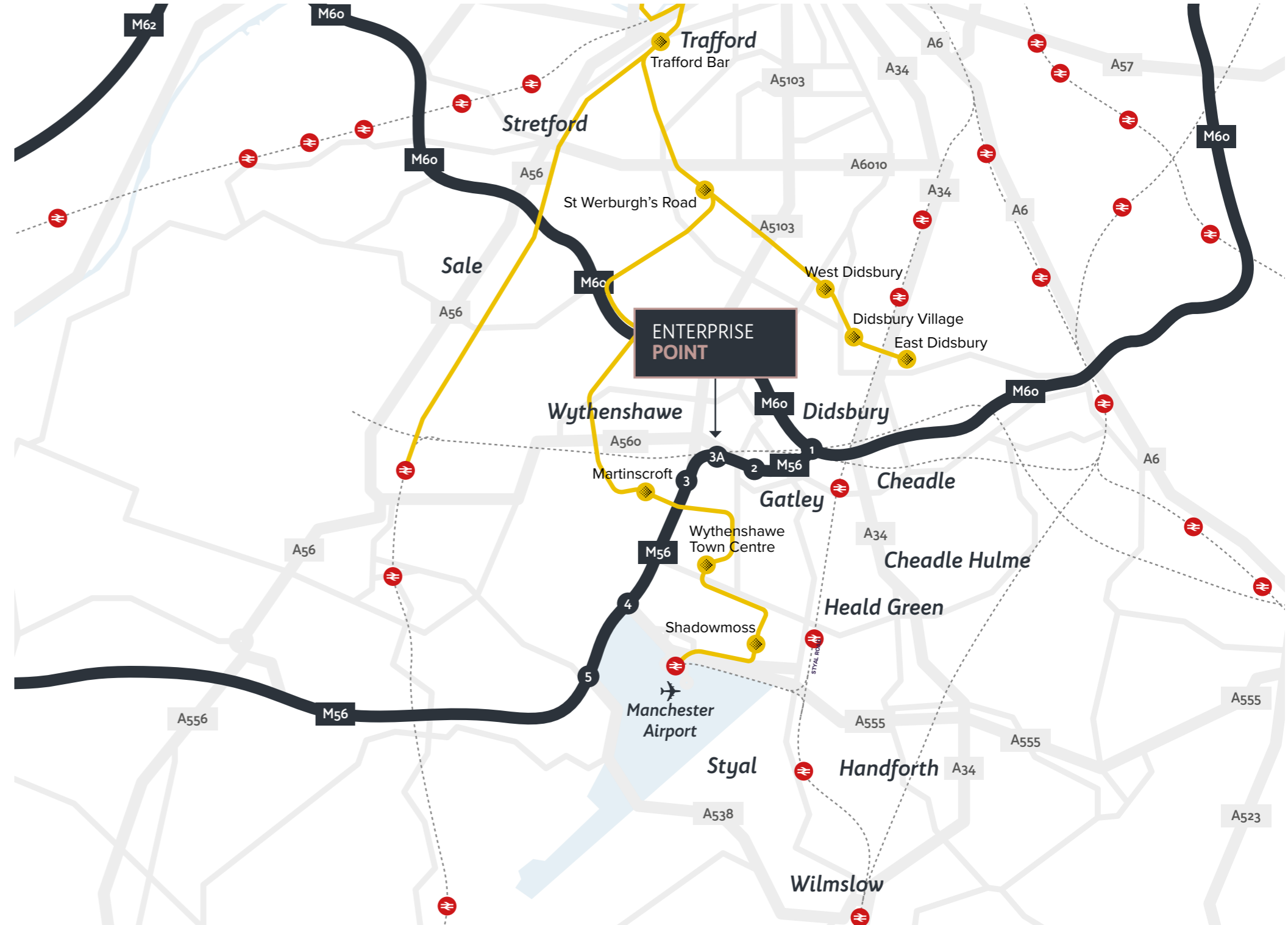




*Make a  
move  
and  
take a  
closer  
look.*

**JUNCTIONS  
2 & 3 M56**





*provide excellent connectivity  
to the regional and national  
motorway network.*




## AMENITY

Enterprise Point is within easy reach of excellent staff facilities being approximately 1 mile from Gatley, Northenden and Baguley.

### LOCAL AMENITIES

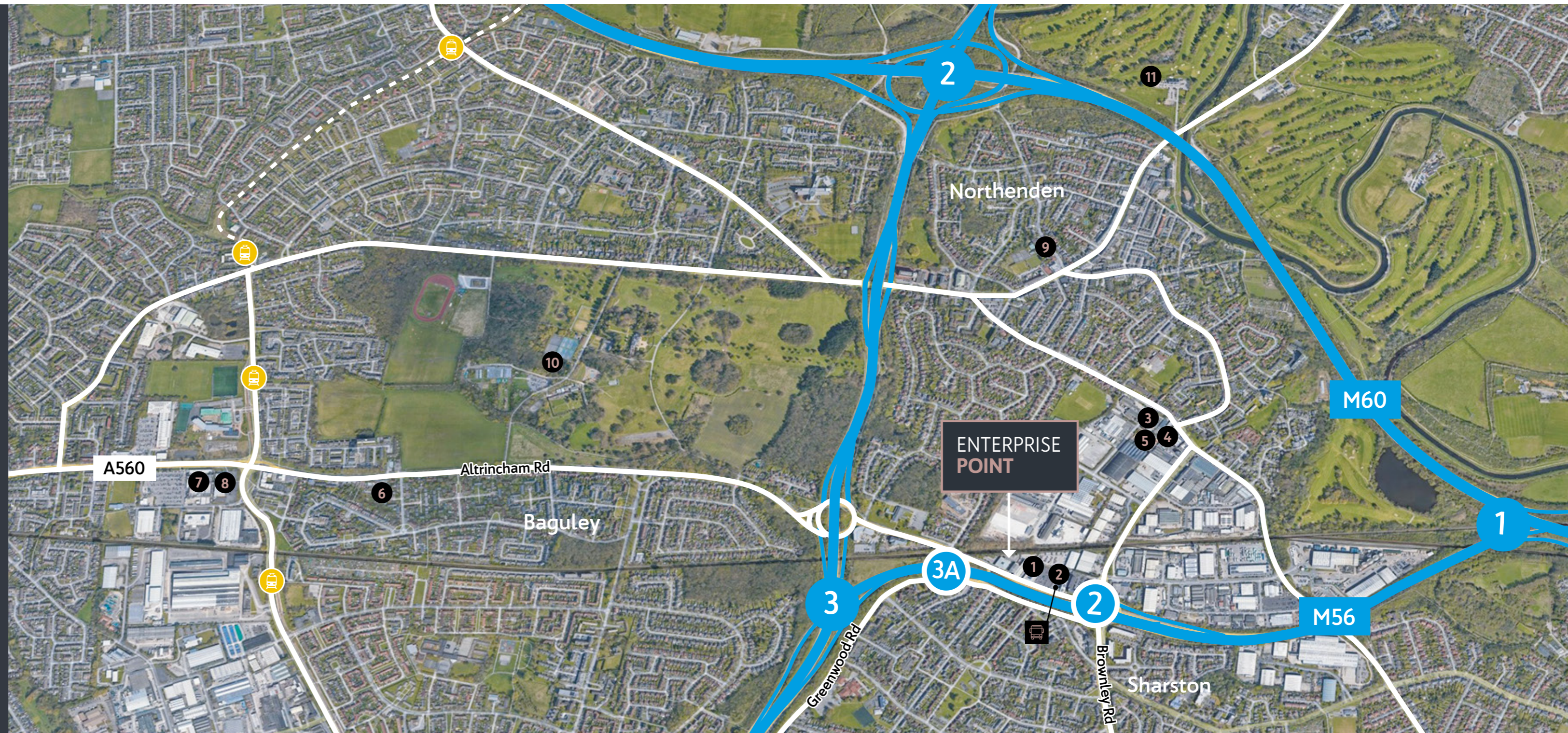
- |                |  |                               |   |
|----------------|--|-------------------------------|---|
| 1. ALDI        |  1 min  | 9. NORTHENDEN BRITANNIA HOTEL |  4 min |
| 2. POST OFFICE |  1 min  | FARMERS ARMS                  |   |
| 3. SUBWAY      |  1 min  | FIREAWAY PIZZA                |   |
| 4. SPAR        |  1 min  | NORTHENDEN UNTAPPED           |   |
| 5. GREGGS      |  1 min  | LOUNGE ABOUT                  |   |
| 6. MCDONALDS   |  3 min  | CO-OP                         |   |
| 7. TESCO       |  5 min  | CROWN INN                     |   |
| 8. LIDL        |  5 min | COSTA                         |   |
|                |  | SUBWAY                        |   |
|                |  | 10. WYTHENSHAW PARK           |  5 min |
|                |  | 11. NORTHENDEN GOLF CLUB      |  7 min |



 2 min

### LOCAL BUS SERVICES

There is a bus stop within 2 minutes walk providing local bus services via the X5 route (Stockport - Sharston - Sale Moor - Sale)



# ENTERPRISE POINT

SHARSTON, SOUTH MANCHESTER M22 9AF

For more information or to arrange a viewing



**01625 588200**  
[www.orbit-developments.co.uk](http://www.orbit-developments.co.uk)

**Richard Wharton**  
[Richard.Wharton@eu.jll.com](mailto:Richard.Wharton@eu.jll.com)



**James Dickinson**  
[james@canningoneill.com](mailto:james@canningoneill.com)



Misrepresentation Act 1967. Unfair Contract Terms Act 1977. The Property Misdescriptions Act 1991. These particulars are issued without any responsibility on the part of the agent and are not to be construed as containing any representation or fact upon which any person is entitled to rely. Neither the agent nor any person in their employ has any authority to make or give any representation or warranty whatsoever in relation to the property. December 2022. RB&Co. 0161 281 0088. [www.richardbarber.co.uk](http://www.richardbarber.co.uk)