

The Langham Estate



PLUG 'N'
PLAY

Great Titchfield House,
14-18 Great Titchfield
Street

Fitzrovia, London W1



FOURTH FLOOR
1,992 SQ FT | 185.06 SQ M
FULLY FITTED, SELF-CONTAINED
OFFICE SUITE TO LET



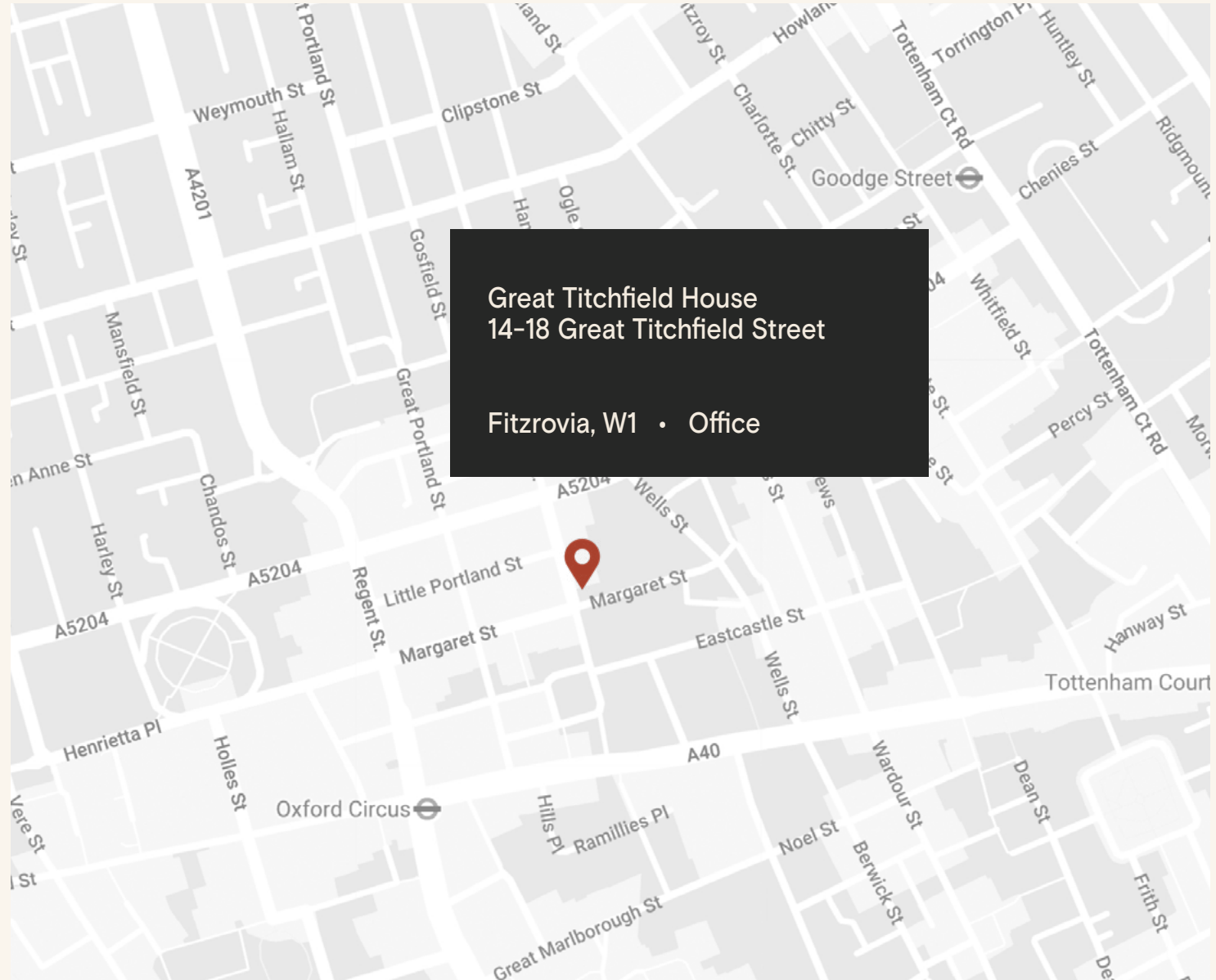
The Location

Great Titchfield House is located on the east side of Great Titchfield Street, between Margaret Street and Mortimer Street, in the heart of vibrant Fitzrovia.

The property is moments away from the international retail thoroughfare of Oxford Street & Regent Street and a short walk away from Regent's Park. The area has excellent transport links including 8 underground tube lines spread across 8 stations, as well as the Elizabeth Line.

Connectivity

Oxford Circus	5 min walk
Goodge Street	9 min walk
Tottenham Court Road	10 min walk
Bond Street	11 min walk
Great Portland Street	11 min walk
Regent's Park	15 min walk
Warren Street	17 min walk
Euston Square	18 min walk



Great Titchfield House | Fourth Floor

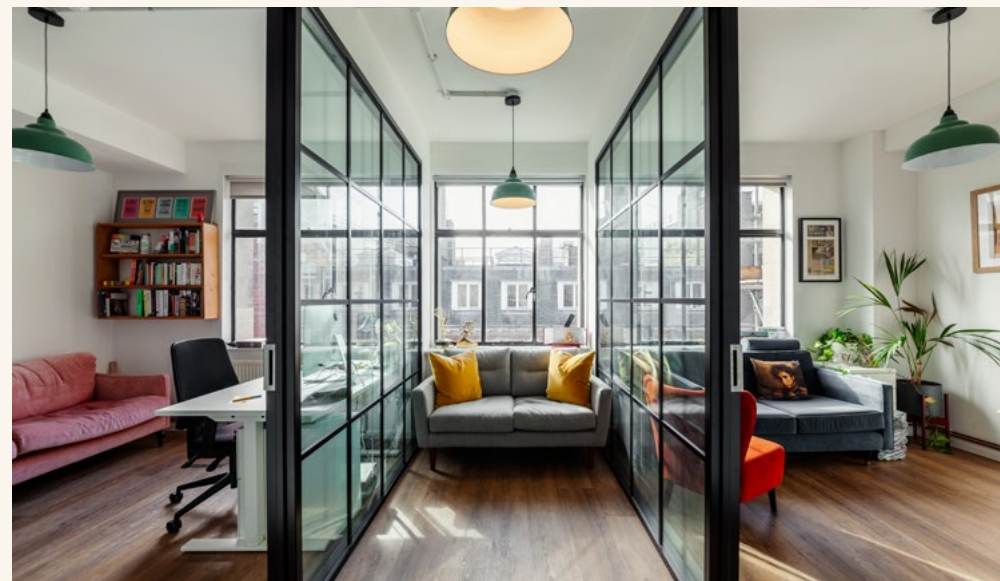


1,992 sq ft
plug and play
office space at the
very centre of Fitzrovia.











Features

- Open Plan
- Furnished
- Four Meeting Rooms
- Lounge Area
- Good Natural Light
- Own Kitchenette
- 24 Hour Access
- Central Heating
- Wood Flooring
- Good Ceiling Height
- Feature Lighting

Details

Floor Area

1,992 SQ FT / 185.06 SQ M

Rent

On application

Lease Terms

A new Full Repairing & Insuring Lease is available for a term by arrangement, outside the Landlord & Tenant Act 1954.

Possession

Immediate upon completion of legal formalities

Legal Costs

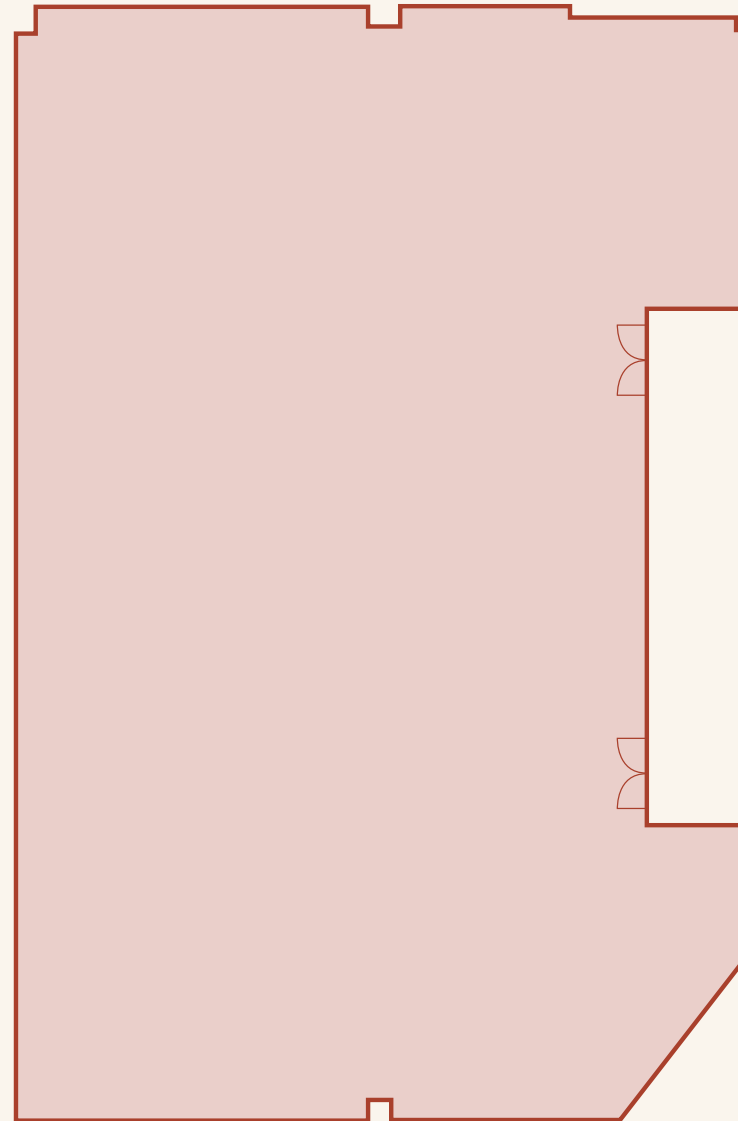
Each party to be responsible for their own legal costs

Furniture

Unit to be delivered furnished

V.A.T.

Pricing exclusive of V.A.T.





Sustainability



We aim to reach NET ZERO emissions by 2040 from our operations



100% Landlord Renewable Electricity



Zero waste to landfill in the building



Waste management initiative



We are Signatories of WCC Sustainable City Charter



Current EPC Rating (awaiting new assessment)

FQ



Discover Fitzrovia Quarter



FITZROVIA QUARTER



Explore our neighbourhood

The Langham Estate

langhamestate.com

For further information call

020 7580 5656



Malcolm Cohen

malcolm.cohen@langhamestate.com

020 7907 4983

07526 189 462

Daniel Yershon

daniel.yershon@langhamestate.com

020 7907 4986

07731 985 129

William Spencer

william.spencer@langhamestate.com

020 7907 4960

07707 875 082

Any property is offered subject to contract, availability, and confirmation of details. These particulars do not form part of any contract and, whilst believed to be correct, parties are recommended to satisfy themselves as to the accuracy. The Lessors or Langham Estate Management Limited, or any person in their employment, cannot make or give any representation or warranty whatsoever in relation to this property. Unless otherwise stated, all prices and rentals quoted are exclusive of any Value Added Tax to which they may be subject. Floorplans are for illustrative purposes only and may not accurately reflect the property's current internal layout.