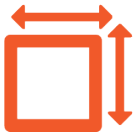


FOR LEASE

LOWE'S PLAZA | 3160 W RIDGE RD, ROCHESTER, NY 14626



MULTIPLE SPACES
AVAILABLE



30,502
VEHICLES PER DAY



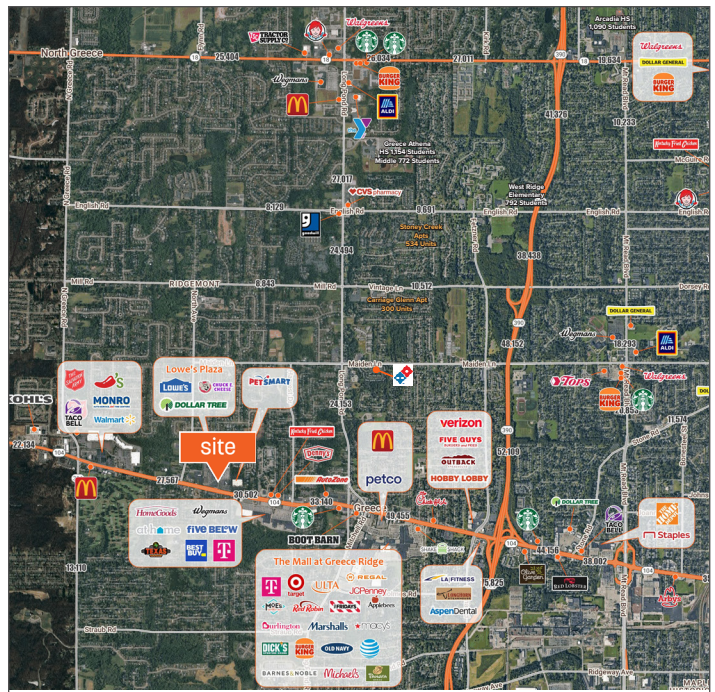
Upon Request

OFFERING SUMMARY

Property Type	Retail/Salon
Space Available	Pad Site 8,000+SF 50,000+SF
Lease Type	NNN/Ground
Traffic Counts	W Ridge Rd: 30,502 / vpd
Parking	1,200+ Spaces
Lease Price	UPON REQUEST

PROPERTY HIGHLIGHTS

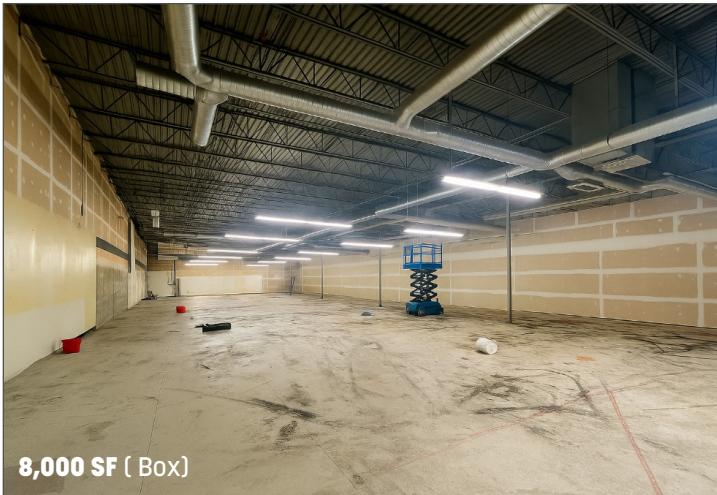
- Pad site, 8,000 SF raw box & 50,000 SF - Value City Furniture
- In close proximity to The Mall at Greece Ridge, Wegmans, Unity Hospital, Ridgemont Plaza, multiple dining and retail establishments & I-390
- Anchor Tenants include: Lowe's Home Improvement, Ollie's, Chuck E. Cheese, Dollar Tree, and Texas BBQ Joint
- Signage opportunities, including a pylon sign at a signalized intersection



DEMOGRAPHICS	1 Mile	3 Miles	5 Miles
Population	8,459	55,644	157,731
Median HH Income	\$76,972	\$78,233	\$70,120
Households	3,826	24,699	68,470
Employees	2,972	17,191	55,2

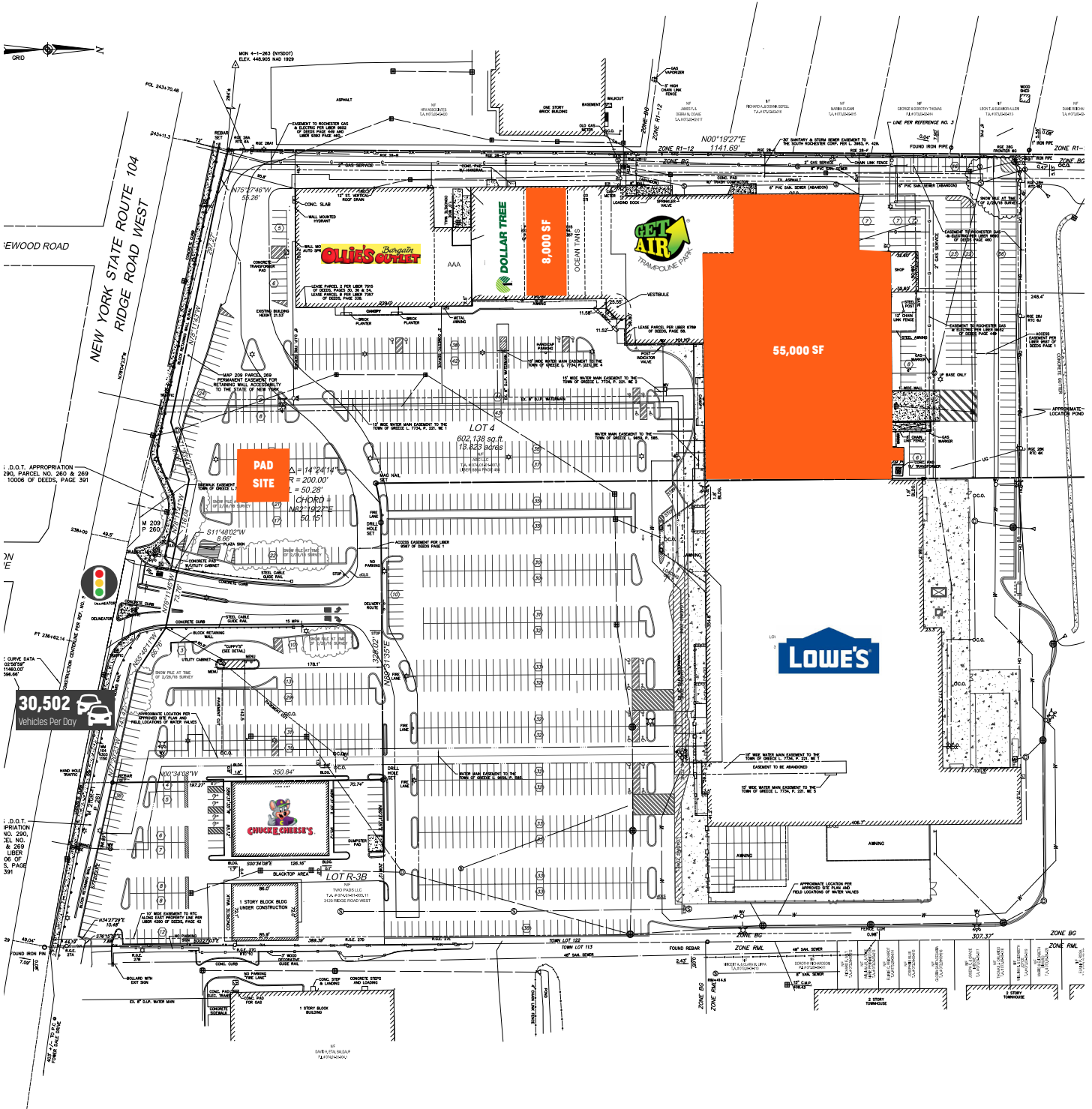
FOR LEASE

LOWE'S PLAZA | 3160 W RIDGE RD, ROCHESTER, NY 14626



FOR LEASE

LOWE'S PLAZA | 3160 W RIDGE RD, ROCHESTER, NY 14626



SYMBOL LEGEND

REFERENCES

REFERENCES

Jacob Rivera, Partner
Licensed Associate Real Estate Broker
M: 310.650.4322 O: 585.454.4500 x 118
jrivera@caliberbrokerage.com

Caliber Commercial Brokerage LLC
394 E Henrietta Rd | Rochester, NY 14620
caliberbrokerage.com
585.454.4500