



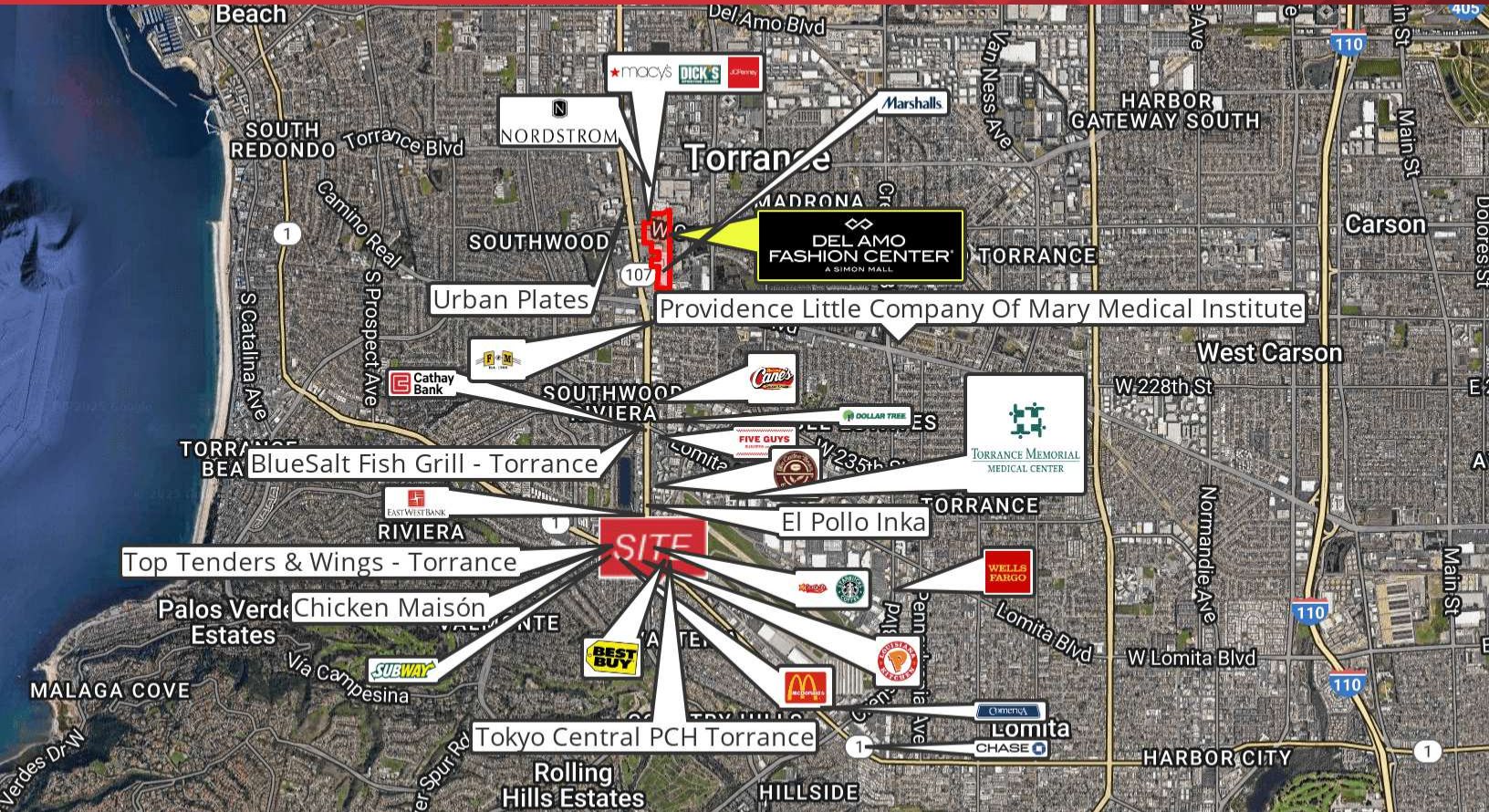
FOR LEASE



RETAIL PAD



6,614 SF



## 24030 Hawthorne Boulevard

Torrance, California 90505

### Property Highlights

- Best Buy and newly opened Tokyo Central anchored center with strong co-tenancy of Starbucks, Panda Express and AT&T
- At the busy intersection of Pacific Coast Highway and Hawthorne Blvd (85K VPD) near Palos Verdes and the Beach Cities
- Strong density of residential and daytime worker population
- Numerous new multi-family developments in the vicinity providing hundreds of new units
- Former bank with drive-thru lane (no window), offices, small kitchen, monument sign and ample parking

### OFFERING SUMMARY

Lease Rate:	Negotiable (NNN)
Available SF:	6,614 SF
Building Size:	6,614 SF

### DEMOGRAPHICS

	1 MILE	2 MILES	3 MILES
Total Households	6,877	30,072	70,452
Total Population	17,632	76,429	178,384
Average HH Income	\$148,492	\$163,796	\$157,126

**Sheri Messerlian**

Executive Vice President | 310.436.1762  
smesserlian@naicapital.com | CalDRE #00450571

**Ilmar Kalviste**

Vice President | 310.878.6923  
ikalviste@naicapital.com | CalDRE #01331187





FOR LEASE



RETAIL PAD



6,614 SF



**Sheri Messerlian**  
Executive Vice President | 310.436.1762  
smesserlian@naicapital.com | CalDRE #00450571

**Ilmar Kalviste**  
Vice President | 310.878.6923  
ikalviste@naicapital.com | CalDRE #01331187



www.naicapital.com

NO WARRANTY, EXPRESS OR IMPLIED, IS MADE AS TO THE ACCURACY OF THE INFORMATION CONTAINED HEREIN. THIS INFORMATION IS SUBMITTED SUBJECT TO ERRORS, OMISSIONS, CHANGE OF PRICE, RENTAL OR OTHER CONDITIONS, WITHDRAWAL WITHOUT NOTICE, AND IS SUBJECT TO ANY SPECIAL LISTING CONDITIONS IMPOSED BY OUR PRINCIPALS, COOPERATING BROKERS, BUYERS, TENANTS AND OTHER PARTIES WHO RECEIVE THIS DOCUMENT SHOULD NOT RELY ON IT, BUT SHOULD USE IT AS A STARTING POINT OF ANALYSIS, AND SHOULD INDEPENDENTLY CONFIRM THE ACCURACY OF THE INFORMATION CONTAINED HEREIN THROUGH A DUE DILIGENCE REVIEW OF THE BOOKS, RECORDS, FILES AND DOCUMENTS THAT CONSTITUTE RELIABLE SOURCES OF THE INFORMATION DESCRIBED HEREIN. LOGOS ARE FOR IDENTIFICATION PURPOSES ONLY AND MAY BE TRADEMARKS OF THEIR RESPECTIVE COMPANIES. NAI CAPITAL COMMERCIAL, INC. CAL DRE LIC. #02130474



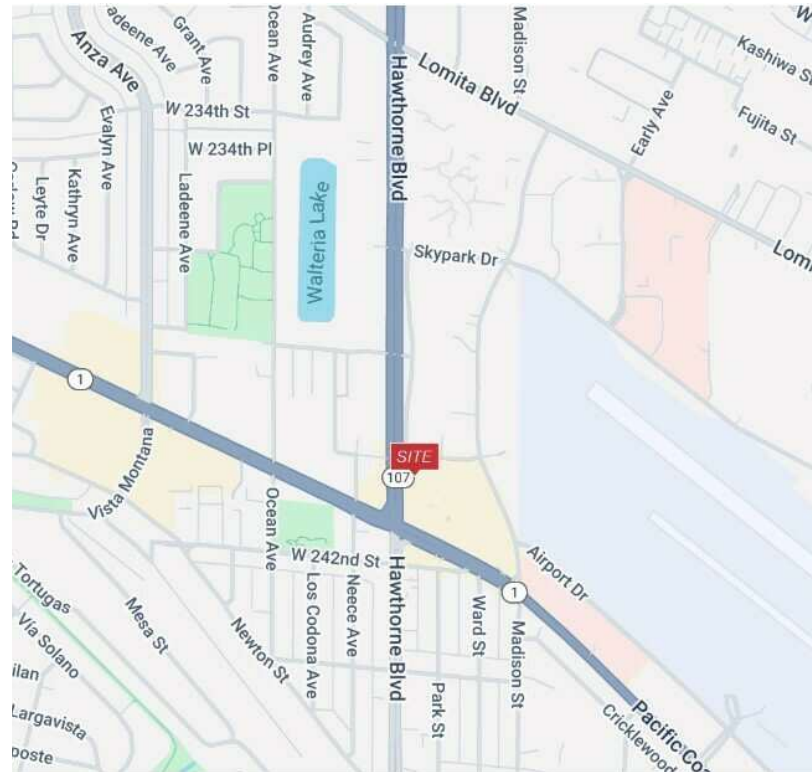
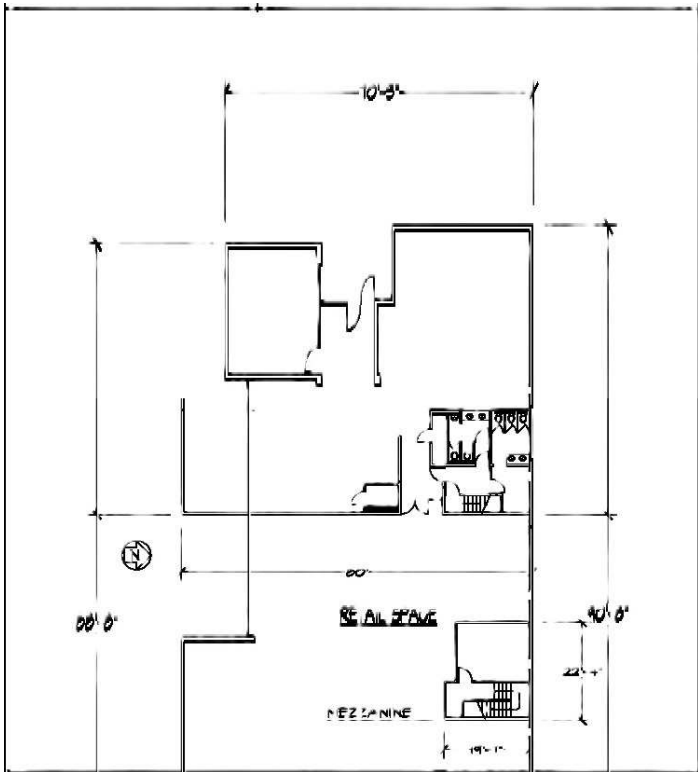
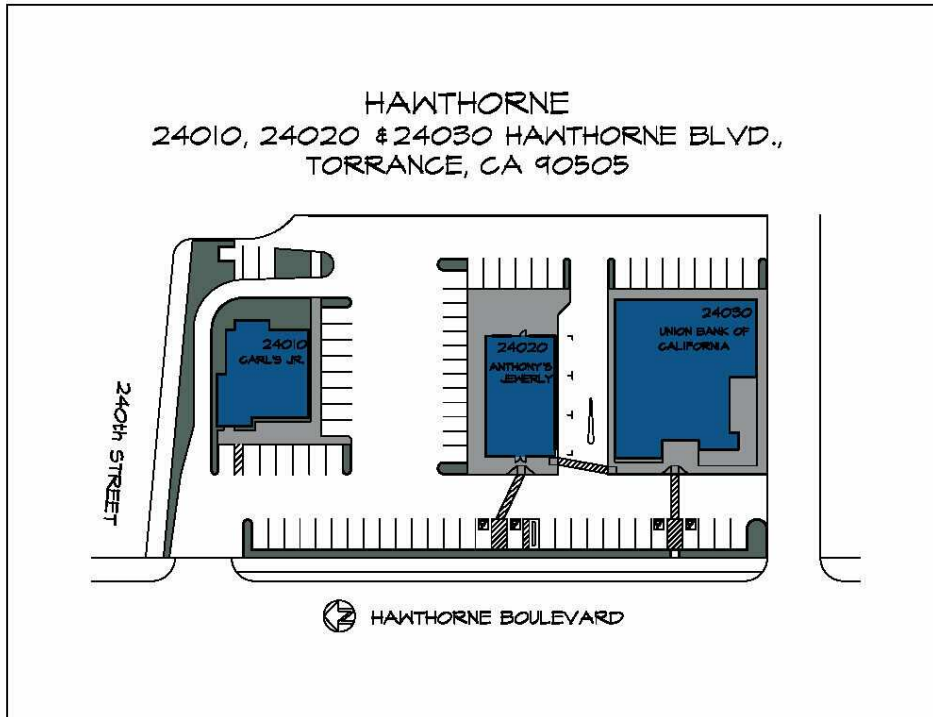
FOR LEASE



RETAIL PAD



6,614 SF



**Sheri Messerlian**

Executive Vice President | 310.436.1762  
smesserlian@naicapital.com | CalDRE #00450571

**Ilmar Kalviste**

Vice President | 310.878.6923  
ikalviste@naicapital.com | CalDRE #01331187

