

silicon valley center

2590 N. First Street | Second Floor

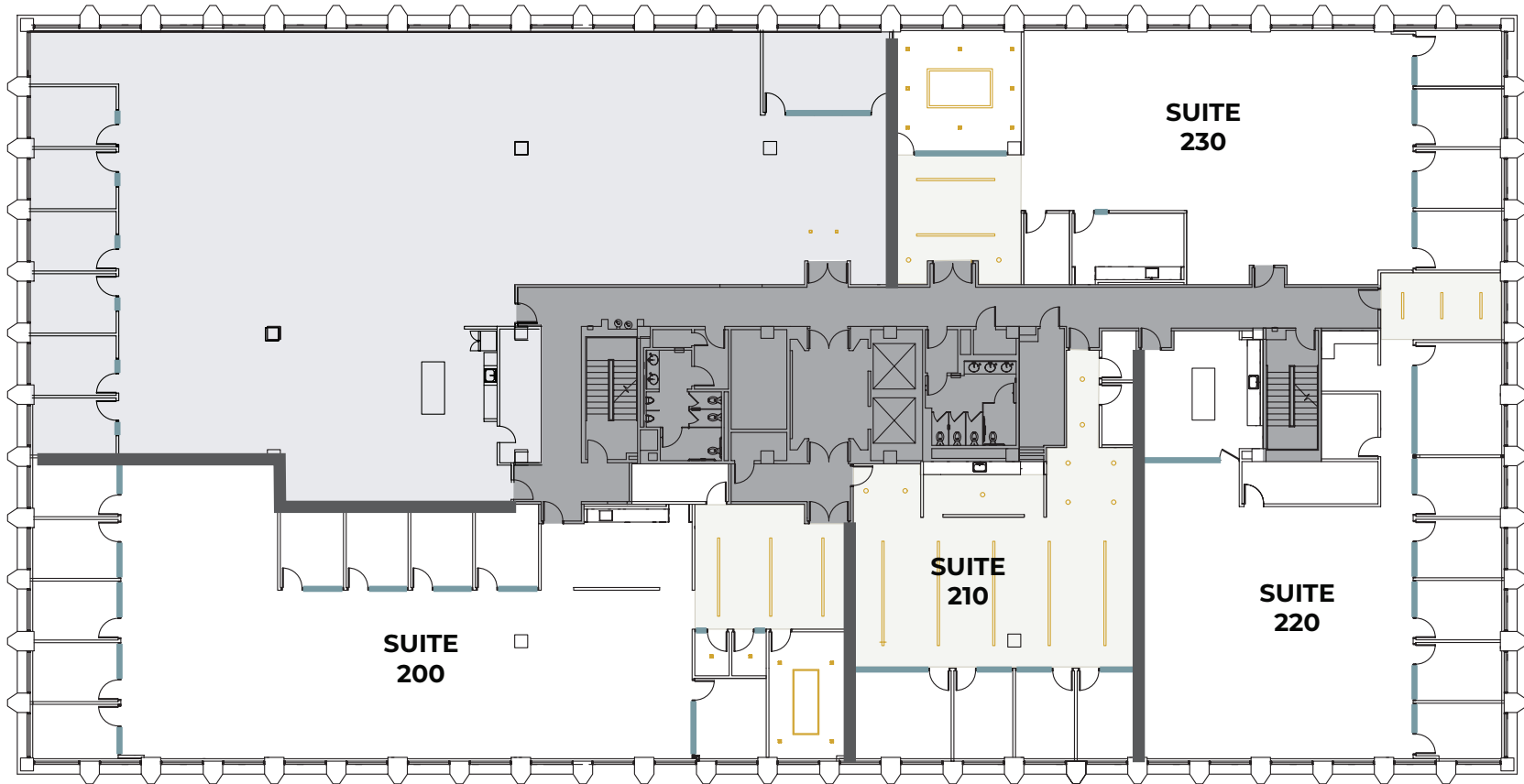
Flex+[®]
BY IRVINE COMPANY



artist rendering

2590 N. First Street

floor 2



— GLASS  LIGHTS  OPEN CEILING

- 4 new, premium move-in ready suites range from 2.6K - 6.6K SF (Available Summer 2026)
- High-end suite designs feature a variety of modern lighting, premium break areas and exposed ceiling
- Convenient access to outdoor workspaces, Kinetic Fitness, casual dining options, The Lounge and Venue Meetings & Events



2590 N. First Street

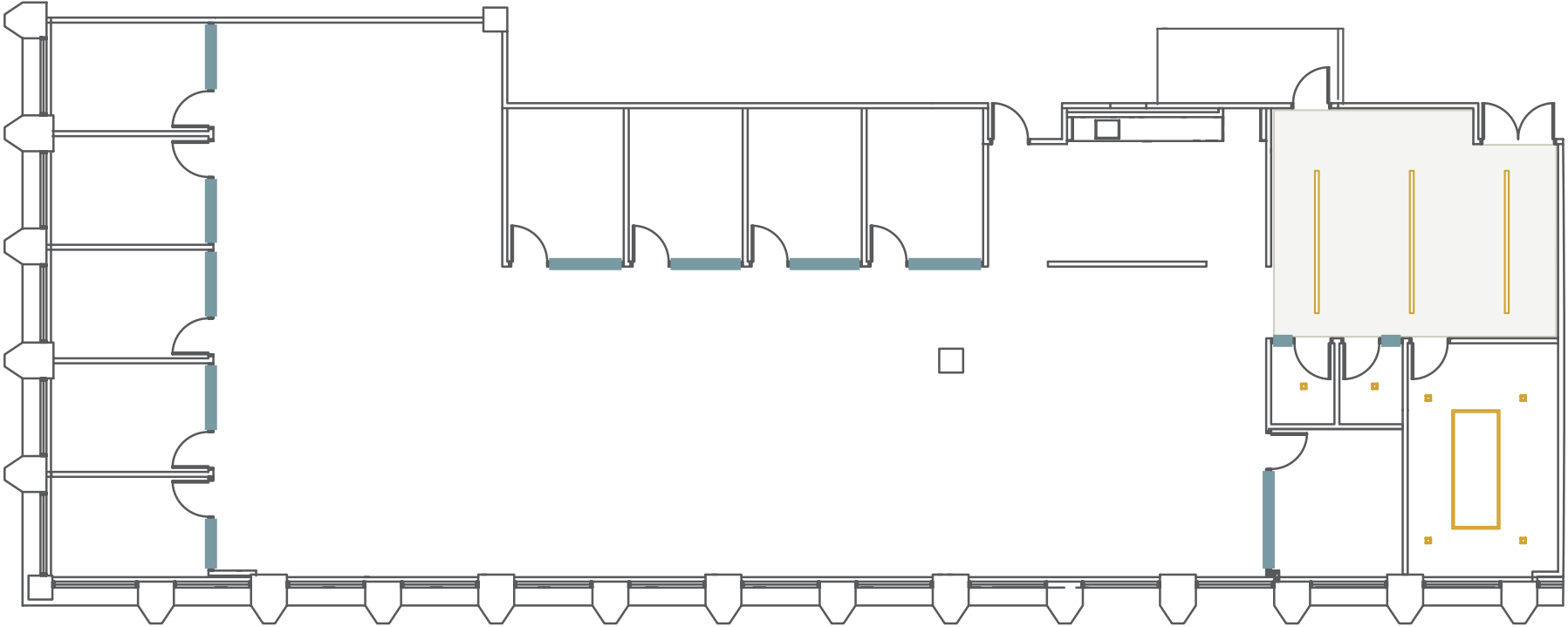
suite 200

total size
±6,613 sqft

team size
±29

private offices
9

meeting rooms
3



GLASS LIGHTS OPEN CEILING



2590 N. First Street
suite 200



artist rendering

glass partitions + open ceiling + wood laminate flooring



2590 N. First Street

suite 200



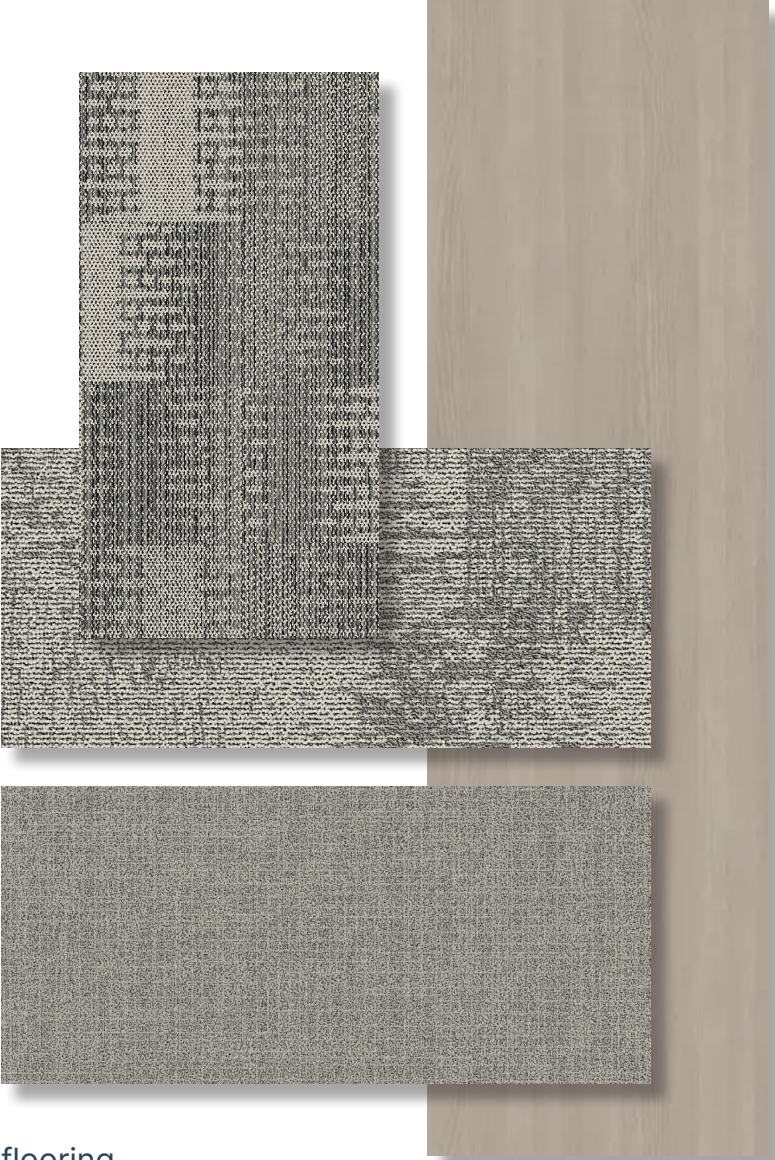
artist rendering

built-in appliances + matte black hardware + modern backsplash + stone counterstop + wood laminate flooring



2590 N. First Street

suite 200



flooring



paint scheme



breakroom

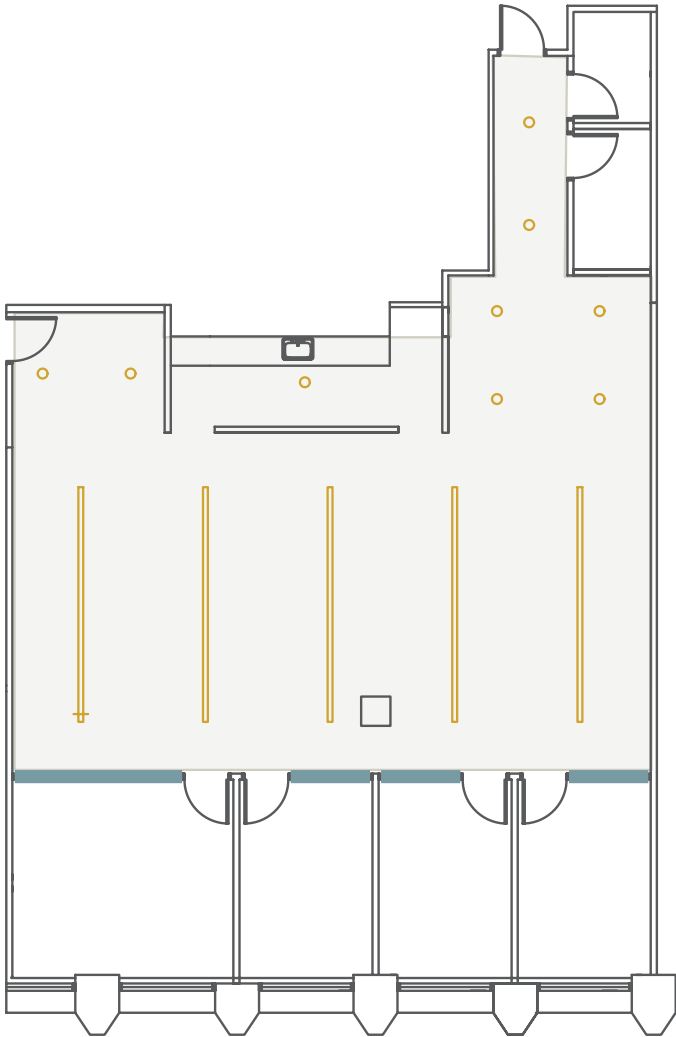


2590 N. First Street

suite 210

total size
±2,675 sqft

| team size | private offices | meeting room |
|-----------|-----------------|--------------|
| 12 | 3 | 1 |



GLASS LIGHTS OPEN CEILING



2590 N. First Street

suite 210



artist rendering

glass partitions + open ceiling



2590 N. First Street

suite 210



artist rendering

built-in appliances + modern backsplash + silver hardware + stone countertop + wood laminate flooring



2590 N. First Street

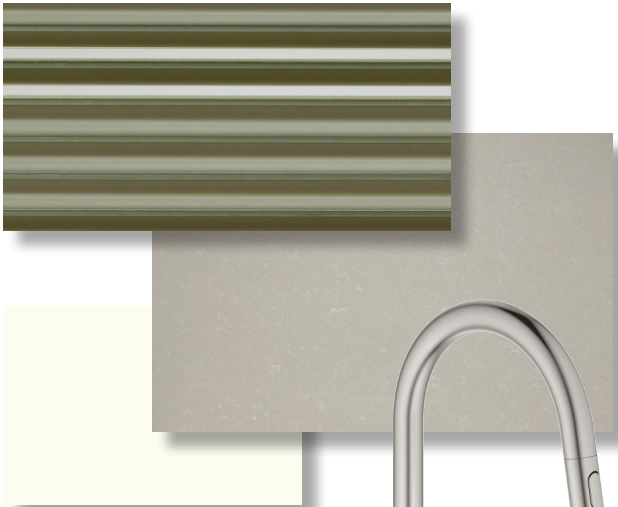
suite 210



flooring



paint scheme



breakroom



2590 N. First Street

suite 220

total
size

±4,577 sqft

team
size

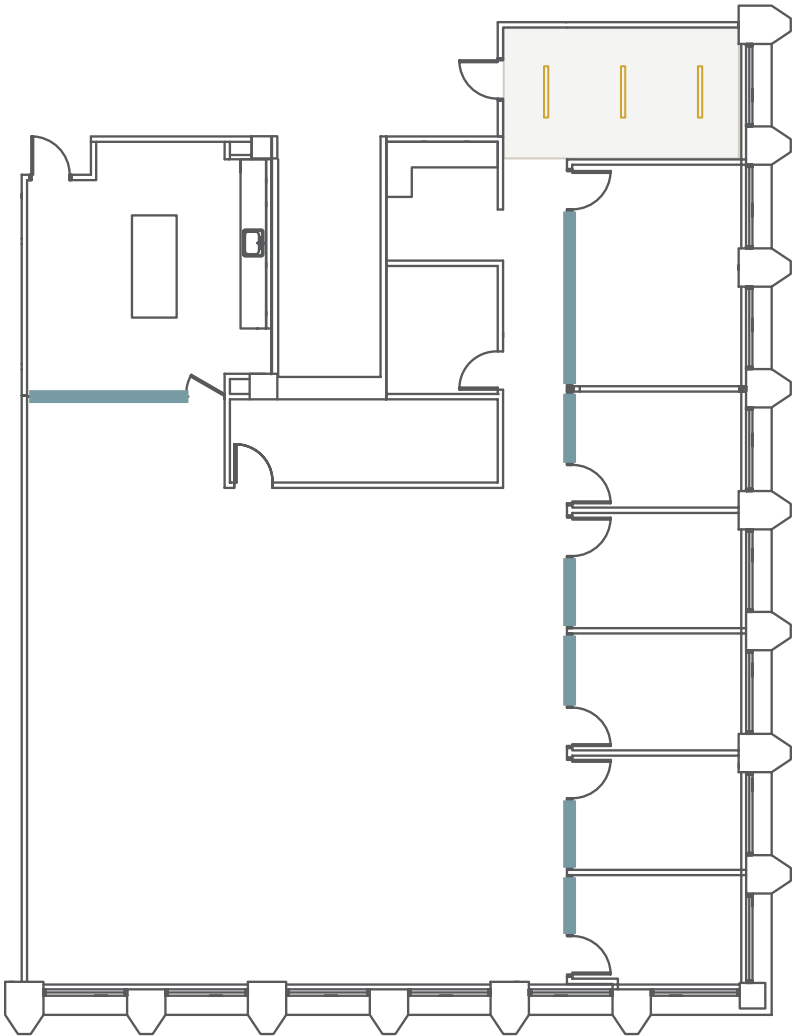
20

private
offices

5

meeting
room

1



— GLASS  LIGHTS  OPEN CEILING



2590 N. First Street

suite 220



artist rendering

glass partitions



2590 N. First Street

suite 220



artist rendering

glass partitions + wood laminate flooring



2590 N. First Street

suite 220



artist rendering

built-in appliances + glass partitions + modern backsplash + polished concrete + stone countertop

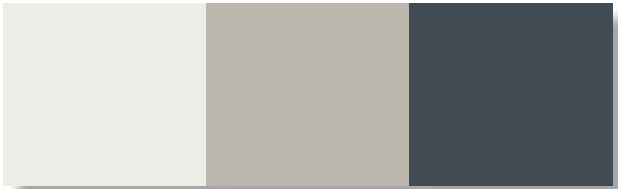


2590 N. First Street

suite 220



flooring



paint scheme



breakroom

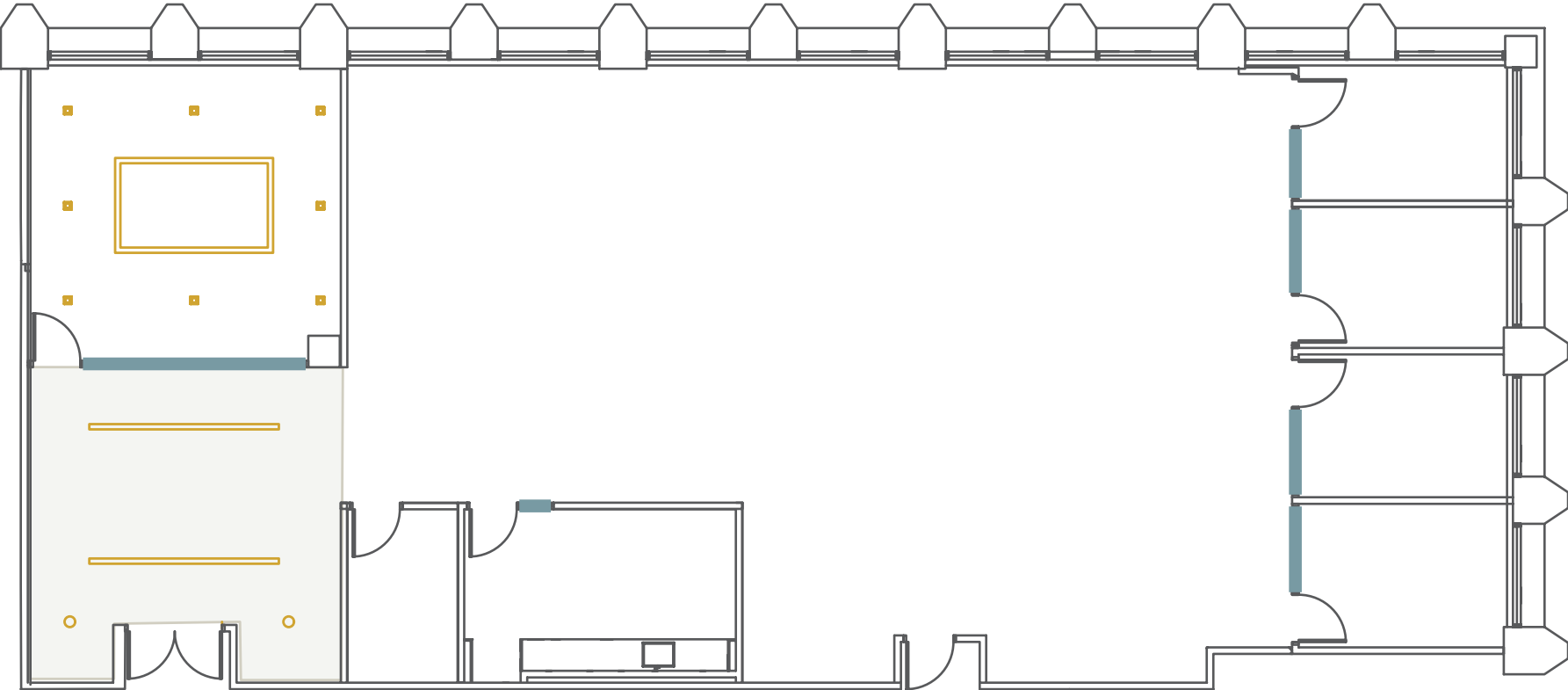


2590 N. First Street

suite 230

total size
±4,406 sqft

| team size | private offices | meeting room |
|-----------|-----------------|--------------|
| 20 | 4 | 1 |



GLASS LIGHTS OPEN CEILING



2590 N. First Street

suite 230



artist rendering

glass partitions



2590 N. First Street

suite 230



artist rendering

glass partitions + specialty lighting + wood laminate flooring



2590 N. First Street

suite 230



artist rendering

built-in appliances + matte black hardware + modern backsplash + polished concrete + stone countertop



2590 N. First Street

suite 230



flooring



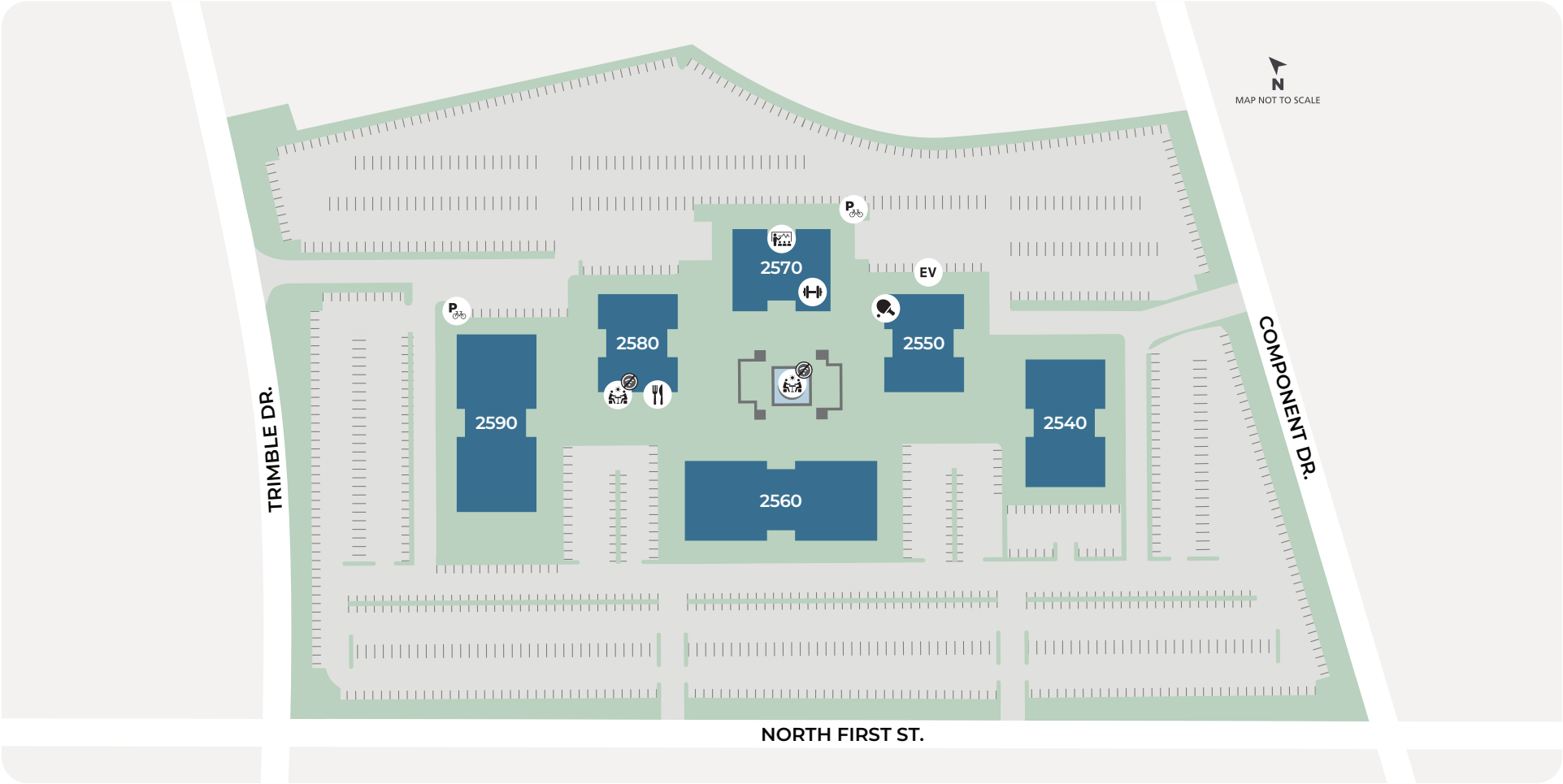
paint scheme



breakroom



silicon valley center




BIKE
PARKING


CAFE/
RESTAURANT


CONFERENCE
CENTER


EV
CHARGING


FITNESS


LOUNGE


OUTDOOR
WORKSPACE



outdoor workspace

Linda Cannatelli

SENIOR DIRECTOR, LEASING
408.330.0129
lcannatelli@irvinecompany.com
CA Lic. 01766061

Ben Knight

EXECUTIVE VICE PRESIDENT
408.453.7441
ben.knight@cbre.com
CA Lic. 01850353

Will Schmidt

SENIOR VICE PRESIDENT
408.453.7408
will.schmidt@cbre.com
CA Lic. 01988485

Geoff Gonzalez

SENIOR ASSOCIATE
408.453.7413
geoff.gonzalez@cbre.com
CA Lic. 02038965



flexplus.com

Flex+ **CBRE**
BY IRVINE COMPANY

All properties for lease by Irvine Management Company, a licensed real estate broker, DRE LIC. #02041810.
Product and amenities are subject to availability. Images may not be to scale. Not all features available in all communities, furniture not included.
Not a representation or warranty. Flex+ is a registered trademark of Irvine Management Company. ©2026 Irvine Management Company. All Rights Reserved. The Sunwave and Irvine Company are registered trademarks of Irvine Management Company.