

Retail Spaces | For Lease



1230 - 1232
Sainte-Catherine Street West, Montreal (Québec)



Lease Terms

Term 5 - 10 years

Suite 1232

Ground Floor 3,153 sq. ft.
Basement approx. 3,000 sq. ft.

Suite 1230

Ground Floor 3,332 sq. ft.
Basement approx. 3,000 sq. ft.

Total

Ground Floor **6,485 sq. ft.**
Basement **approx. 3,000 sq. ft.**

Semi-Gross Rent Contact Us

Hydro Metered

Availability

Suite 1232 April 1st 2027
Suite 1230 February 1st 2026

*Suites can be combined or leased separately

Property Details



Across the street from the new Four Seasons Hotel and Holt Renfrew Ogilvy



Located on Sainte-Catherine Street West between de la Montagne and Drummond streets



The space benefits from premium visibility and excellent foot traffic

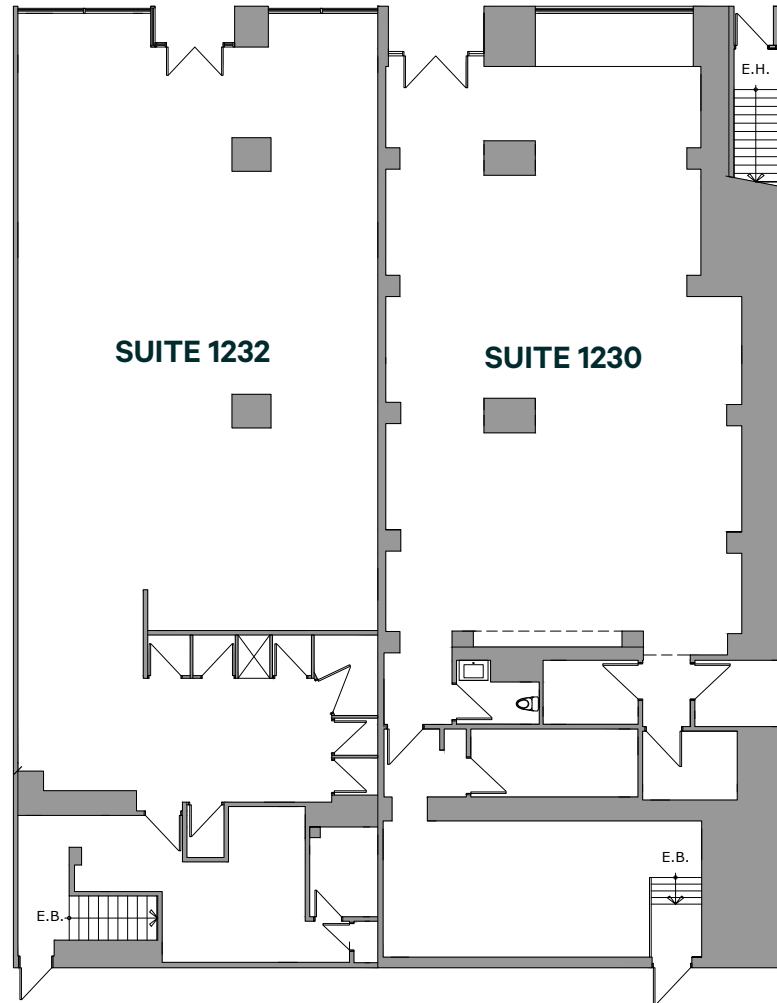


In proximity of the Peel metro station

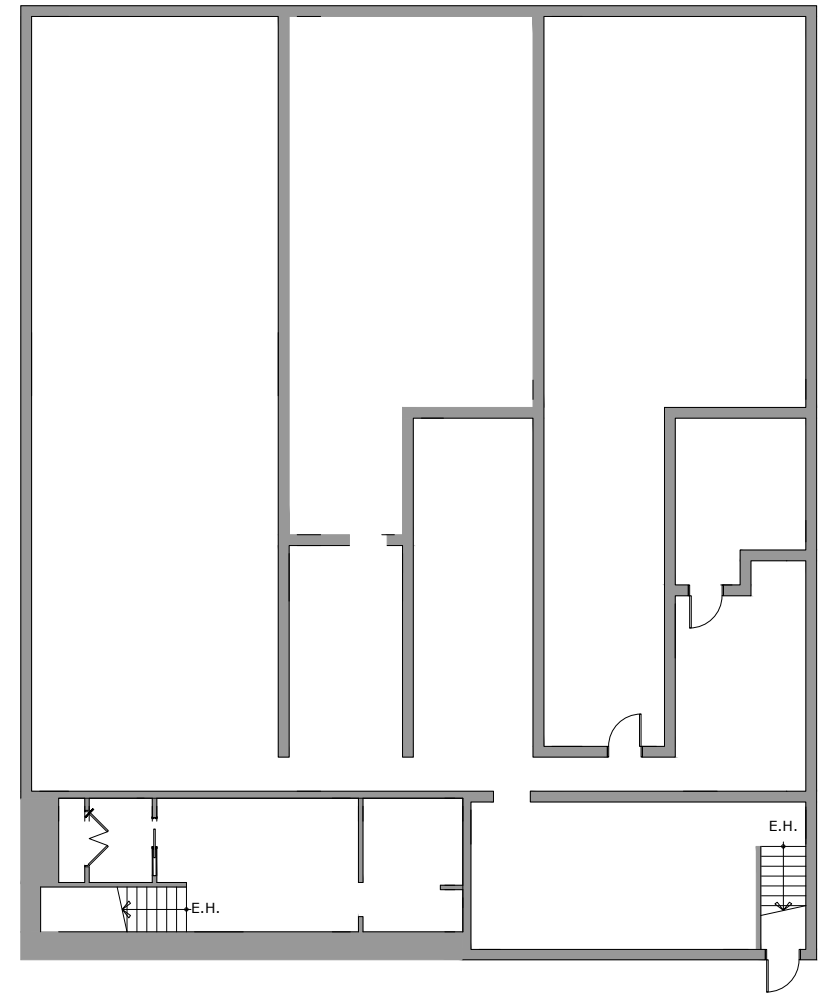


Floor Plans

GROUND FLOOR



BASEMENT



SUITE 1232

Ground Floor: 3,153 sq. ft.
Basement: approx. 3,000 sq. ft.

SUITE 1230

Ground Floor: 3,332 sq. ft.
Basement: approx. 3,000 sq. ft.

TOTAL AREA

Ground Floor: 6,485 sq. ft.
Basement: approx. 3,000 sq. ft.
(With possibility to combine both suites)

Contact Us

Christopher Rundle

Vice President
 Real Estate Broker
 +1 514 375 0818
 christopher.rundle@cbre.com

Bryan Greenberg

Associate Vice President
 Commercial Real Estate Broker
 +1 514 375 2507
 bryan.greenberg@cbre.com

Amanda Angela Herbu

Associate
 Commercial Real Estate Broker
 +1 514 375 0456
 amanda.herbu@cbre.com

CBRE Limited, Real Estate Agency | 1250 René-Lévesque
 Blvd West, Suite 2800 | Montréal, Québec H3B 4W8 | +1 514
 849 6000 | www.cbre.ca

This disclaimer shall apply to CBRE Limited, Real Estate Agency, and to all other divisions of the Corporation; to include all employees and independent contractors ("CBRE"). The information set out herein, including, without limitation, any projections, images, opinions, assumptions and estimates obtained from third parties (the "Information") has not been verified by CBRE, and CBRE does not represent, warrant or guarantee the accuracy, correctness and completeness of the Information. CBRE does not accept or assume any responsibility or liability, direct or consequential, for the Information or the recipient's reliance upon the Information. The recipient of the Information should take such steps as the recipient may deem necessary to verify the Information prior to placing any reliance upon the Information. The Information may change and any property described in the Information may be withdrawn from the market at any time without notice or obligation to the recipient from CBRE. CBRE and the CBRE logo are the service marks of CBRE Limited and/or its affiliated or related companies in other countries. All other marks displayed on this document are the property of their respective owners. All Rights Reserved. Mapping Sources: Canadian Mapping Services canadamapping@cbre.com; DMTI Spatial, Environics Analytics, Microsoft Bing, Google Earth.

