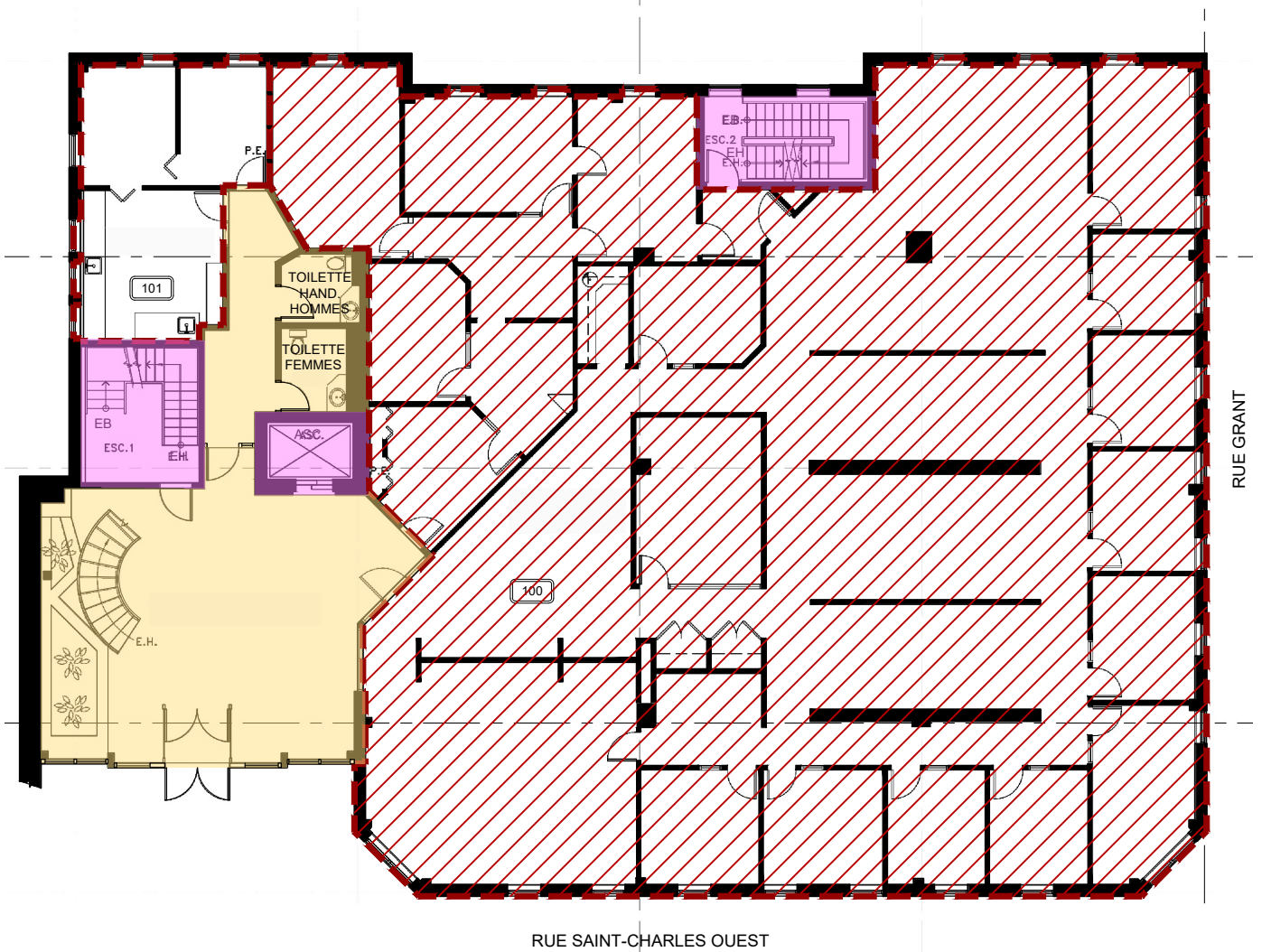


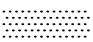




50 RUE SAINT-CHARLES, OUEST
LONGUEUIL, QUÉBEC

SUITE #100



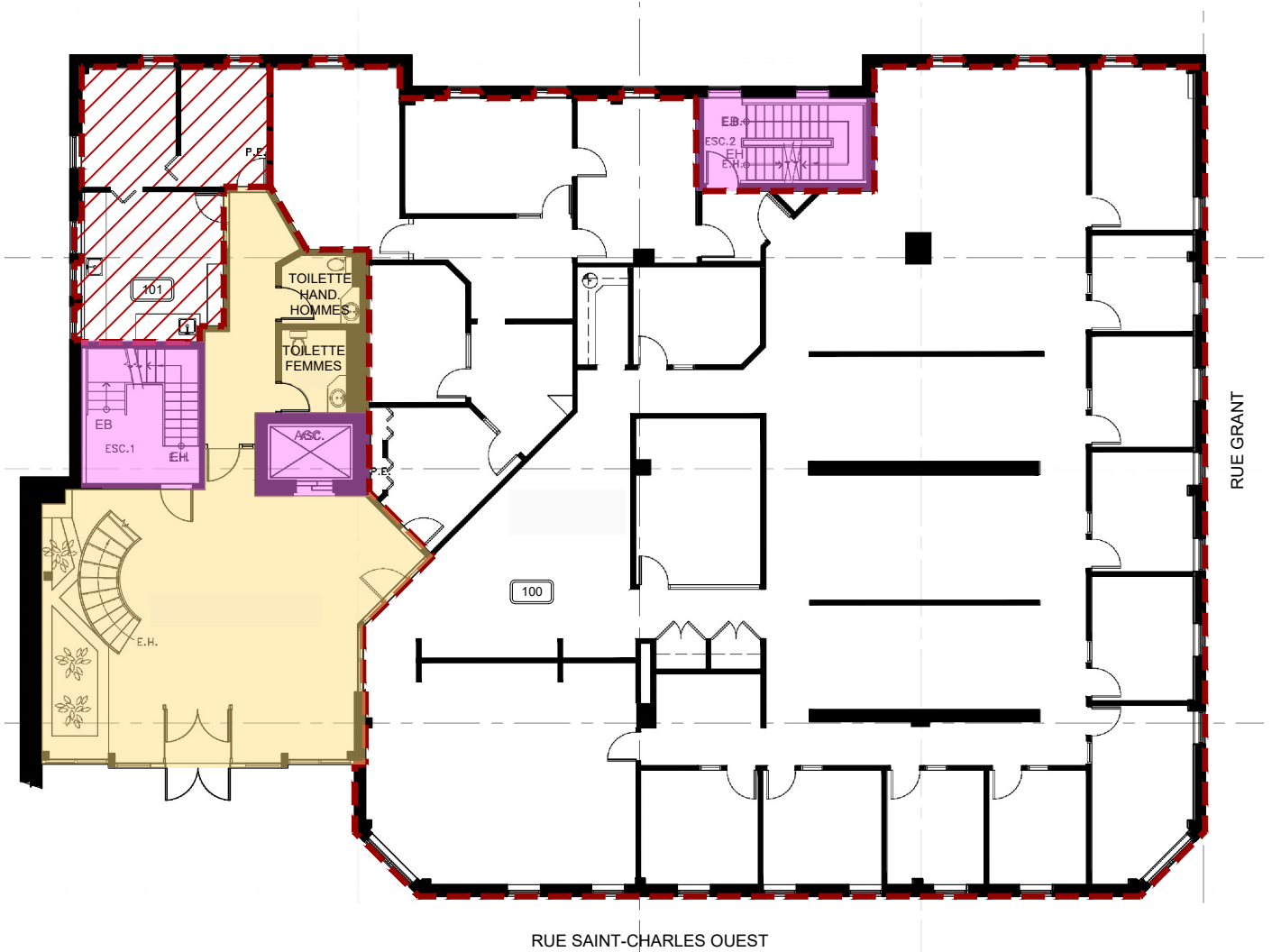
LÉGENDE / LEGEND

	SUPERFICIE (pi.ca) / AREA (sq.ft)
	AIRE D'OCCUPANT / OCCUPANT AREA 5,832.90
	AIRE UTILISABLE (U) / USABLE AREA (U) 6,258.50
	AIRE EXCLU / EXCLUDED AREAS -




	SUPERFICIE (pi.ca) / AREA (sq.ft)
	AIRES DE L'IMMEUBLE COMMUNS / BUILDING COMMON AREAS 1,080.00
	PÉNÉTRATIONS VERTICALES MAJEURES / MAJOR VERTICAL PENETRATIONS 380.58



50 RUE SAINT-CHARLES, OUEST
LONGUEUIL, QUÉBEC

SUITE #101



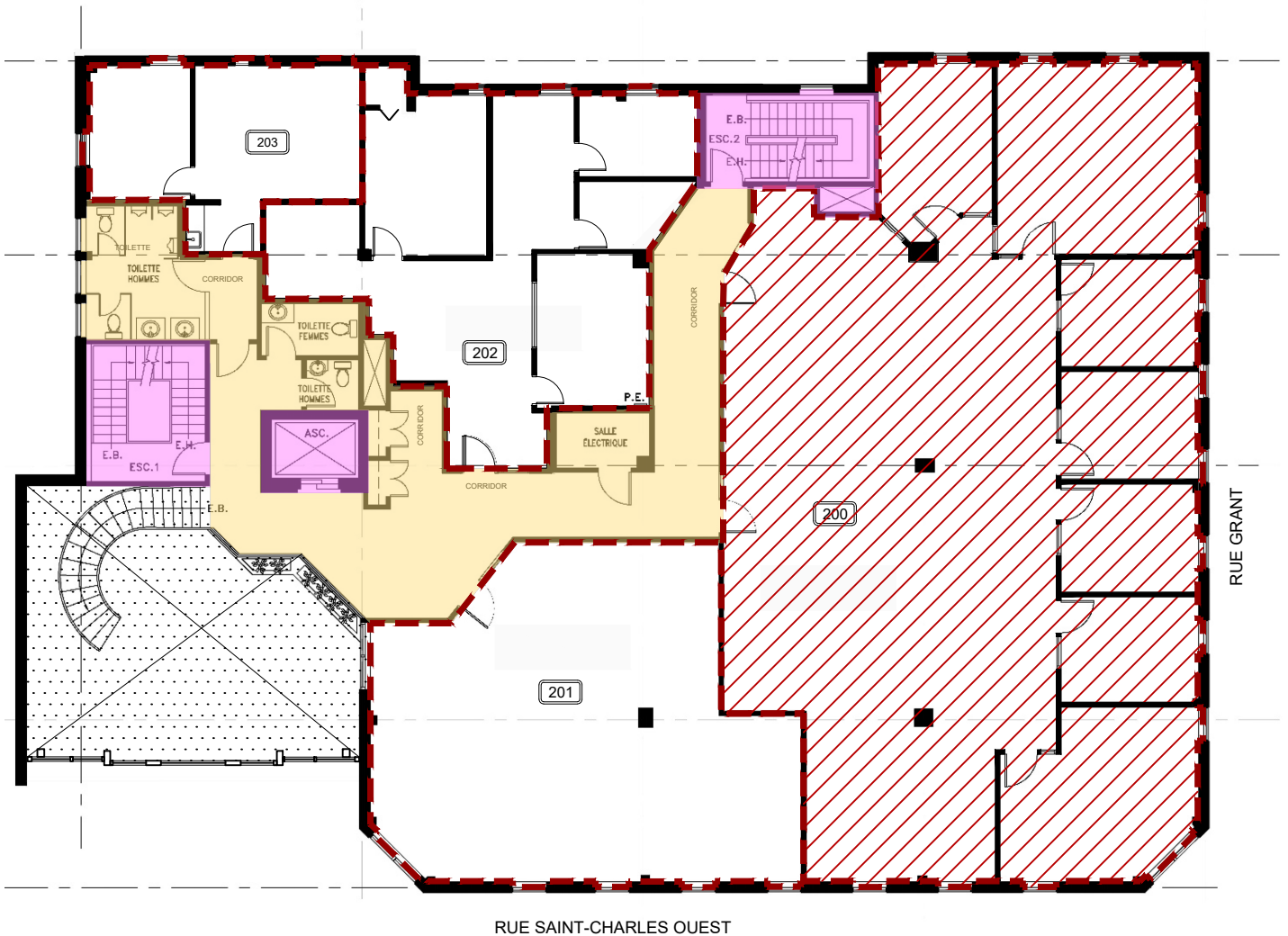
LÉGENDE / LEGEND

	SUPERFICIE (pi.ca) / AREA (sq.ft)
 AIRE D'OCCUPANT / OCCUPANT AREA	425.60
 AIRE UTILISABLE (U) / USABLE AREA (U)	6,258.50
 AIRE EXCLU / EXCLUDED AREAS	-

	SUPERFICIE (pi.ca) / AREA (sq.ft)
 AIRES DE L'IMMEUBLE COMMUNS / BUILDING COMMON AREAS	1,080.00
 PÉNÉTRATIONS VERTICALES MAJEURES / MAJOR VERTICAL PENETRATIONS	380.58

50 RUE SAINT-CHARLES, OUEST
LONGUEUIL, QUÉBEC



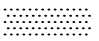
SUITE #200





RUE SAINT-CHARLES OUEST

RUE GRANT

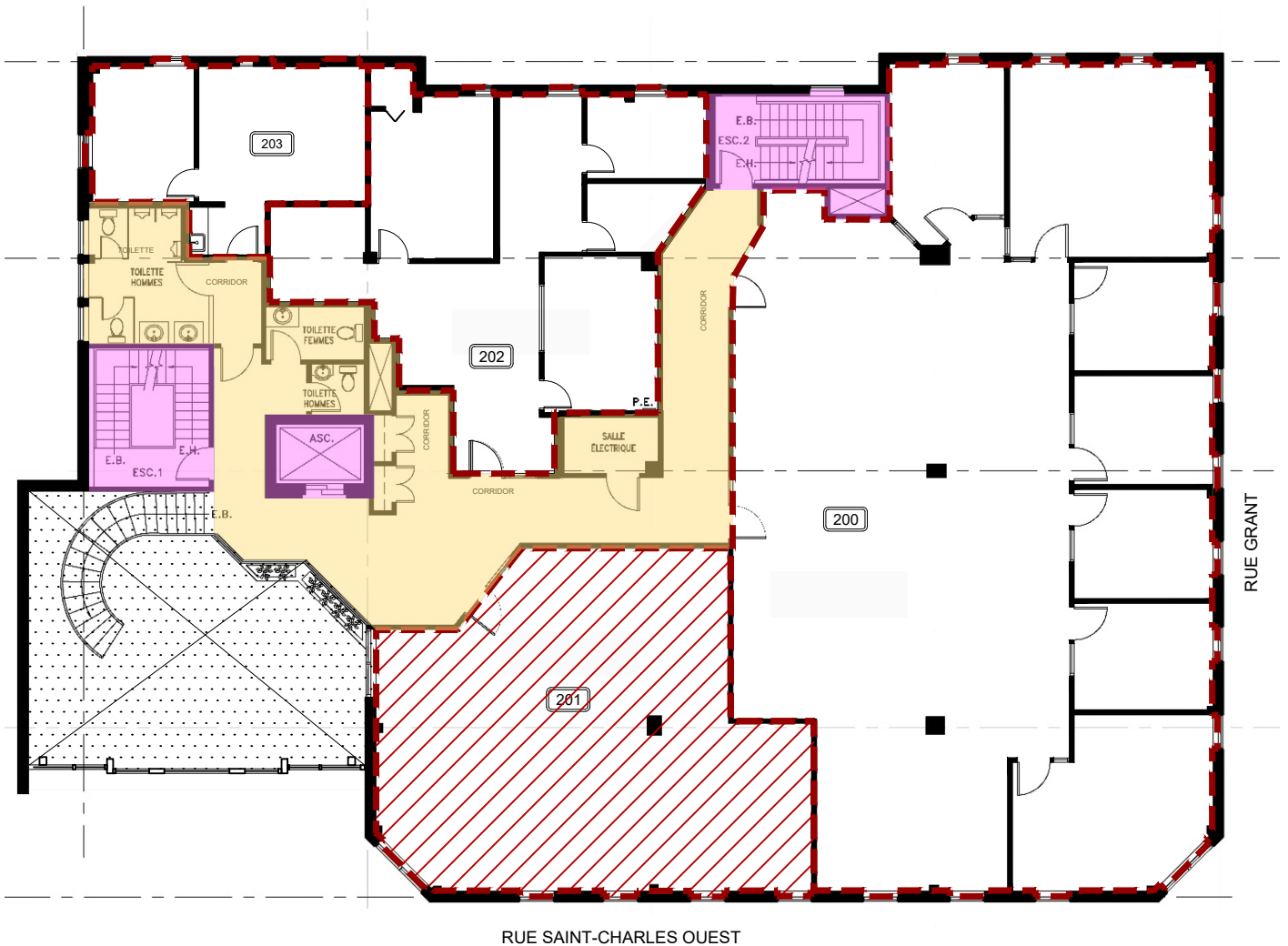
LÉGENDE / LEGEND

	SUPERFICIE (pi.ca) / AREA (sq.ft)
 AIRE D'OCCUPANT / OCCUPANT AREA	3,022.42
 AIRE UTILISABLE (U) / USABLE AREA (U)	5,381.75
 AIRE EXCLU / EXCLUDED AREAS	690.47




	SUPERFICIE (pi.ca) / AREA (sq.ft)
 AIRES DE L'IMMEUBLE COMMUNS / BUILDING COMMON AREAS	1,051.44
 PÉNÉTRATIONS VERTICALES MAJEURES / MAJOR VERTICAL PENETRATIONS	394.67



50 RUE SAINT-CHARLES, OUEST
LONGUEUIL, QUÉBEC

SUITE #201



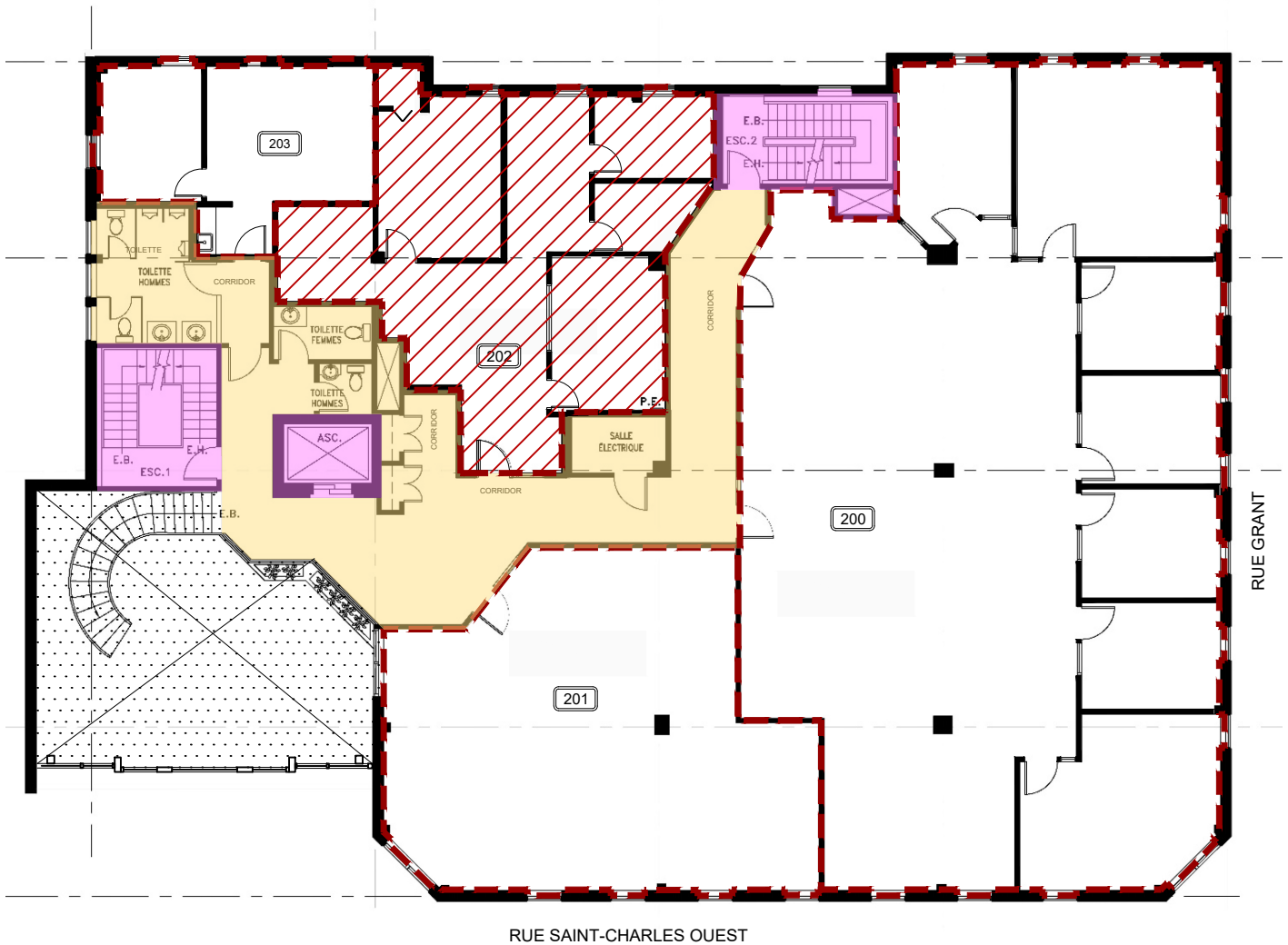
LÉGENDE / LEGEND

	SUPERFICIE (pi.ca) / AREA (sq.ft)
 AIRE D'OCCUPANT / OCCUPANT AREA	1,054.19
 AIRE UTILISABLE (U) / USABLE AREA (U)	5,381.75
 AIRE EXCLU / EXCLUDED AREAS	690.47




	SUPERFICIE (pi.ca) / AREA (sq.ft)
 AIRES DE L'IMMEUBLE COMMUNS / BUILDING COMMON AREAS	1,051.44
 PÉNÉTRATIONS VERTICALES MAJEURES / MAJOR VERTICAL PENETRATIONS	394.67



50 RUE SAINT-CHARLES, OUEST
LONGUEUIL, QUÉBEC

SUITE #202



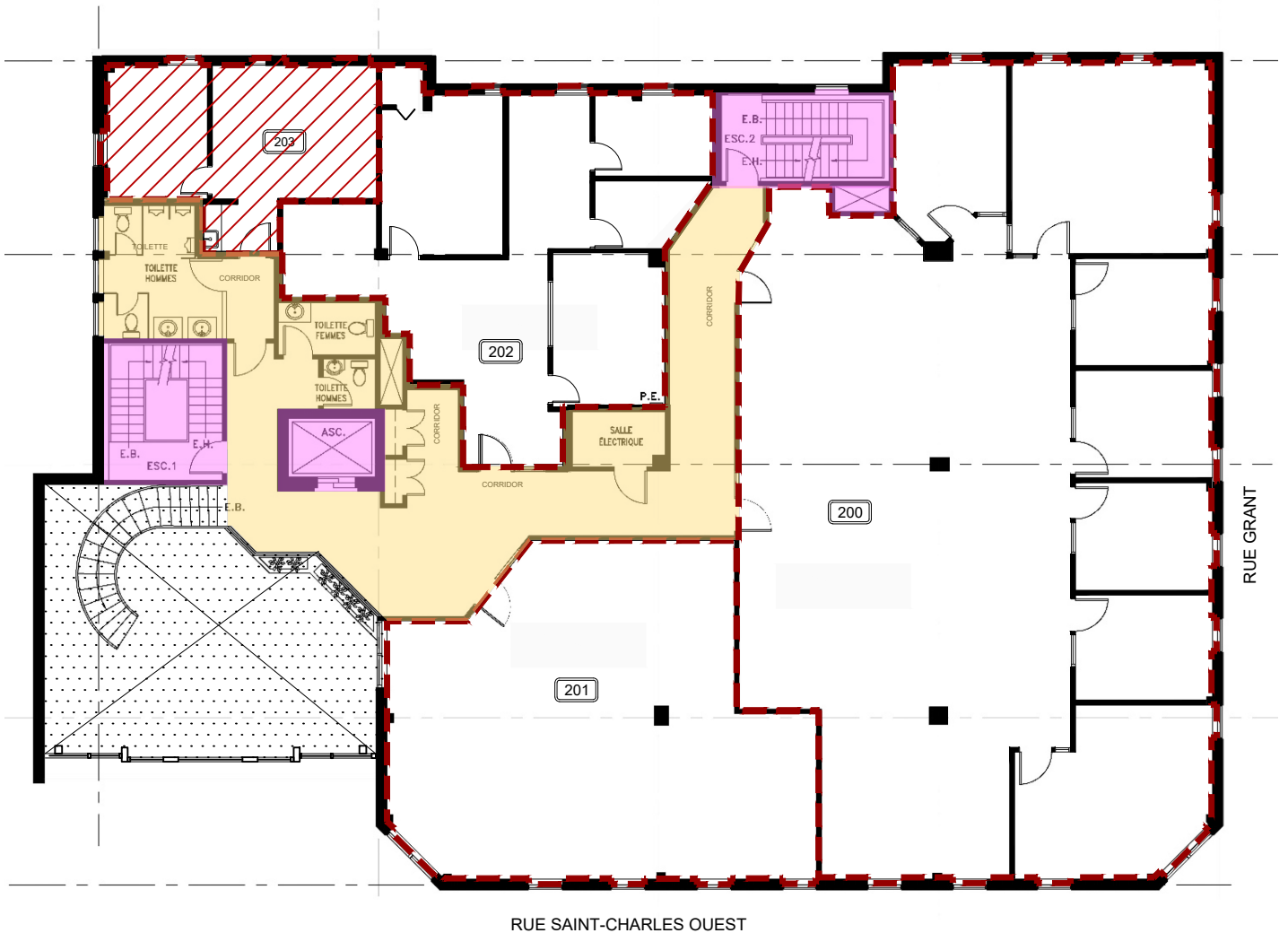
LÉGENDE / LEGEND

	SUPERFICIE (pi.ca) / AREA (sq.ft)
 AIRE D'OCCUPANT / OCCUPANT AREA	943.71
 AIRE UTILISABLE (U) / USABLE AREA (U)	5,381.75
 AIRE EXCLU / EXCLUDED AREAS	690.47




	SUPERFICIE (pi.ca) / AREA (sq.ft)
 AIRES DE L'IMMEUBLE COMMUNS / BUILDING COMMON AREAS	1,051.44
 PÉNÉTRATIONS VERTICALES MAJEURES / MAJOR VERTICAL PENETRATIONS	394.67



50 RUE SAINT-CHARLES, OUEST
LONGUEUIL, QUÉBEC

SUITE #203

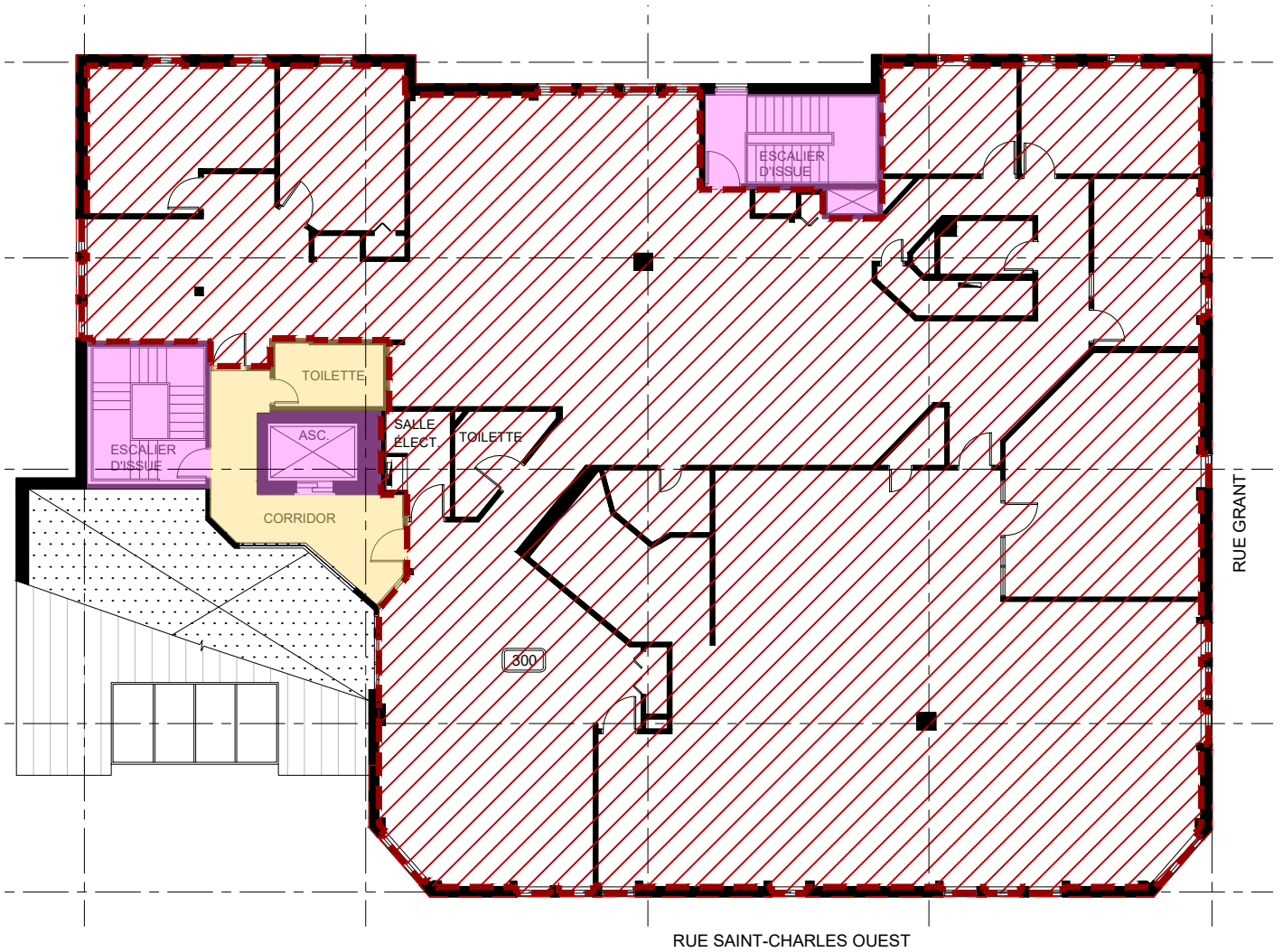


LÉGENDE / LEGEND



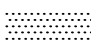
	SUPERFICIE (pi.ca) / AREA (sq.ft)
 AIRE D'OCCUPANT / OCCUPANT AREA	361.43
 AIRE UTILISABLE (U) / USABLE AREA (U)	5,381.75
 AIRE EXCLU / EXCLUDED AREAS	690.47

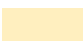

	SUPERFICIE (pi.ca) / AREA (sq.ft)
 AIRES DE L'IMMEUBLE COMMUNS / BUILDING COMMON AREAS	1,051.44
 PÉNÉTRATIONS VERTICALES MAJEURES / MAJOR VERTICAL PENETRATIONS	394.67

50 RUE SAINT-CHARLES, OUEST
 LONGUEUIL, QUÉBEC
 SUITE #300



LÉGENDE / LEGEND

	SUPERFICIE (pi.ca) / AREA (sq.ft)
 AIRE D'OCCUPANT / OCCUPANT AREA	6,157.67
 AIRE UTILISABLE (U) / USABLE AREA (U)	6,157.67
 AIRE EXCLU / EXCLUDED AREAS	722.82

	SUPERFICIE (pi.ca) / AREA (sq.ft)
 AIRES DE L'IMMEUBLE COMMUNS / BUILDING COMMON AREAS	238.59
 PÉNÉTRATIONS VERTICALES MAJEURES / MAJOR VERTICAL PENETRATIONS	401.58

50 RUE SAINT-CHARLES, OUEST
LONGUEUIL, QUÉBEC
PLAN DU SOUS-SOL



LÉGENDE / LEGEND		SUPERFICIE (pi.ca) / AREA (sq.ft)
	AIRES DE L'IMMEUBLE COMMUNS / BUILDING COMMON AREAS	1,366.48
	PÉNÉTRATIONS VERTICALES MAJEURES / MAJOR VERTICAL PENETRATIONS	309.28
	AIRE STATIONNEMENT (EXCLU) / PARKING AREA (EXCLUDED)	5,540.00

50 St Charles Ouest, Longueuil, QC - ANSI/BOMA Z65.1-2010 Office Building Standard(2ème et 3ème étage / 2nd and 3rd floor), Method A & ANSI/BOMA Z65.5 - 2020 Retail Standard (Rez-de-chaussée / Ground floor)																	préparé par DESIGNNFA Inc		
A	B	C	D	E	F	G	H	I	J	K	L	M	N	O	P	Q	R	S	
	CALCULS PRELIMINAIRES (PAS POUR LA LOCATION) / PRELIMINARY CALCULATIONS (NOT FOR LEASING)					ALLOCATIONS INTERMÉDIAIRES (PAS POUR LA LOCATION) / INTERMEDIATE ALLOCATIONS (NOT FOR LEASING)							CALCULS FINAUX / FINAL CALCULATIONS			AJUSTEMENTS OPTIONNELS / OPTIONAL ADJUSTMENTS			
NIVEAU / FLOOR	AIRE INTÉRIEURE BRUT / INTERIOR GROSS AREA	PÉNÉTRATIONS VERT. MAJ. / MAJOR VERTICAL PENETRATIONS	STATIONNEMENT / PARKING(AIRE EXCLU / EXCLUDED AREAS)	AIRES D'ENTREPOSAGE D'OCCUPANTS / OCCUPANT STORAGE	AIRE PRÉLIMINAIRE D'ÉTAGE / PRELIMINARY FLOOR AREA	LOCAUX / SPACE ID	AIRE D'OCCUPANT / OCCUPANT AREA	AIRES D'AGRÈMENT DE L'IMMEUBLE / BUILDING AMENITY AREAS	AIRE UTILISABLE (U) / USABLE AREA (U)	AIRES DE SERVICE IMME. / BUILDING SERVICES AREA	AIRES DE SERVICE ET D'AGRÈMENT ÉTAGE / FLOOR SERVICE AND AMENITY AREAS	FACTEUR L/U (ÉTAGE) / R/U RATIO (FLOOR)	AIRES OCCUPANTS + AIRES ATTRIBUÉES (O) / OCCUPANT + ALLOCATED AREA (O)	FACTEUR L/O (ÉDIFICE) / R/O RATIO (BUILDING)	FACTEUR DE CHARGE UNIQUE A / LOAD FACTOR A	AIRE LOCATIVE / RENTABLE AREA	FACTEUR DE CHARGE CAPÉ / I CAPPED LOAD FACTOR	AIRE LOCATIVE CAPÉ / CAPPED RENTABLE AREA	
PLAN DU REZ-DE-CHAUSSÉE / GROUND FLOOR			154.56			100	5,832.90											5,832.90	
			80.42			101	425.60											425.60	
			145.6															-	
TOTAUX DE L'ÉTAGE / FLOOR TOTALS	7,719.08	380.58	-	-	7,338.50		6,258.50	-	6,258.50	1,080.00	-	1.0000	6,258.50	-	-	6,258.50			
DEUXIÈME ÉTAGE / SECOND FLOOR			230.54			200	3,022.42											-	
			148.11			201	1,054.19											-	
			16.02			202	943.71			1051.44				1.2099	1.2099		1,141.83		
						203	361.43							1.2099	1.2099		-		
TOTAUX DE L'ÉTAGE / FLOOR TOTALS	7,518.33	394.67	690.47	-	6,433.19		5,381.75	-	5,381.75	1,051.44	-	1.0000	5,381.75	1.2099	1.2099	6,511.60			
TROISIÈME ÉTAGE / 3RD FLOOR			386.92			300	6,157.67							1.2099	1.2099		948.82		
			14.66														-		
TOTAUX DE L'ÉTAGE / FLOOR TOTALS	7,520.66	401.58	722.82	-	6,396.26		6,157.67	-	6,157.67	238.59	-	1.0000	6,157.67	1.2099	1.2099	7,450.42			
SOUS-SOL / BASEMENT																			
			176.31	5540						784.19									
			132.97							42.09									
TOTAUX DE L'ÉTAGE / FLOOR TOTALS	7,215.76	309.28	5,540.00	-	1,366.48		-	-	-	1,366.48	-		-	-	-	-			
TOTAUX DE L'IMMEUBLE / BUILDING TOTALS	29,973.83	1,486.11	6,953.29	-	21,534.43		17,797.92	-	17,797.92	3,736.51	-		17,797.92			20,220.52			