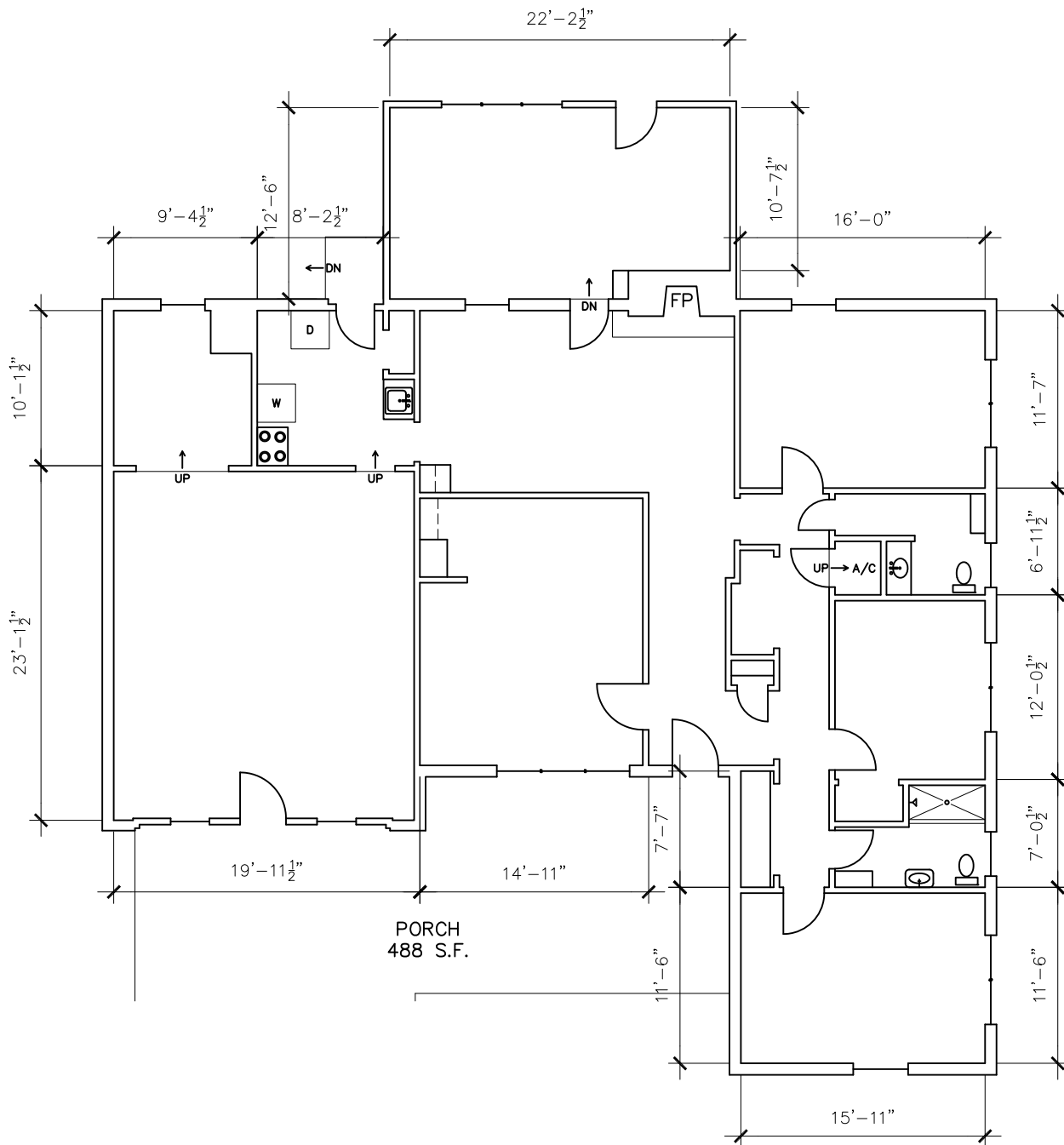


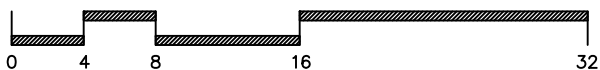
NOTE:

1. DIMENSIONS ARE TO SHOW ROOM SIZES.  
SQUARE FOOTAGE CALCULATIONS ARE DONE  
TO BOMA STANDARDS.

2. GROSS LEASABLE AREA DOES NOT  
INCLUDE PORCH SQUARE FOOTAGE.



SCALE: 3/32" = 1'-0"



Drawing for:  
Barefoot Holdco  
Austin, Texas

8060 HWY 209 WEST  
AUSTIN, TEXAS  
GROSS LEASABLE AREA: 2,523 S.F.

THE MEASUREMENTS, FLOOR PLANS,  
AND CALCULATIONS ARE ACCURATE  
USING BOMA MEASUREMENT  
STANDARDS FOR RETAIL BUILDINGS.  
ANSI/BOMA Z65.5 - 2020  
Project No.: 2554.01  
Date: June 17, 2025  
©2025

**DIMENSIONS**  
FLOORPLANS®  
AUSTIN ★ TEXAS  
DIMENSIONSFLOORPLANS.COM  
PHONE: (512) 342-0114