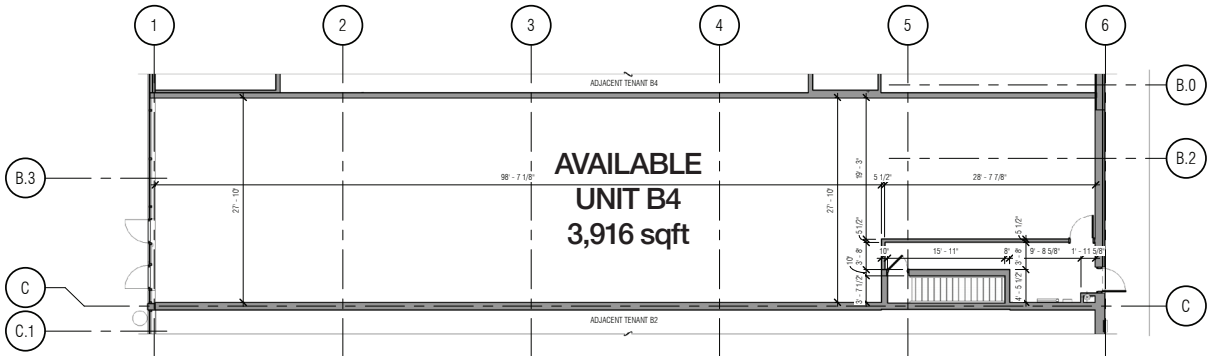


# FLOOR PLAN - B4

150 CHURCHILL BLVD, SAULT STE. MARIE, ON

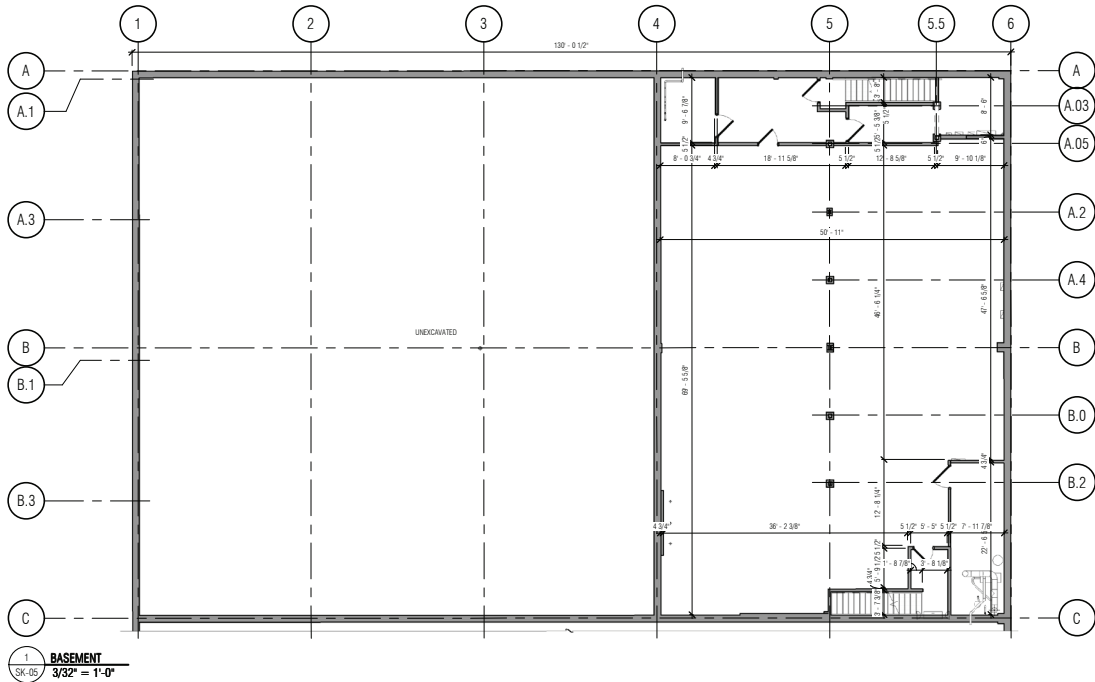


1 GROUND FLOOR  
SK-05 3/32" = 1'-0"

150 CHURCHILL BLVD.  
SAULT STE MARIE, ON

GROUND  
FLOOR

PROJECT:23608-A+F SCALE: 3/32" = 1'-0"



1 BASEMENT  
SK-05 3/32" = 1'-0"

150 CHURCHILL BLVD.  
SAULT STE MARIE, ON

BASEMENT

PROJECT:23608-A+F SCALE: 3/32" = 1'-0"



THE FLOOR PLAN(S) INCLUDED HEREIN IS FOR ILLUSTRATIVE PURPOSES ONLY AND MAY NOT BE ACCURATE. TENANT & TENANT'S REALTOR RESPONSIBLE FOR VERIFYING ALL MEASUREMENTS. LANDLORD AND/OR GOUDY REAL ESTATE CORP SHALL NOT BE LIABLE FOR ANY ERRORS, OMISSIONS OR DISCREPANCIES IN THE FLOOR PLAN OR FOR ANY RELIANCE PLACED ON THEM BY THE TENANT.