

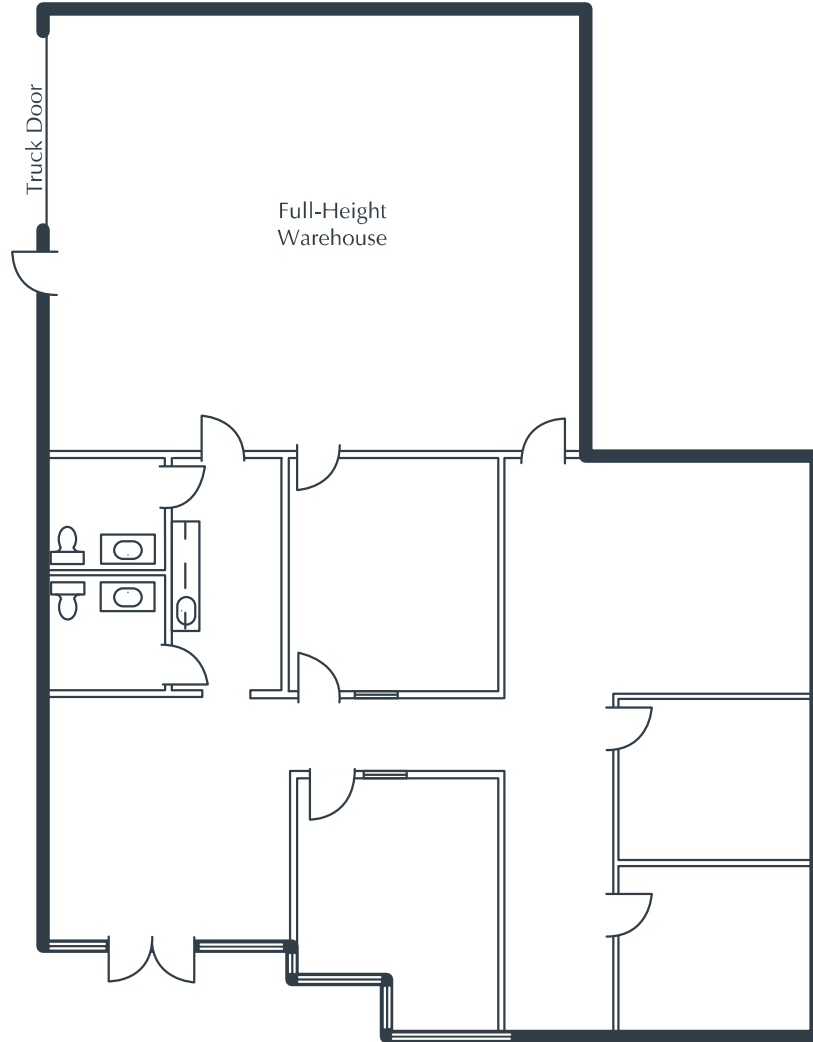
# AMANECER BUSINESS PARK

944 Calle Amanecer, Suite F  
San Clemente, CA

3,790 Square Feet

\$1.65 SF/MO

Triple Net



## NOTES

- Reception
- Window Office
- 3 Interior Offices
- 2 Restrooms
- Coffee Bar
- Open Work Area
- Ground-Level Truck Door
- Approximately 1,420 sq. ft. of Full-Height Warehouse
- Part of a Professionally Managed Business Park

Created by Olen Commercial Realty Corp., 2022.  
Information is not to be published or copied without  
written approval. Square footage and floor plans are  
estimates and should be separately verified. All rates,  
terms, floor plans, and building facts are subject to  
change without notice.

ea 05.29.2025

**LAURA PRESTON-FAYERMAN**

Senior Leasing Director

949.719.7205

lfayerman@olen.com



Seven Corporate Plaza

Newport Beach, CA

949.644.6536

www.olen.com