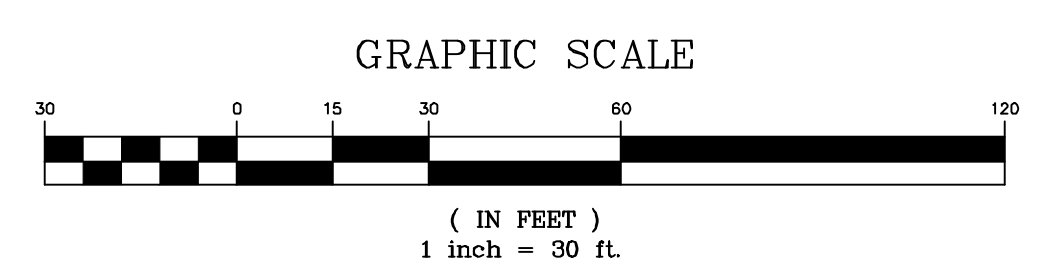
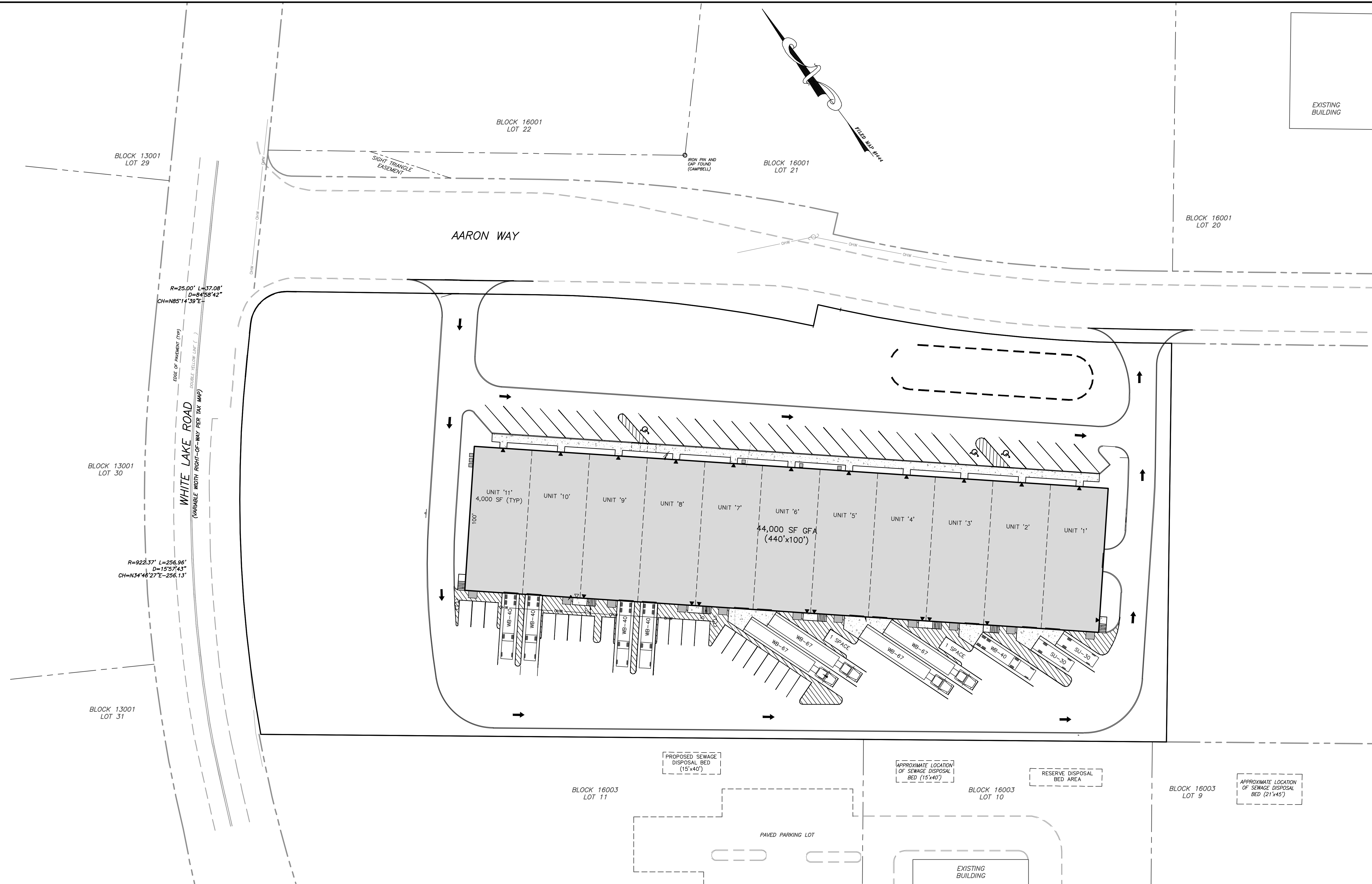


J:\edsk\PROJ\19066\DW\Preliminary Site Plan_19066.dwg 02/09/24 02:22:08PM, Trevor, Layout.LAYOUT (3)



DATE	REVISION
2/9/24	PER UPDATED UTILITY EASEMENT INFORMATION FOR DESCRIPTION, SHEETS #1 & #3 ONLY.
3/17/21	PER BOARD ENGINEER'S REVIEW COMMENTS
9/17/20	PER SPARTA PLANNING BOARD CONDITIONS OF APPROVAL

DYKSTRA WALKER
DESIGN DW GROUP
 PROFESSIONAL ENGINEERS, PLANNERS & SURVEYORS
 21 BOWLING GREEN PARK WAY, SUITE 204 - LAKE HOPATCONG, NJ 07849
 PHONE (973) 843-4800 - FAX (973) 663-0042
 WWW.DYKSTRAWALKER.COM

MARC G. WALKER, P.E.
 PROFESSIONAL ENGINEER, N.J. LIC. NO. 24GE03640900

SITE LAYOUT PLAN
 PRELIMINARY SITE PLAN

BLOCK 16003, LOTS 1 & 2
 #2 & #4 AARON WAY
 TOWNSHIP OF SPARTA
 SUSSEX COUNTY NEW JERSEY

SCALE: 1" = 30'
JOB NO.: 19066
DRAWN BY: KJR
CHECKED BY: MGW
DATE: 11/25/19
SHEET NO. 3 OF 13