

For Lease

Powerline Park

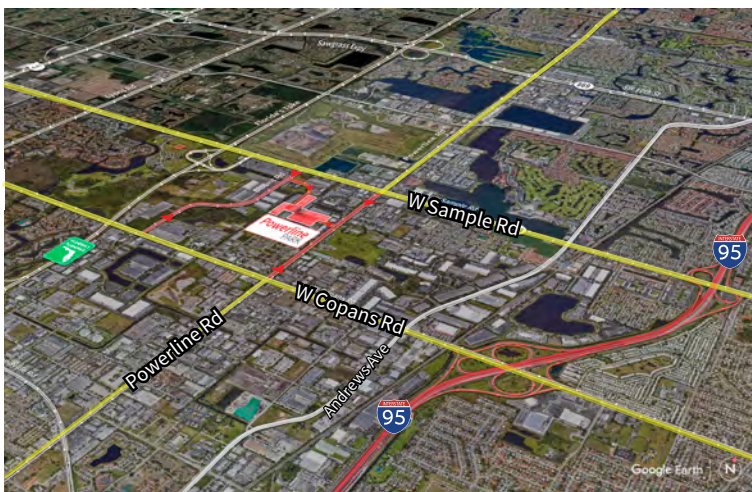
3000 NW 25th Avenue
Pompano Beach, Florida 33069



Industrial Space For Lease
3,280 SF

Powerline Park

3000 NW 25th Avenue, Pompano Beach, Florida 33069



Location

- Easy access off Sample Road and Powerline Road
- Excellent access to I-95 and the Florida Turnpike
- Equidistant to Fort Lauderdale/Hollywood International Airport and Palm Beach International Airport

Space Features

- 3,280 SF total
- 871 SF of office
- 2,409 SF of warehouse
- 16' clear height
- One (1) grade level door
- End-cap space
- Parking ratio: 2.0/1,000 sf



© 2025 Jones Lang LaSalle IP, Inc.

Yuri Quispe
M +1 772 201 5305
yuri.quispe@jll.com

Peter Johnston
M +1 954 980 3224
peter.johnston@jll.com

Peter Sheridan
M +1 954 439 4941
peter.sheridan@jll.com



For Lease

Powerline Park

3000 NW 25th Avenue, Pompano Beach, Florida 33069

Powerline Park Recently Renovated Office & Warehouse



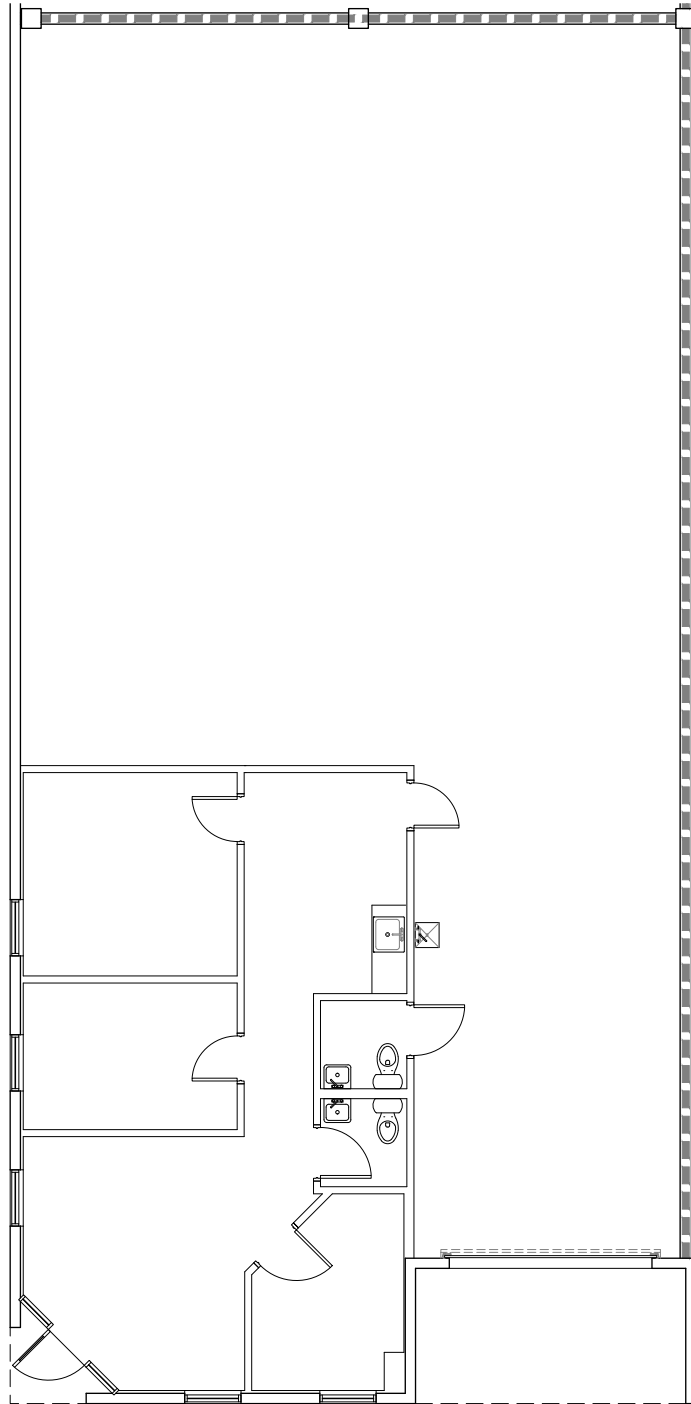
For Lease

Powerline Park

3000 NW 25th Avenue, Pompano Beach, Florida 33069

Powerline Park Floor Plan

Total: 3,280 SF
Office: 871 SF
Warehouse: 2,409 SF



For Lease

Powerline Park

3000 NW 25th Avenue, Pompano Beach, Florida 33069

Powerline Park Site Plan

 - Subject Property



Building	Suite	Total (SF)	Office (SF)	Warehouse (SF)	Loading	Clear Height	Available Date
6	3000 - 2	3,280	871	2,409	1 G	16'	Now

