



370-502 STATE ROAD | NORTH DARTMOUTH, MA

DARTMOUTH TOWNE CENTER (EAST)

1,529 - 27,704 SF AVAILABLE



PROJECT DETAILS

DARTMOUTH TOWNE CENTER (EAST) • 1,529 - 27,704 SF AVAILABLE • RETAIL

PROPERTY HIGHLIGHTS

- Anchored by TJ Maxx, Barnes & Noble, with Dollar Tree and others
- Shadow Anchors: Home Depot & BJ's Wholesale Club
- Cross Access with the North Dartmouth Mall with over 765,000 SF of Retail
- Ample Parking
- Traffic Counts of over 27,300 cars per day
- Pylon Signage
- Located in the epicenter of this dense retail corridor

OFFERING SUMMARY

LEASE RATE	Call for Information
AVAILABLE SF	1,529 - 27,704 SF

DEMOGRAPHICS

TOTAL POPULATION

3 MILE	5 MILES	7 MILES
21,154	104,882	153,616

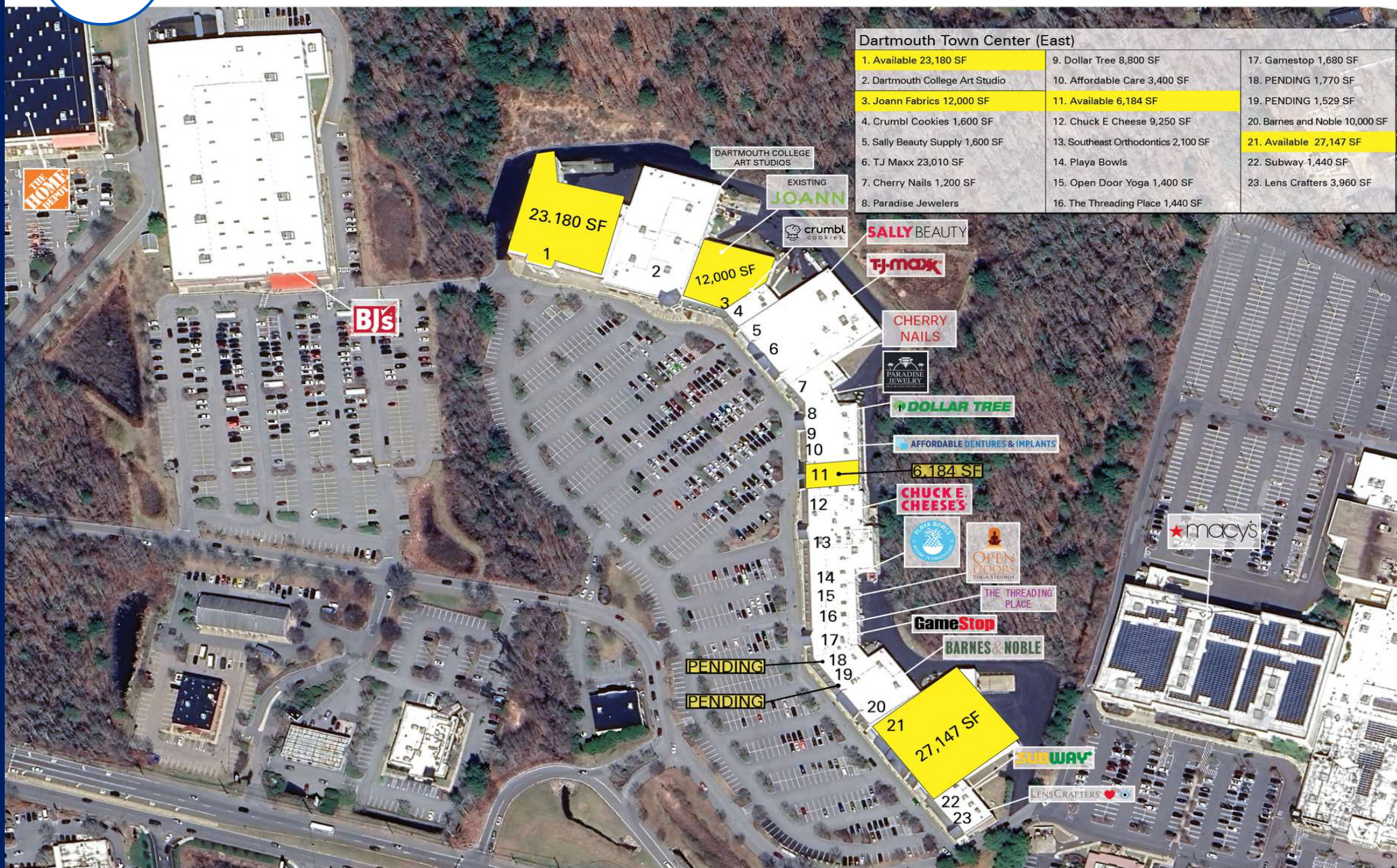
MEDIAN HH INCOME

3 MILE	5 MILES	7 MILES
\$62,439	\$46,743	\$53,492



SITE PLAN

DARTMOUTH TOWNE CENTER (EAST) • 1,529 - 27,704 SF AVAILABLE • RETAIL





370-502 STATE ROAD | NORTH DARTMOUTH, MA
DARTMOUTH TOWNE CENTER (EAST)

1,529 - 27,704 SF AVAILABLE | RETAIL

LESLIE COTTER
781.883.8464
LCOTTER@ATLANTICRETAIL.COM

AMI CIPOLLA
617.369.5913
ACIPOLLA@ATLANTICRETAIL.COM



BOSTON
THE PRUDENTIAL CENTER
55 HUNTINGTON AVENUE
BOSTON, MA 02199
617.239.3600

ALBANY
ATLANTA
CHARLOTTE
LOS ANGELES
NEW YORK CITY
ORLANDO
PITTSBURGH
WEST PALM BEACH

WWW.ATLANTICRETAIL.COM

 [LINKEDIN.COM/COMPANY/ATLANTIC-RETAIL-PROPERTIES](https://www.linkedin.com/company/atlantic-retail-properties)

 [INSTAGRAM.COM/ATLANTIC_RETAIL](https://www.instagram.com/atlantic_retail)

 **REALTY RESOURCES**  **CHAINLINKS**
RETAIL ADVISORS