

4041 TRANSPORT STREET, SUITE C | VENTURA, CA

FOR LEASE
HIGHLY EFFICIENT INDUSTRIAL SPACE

2,716 SQUARE FEET VACANT



PROPERTY HIGHLIGHTS

- 2,716 sf Warehouse available for immediate occupancy.
- Sublease through 1/31/2027. Longer term is available.
- \$3,635 (\$1.34/sf) Industrial Gross per month
- \$488.00 (\$0.18/sf) CAM fee per month
- 200 Amps
- 2 Restrooms
- 18' Clear Height
- Sprinklered
- 5 Parking Spaces
- MPD Zone, allows a wide variety of industrial manufacturing uses.
- Available 4/1/26



SUITE C

GARY COHEN

CELL: (818) 804-1227

EMAIL: GCOHEN@MARCUSMILLICHAP.COM

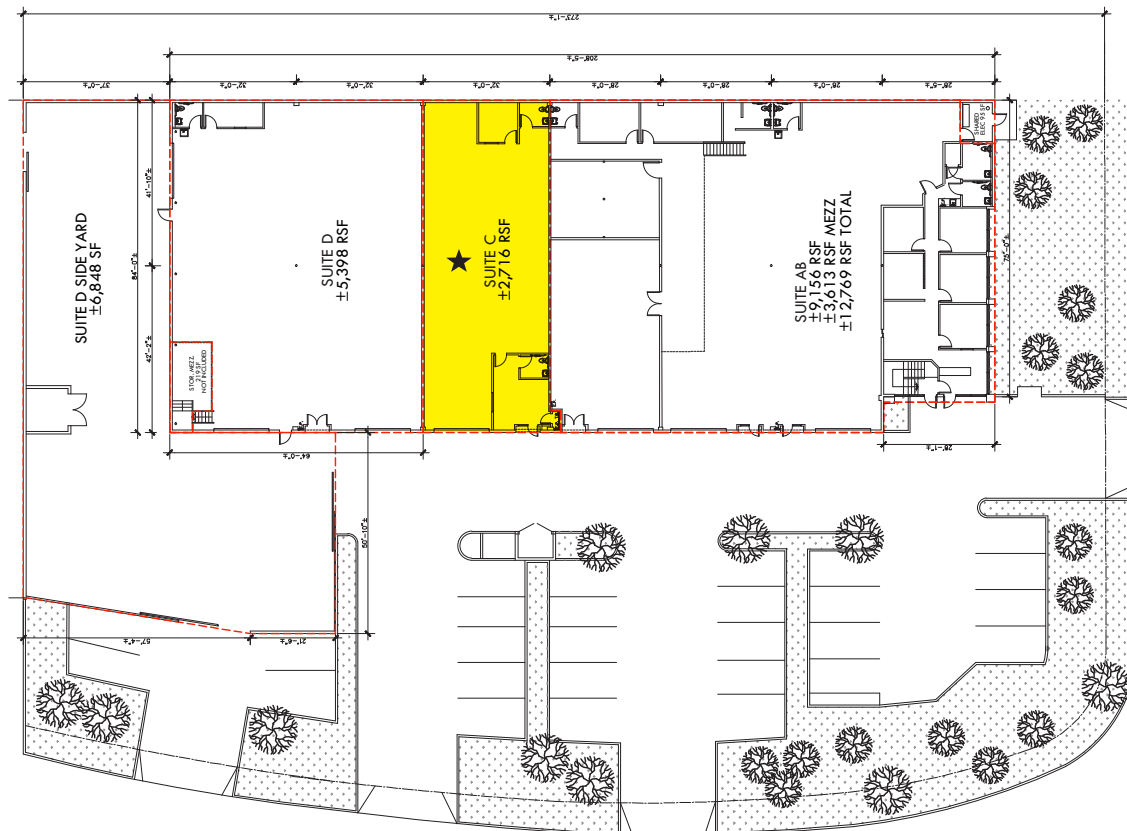
VENTURA, CA



4041 TRANSPORT ST
SUITE C

Any property descriptions, artwork, renderings, tables, site plans, land surveys, registry plans, zoning plans, maps, aerial depictions, or any other related information or descriptions, as set forth herein, have been included for illustrative purposes only and should not be relied upon when performing due diligence or making any investment decisions. Source: Google Earth, Google My Maps, 2026

WALTER ST (7,600 VPD)



TRANSPORT ST (15,000 VPD)



GARY COHEN
First Vice President Investments
Office: 805.351.7143 Cell: 818.804.1227
gcohen@marcusmillichap.com
License CA 00988655