

**100 N 1ST STREET**  
**Burbank, CA**

**OFFICE SPACES**  
**FOR LEASE**



**LEE & ASSOCIATES**  
COMMERCIAL REAL ESTATE SERVICES  
Corporate ID #01191898

**TODD WUSCHNIG**  
Principal  
818.933.0301

twuschnig@lee-re.com  
Lic # 01367230

**JENNIFER DONALDSON**  
Principal  
818.933.0347

jdonaldson@lee-re.com  
Lic # 01317737

No warranty or representation is made to the accuracy of the foregoing information. Terms of sale or lease and availability are subject to change or withdrawal without notice.

**100 N 1ST STREET**  
**Burbank, CA**

**OFFICE SPACES**  
**FOR LEASE**



### PROPERTY DETAILS

**Location:** 100 N 1st Street

**Availability:** Suite 400 - 7,467 SF  
Suite 402 - 2,555 SF

*\*Suite 400 & 402 are contiguous for a total of 10,022 SF*

**Lease Rate:** \$3.30/RSF Full Service Gross

**Parking:** 5/1000 at \$95/mo. (Unreserved)

### SUITE HIGHLIGHTS

- Private Balconies
- Kitchen
- Corner Suite with Great Window Line
- Light and Bright Suite

### PROPERTY HIGHLIGHTS

- Prime Downtown Burbank Location
- On-site Dog Park
- Beautiful Landscaping and Outdoor Seating Areas
- Immediate Access to the 5 Freeway
- Bus Lines and Metrolink Nearby
- Public Parking Lot with Free 2-Hour Parking Across the Street
- Walking Distance to many Restaurants, Banking, Shopping and more!

**100 N 1ST STREET**  
**Burbank, CA**

**OFFICE SPACES**  
**FOR LEASE**



**100 N 1ST STREET**  
**Burbank, CA**

**OFFICE SPACES**  
**FOR LEASE**



**100 N 1ST STREET**  
**Burbank, CA**

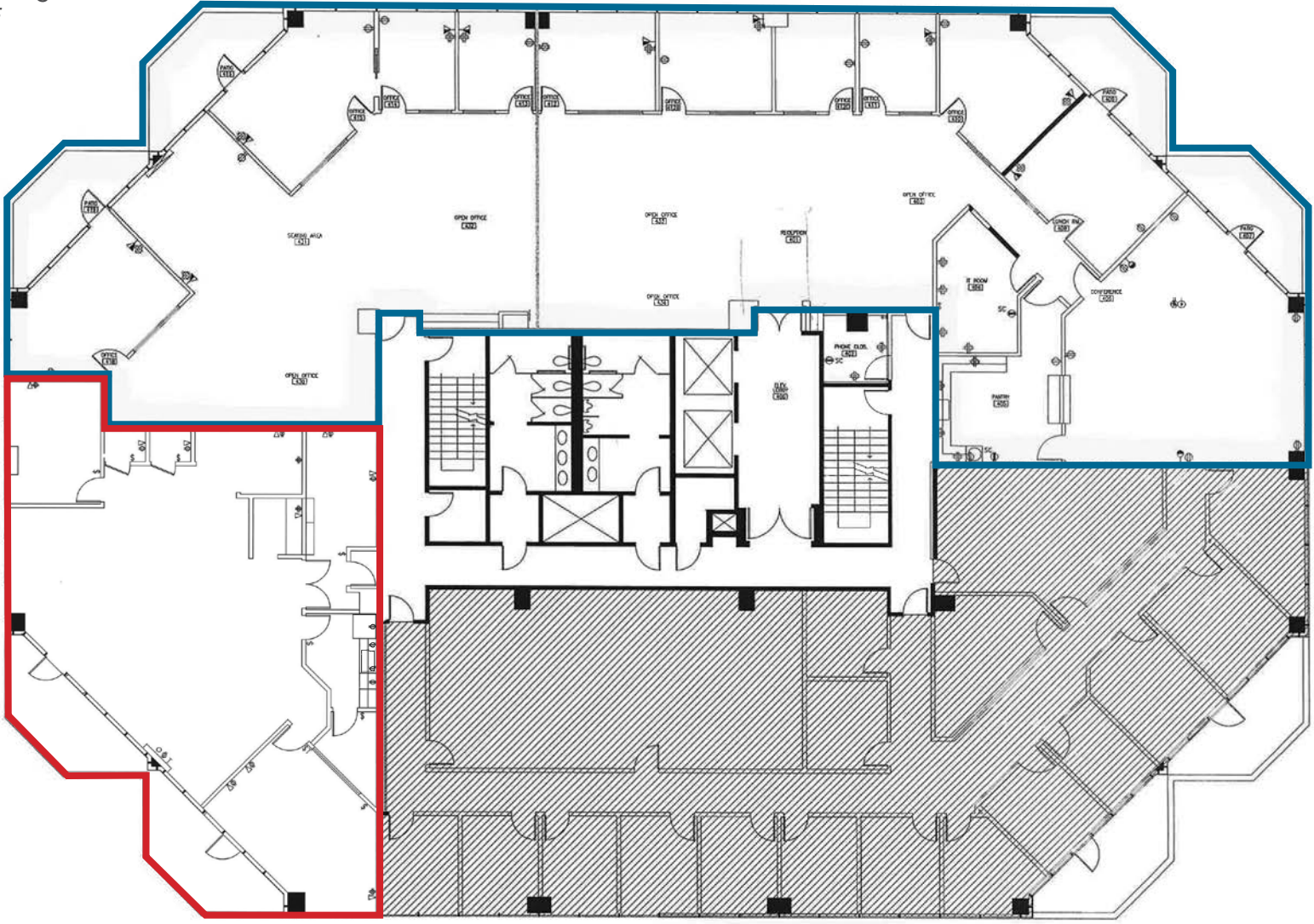
**OFFICE SPACES**  
**FOR LEASE**



# 100 N 1ST STREET Burbank, CA

# OFFICE SPACES FOR LEASE

Suite 400 - 7,467 SF  
Suite 402 - 2,555 SF  
*\*Suite 400 & 402 are contiguous  
for a total of 10,022 SF*



**100 N 1ST STREET**  
Burbank, CA

**OFFICE SPACES**  
**FOR LEASE**



**100 N 1ST ST**  
BURBANK, CALIFORNIA

S SAN FERNANDO BLVD

ORANGE GROVE AVE

WOOD RANCH  
BBQ & GRILL

N 1ST ST

OLIVE AVE

# 100 N 1ST STREET Burbank, CA

# OFFICE SPACES FOR LEASE



For leasing information  
please contact:

**Todd Wuschig**

Principal

818.933.0301

twuschig@lee-re.com

DRE# 01367230

**Jennifer Donaldson**

Principal

818.933.0347

jdonaldson@lee-re.com

DRE# 01317737

Lee & Associates® - LA North/Ventura, Inc.  
A Member of the Lee & Associates® Group of Companies • Corporate ID #01191898  
15250 Ventura Blvd., Suite 100 • Sherman Oaks, CA 91403 • P:818.986.9800  
F:818.783.9260 • www.lee-associates.com



No warranty or representation is made to the accuracy of the foregoing information. Terms of sale or lease and availability are subject to change or withdrawal without notice.