

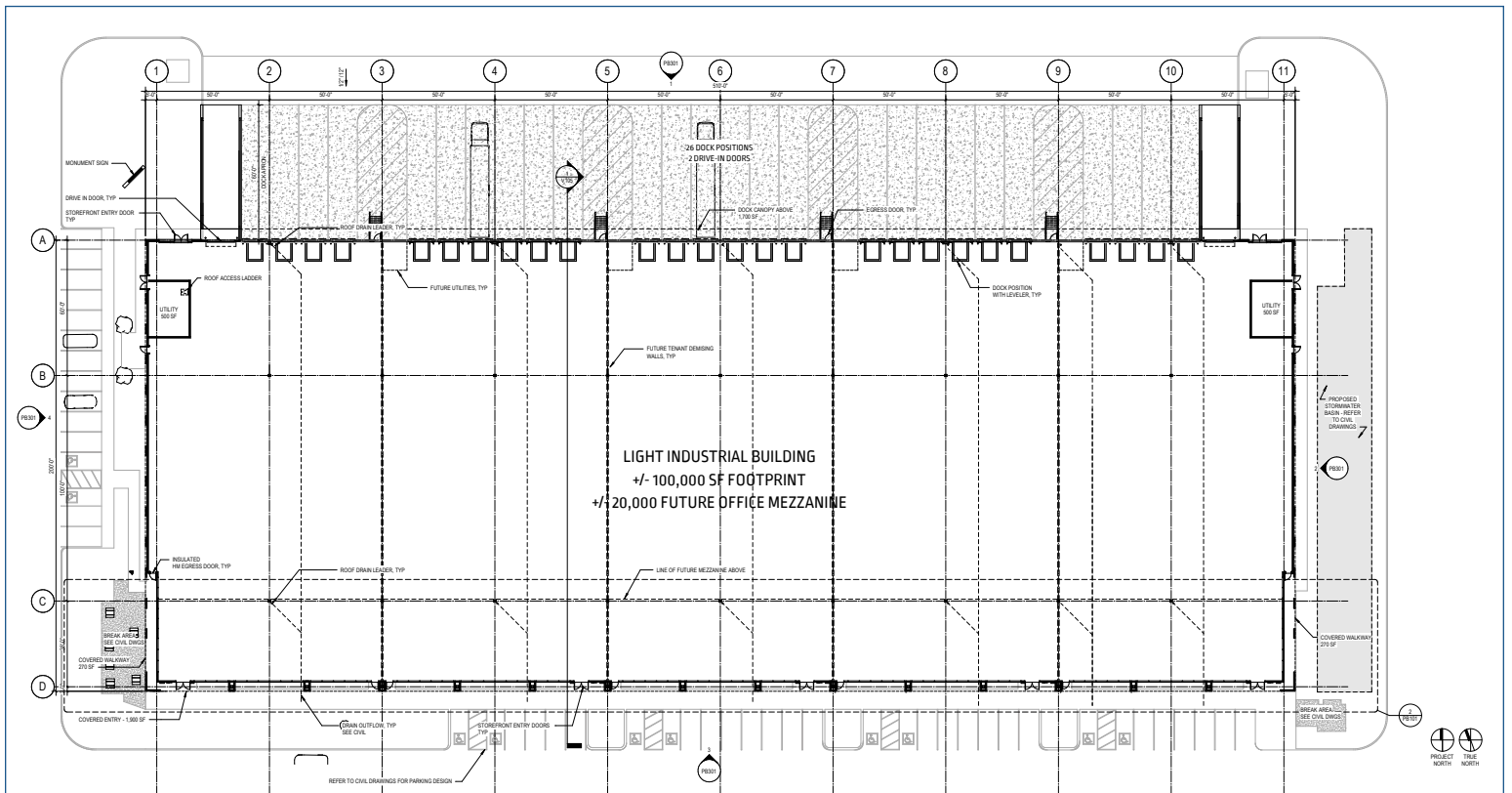
FOR LEASE: 100,000 SF LIGHT INDUSTRIAL SPACE
AVAILABLE IN NEW DEVELOPMENT

80 ARENA DRIVE

East Hanover, New Jersey



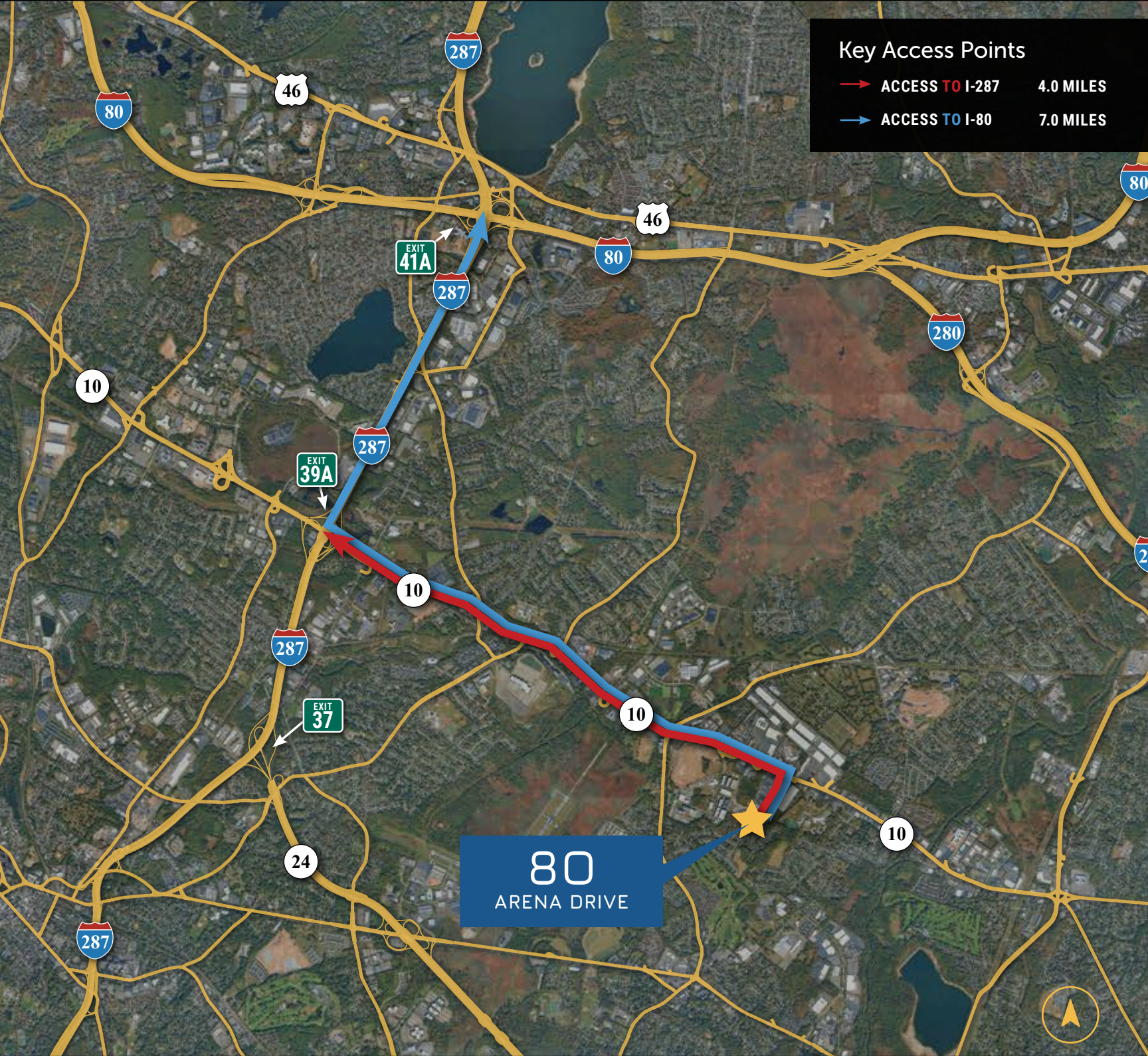
Proposed Site Plan



BUILDING SPECIFICATIONS

TOTAL SQUARE FOOTAGE	100,000 SF
SITE	X.X acres
OFFICE	20,000 SF Second Floor Mezzanine Office
DOCKS	XX
CEILING CLEAR HEIGHT	XX'
CAR PARKING	XX parking spaces
SPRINKLER	XX
ELECTRIC	XX
BUILDING TYPE	XX





Key Access Points

- ACCESS TO I-287 4.0 MILES
- ACCESS TO I-80 7.0 MILES

80
ARENA DRIVE

Exclusive Marketing Agent

Michael Schipper, SIOR
973-936-4173
michael.schipper@nmrk.com

Rob Loderstedt
973-998-1093
robert.loderstedt@nmrk.com

Kyle Eaton, SIOR
908-902-8354
kyle.eaton@nmrk.com

James Leonard
917-280-4890
james.leonard@nmrk.com

Haylee McCabe
609-276-5034
haylee.mccabe@nmrk.com

One Tower Center Boulevard, Suite 1201, East Brunswick, NJ 08816 | t 732-867-9001

Newmark, Licensed Real Estate Broker. The information contained herein has been obtained from sources deemed reliable but has not been verified and no guarantee, warranty or representation, either express or implied, is made with respect to such information. Terms of sale or lease and availability are subject to change or withdrawal without notice.