

FOR LEASE **Santa Rosa**

Fountaingrove Center



Elevating Work at the Gateway to Fountaingrove.



FOR LEASE **Santa Rosa** Fountaingrove Center



Class A Offices in Santa Rosa's Prestigious Fountaingrove Submarket

Type:

Office

Address:

**3550 - 3558 Round Barn Blvd.
Santa Rosa, CA**

Range of Available SF:

1,612 - 6,165

of Floors:

**Three Buildings, Three-Stories Each
3 Stories**

DESCRIPTION

A three-building complex with each building featuring three stories of Class A office space for a combined total of 161,055 square feet and which collectively are known as Fountaingrove Center. They are situated overlooking Santa Rosa's prestigious Fountaingrove submarket with convenient access to Highway 101. The center offers ample free parking for employees and clients plus an automated card key system for safe after-hours access.

LOCATION

Fountaingrove Center is at 3550, 3554 and 3558 Round Barn Boulevard respectively and is just ten minutes from Sonoma County Airport. The center's close proximity to Highway 101 means tenants can enjoy the nearby Coddington Mall, Fountaingrove Golf and Athletic Club, Wells Fargo Center for the Arts as well as a wide selection of retail, restaurants and other services.

AMENITIES

The on-site Fountaingrove Deli provides a quick, tasty and healthy menu. An on-site fitness center with showers make lunchtime workouts easy and efficient. The on-site Conference Center provides accommodation and convenience. Spectacular wine country views from the expansive floor-to-ceiling glassline provide an unbeatable work environment. The property is locally owned with on-site property management.

KEY TENANTS

Kaiser ACS Clinic	Kaiser Health Connect
Kaiser Home Health	Kaiser Foundation Hospitals
Stifel, Nicolaus & Co.	Raymond James Financial
Umpqua (formerly Sterling Savings)	Wells Fargo Bank



EXCLUSIVELY MARKETING BY:

Shawn Johnson
DRE#: 00835502

Dave Peterson
DRE#: 01280039

Brian Keegan
DRE#: 01809537

FOR LEASE **Santa Rosa**
Fountaingrove Executive Center



EXCLUSIVELY MARKETING BY:
Shawn Johnson
707.528.1400 ext. 238

Dave Peterson
707.528.1400 ext. 210

Brian Keegan
707.528.1400 ext. 249

FOR LEASE Santa Rosa Fountaingrove Executive Center

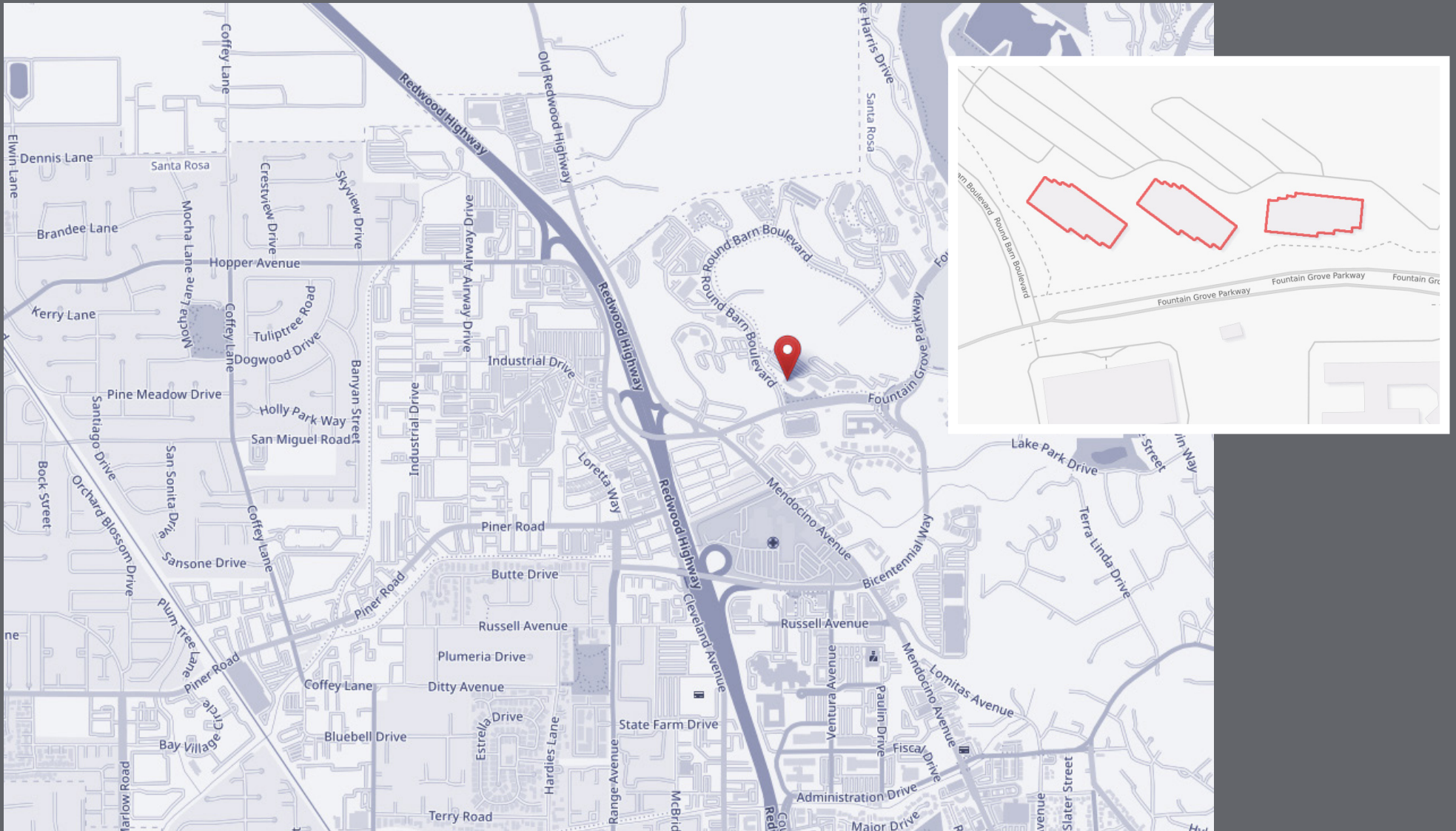


EXCLUSIVELY MARKETING BY:
Shawn Johnson
707.528.1400 ext. 238

Dave Peterson
707.528.1400 ext. 210

Brian Keegan
707.528.1400 ext. 249

FOR LEASE Santa Rosa Fountaingrove Center



EXCLUSIVELY MARKETING BY:

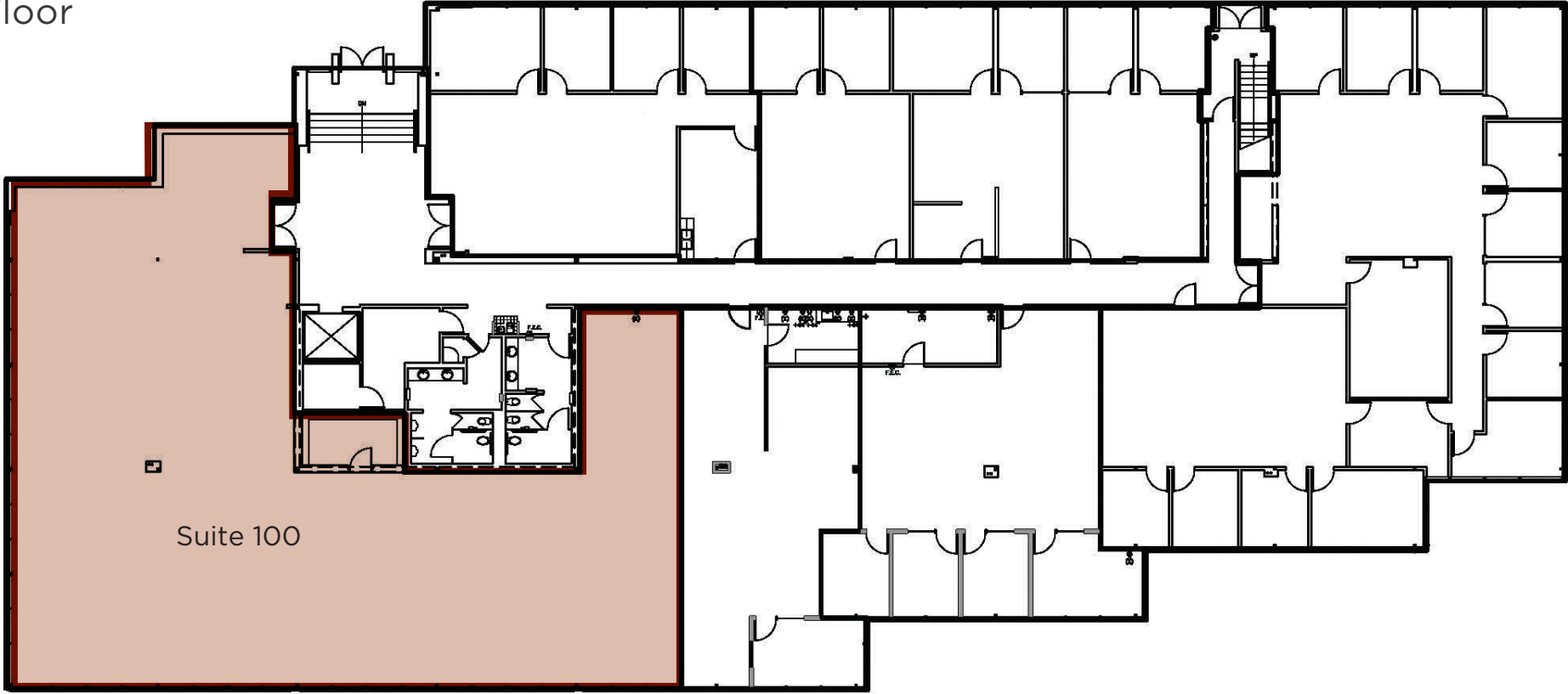
Shawn Johnson
707.528.1400 ext. 238

Dave Peterson
707.528.1400 ext. 210

Brian Keegan
707.528.1400 ext. 249

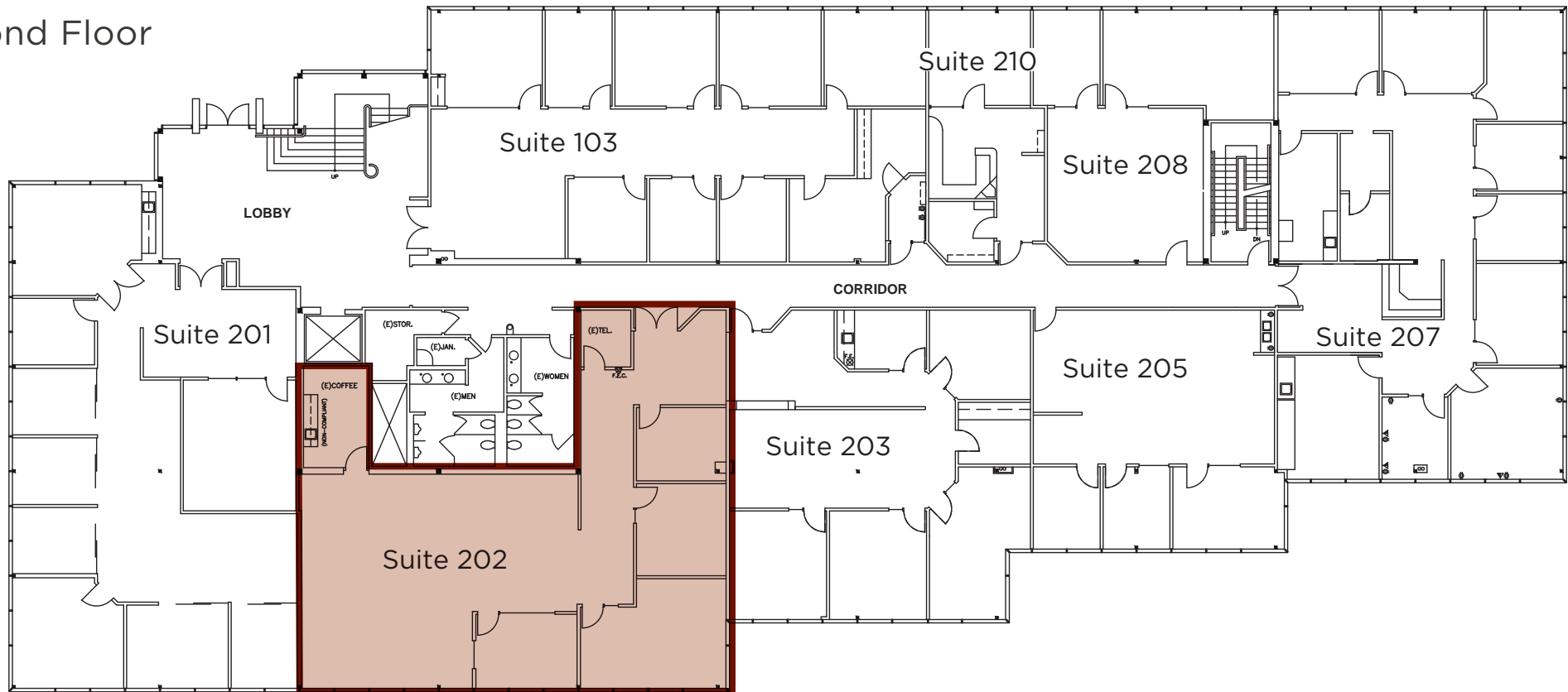
Suite 100: 6,165+/- RSF

3550 Round Barn Blvd.
First Floor



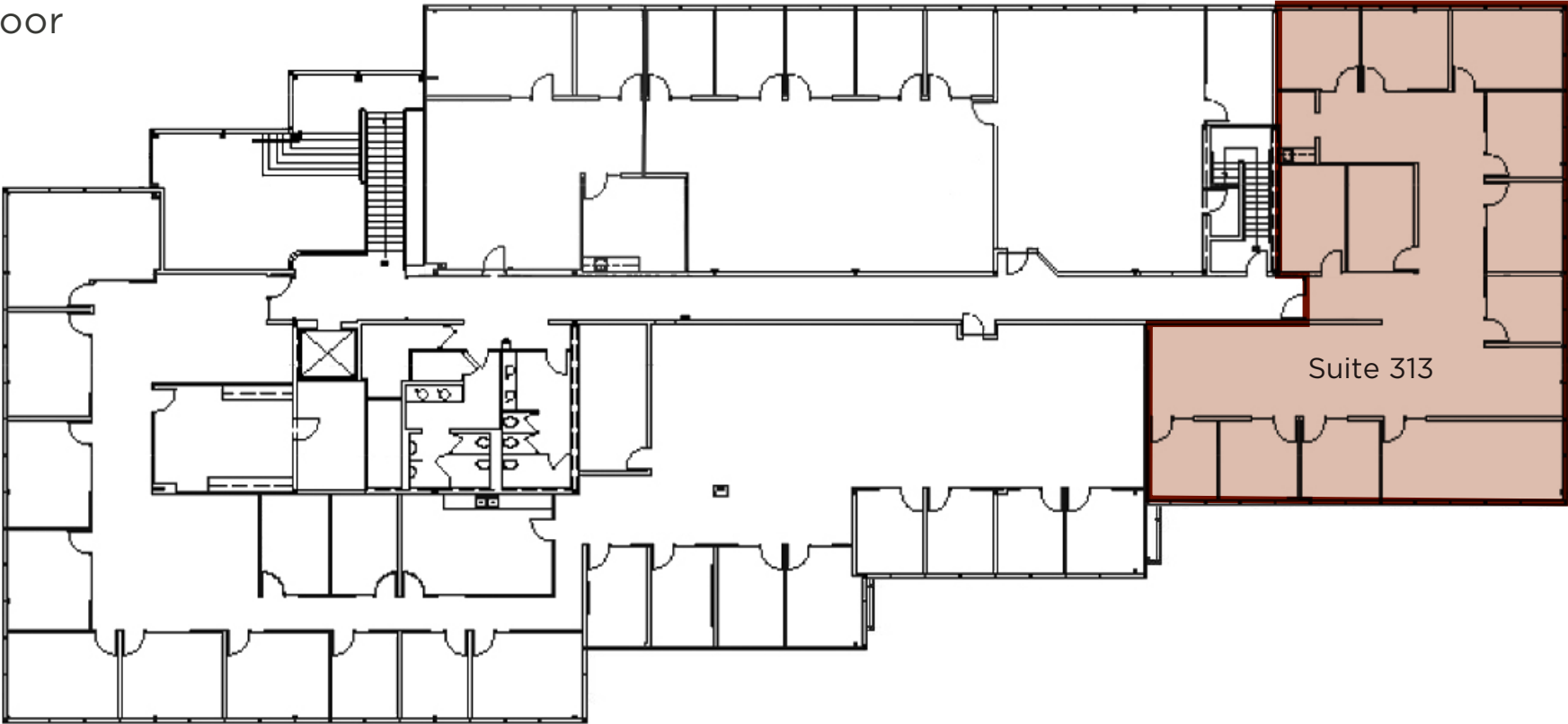
Suite 202: 2,965+/- RSF

3550 Round Barn Blvd.
Second Floor



Suite 313: 3,805+/- RSF

3550 Round Barn Blvd.
Third Floor

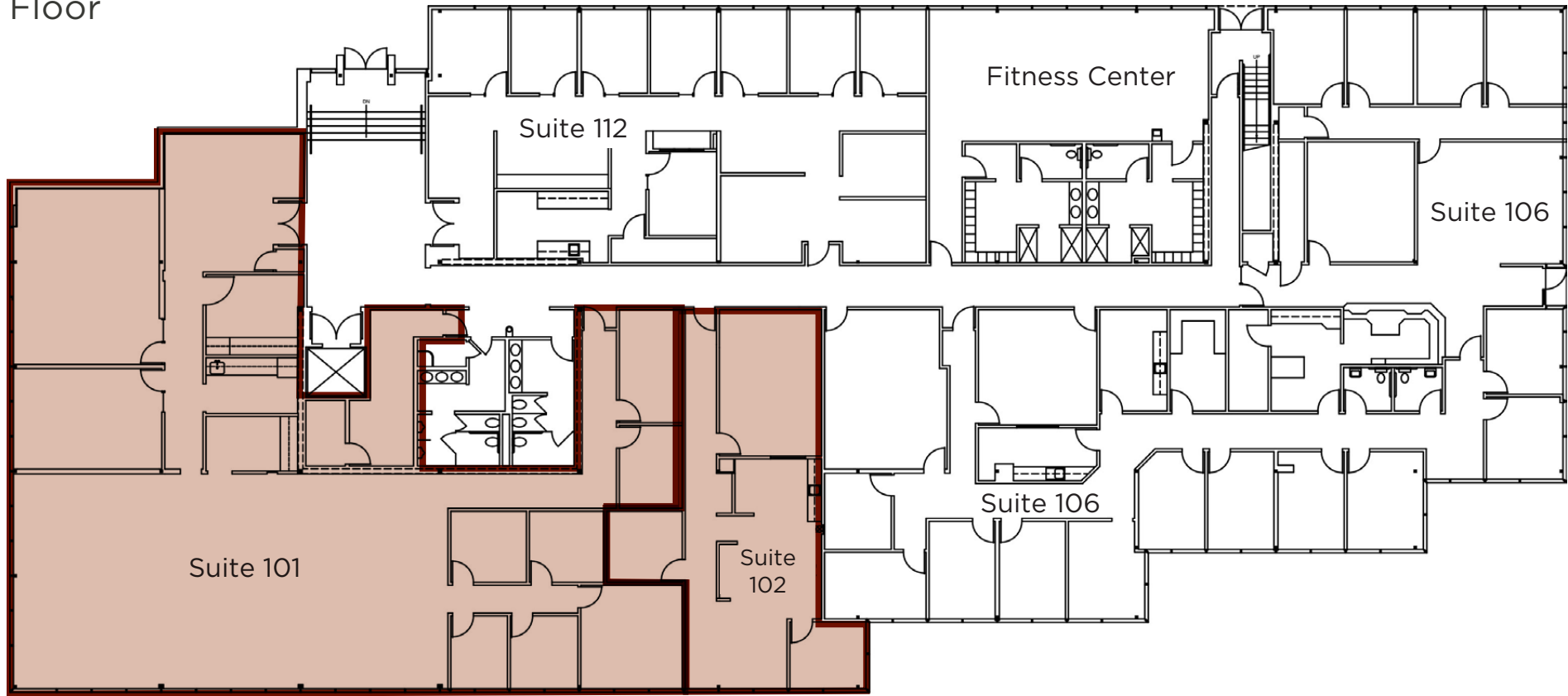


FOR LEASE **Santa Rosa**
Fountaingrove Center



Suite 101: 5,716 RSF
Suite 102: 1,612 RSF

3558 Round Barn Blvd.
First Floor



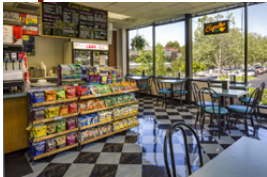
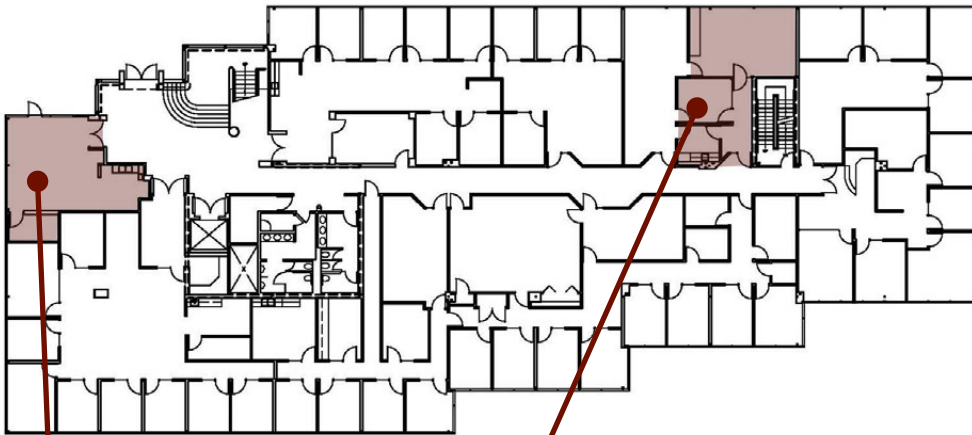
EXCLUSIVELY MARKETING BY:

Shawn Johnson
707.528.1400 ext. 238

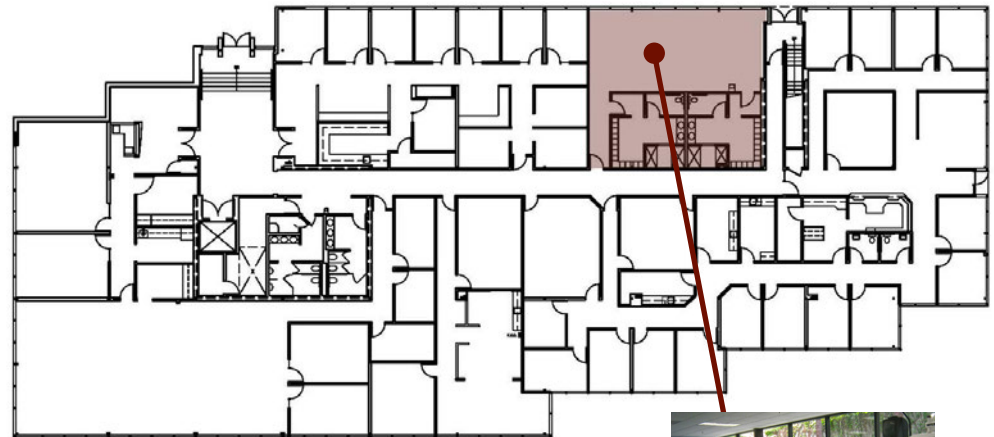
Dave Peterson
707.528.1400 ext. 210

Brian Keegan
707.528.1400 ext. 249

On-Site Amenities



Deli & Conference Center
3554 Round Barn Blvd. 2nd Floor



Fitness Center with showers
3558 Round Barn Blvd. 1st Floor