



Professional Plaza

81 Northfield Ave, West Orange, NJ 07052



TFE Properties
399 Monmouth St, East Windsor, NJ 08520
info@tfeproperties.com

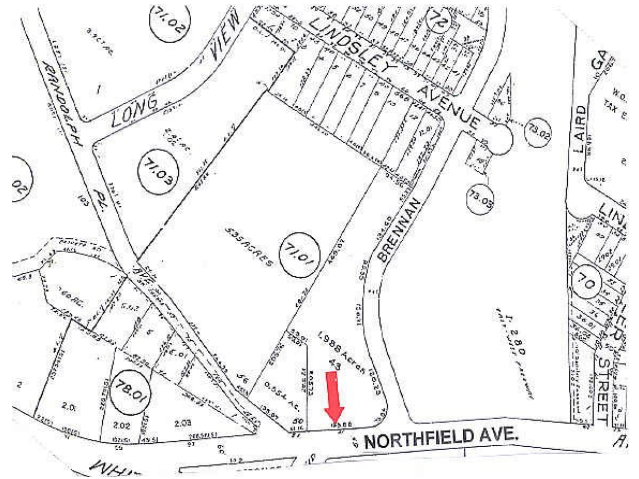
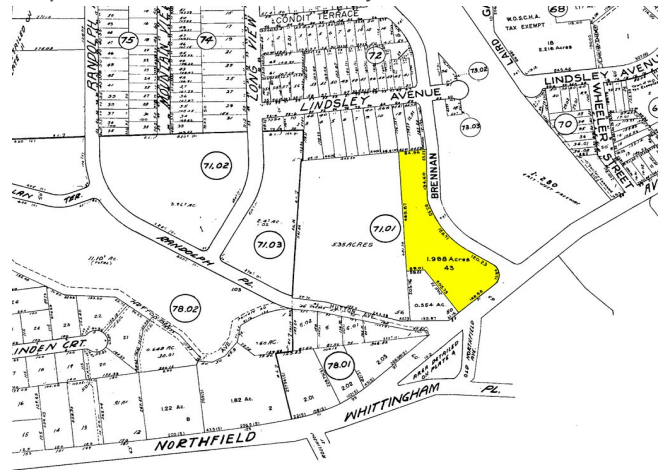
(609) 944-4050



Professional Plaza

\$20.00 - \$23.50 /SF/Yr

- Air Conditioning
- Central Heating
- Spaces Available Immediately



Rental Rate:	\$20.00 - \$23.50 /SF/Yr
Property Type:	Office
Property Subtype:	Medical
Building Class:	B
Rentable Building Area:	21,000 SF
Year Built:	1984
Walk Score ®:	80 (Very Walkable)
Rental Rate Mo:	\$1.67 USD/SF/Mo

1st Floor Ste 101

Space Available	1,788 SF
Rental Rate	\$20.00 /SF/Yr
Date Available	Now
Service Type	Plus Electric
Built Out As	Standard Medical
Space Type	Relet
Space Use	Office/Medical
Lease Term	Negotiable

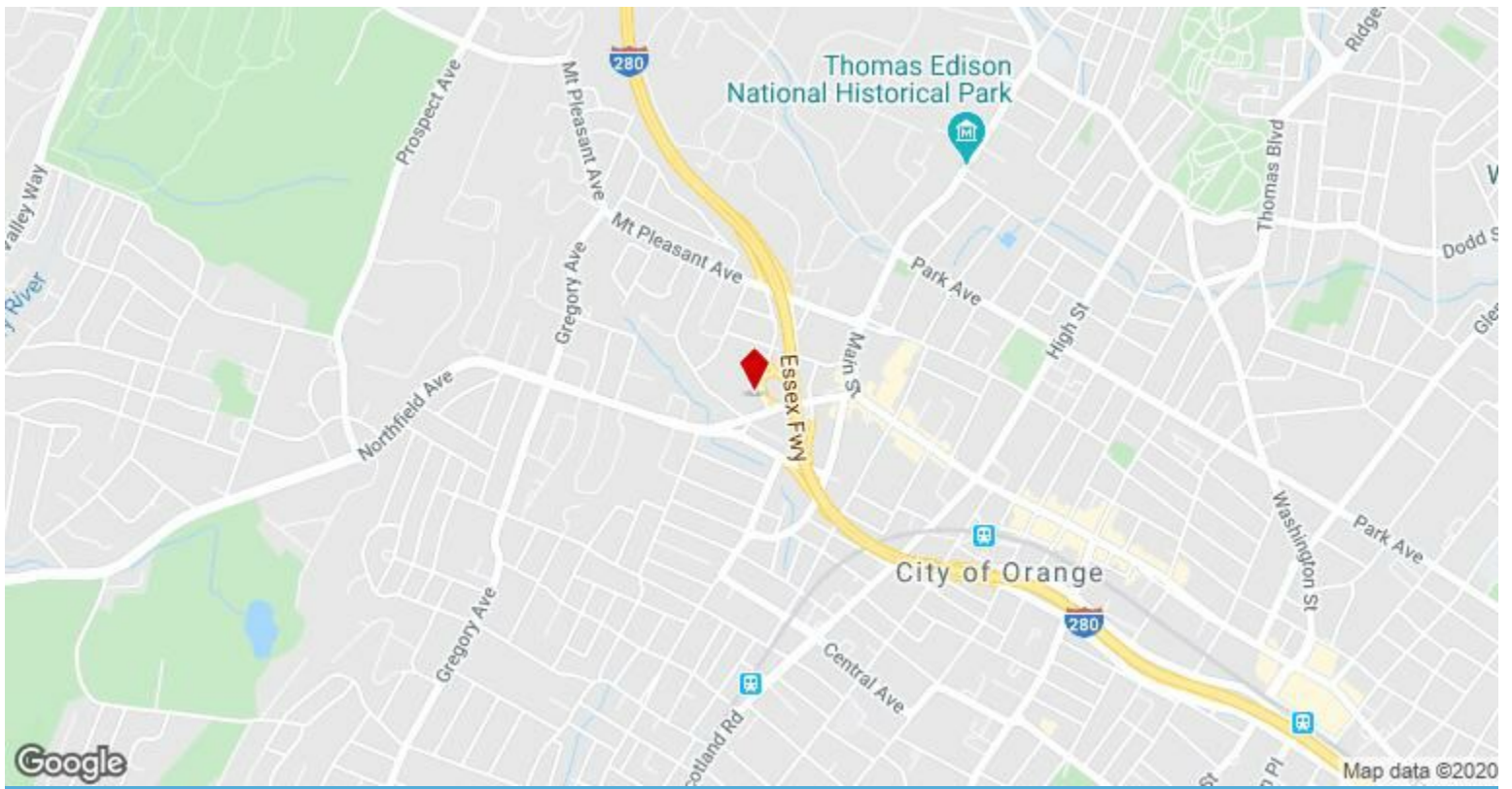
1

2nd Floor Ste 202

Space Available	847 SF
Rental Rate	\$23.50 /SF/Yr
Date Available	Now
Service Type	TBD
Space Type	Relet
Space Use	Office
Lease Term	Negotiable

Ground Floor.

2



81 Northfield Ave, West Orange, NJ 07052

Property Photos



Building Photo



Building Photo

Property Photos



Building Photo



Building Photo