



FOR LEASE

LARWIN SQUARE SHOPPING CENTER

275 CENTENNIAL WAY | TUSTIN, CA

CONTACT

JAKE FISCHBECK

SENIOR ASSOCIATE

LICENSE ID# 02090693

949.790.3118

JFISCHBECK@LEEIRVINE.COM

PROPERTY FEATURES

- HIGH IMAGE, TWO-STORY OFFICE BUILDING
- LOCATED WITHIN A WELL MAINTAINED PROFESSIONAL RETAIL/OFFICE PROJECT
- EXTENSIVE GLASSLINE PROVIDING AN ABUNDANCE OF NATURAL LIGHT
- OUTDOOR SEATING AREA & COURTYARD
- PROFESSIONALLY MAINTAINED COURTYARD
- ABUNDANT FREE SURFACE PARKING
- IMMEDIATE ACCESS TO THE 5, 55, 261 & 405 FREEWAYS
- SURROUNDED BY AFFORDABLE RESIDENTIAL NEIGHBORHOODS AND COMMUNITIES
- INCLUDED IN THE LARWIN SQUARE SHOPPING CENTER WITH 99 RANCH MARKET, CRUNCH FITNESS, FEDEX OFFICE PRINT & BANK OF AMERICA

AVAILABILITY

SUITE	SQ FT	RATE	DESCRIPTION
107	490 SF	\$2.25 FSG	TWO (2) PRIVATE OFFICES FOR DESK/CUBICLES.
208B	545 SF	\$2.25 FSG	TWO (2) PRIVATE OFFICES AND RECEPTION ROOM.



COMMERCIAL REAL ESTATE SERVICES

FISCHBECK

JAKE FISCHBECK
SENIOR ASSOCIATE
LICENSE ID# 02090693

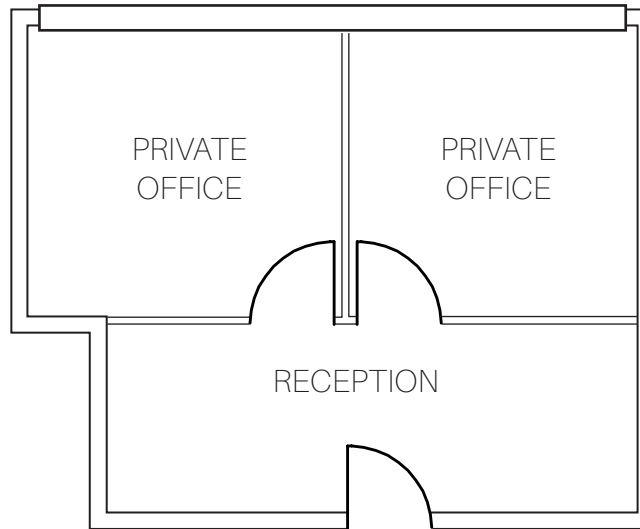
949.790.3118
JFISCHBECK@LEEIRVINE.COM



275
CENTENNIAL WAY

TUSTIN, CALIFORNIA

SUITE 107 - 490 SQ FT

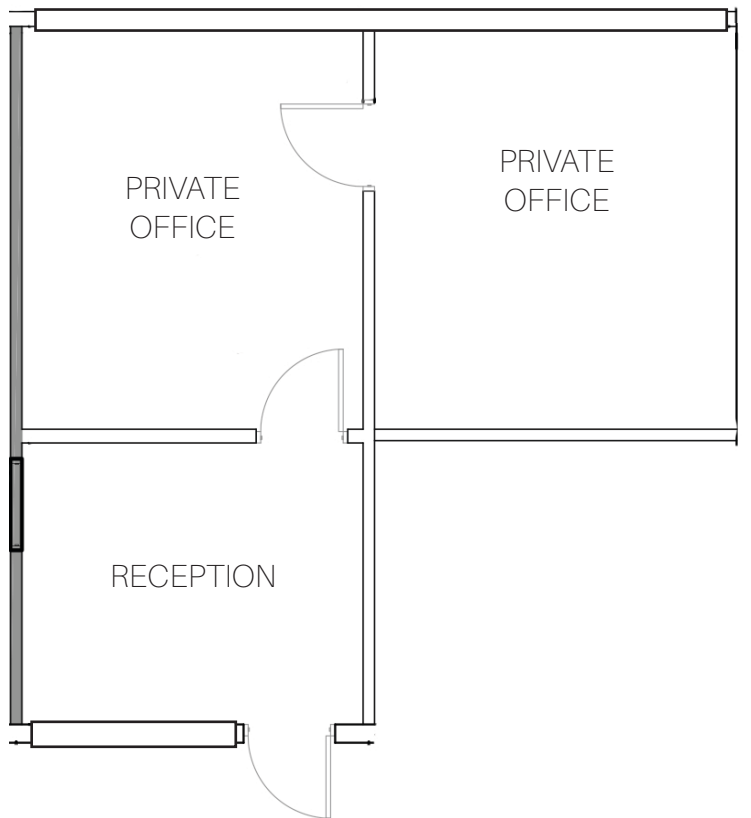




275
CENTENNIAL WAY

TUSTIN, CALIFORNIA

SUITE 208B - 545 SQ FT





275 CENTENNIAL WAY

TUSTIN, CALIFORNIA



COMMERCIAL REAL ESTATE SERVICES

FISCHBECK

JAKE FISCHBECK
SENIOR ASSOCIATE
LICENSE ID# 02090693

949.790.3118
JFISCHBECK@LEEIRVINE.COM