

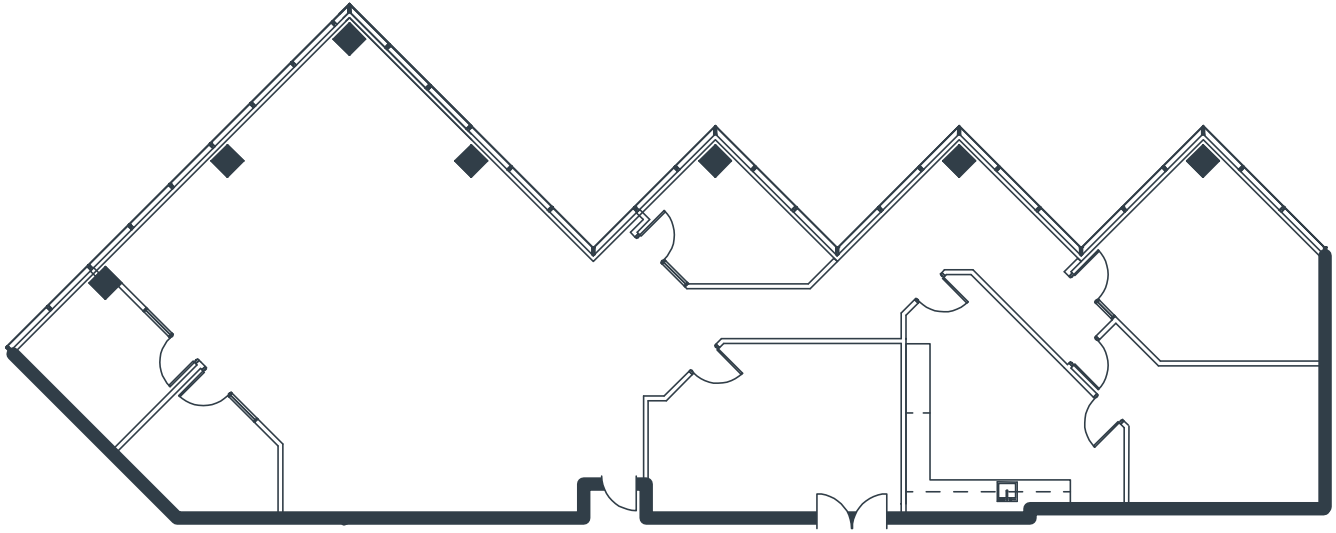
CENTURY CENTRE

2603 Main Street, Suite 1200
Irvine, CA

4,180 Square Feet

Call for Pricing

Full Service Gross



NOTES

- Reception
- 3 Window Offices
- Interior Office
- Kitchen
- Large Open Work Area
- Part of a Professionally Managed Business Park

Created by Olen Commercial Realty Corp., 2022.
Information is not to be published or copied without
written approval. Square footage and floor plans are
estimates and should be separately verified. All rates,
terms, floor plans, and building facts are subject to
change without notice.

ea 04.30.2025

MARIA MEYER

Senior Leasing Director

949.719.7215

mmeyer@olen.com



Seven Corporate Plaza

Newport Beach, CA

949.644.6536

www.olen.com