

FOR LEASE | OFFICE

# CARLSBAD CORPORATE CENTER

5860 EL CAMINO REAL  
CARLSBAD, CA 92008

LEASING INCENTIVE:  
Space comes with two  
memberships to  
the exclusive

**BERMUDA Club**\*



**CBRE**

# OFFICE PROPERTY FEATURES



Building / Suite	Total SF Available
5860 Suite 100:	4,384
5860 Suite 200:	15,319



Premier Carlsbad Business Environment



Abundant Parking  
Office Building: 4.0/1,000



Internet: Fiber Connectivity Available



Close to retail amenities



New rooftop solar



# OFFICE AVAILABILITY

SUITE	AVAILABLE SF	LEASE RATE	AVAILABILITY	NOTES
5860 - 100	4,384	\$1.90/SF + U&J	Now	Contact broker to tour
5860 - 200*	15,319	\$1.90/SF + U&J	Now	Contact broker to tour

\* Space comes with two memberships to the exclusive **BERMUDA Club!**



**COMMON AREA *Green Initiatives***

LED LIGHTING UPGRADES



DROUGHT-TOLERANT PLANTS



SMART WATER VALVES



LOWER MONTHLY OPERATIONAL COSTS • POSITIVE ENVIRONMENTAL IMPACT

Bermuda Club is a private 200-member co-work, social, wellness and indoor golf club, all under one roof. We are about community, personal and professional development, new experiences, and finding balance in your busy life. Work Well. Play Well. Be Well.

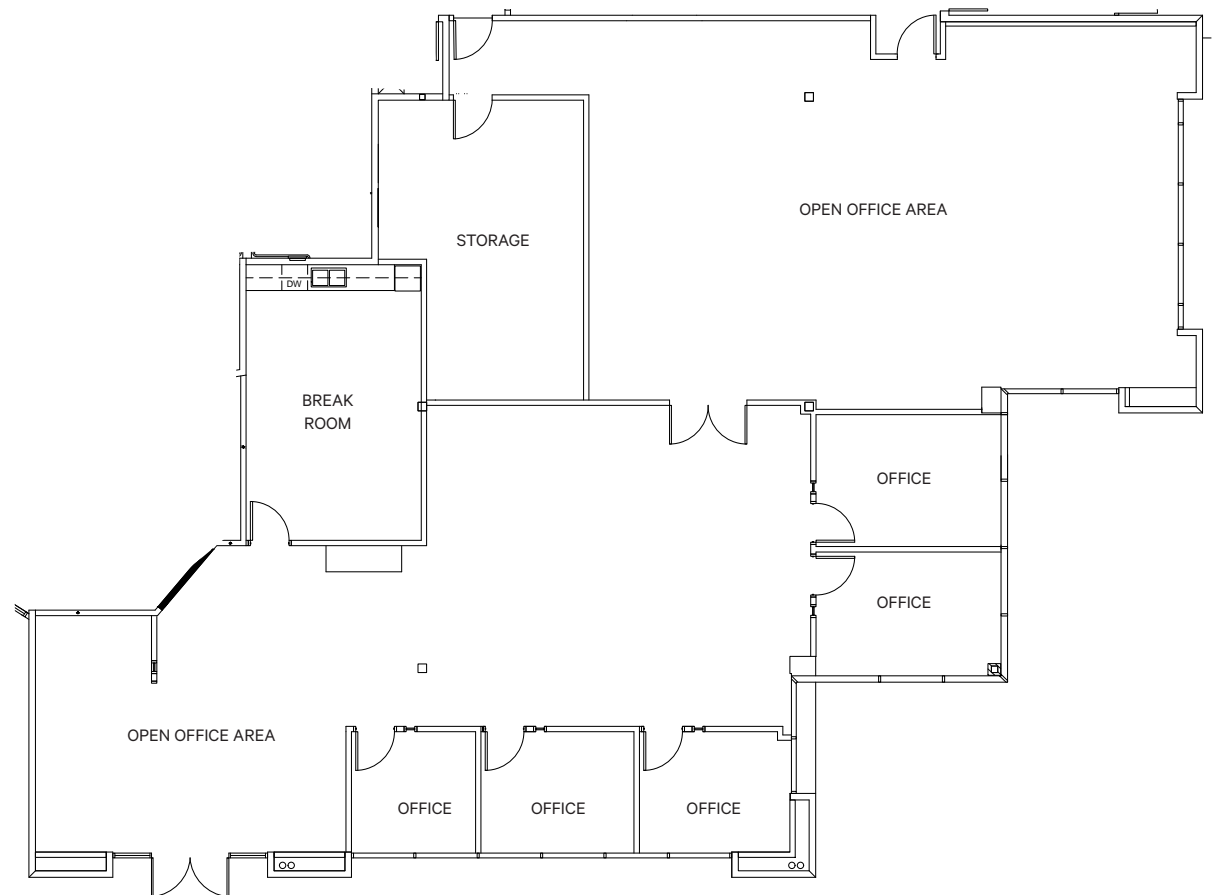
Located at 5840 El Camino Real, Suite 106  
 Carlsbad, CA | [bermudaclubs.com](http://bermudaclubs.com)

# FLOOR PLAN (AS-IS)

5860  
SUITE 100

## FEATURES

- Suite 100: 4,384SF
- Abundant window line / natural light
- 4.0/1,000 parking
- Outdoor amenity area
- Lease Rate: \$1.90/SF + U&J

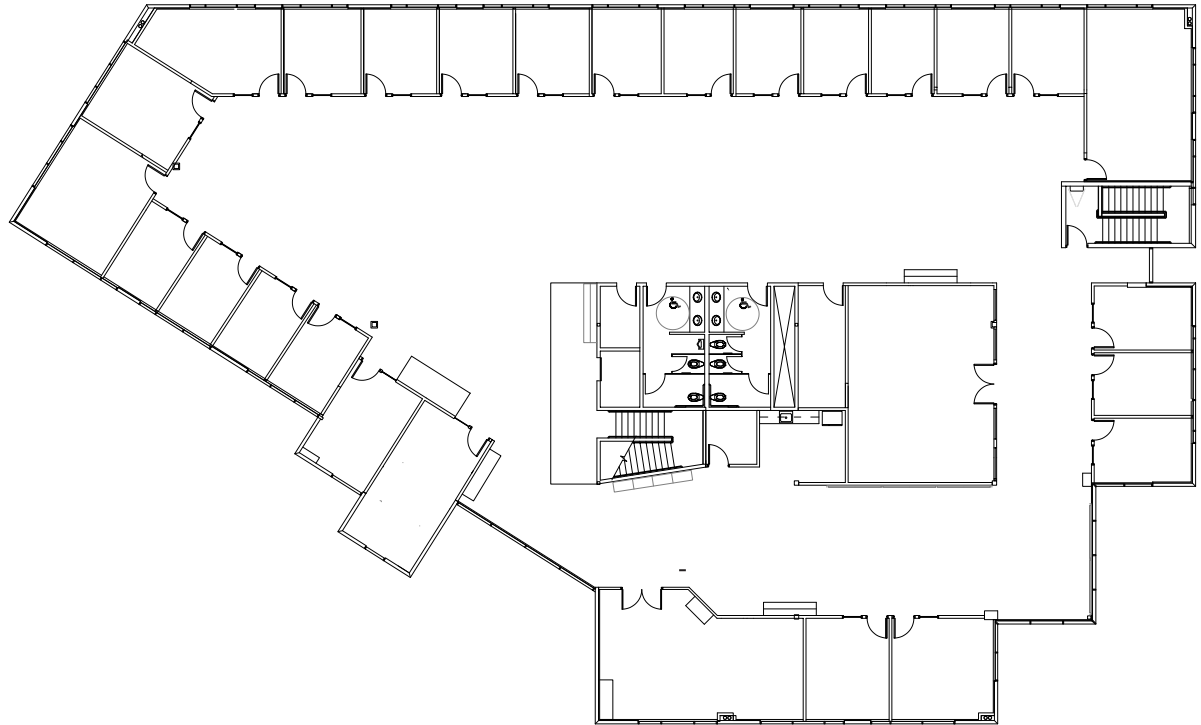


# FLOOR PLAN (AS-IS)

5860  
SUITE 200

## FEATURES

- Suite 200: 15,319 SF
- Elevator served
- Abundant window line / natural light
- 4.0/1,000 parking
- Building signage available
- Outdoor amenity area
- Lease Rate: \$1.90/SF + U&J



# AERIAL OVERVIEW



CARLSBAD  
CORPORATE  
CENTER

# PROPERTY PHOTOS



# CARLSBAD CORPORATE CENTER

5860 EL CAMINO REAL  
CARLSBAD, CA 92008

## FOR OFFICE INQUIRIES CONTACT:

### **MATTY SUNDBERG**

Senior Vice President

Lic. 01257446

+1 760 438 8518

[matty.sundberg@cbre.com](mailto:matty.sundberg@cbre.com)

### **WESTON YAHN**

Vice President

Lic. 01975469

+1 760 438 8505

[weston.yahn@cbre.com](mailto:weston.yahn@cbre.com)

**CBRE**

© 2026 CBRE, Inc. All rights reserved. This information has been obtained from sources believed reliable, but has not been verified for accuracy or completeness. You should conduct a careful, independent investigation of the property and verify all information. Any reliance on this information is solely at your own risk. CBRE and the CBRE logo are service marks of CBRE, Inc. All other marks displayed on this document are the property of their respective owners, and the use of such logos does not imply any affiliation with or endorsement of CBRE. Photos herein are the property of their respective owners. Use of these images without the express written consent of the owner is prohibited.