

WILLIAMSBURG, BROOKLYN, NY

15 NORTH 15TH STREET

MOD



SPACE DETAILS

LOCATION

Between Kent Avenue and Wythe Avenue

SPACE

Space A - 2,100 SF

Space B - 1,600

Space C - 2,050

Space D - 2,850

TOTAL SPACE - 8,600 SF

FRONTAGE

110 Feet on North 15th Street

100 Feet on Gem Street

CEILING HEIGHT

13 Feet

POSSESSION

Arranged

ASKING RENT

\$85 PSF

NEIGHBORS

Vital Climbing Gym, Westlight, Brooklyn Bowl, Arlo Williamsburg, Rule of Thirds, The William Vale, Apple Williamsburg, Chase Bank

TRANSPORTATION



COMMENTS

- On the Williamsburg/Greenpoint Border
- Ideal for Restaurants, Nightlife and Entertainment
- TI Available for Qualified Tenants

CONTACTS

MEYER DAGMY

718-249-3613

m@modcre.com

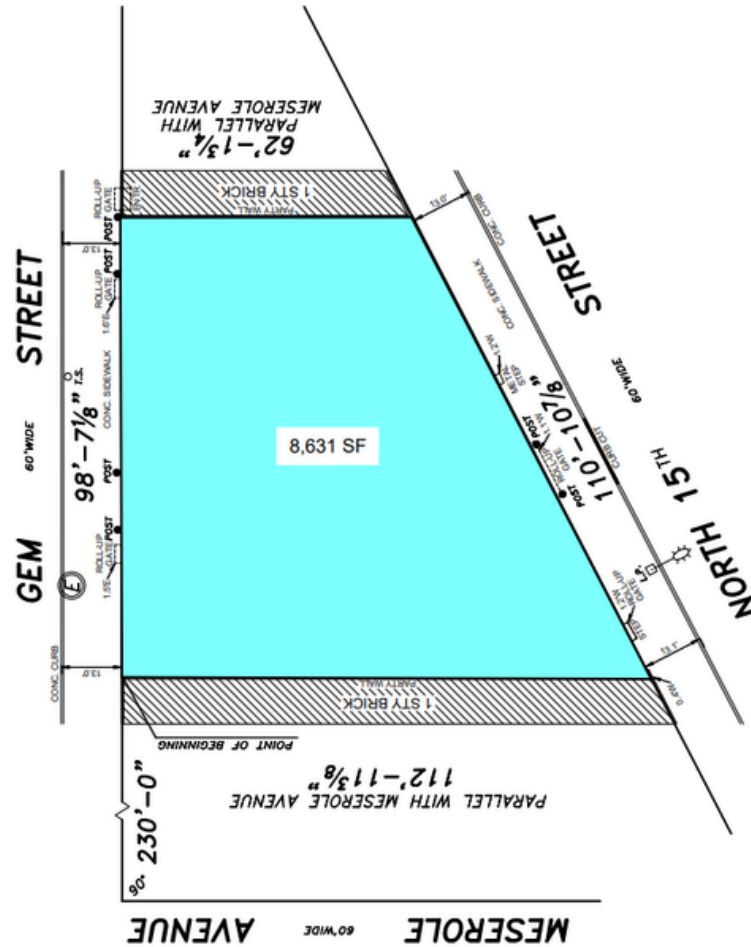
EDDIE MAMIYE

917-379-6719

e@modcre.com



FLOOR PLAN



CONTACTS

MEYER DAGMY

718-249-3613

m@modcre.com

EDDIE MAMIYE

917-379-6719

e@modcre.com



AREA MAP



CONTACTS

MEYER DAGMY

718-249-3613

m@modcre.com

EDDIE MAMIYE

917-379-6719

e@modcre.com





