



FOR LEASE 3,618 SF

# OAKLAND PARK

3601 NE 5<sup>th</sup> Avenue  
Oakland Park, FL 33334



# OAKLAND PARK

3601 NE 5<sup>th</sup> Avenue

## Property Features

**Space Available:** 3,618 SF

**Office Space:** ±300 SF

**Clear Height:** 18'

**Doors:** 1 Dock High Door and 1 Drive-In Ramp

**Loading Configuration:** Cross Dock

**Column Spacing:** 40 ft

**Truck Court:** Shared

**Restrooms:** 2

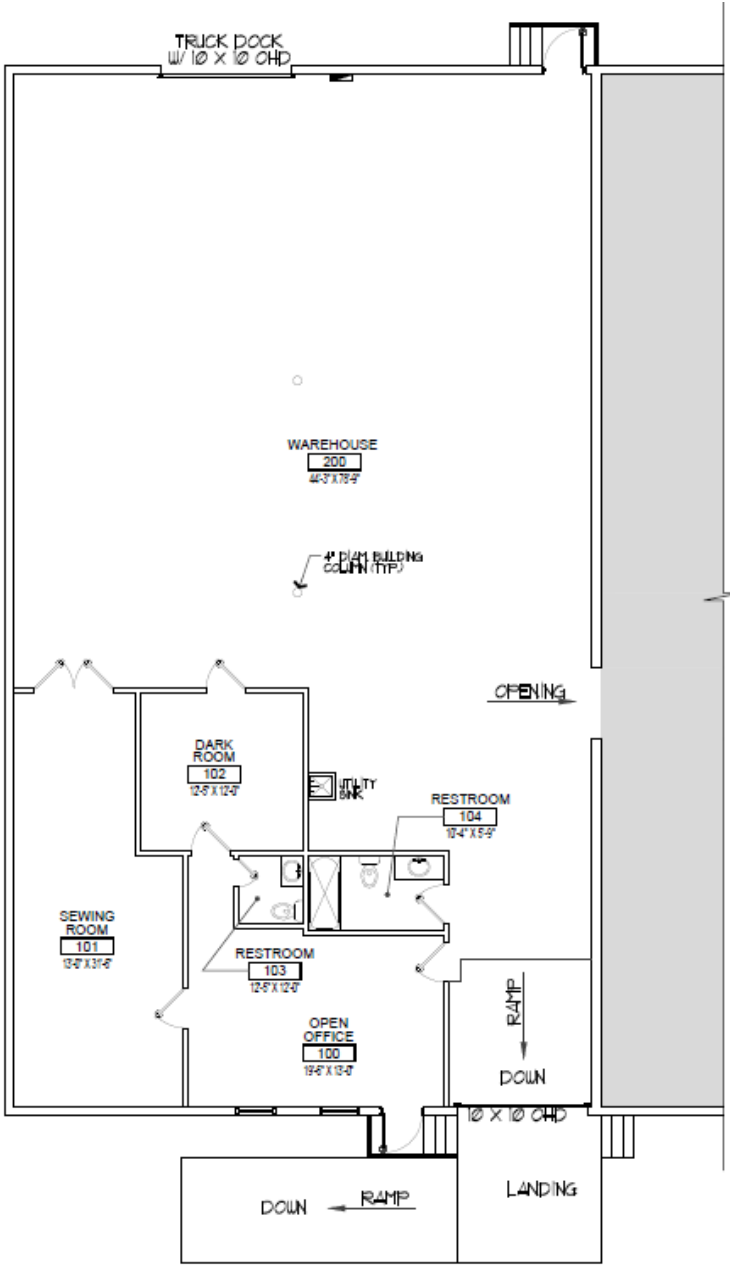
**Location:** Ideally situated with great proximity to I-95

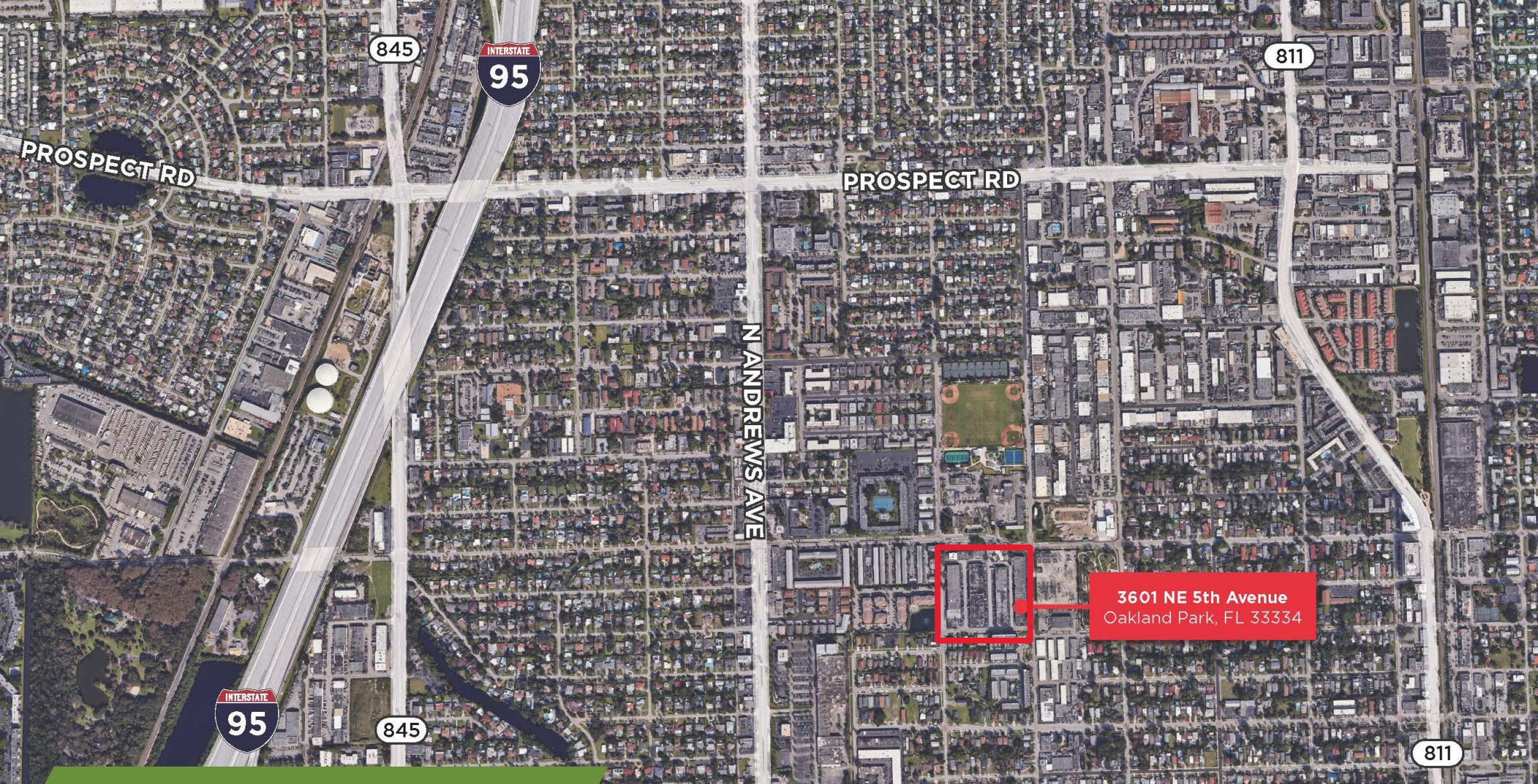


# OAKLAND PARK

3601 NE 5<sup>th</sup> Avenue

## FLOOR PLAN





**3601 NE 5th Avenue**  
Oakland Park, FL 33334

**FOR MORE INFORMATION, CONTACT:**

**MATTHEW G. MCALLISTER, SIOR**  
Executive Director  
+1 561 901 5216  
[Matthew.mcallister@cushwake.com](mailto:Matthew.mcallister@cushwake.com)

**ERIC CANTOR**  
Senior Associate  
+1 561 227 2068  
[Eric.cantor@cushwake.com](mailto:Eric.cantor@cushwake.com)

©2024 Cushman & Wakefield. All rights reserved. The information contained in this communication is strictly confidential. This information has been obtained from sources believed to be reliable but has not been verified. NO WARRANTY OR REPRESENTATION, EXPRESS OR IMPLIED, IS MADE AS TO THE CONDITION OF THE PROPERTY (OR PROPERTIES) REFERENCED HEREIN OR AS TO THE ACCURACY OR COMPLETENESS OF THE INFORMATION CONTAINED HEREIN, AND SAME IS SUBMITTED SUBJECT TO ERRORS, OMISSIONS, CHANGE OF PRICE, RENTAL OR OTHER CONDITIONS, WITHDRAWAL WITHOUT NOTICE, AND TO ANY SPECIAL LISTING CONDITIONS IMPOSED BY THE PROPERTY OWNER(S). ANY PROJECTIONS, OPINIONS OR ESTIMATES ARE SUBJECT TO UNCERTAINTY AND DO NOT SIGNIFY CURRENT OR FUTURE PROPERTY PERFORMANCE.

