

Available for Lease

Jefferson Professional Building 9 Lawn Avenue

West Norriton Twp., Jeffersonville, PA 19403



5,000 square feet of just renovated 2nd Floor Space

\$13.00 per sq. ft. / \$5,416.00 per month plus Utilities and Janitorial

Second Floor Private Elevator Served Commercial / Professional / Medical Space

First Floor – Suites E & F - 1,450 square feet

\$20.00 per sq. ft. / \$2,416 per month plus Utilities and Janitorial

NO CAM! (Common Area Maintenance Fees)

2nd fl. Features Large open area, 3 private offices, separate men's & women's bathrooms & breakroom

Access the space by the private elevator that opens directly into the office suite

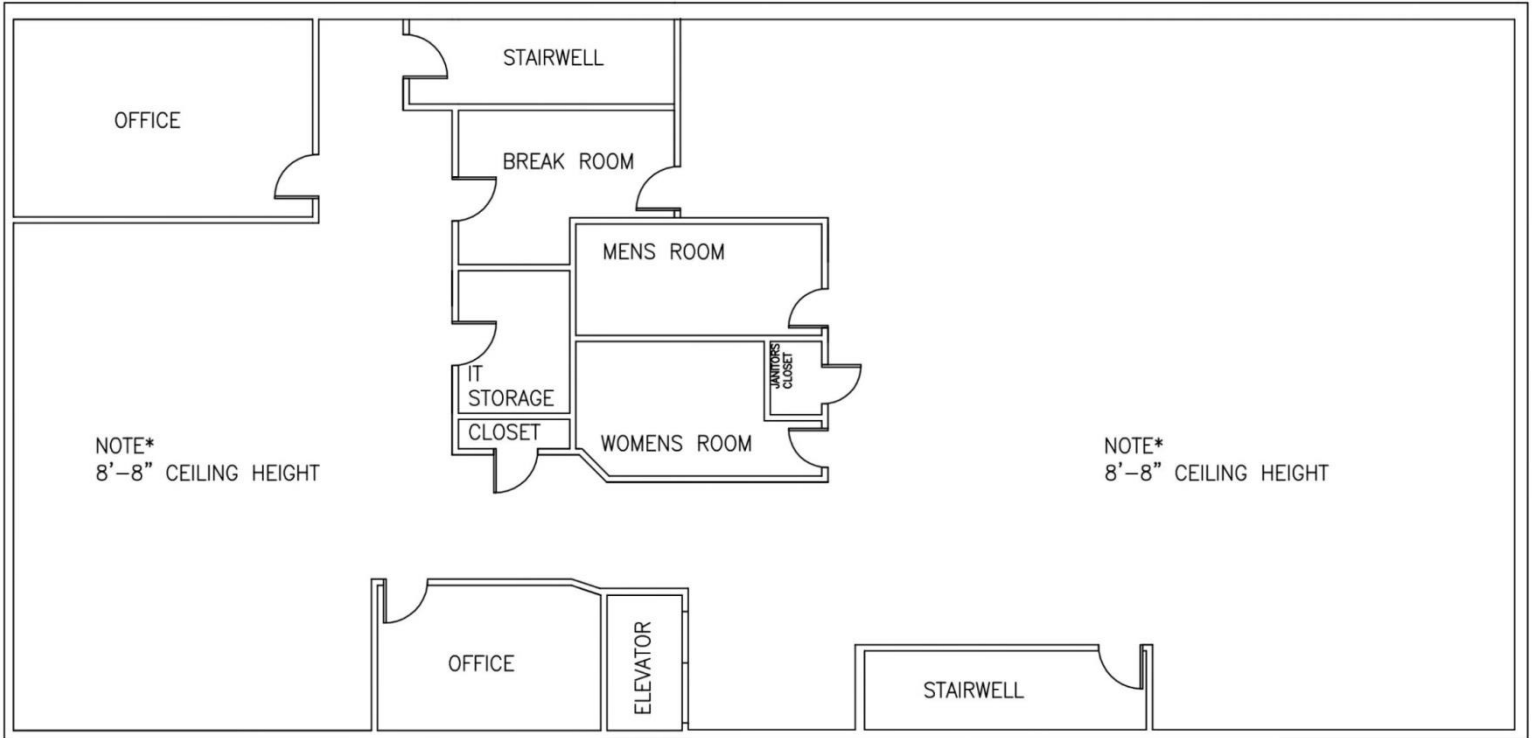
Signage available on Lawn Avenue & Main Street

Plenty of off-street parking, Brand new heating ventilating and central air conditioning system



10119 Valley Forge Circle
King of Prussia, PA 19406
Tel. 610-768-4000
Fax 610-768-4006
sbasile@jmbasile.com

JEFFERSON PROFESSIONAL BUILDING
9 LAWN AVENUE
JEFFERSONVILLE PA. 19403
2ND FLOOR



First Floor

