

Premier Signage  
Opportunity



**A Full Tenant  
Amenity Package.  
Delivered.**

**Leasing Opportunities:  
703.522.4600**

**Gary Cook**  
gcook@lpc.com  
703.284.3379

**Stoddie Nibley**  
snibley@lpc.com  
703.284.5884

**2611** SOUTH  
CLARK

NATIONAL LANDING

**Connect Here.**

**2611sclark.com**

**Lincoln**

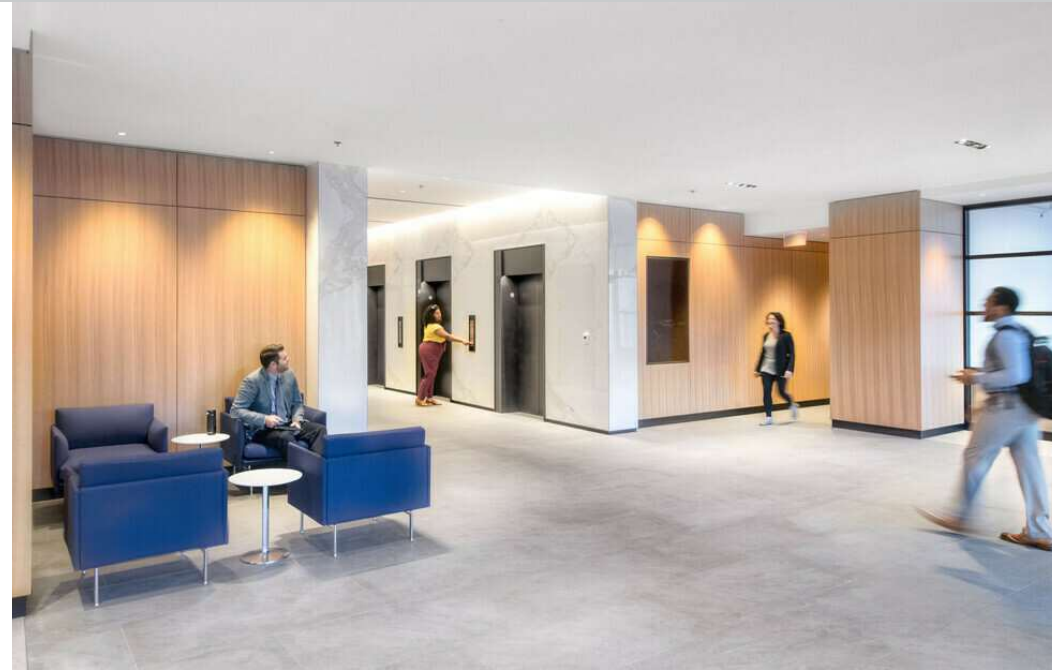
# 2611 SOUTH CLARK

## On-site Café Now Open

---

A place to meet up and refuel  
Coffee and other refreshments  
Indoor and outdoor seating  
Accessible from office lobby





## Property Highlights

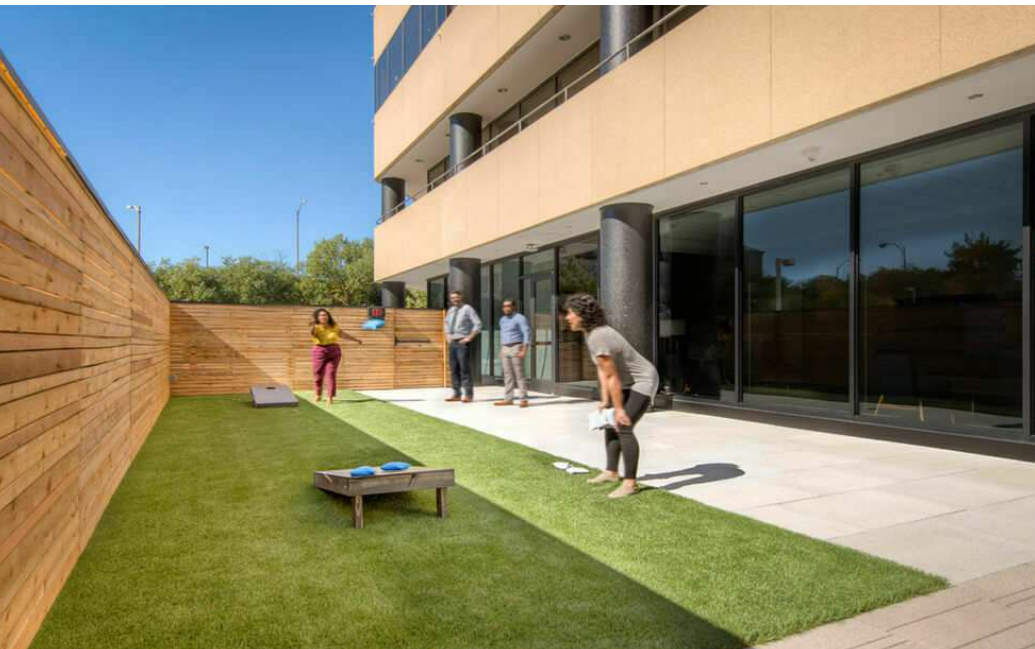
- Just delivered top to bottom renovations
- New conference facility
- New tenant lounge with coffee bar
- New large curated outdoor area including cornhole, bocce court, outdoor breakout space and zen garden
- Electric car parking
- Shuttles service to Metro + National Airport
- 12,000 SF campus fitness facility
- Free standing building with lots of natural light



# 2611 SOUTH CLARK

NATIONAL LANDING

Enhanced Tenant Experience



# 2611 SOUTH CLARK

NATIONAL LANDING

Move-in Ready Office Available



<b>Availabilities</b>	<b>SF</b>	<b>Date Available</b>
Retail 2	2,016 SF	Immediately
Suite 150	2,226 SF	Immediately
Suite 205	1,351 SF	Immediately
Suite 220	4,534 SF	Immediately
Suite 250	4,914 SF	Immediately
Spec Suite 340	2,627 SF	Immediately
Spec Suite 350	2,965 SF	Immediately
Spec Suite 440	2,500 SF	Immediately
Suite 500	19,218 SF	Immediately
Suite 750	9,362 SF	Immediately
Suite 800	19,218 SF	Immediately
Suite 950	7,640 SF	Immediately
Suite 1000	19,218 SF	Immediately
Suite 1100	19,218 SF	Immediately
Suite 1200	19,218 SF	Immediately

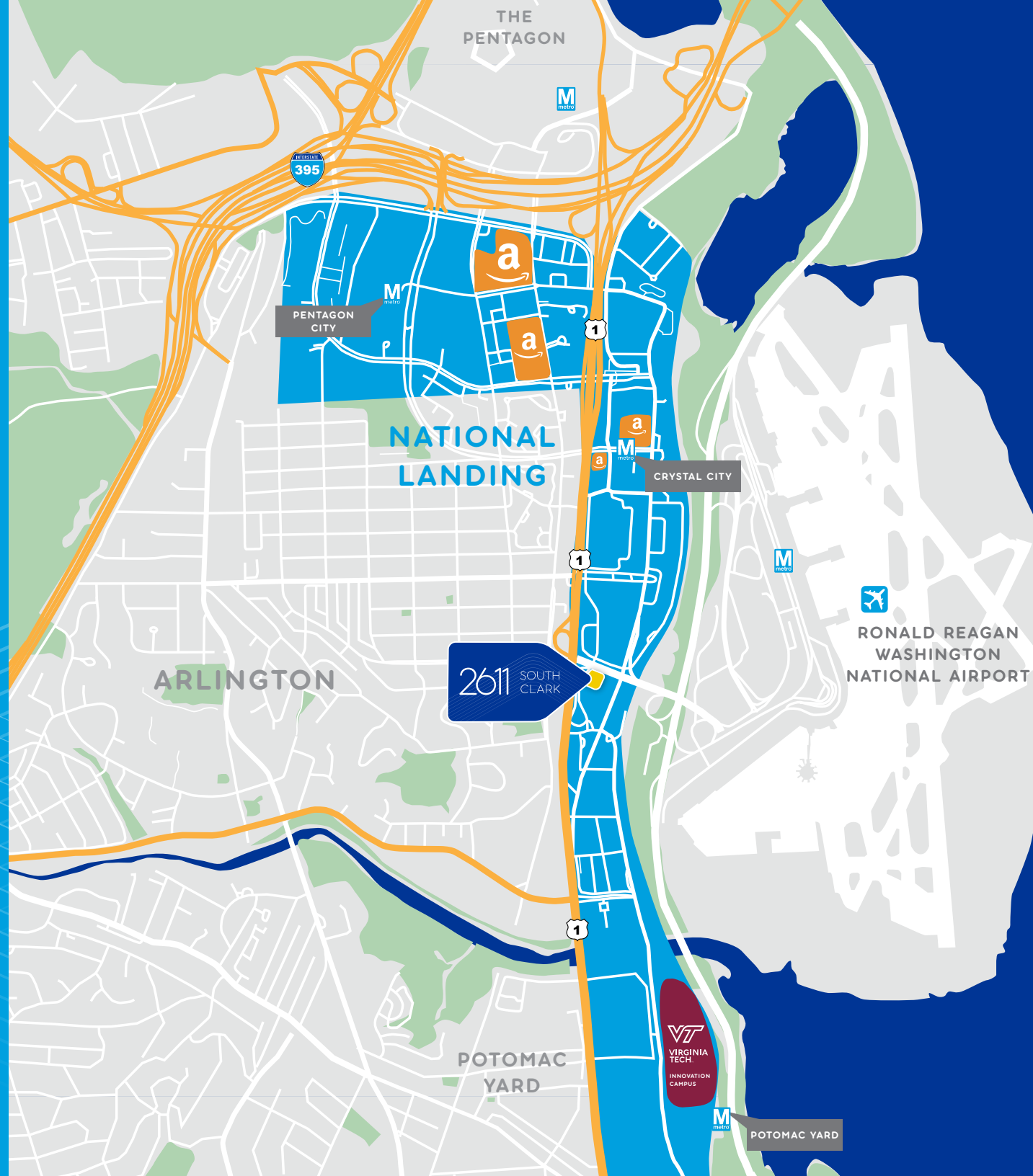
# 2611 SOUTH CLARK



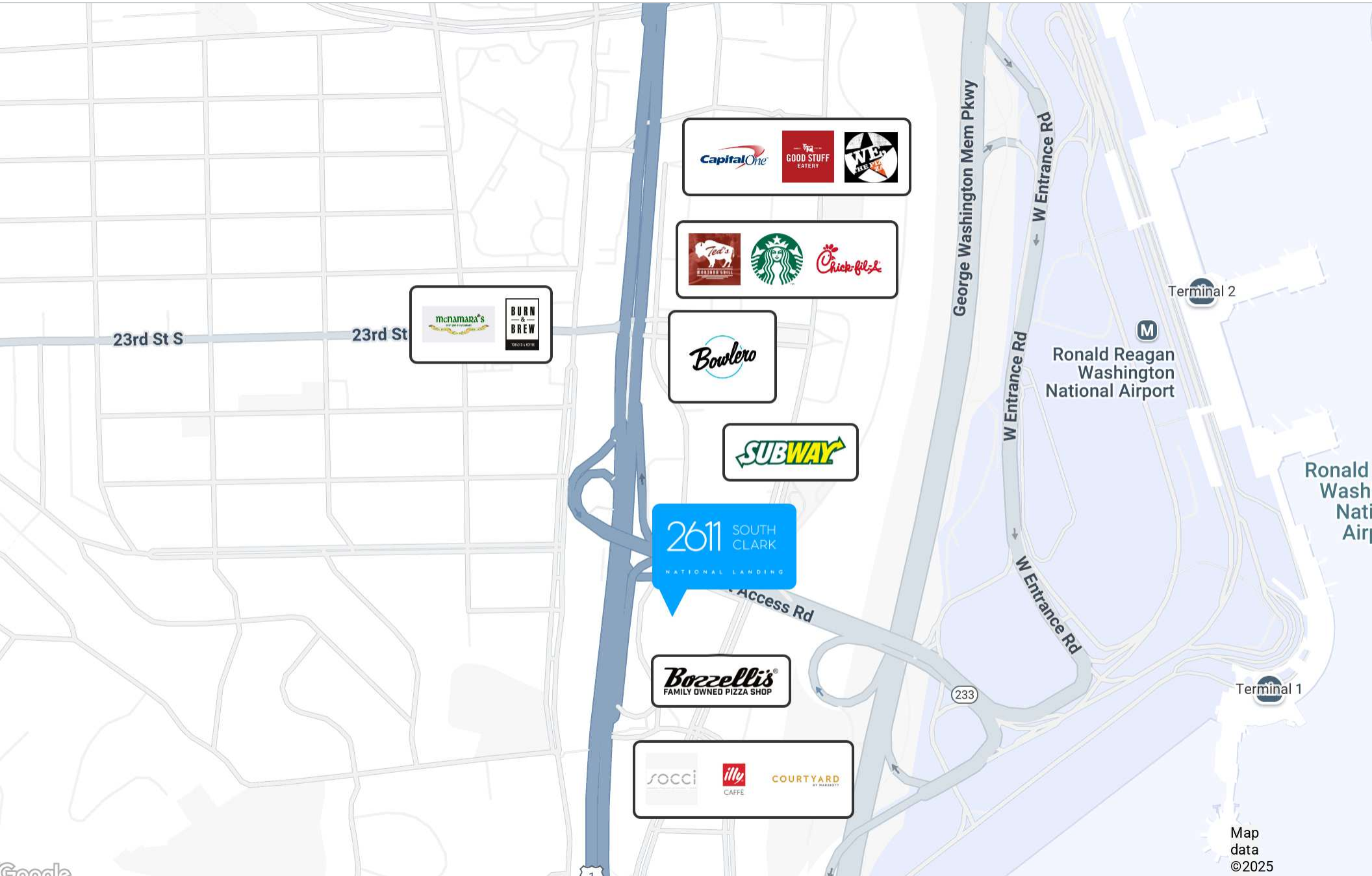
In the Heart of  
National Landing



And Steps Away From  
Reagan National Airport



NATIONAL LANDING



NATIONAL LANDING



**Suite**

**Size**

**Description**

Suite 150

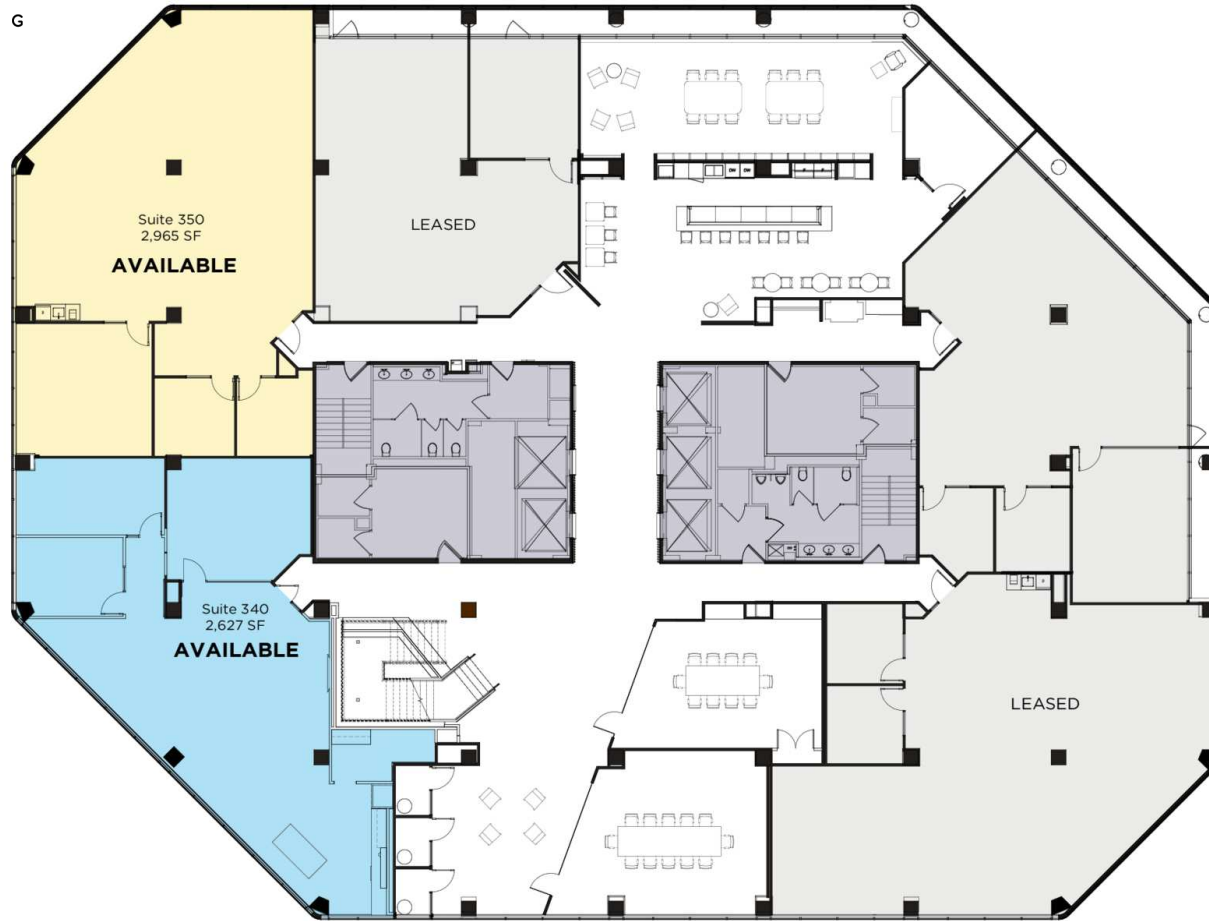
2,226 SF

Available Immediately



Suite	Size	Description
Suite 205	1,351 SF	Available Immediately
Suite 220	4,534 SF	Available Immediately
Suite 250	4,914 SF	Available Immediately

NATIONAL LANDING

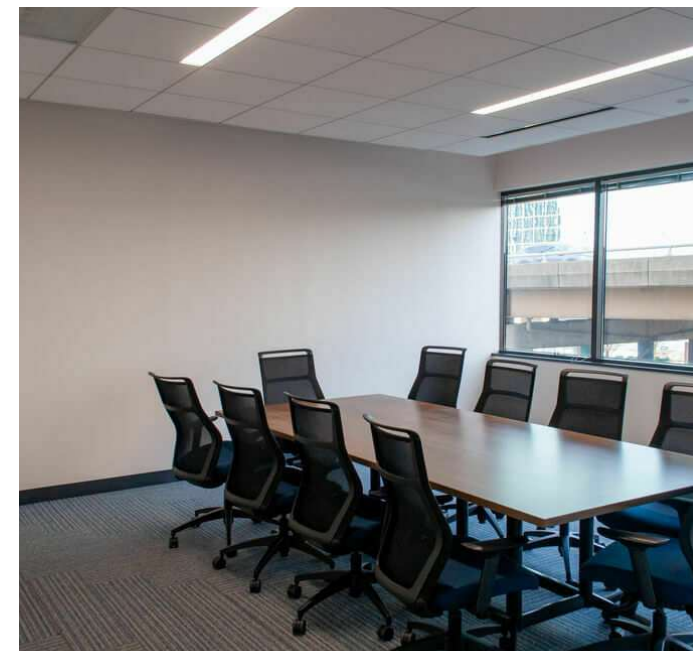
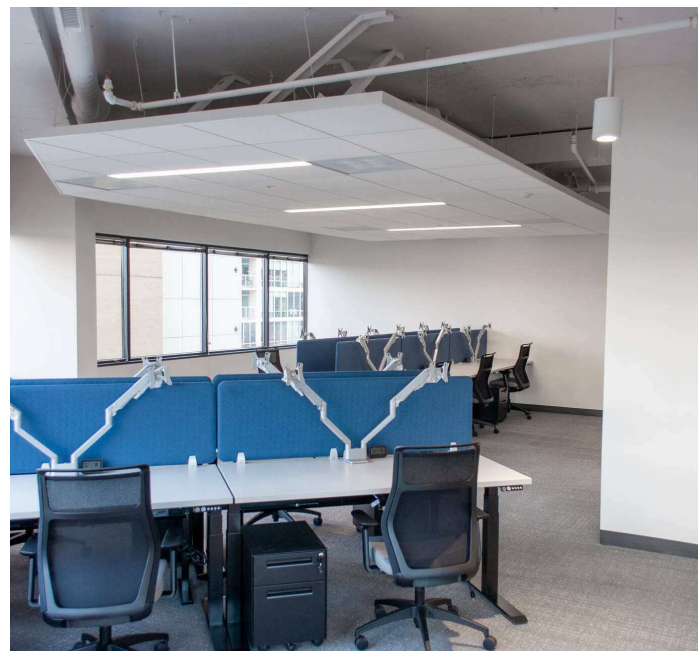
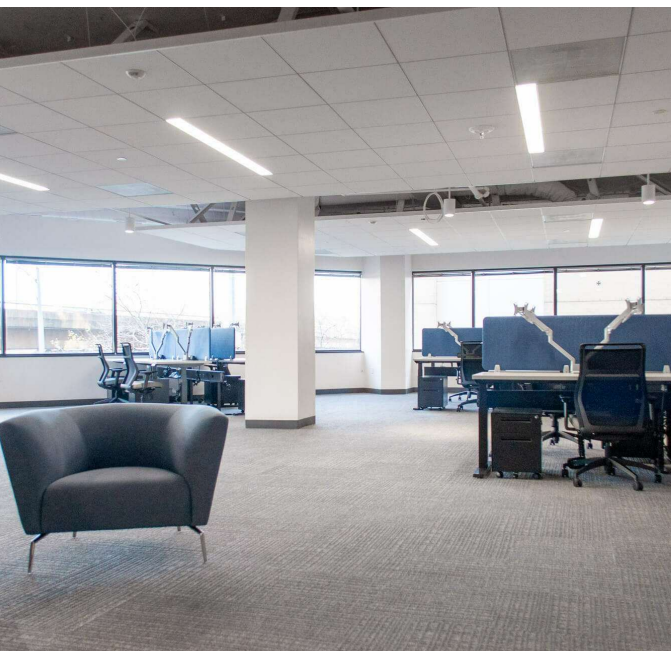


Suite	Size	Description
Spec Suite 340	2,627 SF	Available Immediately
Spec Suite 350	2,965 SF	Available Immediately - Furnished

# 2611 SOUTH CLARK

NATIONAL LANDING

Spec Suite 350



NATIONAL LANDING



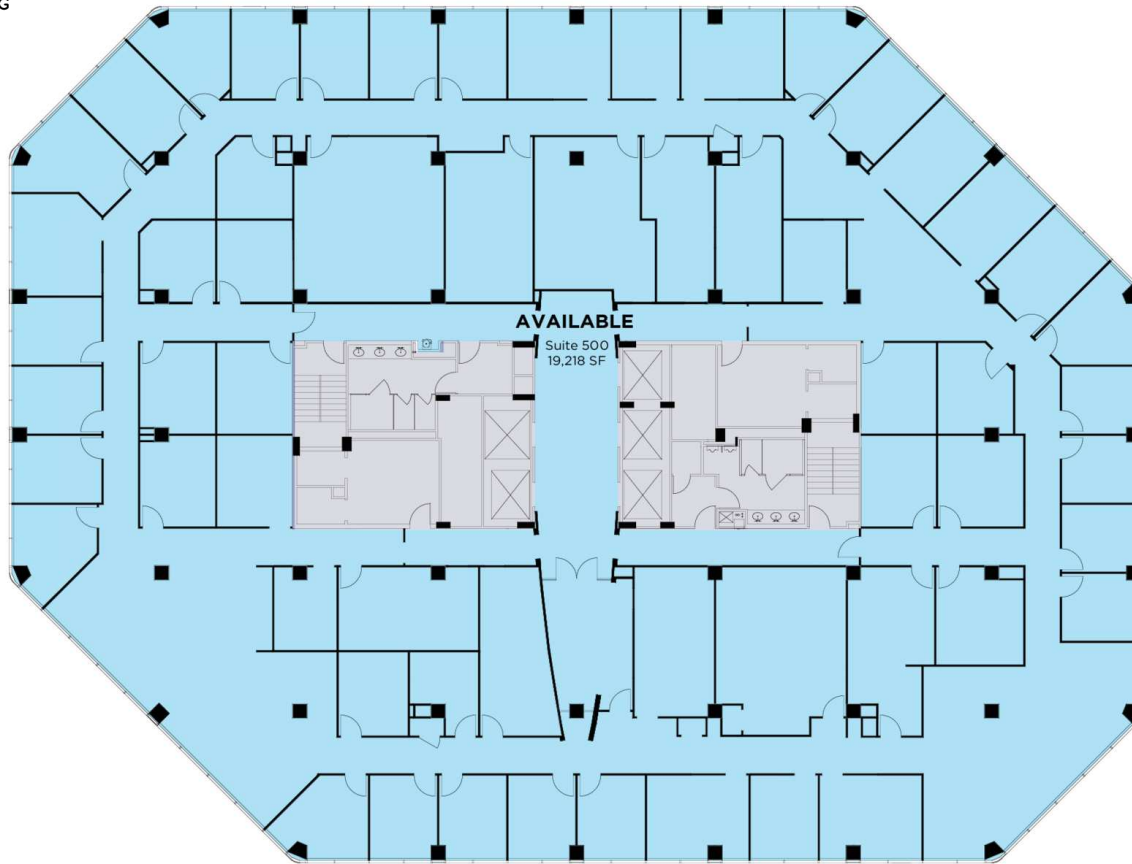
Suite	Size	Description	Virtual Tour
Spec Suite 440	2,500 SF	Available Immediately	<a href="#">View Here</a>

# 2611 SOUTH CLARK

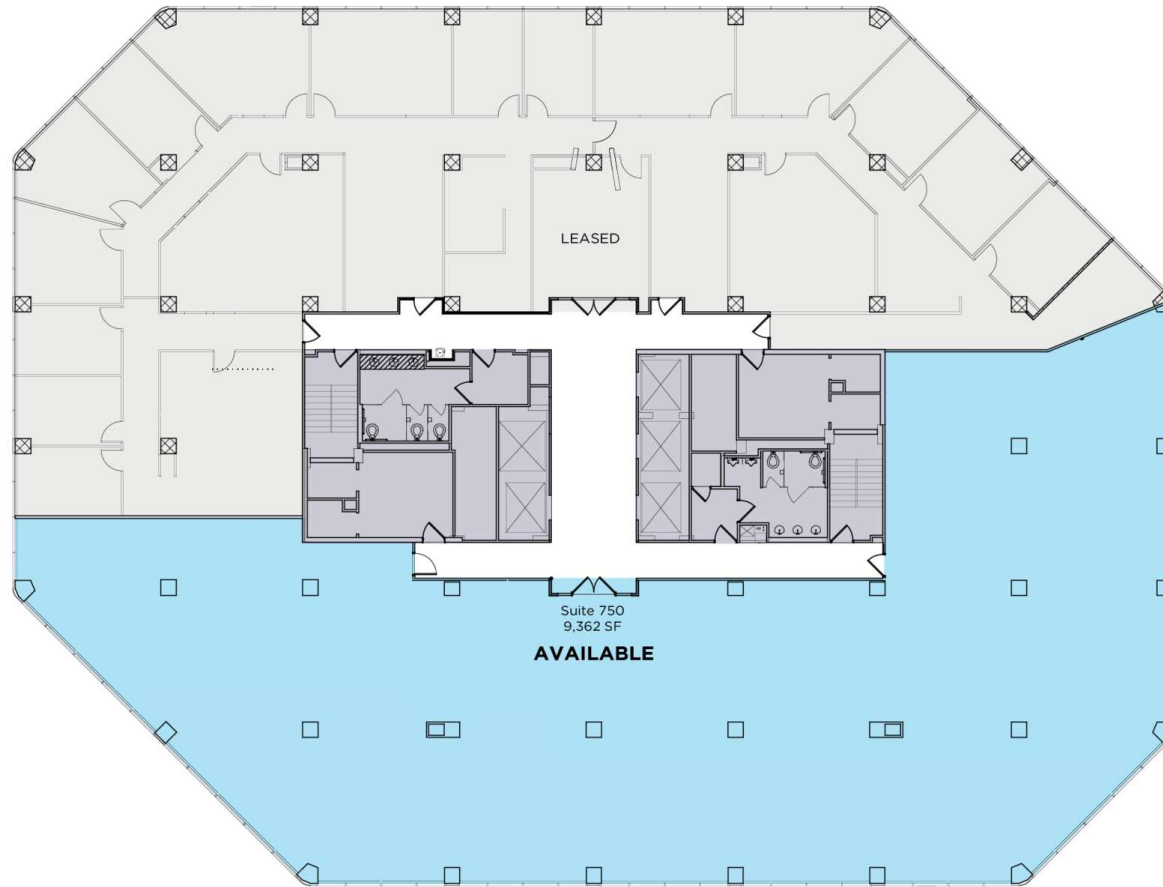
NATIONAL LANDING

## 4th Floor Townhall Spec Suites

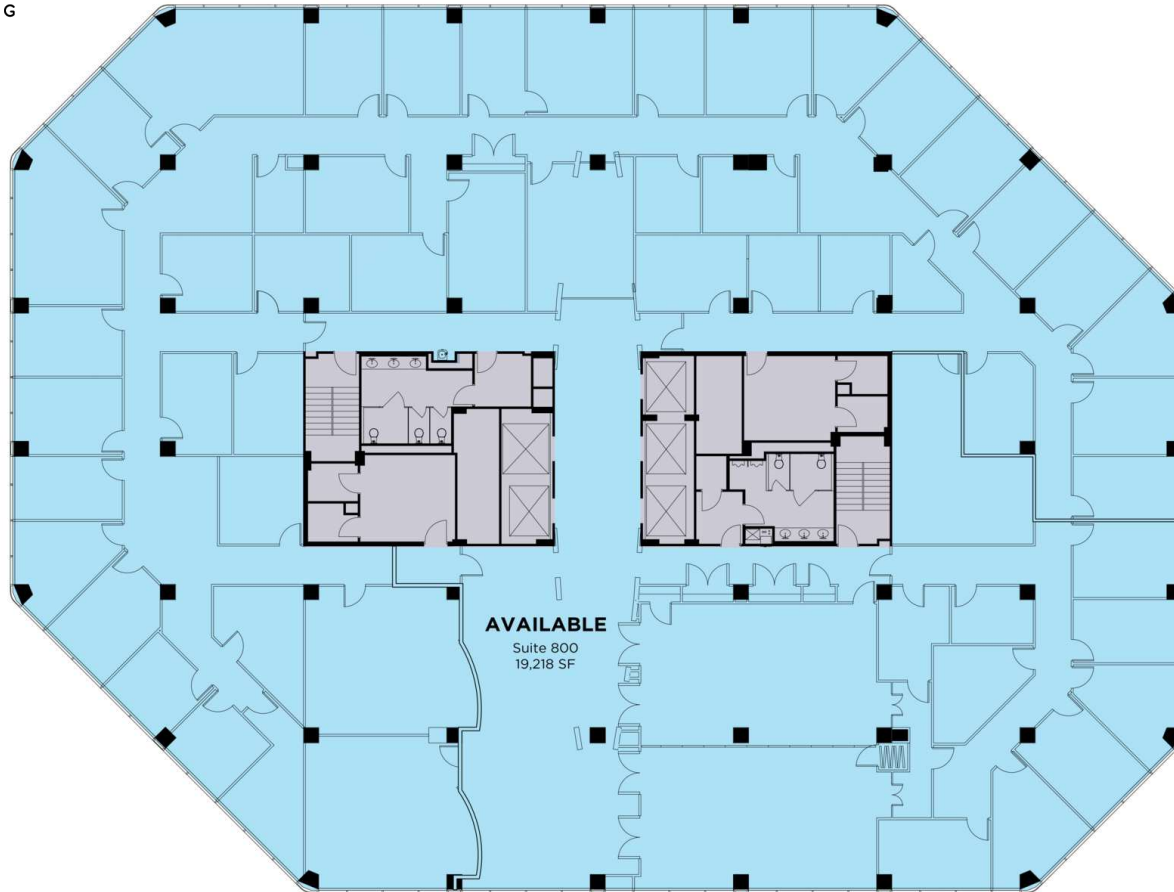




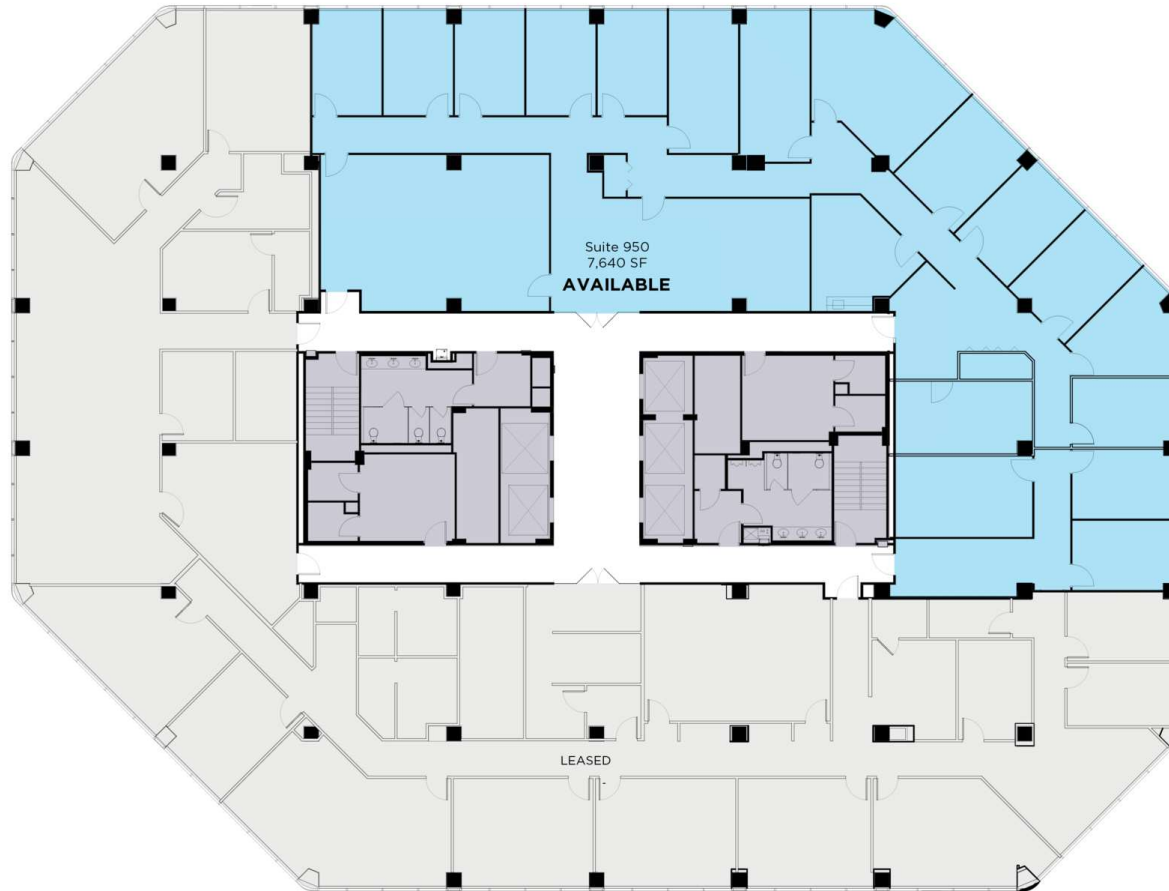
Suite	Size	Description
Suite 500	19,218 SF	Available Immediately



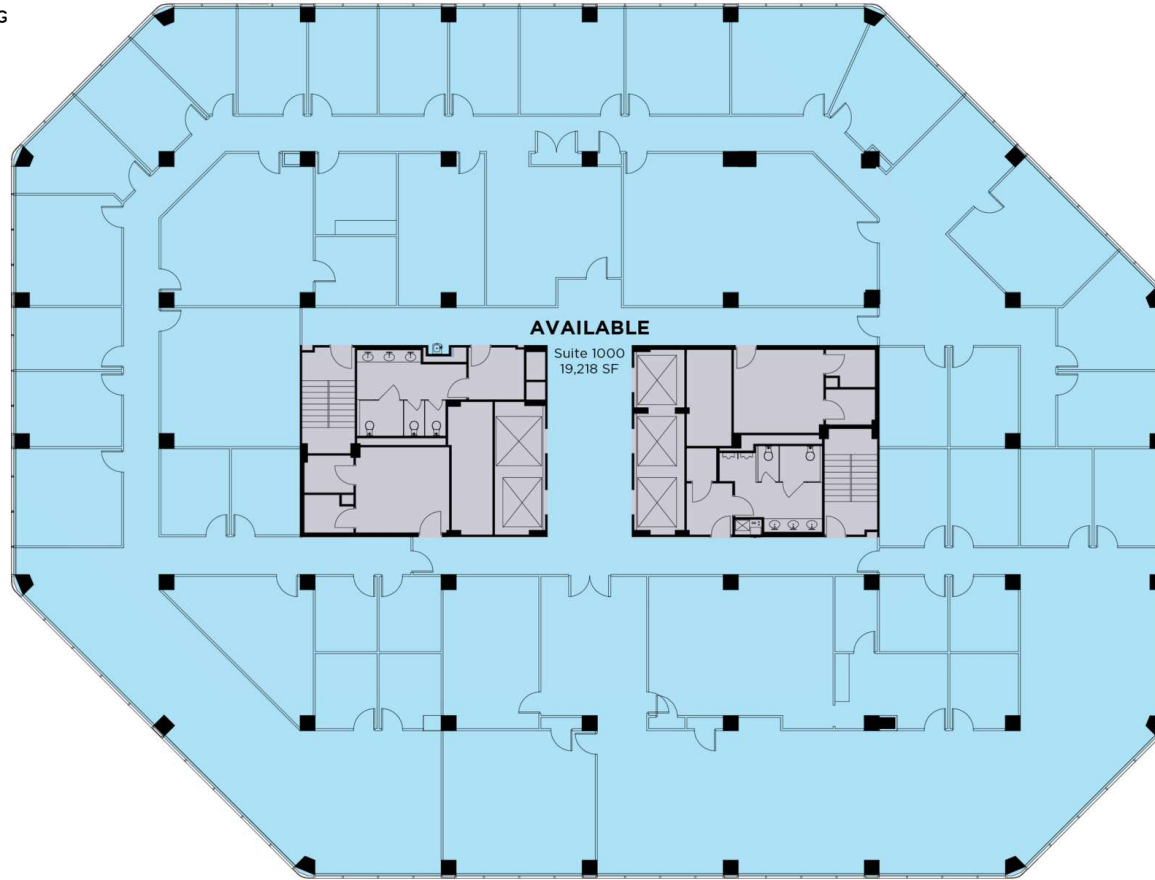
Suite	Size	Description
Suite 750	9,362 SF	Available Immediately



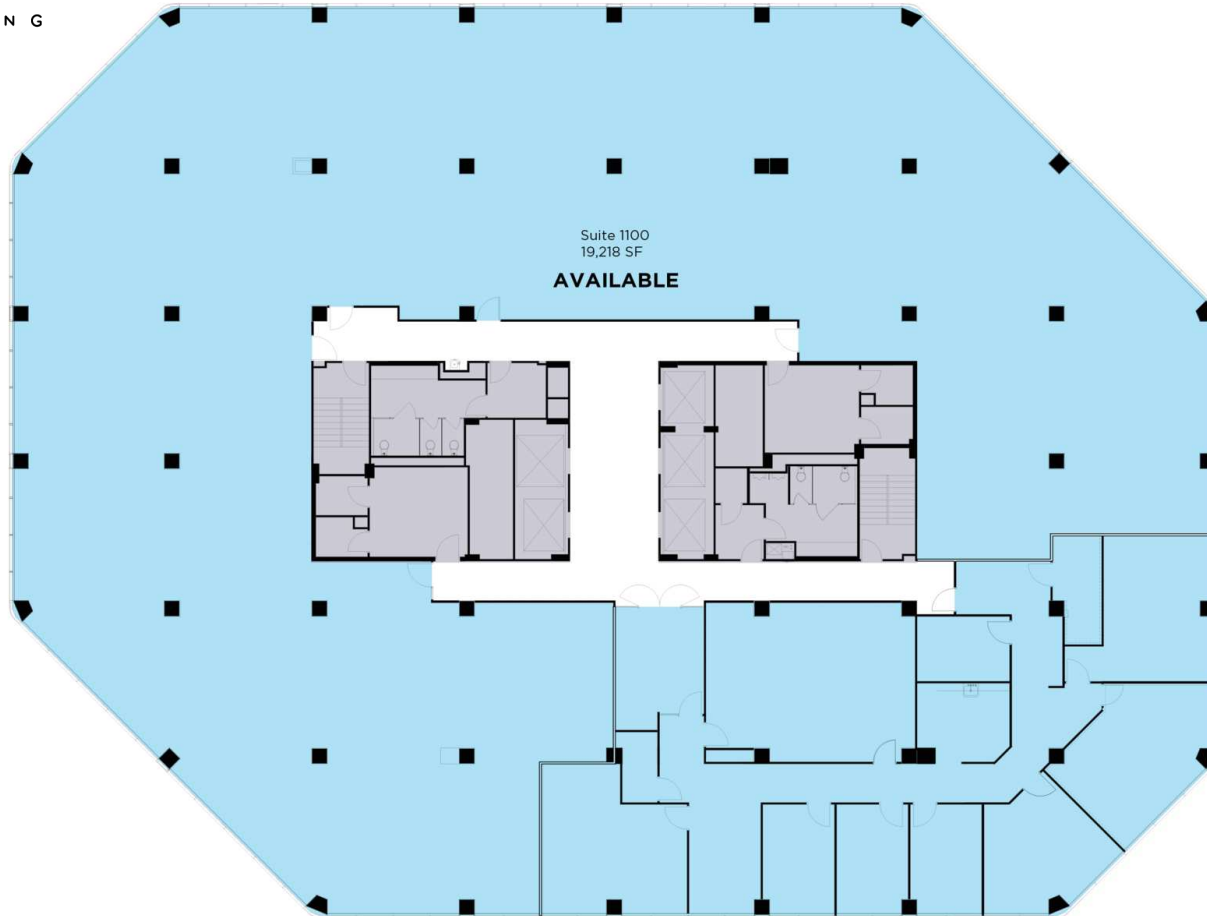
Suite	Size	Description
Suite 800	19,218 SF	Available Immediately



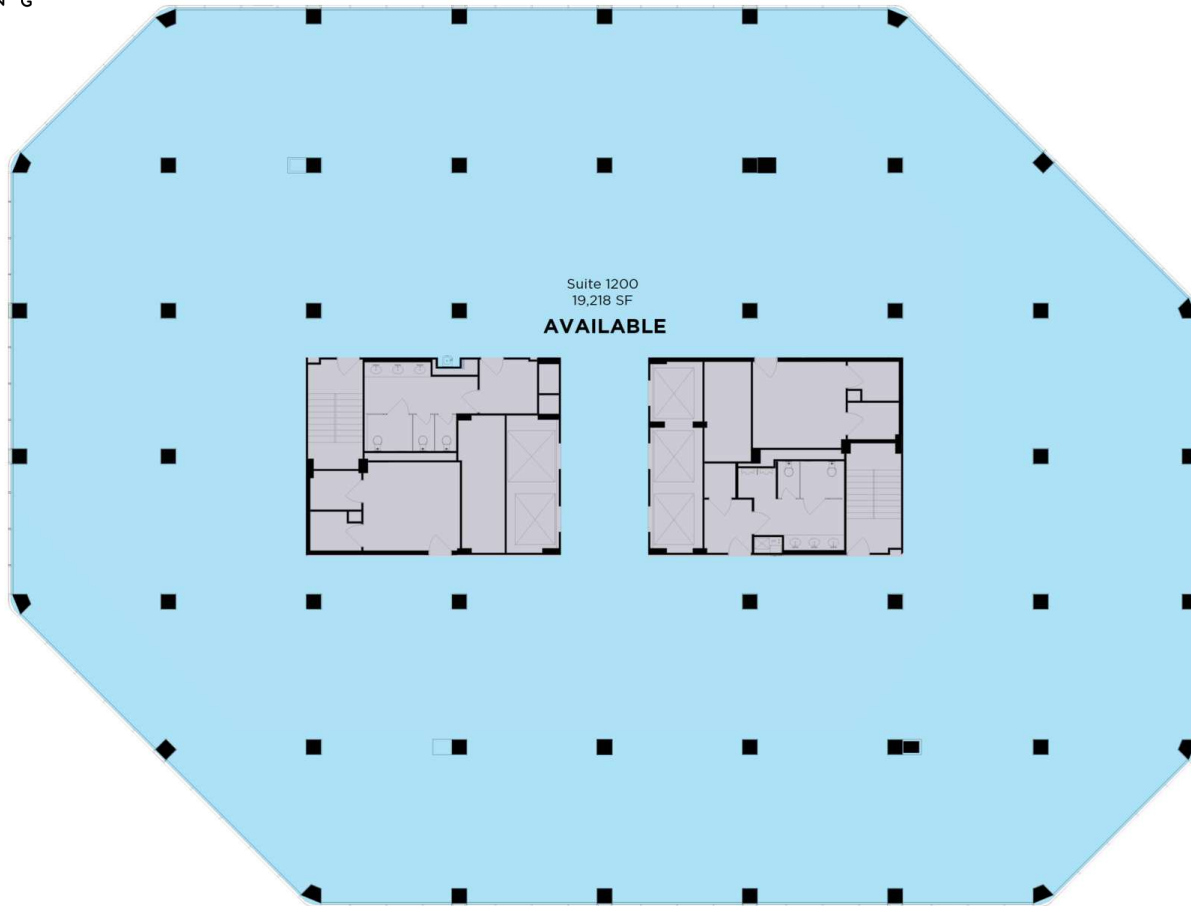
Suite	Size	Description
Suite 950	7,640 SF	Available Immediately



Suite	Size	Description
Suite 1000	19,218 SF	Available Immediately



Suite	Size	Description
Suite 1100	19,218 SF	Available Immediately



Suite	Size	Description
Suite 1200	19,218 SF	Available Immediately

# 2611 SOUTH CLARK

N A T I O N A L   L A N D I N G

**Leasing Opportunities:**  
**703.522.4600**

**Gary Cook**  
gcook@lpc.com  
703.284.3379

**Stoddie Nibley**  
snibley@lpc.com  
703.284.5884

**Connect Here.**

**2611sclark.com**

**Lincoln**

GOULD  
PROPERTY  
COMPANY