



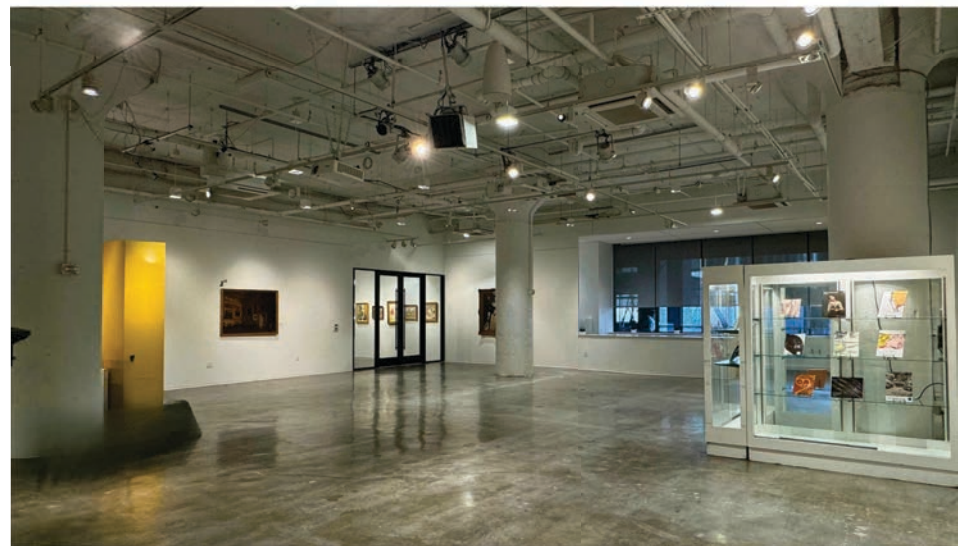
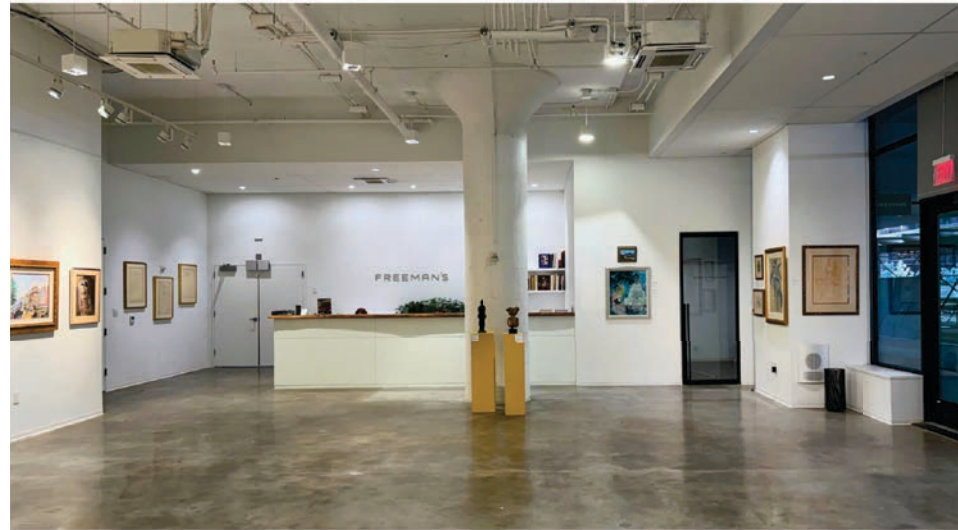
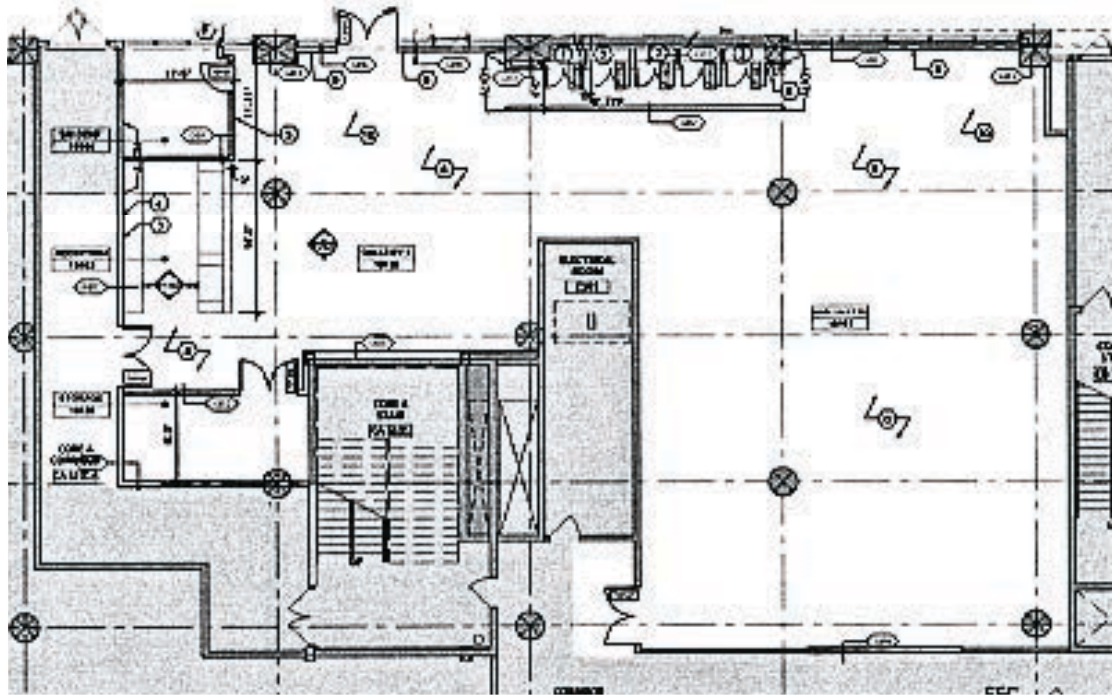
# For sublease

**4,629 SF of ground floor space available**

2400 Market St., Philadelphia, PA 19103

- Fully-equipped gallery space with polished concrete floors
- Direct ground-floor entrance and visibility from Market St.
- Ideal space for showroom, gallery, or creative office
- State of the art lighting throughout
- 3 parking spots available
- Term thru: April 30, 2030

# Floorplan







2400 Market St.  
ground floor space

**Eric Berkowitz**  
Senior Associate  
eric.berkowitz@jll.com  
+1 610 416 2226

**Alex Breitmayer**  
Managing Director  
alex.breitmayer@jll.com  
+1 267 303 6755