



LEE & ASSOCIATES

OFFICE BUILDING FOR LEASE

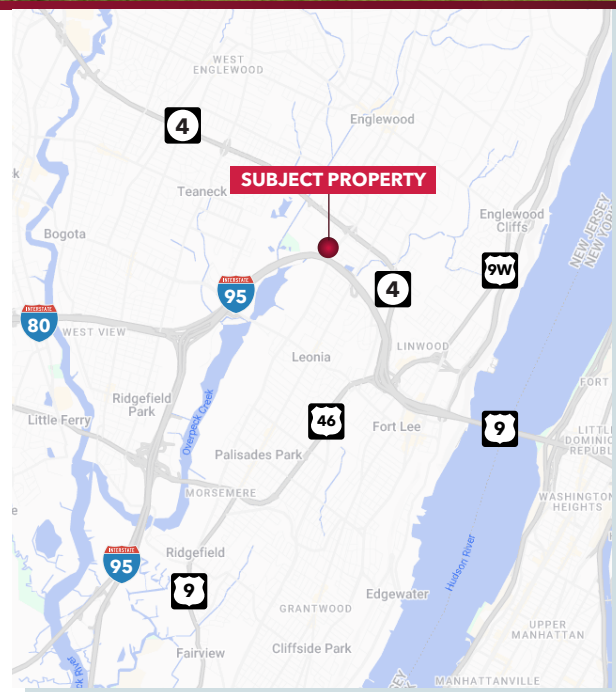
570 Grand Avenue, Englewood, NJ 07631

±1,630 SF



PROPERTY OVERVIEW

AVAILABLE SF:	±1,630 SF
ASKING RATE:	Negotiable
OCCUPANCY:	Immediately
PARKING:	3/1,000
COMMENTS:	<ul style="list-style-type: none"> • Walking distance to Rt. 4 & Buses • Close Proximity to Rt. 80 • Great for Therapist, PT or Law Firms



FOR MORE INFORMATION,
PLEASE CONTACT EXCLUSIVE BROKER:

Joe Tormen

O 973.475.7066

C 201.390.7207

joe.tormen@lee-associates.com





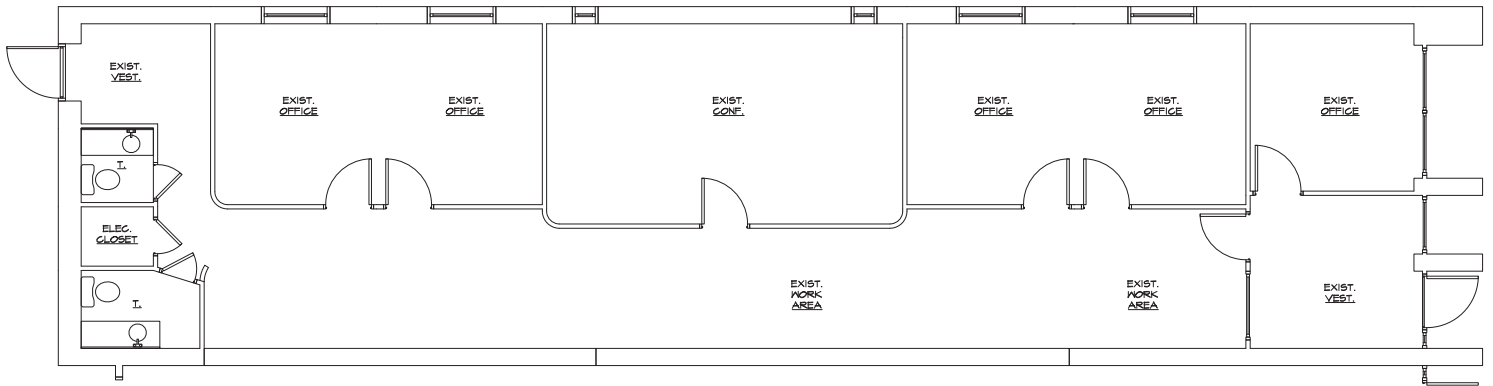
OFFICE BUILDING FOR LEASE

570 Grand Avenue, Englewood, NJ 07631

±1,630 SF



FLOOR PLAN



FOR MORE INFORMATION,
PLEASE CONTACT
EXCLUSIVE BROKER:

Joe Tormen
O 973.475.7066
C 201.390.7207
joe.tormen@lee-associates.com



All information furnished regarding property for sale, rental or financing is from sources deemed reliable, but no warranty or representation is made to the accuracy thereof and same is submitted to errors, omissions, change of price, rental or other conditions prior to sale, lease or financing or withdrawal without notice. Buyer acknowledges that Lee & Associates - WBE, LLC ("Broker") has not verified the information contained herein and does not make any representation about its accuracy. Buyer should confirm information contained in the Offering using its own sources. No liability of any kind is to be imposed on Broker herein.