

1180
JASPER STREET

Ambulatory Surgical Center

Rare ASC building opportunity



Jones Lang LaSalle Americas, Inc. License #: CO508577000

ABOUT THE OFFERING

We are thrilled to announce the transformation of an existing building into state-of-the-art Ambulatory Surgery Center (ASC) space in beautiful Pinellas County, Florida. This prime location is poised to cater to the growing demand for outpatient medical services, providing a versatile and adaptable environment for healthcare providers. With its strategic positioning in this thriving region, the converted building offers an incredible opportunity to establish a cutting-edge ASC facility in a highly sought-after location.



Former drive-through converted to pick up area post-surgery

Back Up Generator Installed



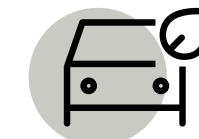
Building size: ±14,650 SF



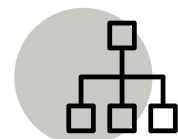
2025 Conversion



Land area: ±1.41 AC



Parking: ±60 spaces /
4.2 per 1,000 SF

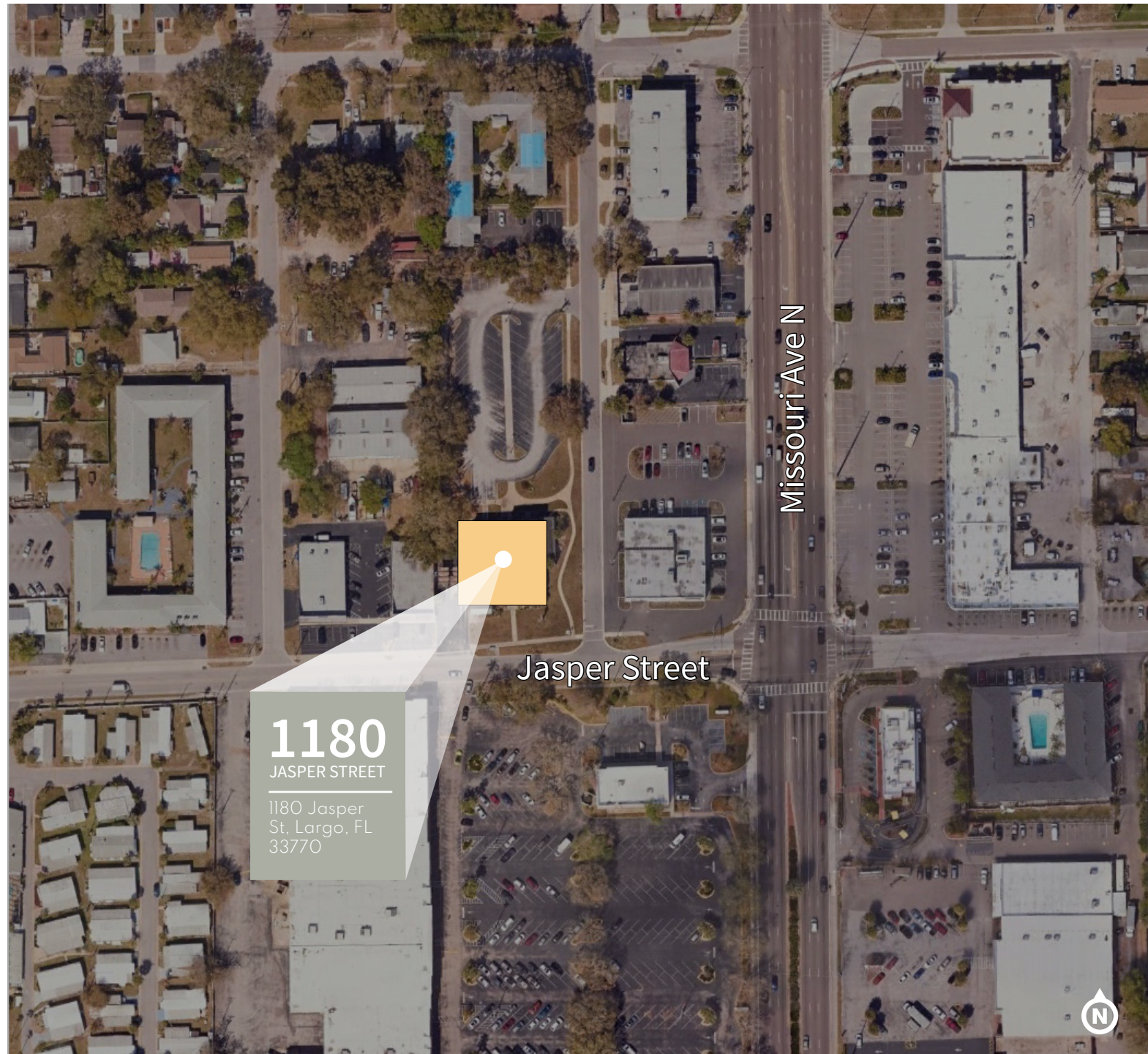


Two-story façade
2 ORs
ASC on First Floor
Clinical Space on Second Floor

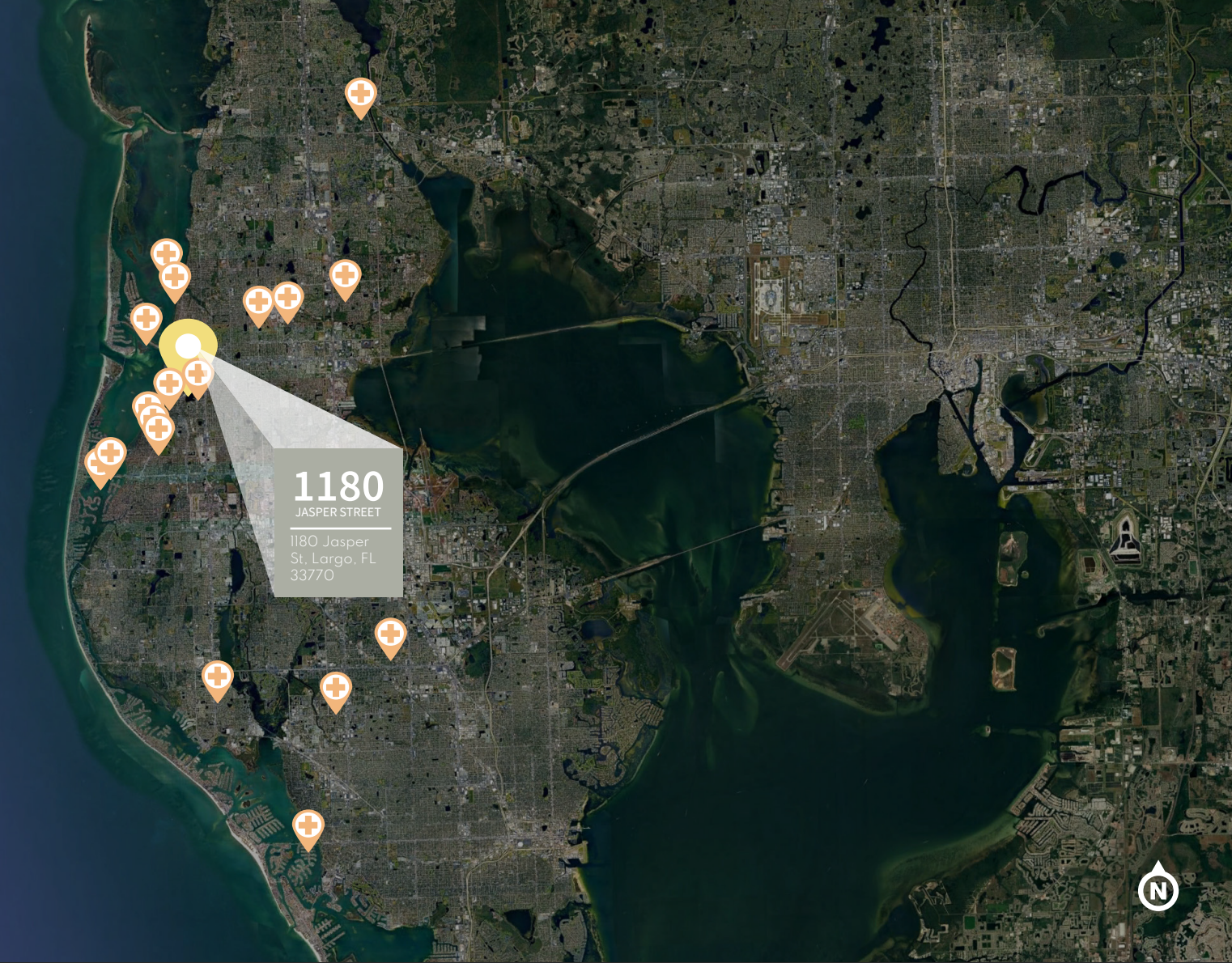


Accessible to major largo
corridor Missouri Ave

LOCATION

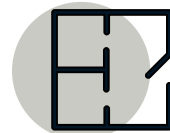
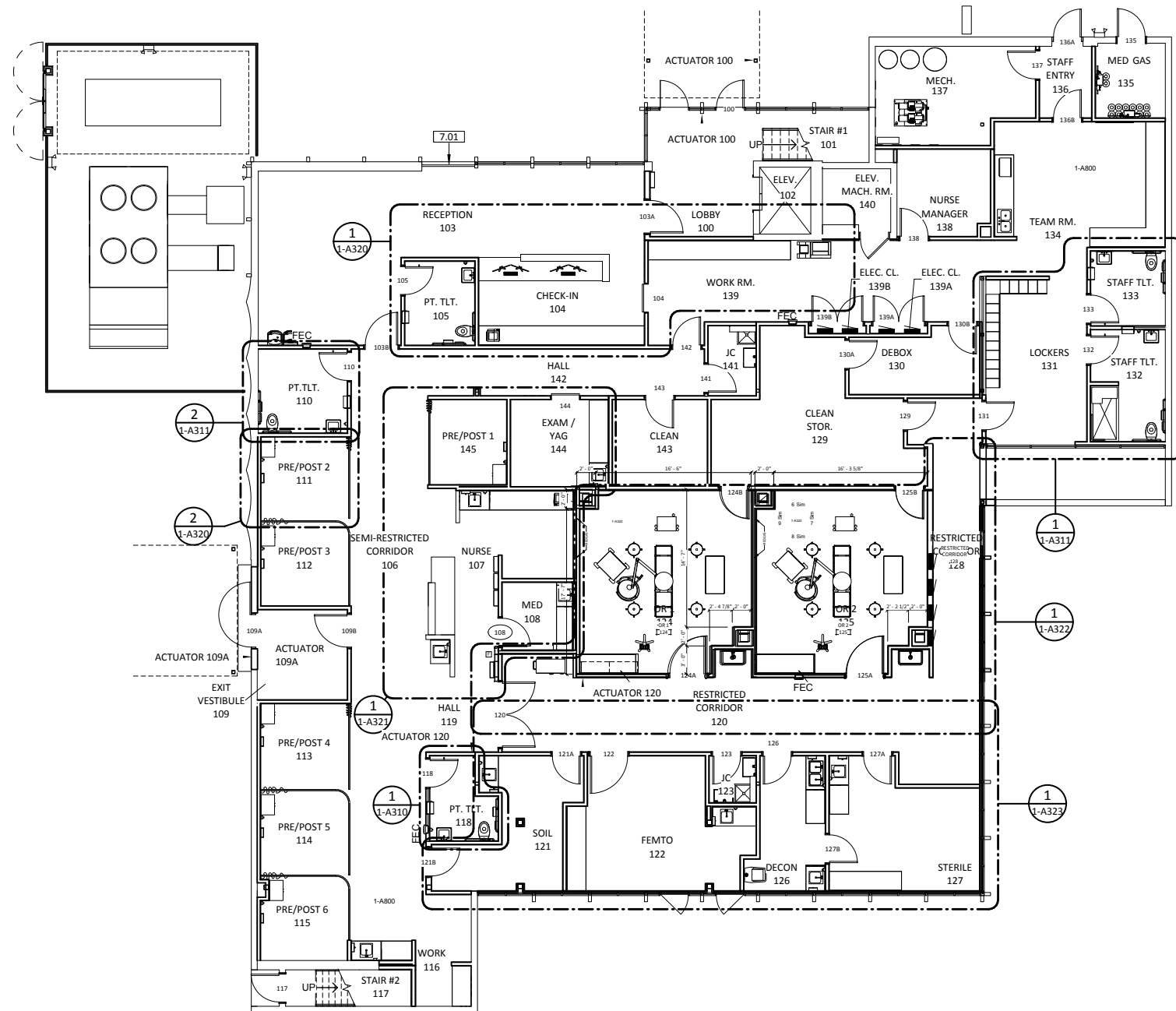


- BayCare Health System
- Morton Plant Hospital
- Highway 19
- Downtown Clearwater
- Bay Pines VA Healthcare System
- HCA Florida St. Petersburg Hospital
- HCA Florida Pasadena Hospital
- HCA Florida Northside Hospital
- HCA Florida Clearwater Emergency
- Salient Medical Center
- HCA Florida Largo Hospital
- Suncoast Hospital Rehab
- HCA Florida Largo West Hospital
- Fresenius Medical Care at Largo Medical Center Hospital
- St. ANTHONYS
- Encompass Health Rehabilitation Hospital of Largo
- Morton Plant Hospital- Turley Family Health Center
- Mease Countryside Hospital

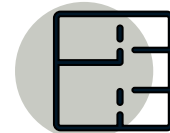


NEARBY HEALTHCARE AMENITIES FOR PATIENTS AND GUESTS

FIRST FLOOR

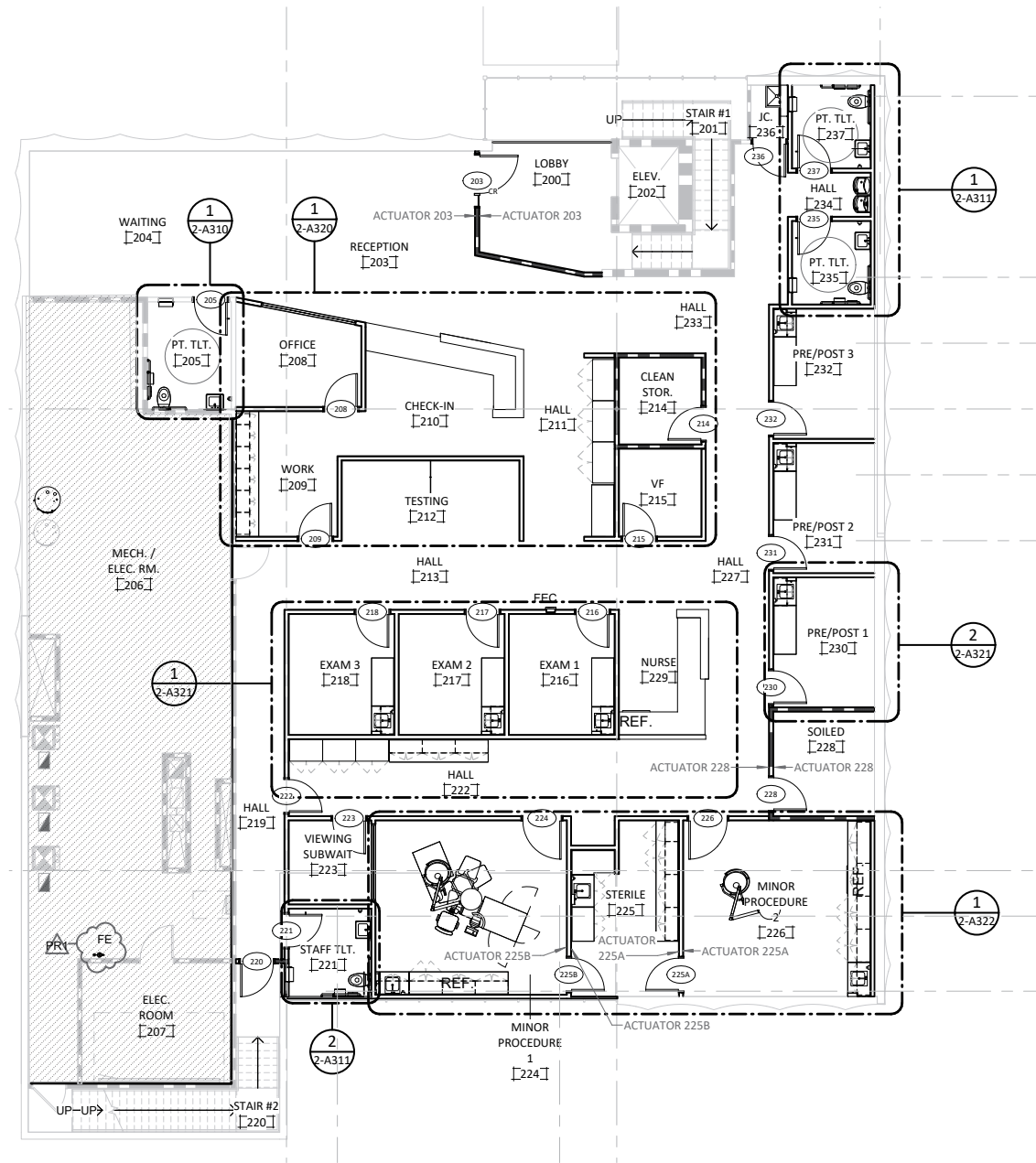


First floor
8,199 sf



Second floor
6,451 sf

SECOND FLOOR



CONSTRUCTION COMPLETION PHOTOS



1180
JASPER STREET

FOR LEASING INQUIRIES:

Lucia F. Hedke, LEED GA

Managing Director
M +1 202-294-5359

Bryan Rodriguez

Vice President
M +1 813-230-7336



Jones Lang LaSalle Americas, Inc. License #: CO508577000

Although information has been obtained from sources deemed reliable, JLL does not make any guarantees, warranties or representations, express or implied, as to the completeness or accuracy as to the information contained herein. Any projections, opinions, assumptions or estimates used are for example only. There may be differences between projected and actual results, and those differences may be material. JLL does not accept any liability for any loss or damage suffered by any party resulting from reliance on this information. If the recipient of this information has signed a confidentiality agreement with JLL regarding this matter, this information is subject to the terms of that agreement. ©2026 Jones Lang LaSalle Brokerage, Inc. All rights reserved.