

# FOR LEASE - ZONED MEDICAL

±4,777 SF SINGLE-STORY MEDICAL OR OFFICE SPACE

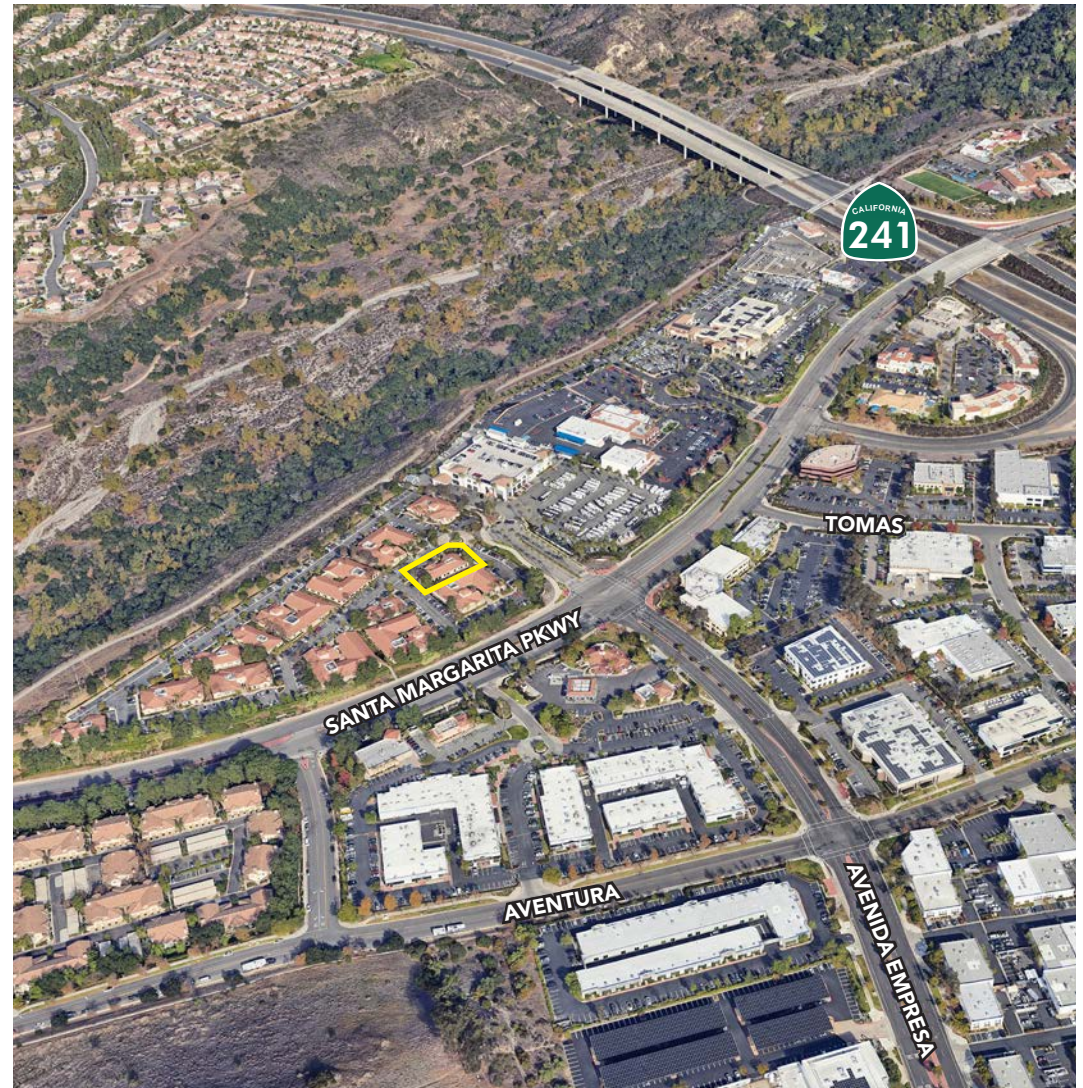


## ARBOURS OFFICE CAMPUS

29803 Santa Margarita Parkway, Rancho Santa Margarita, CA

## PROPERTY HIGHLIGHTS

- ±4,777 SF Medical or Office Space
- Currently Used for Physical Therapy Office
- 5:1,000 Parking Ratio
- Built in 2000
- Campus Setting with Timeless Santa Barbara style architecture, open courtyards, and attractive landscaping
- Walking Distance to Numerous Retail Amenities
- Easy Access to the 241 FTC Toll Road



EXCLUSIVELY LISTED BY:

**MARK JERUE**

Senior Vice President  
License ID# 01073399  
949.790.3121  
mjerue@leeirvine.com

**CRAIG FITTERER**

Senior Vice President  
License ID# 01246929  
949.790.3123  
cfitterer@leeirvine.com

**BJ FELL**

Senior Vice President  
License ID# 01929179  
949.790.3144  
bfell@leeirvine.com

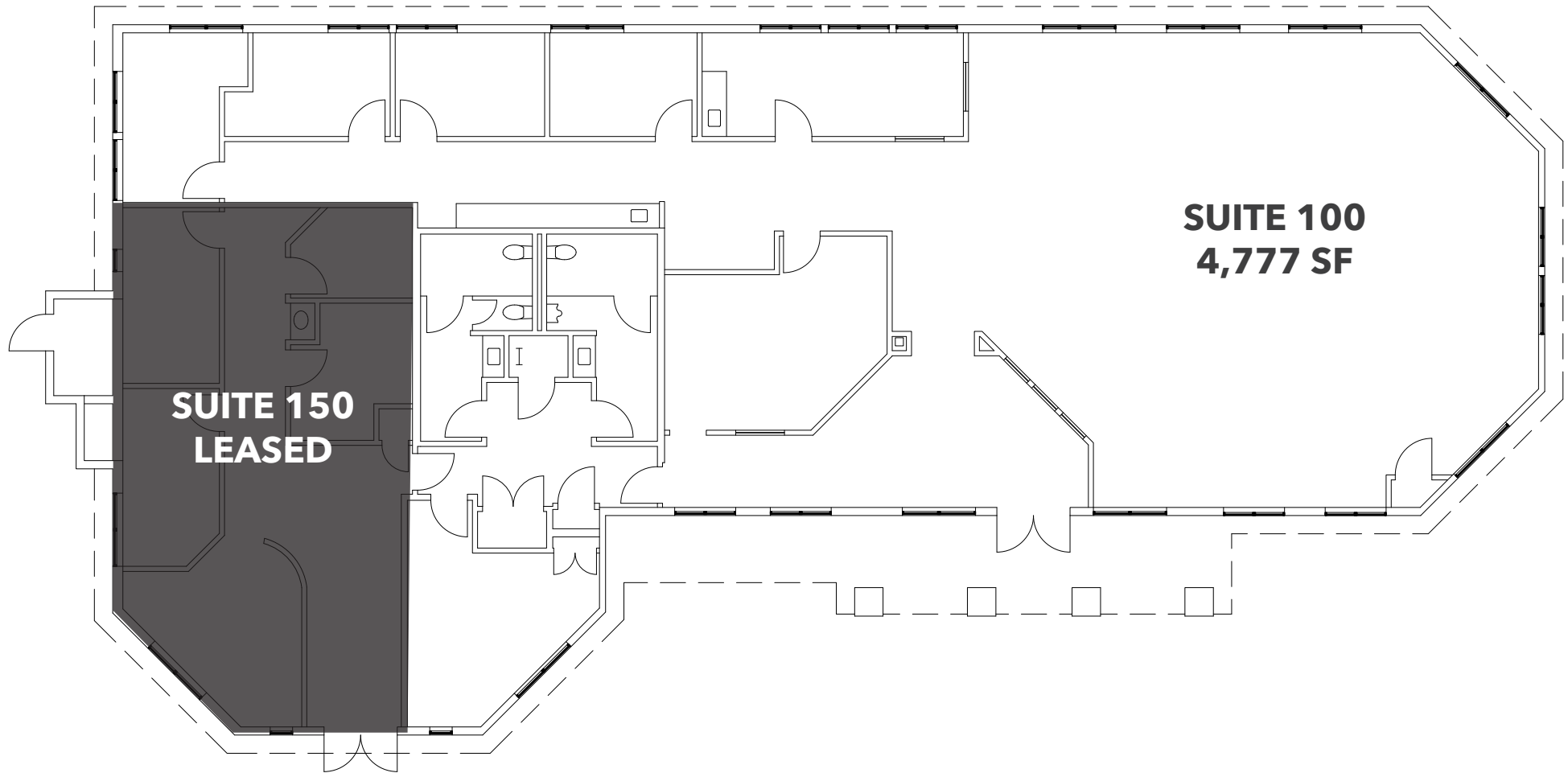
**GIANCARLO SPINOSI**

Associate  
License ID# 02065254  
949.790.3109  
gspinosi@leeirvine.com

**LEE & ASSOCIATES**

COMMERCIAL REAL ESTATE SERVICES

No warranty or representation is made to the accuracy of the foregoing information. Terms of sale or lease and availability are subject to change or withdrawal without notice.



EXCLUSIVELY LISTED BY:

**MARK JERUE**

Senior Vice President  
License ID# 01073399  
949.790.3121  
mjerue@leeirvine.com

**CRAIG FITTERER**

Senior Vice President  
License ID# 01246929  
949.790.3123  
cfitterer@leeirvine.com

**BJ FELL**

Senior Vice President  
License ID# 01929179  
949.790.3144  
bfell@leeirvine.com

**GIANCARLO SPINOSI**

Associate  
License ID# 02065254  
949.790.3109  
gspinosi@leeirvine.com



COMMERCIAL REAL ESTATE SERVICES

No warranty or representation is made to the accuracy of the foregoing information. Terms of sale or lease and availability are subject to change or withdrawal without notice.

# ARBOURS OFFICE CAMPUS

# AVAILABLE FOR LEASE

29803 Santa Margarita Parkway, Rancho Santa Margarita



EXCLUSIVELY LISTED BY:

**MARK JERUE**

Senior Vice President  
License ID# 01073399  
949.790.3121  
mjerue@leeirvine.com

**CRAIG FITTERER**

Senior Vice President  
License ID# 01246929  
949.790.3123  
cfitterer@leeirvine.com

**BJ FELL**

Senior Vice President  
License ID# 01929179  
949.790.3144  
bfell@leeirvine.com

**GIANCARLO SPINOSI**

Associate  
License ID# 02065254  
949.790.3109  
gspinosi@leeirvine.com

**LEE & ASSOCIATES**

COMMERCIAL REAL ESTATE SERVICES

No warranty or representation is made to the accuracy of the foregoing information. Terms of sale or lease and availability are subject to change or withdrawal without notice.