



1180 Boylston Street • Brookline, MA • Chestnut Hill

1,061 SF - 5,140 SF (Subdividable) • Retail / Restaurant Space



1180 Boylston Street is a **NEW** high profile mixed use **luxury** building in Chestnut Hill, one of the **highest income** and **strongest retail** areas in Greater Boston. Located at the corner of Hammond and Route 9 with an Average Daily Traffic Count of **42,000 cars per day**. There will be **50 residential units** above ground floor retail space featuring **floor to ceiling glass** for great visibility.



1,061 SF - 5,140 SF Subdividable



Available
Summer / Fall
2025

Key
Area Tenants

lululemon athletica

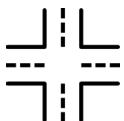
DAVIO'S
NORTHERN ITALIAN STEAKHOUSE

alo

THE STREET

SHOWCASE
CINEMA OF LUX

[solidcore]



Corner of
Hammond St.
& Route 9



Retail Space
Restaurant Space
Venting Available



Floor to Ceiling
Glass Windows
For Great
Visibility



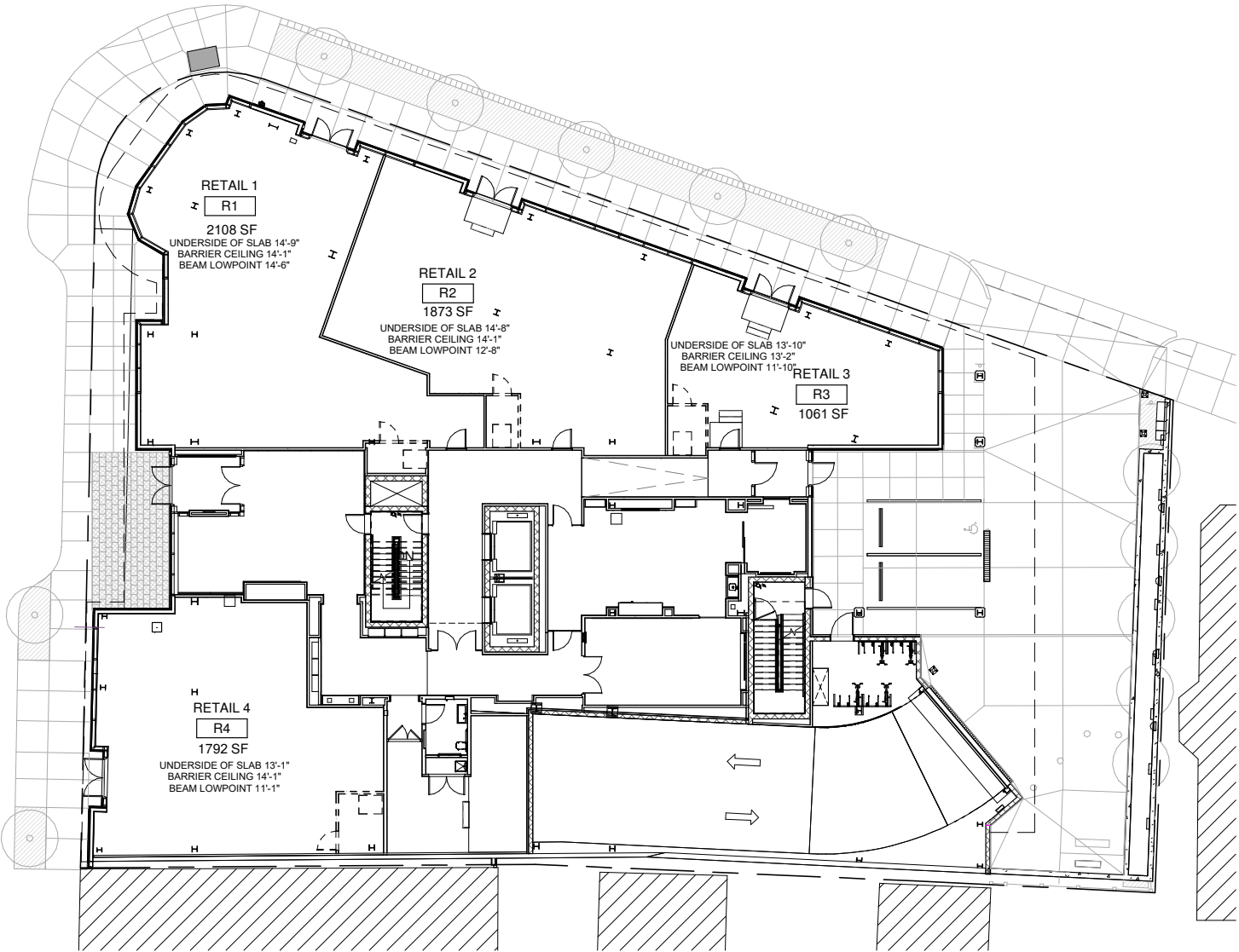
Underground Parking
20 Dedicated
Garage Spaces For
Retail



Chestnut Hill
MBTA Station
4 Min Walk

60 MBTA Bus is on Rt 9

SITE PLAN



CHESTNUT HILL • 1180 BOYLSTON STREET • BROOKLINE, MA



Find Your Place.



JIM CONVISER
JIM@CONVISERPG.COM
MOBILE: (617) 839-0456

ADAM CONVISER
ADAM@CONVISERPG.COM
MOBILE: (617) 593-1700



CONVISER PROPERTY GROUP, INC
220 RESERVOIR STREET, SUITE 9 • NEEDHAM, MA 02494
O: (781) 320-0600 • F: (781) 791-4599 • WWW.CONVISERPG.COM

CHESTNUT HILL • 1180 BOYLSTON STREET • BROOKLINE, MA

