

1 | FULL FLOOR FURNITURE PLAN

OFFICE BASICS, INC. EXPRESSLY RESERVES ITS COMMON LAW COPYRIGHT AND OTHER PROPERTY RIGHTS IN THESE DOCUMENTS. ALL DRAWINGS, SPECIFICATIONS AND COPIES THEREOF ARE AND SHALL REMAIN THE PROPERTY OF OFFICE BASICS, INC. THEY ARE TO BE USED ONLY IN CONNECTION WITH THIS PROJECT AND ARE NOT TO BE REPRODUCED OR USED FOR ANY OTHER PROJECT, NOR ARE THEY TO BE ASSIGNED TO ANY THIRD PARTY WITHOUT FIRST OBTAINING WRITTEN PERMISSION AND CONSENT FROM OFFICE BASICS, INC.

THE BARCLAY GROUP
FURNITURE DESIGN

DATE: 02.18.26

SFA - Strategic Funding
Alternatives

Woodland Falls
Bldg 220 -
Suite 300

DRAWN BY: LMB
REVISIONS: 00

SCALE: XX" = 1'-0"



22 CREEK CIRCLE, BOOTHWYN PA 19061
(P) 800-541-5855 (F) 866-225-4049



22 CREEK CIRCLE, BOOTHWYN PA 19061
 (P) 800-541-5855 (F) 866-225-4049

DRAWN BY: LMB
 REVISIONS: 00

SCALE: XX" = 1'-0"

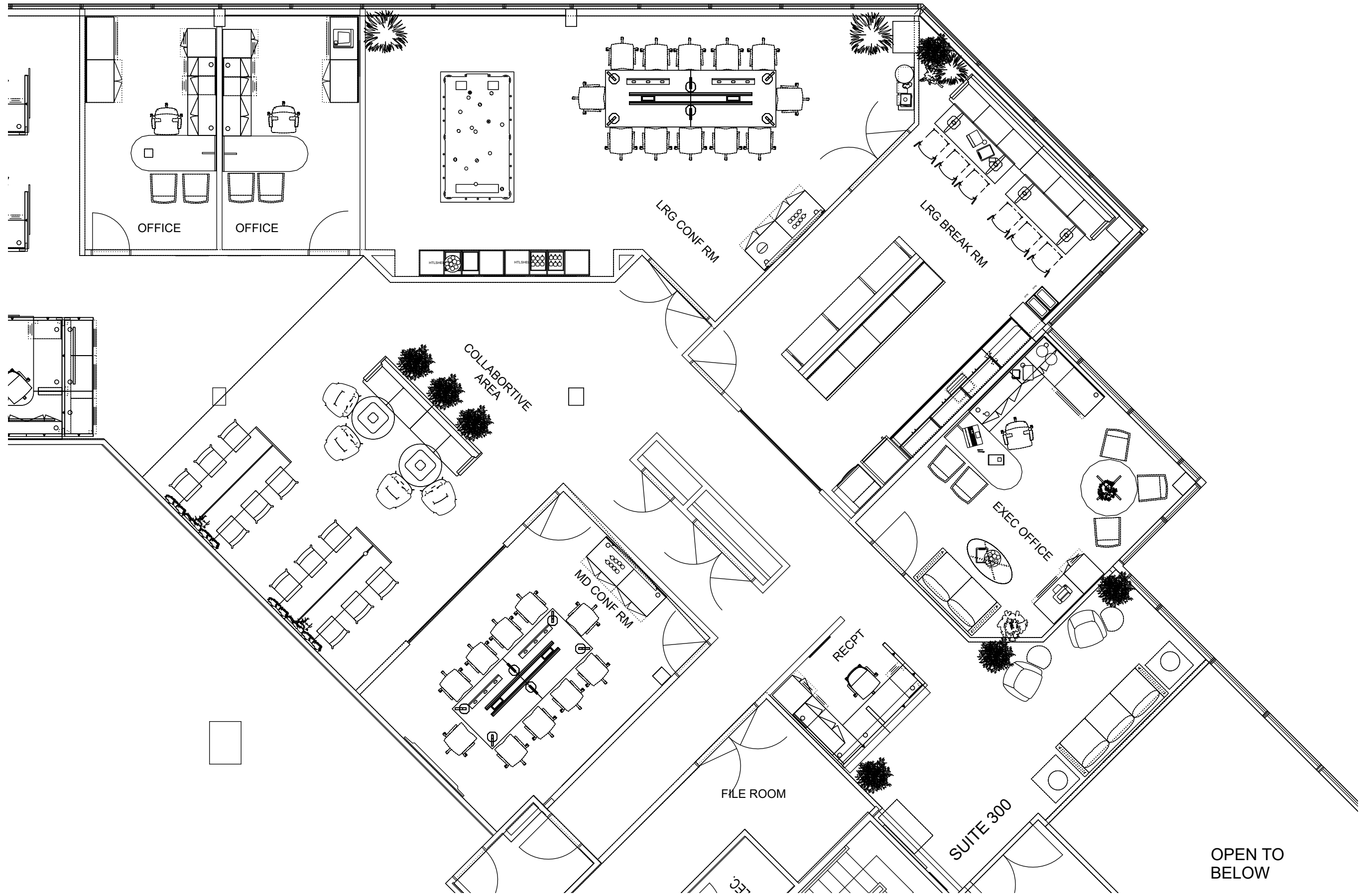
**SFA - Strategic Funding
 Alternatives**

Woodland Falls
 Bldg 220 -
 Suite 300

THE BARCLAY GROUP
 FURNITURE DESIGN

DATE: 02.18.26

OFFICE BASICS, INC. EXPRESSLY
 RESERVES ITS COMMON LAW
 COPYRIGHT AND OTHER PROPERTY
 RIGHTS IN THESE DOCUMENTS. ALL
 DRAWINGS, SPECIFICATIONS AND
 COPIES THEREOF ARE AND SHALL
 REMAIN THE PROPERTY OF OFFICE
 BASICS, INC. THEY ARE TO BE USED
 ONLY IN CONNECTION WITH THIS PROJECT
 AND ARE NOT TO BE REPRODUCED OR
 OTHERWISE USED FOR ANY OTHER
 OTHER PROJECT, NOR ARE THEY TO
 BE ASSIGNED TO ANY THIRD PARTY
 WITHOUT FIRST OBTAINING WRITTEN
 PERMISSION AND CONSENT FROM
 OFFICE BASICS, INC.



DRAWN BY: LMB
 REVISIONS: 00

SCALE: XX" = 1'-0"

**SFA - Strategic Funding
 Alternatives**

Woodland Falls
 Bldg 220 -
 Suite 300

RECEPTION, LRG & SM
 CONF RMS LRG BREAK RM,
 COLLABORTIVE AREA, &
 OFFICES
 ENLARGED FLOOR PLANS

DATE: 02.18.26

OFFICE BASICS, INC. EXPRESSLY
 RESERVES ITS COMMON LAW
 COPYRIGHT AND OTHER PROPERTY
 RIGHTS IN THESE DOCUMENTS. ALL
 DRAWINGS, SPECIFICATIONS AND
 COPIES THEREOF ARE AND SHALL
 REMAIN THE PROPERTY OF OFFICE
 BASICS, INC. THEY ARE TO BE USED
 ONLY IN CONNECTION WITH THIS PROJECT
 AND ARE NOT TO BE REPRODUCED,
 COPIED, OR ANY PART THEREOF TO
 BE ASSIGNED TO ANY THIRD PARTY
 WITHOUT FIRST OBTAINING WRITTEN
 PERMISSION AND CONSENT FROM
 OFFICE BASICS, INC.



22 CREEK CIRCLE, BOOTHWYN PA 19061
 (P) 800-541-5855 (F) 866-225-4049



OFFICE BASICS, INC. EXPRESSLY RESERVES ITS COMMON LAW COPYRIGHT AND OTHER PROPERTY RIGHTS IN THESE DOCUMENTS. ALL DRAWINGS, SPECIFICATIONS AND COPIES THEREOF ARE AND SHALL REMAIN THE PROPERTY OF OFFICE BASICS, INC. THEY ARE TO BE USED ONLY IN CONNECTION WITH THIS PROJECT AND ARE NOT TO BE REPRODUCED OR USED FOR ANY OTHER PROJECT WITHOUT FIRST OBTAINING WRITTEN PERMISSION AND CONSENT FROM OFFICE BASICS, INC.

THE BARCLAY GROUP
RECEPTION AREA
RENDERINGS

DATE: 02.18.26

SFA - Strategic Funding
Alternatives

Woodland Falls
Bldg 220 -
Suite 300

DRAWN BY: LMB
REVISIONS: 00

SCALE: XX" = 1'-0"



OFFICE BASICS, INC. EXPRESSLY RESERVES ITS COMMON LAW COPYRIGHT AND OTHER PROPERTY RIGHTS IN THESE DOCUMENTS. ALL DRAWINGS, SPECIFICATIONS AND COPIES THEREOF ARE AND SHALL REMAIN THE PROPERTY OF OFFICE BASICS, INC. THEY ARE TO BE USED ONLY IN CONNECTION WITH THIS PROJECT AND ARE NOT TO BE REPRODUCED OR USED IN ANY OTHER PROJECT WITHOUT THE WRITTEN PERMISSION AND CONSENT FROM OFFICE BASICS, INC.

THE BARCLAY GROUP
LRG CONF RM & BREAK RM
RENDERINGS

DATE: 02.18.26

SFA - Strategic Funding
Alternatives

Woodland Falls
Bldg 220 -
Suite 300

DRAWN BY: LMB
REVISIONS: 00

SCALE: XX" = 1'-0"



OFFICE BASICS, INC. EXPRESSLY RESERVES ITS COMMON LAW COPYRIGHT AND OTHER PROPERTY RIGHTS IN THESE DOCUMENTS. ALL DRAWINGS, SPECIFICATIONS AND COPIES THEREOF ARE AND SHALL REMAIN THE PROPERTY OF OFFICE BASICS, INC. THEY ARE TO BE USED ONLY IN CONNECTION WITH THIS PROJECT AND ARE NOT TO BE REPRODUCED OR USED IN ANY MANNER FOR ANY OTHER PROJECT, NOR ARE THEY TO BE ASSIGNED TO ANY THIRD PARTY WITHOUT FIRST OBTAINING WRITTEN PERMISSION AND CONSENT FROM OFFICE BASICS, INC.

THE BARCLAY GROUP
LRG CONF RM
RENDERINGS

DATE: 02.18.26

SFA - Strategic Funding
Alternatives

Woodland Falls
Bldg 220 -
Suite 300

DRAWN BY: LMB
REVISIONS: 00

SCALE: XX" = 1'-0"





7 | FRONT EXEC OFFICE

OFFICE BASICS, INC. EXPRESSLY
RESERVES ITS COMMON LAW
COPYRIGHT AND OTHER PROPERTY
RIGHTS IN THESE DOCUMENTS. ALL
DRAWINGS, SPECIFICATIONS AND
COPIES THEREOF ARE AND SHALL
REMAIN THE PROPERTY OF OFFICE
BASICS, INC. THEY ARE TO BE USED
ONLY IN CONNECTION WITH THIS PROJECT
AND ARE NOT BE LOANED, REPRODUCED,
OR ASSIGNED TO ANY THIRD PARTY
WITHOUT FIRST OBTAINING WRITTEN
PERMISSION AND CONSENT FROM
OFFICE BASICS, INC.

THE BARCLAY GROUP
LRG CONF RM
RENDERINGS

DATE: 02.18.26

SFA - Strategic Funding
Alternatives

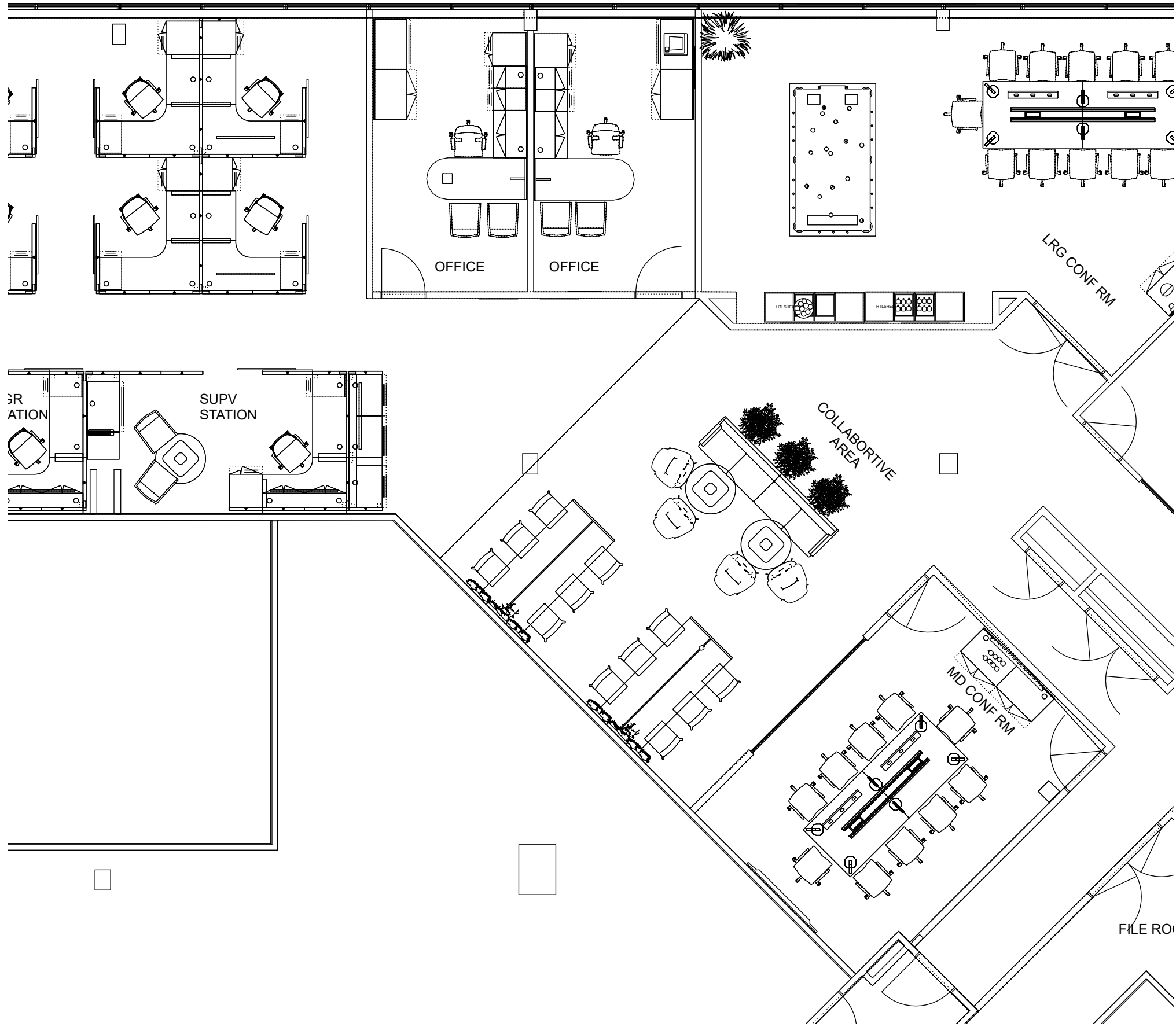
Woodland Falls
Bldg 220 -
Suite 300

DRAWN BY: LMB
REVISIONS: 00

SCALE: XX" = 1'-0"



22 CREEK CIRCLE, BOOTHWYN PA 19061
(P) 800-541-5855 (F) 866-225-4049



8 | ENLARGED FURNITURE PLAN- OFFICES, SM CONF RM, COLLABORTIVE AREA AND OPEN AREA A

OFFICE BASICS, INC. EXPRESSLY
RESERVES ITS COMMON LAW
COPYRIGHT AND OTHER PROPERTY
RIGHTS IN THESE DOCUMENTS. ALL
DRAWINGS, SPECIFICATIONS AND
COPIES THEREOF ARE AND SHALL
REMAIN THE PROPERTY OF OFFICE
BASICS, INC. THEY ARE TO BE USED
ONLY IN CONNECTION WITH THIS PROJECT
AND ARE NOT TO BE REPRODUCED OR
OTHER PROJECT, NOR ARE THEY TO
BE ASSIGNED TO ANY THIRD PARTY
WITHOUT FIRST OBTAINING WRITTEN
PERMISSION AND CONSENT FROM
OFFICE BASICS, INC.

THE BARCLAY GROUP
ENLARGED FURNITURE
PLAN- OFFICES, SM CONF
RM, COLLABORTIVE AREA
AND OPEN AREA A
DATE: 02.18.26

SFA - Strategic Funding
Alternatives
Woodland Falls
Bldg 220 -
Suite 300

DRAWN BY: LMB
REVISIONS: 00
SCALE: XX" = 1'-0"



OFFICE BASICS, INC. EXPRESSLY RESERVES ITS COMMON LAW COPYRIGHT AND OTHER PROPERTY RIGHTS IN THESE DOCUMENTS. ALL DRAWINGS, SPECIFICATIONS AND COPIES THEREOF ARE AND SHALL REMAIN THE PROPERTY OF OFFICE BASICS, INC. THEY ARE TO BE USED ONLY IN CONNECTION WITH THIS PROJECT AND ARE NOT TO BE REPRODUCED OR USED FOR ANY OTHER PROJECT, NOR ARE THEY TO BE ASSIGNED TO ANY THIRD PARTY WITHOUT FIRST OBTAINING WRITTEN PERMISSION AND CONSENT FROM OFFICE BASICS, INC.

THE BARCLAY GROUP
SM CONF RM AND
COLLABORTIVE AREA
RENDERINGS

DATE: 02.18.26

SFA - Strategic Funding
Alternatives

Woodland Falls
Bldg 220 -
Suite 300

DRAWN BY: LMB
REVISIONS: 00

SCALE: XX" = 1'-0"



OFFICE BASICS, INC. EXPRESSLY RESERVES ITS COMMON LAW COPYRIGHT AND OTHER PROPERTY RIGHTS IN THESE DOCUMENTS. ALL DRAWINGS, SPECIFICATIONS AND COPIES THEREOF ARE AND SHALL REMAIN THE PROPERTY OF OFFICE BASICS, INC. THEY ARE TO BE USED ONLY IN CONNECTION WITH THIS PROJECT AND ARE NOT TO BE REPRODUCED OR USED FOR ANY OTHER PROJECT. ANY USE OF THESE DRAWINGS OR OTHER PROJECT INFORMATION WITHOUT THE WRITTEN PERMISSION AND CONSENT FROM OFFICE BASICS, INC.

THE BARCLAY GROUP
COLLABORTIVE AREA
RENDERINGS

DATE: 02.18.26

SFA - Strategic Funding
Alternatives

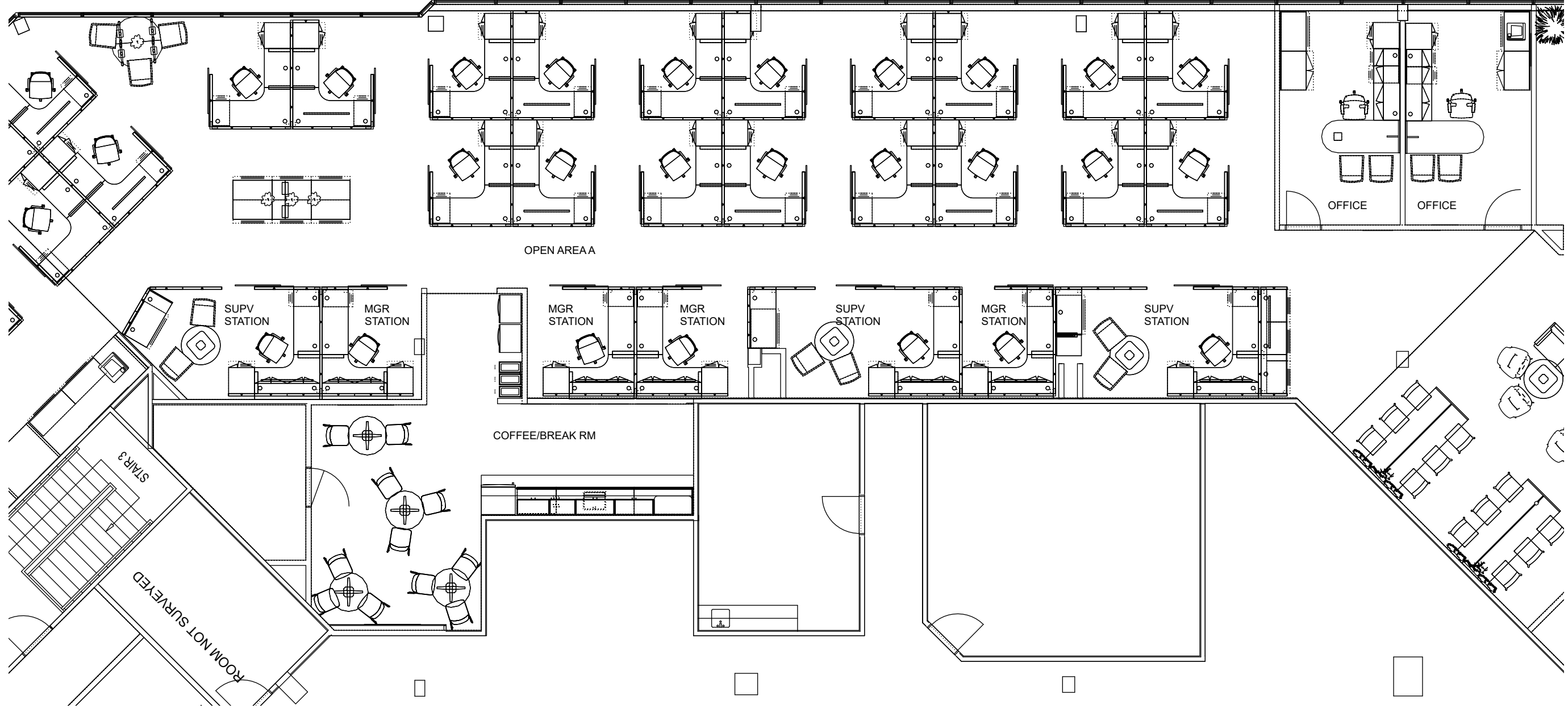
Woodland Falls
Bldg 220 -
Suite 300

DRAWN BY: LMB
REVISIONS: 00

SCALE: XX" = 1'-0"



22 CREEK CIRCLE, BOOTHWYN PA 19061
(P) 800-541-5855 (F) 866-225-4049



OFFICE BASICS, INC. EXPRESSLY RESERVES ITS COMMON LAW COPYRIGHT AND OTHER PROPERTY RIGHTS IN THESE DOCUMENTS. ALL DRAWINGS, SPECIFICATIONS AND COPIES THEREOF ARE AND SHALL REMAIN THE PROPERTY OF OFFICE BASICS, INC. THEY ARE TO BE USED ONLY IN CONNECTION WITH THIS PROJECT AND ARE NOT TO BE REPRODUCED OR USED FOR ANY OTHER PROJECT, NOR ARE THEY TO BE ASSIGNED TO ANY THIRD PARTY WITHOUT FIRST OBTAINING WRITTEN PERMISSION AND CONSENT FROM OFFICE BASICS, INC.

THE BARCLAY GROUP
ENLARGED FURNITURE
PLAN- OFFICES, SM CONF
RM, COLLABORATIVE AREA
AND OPEN AREA A

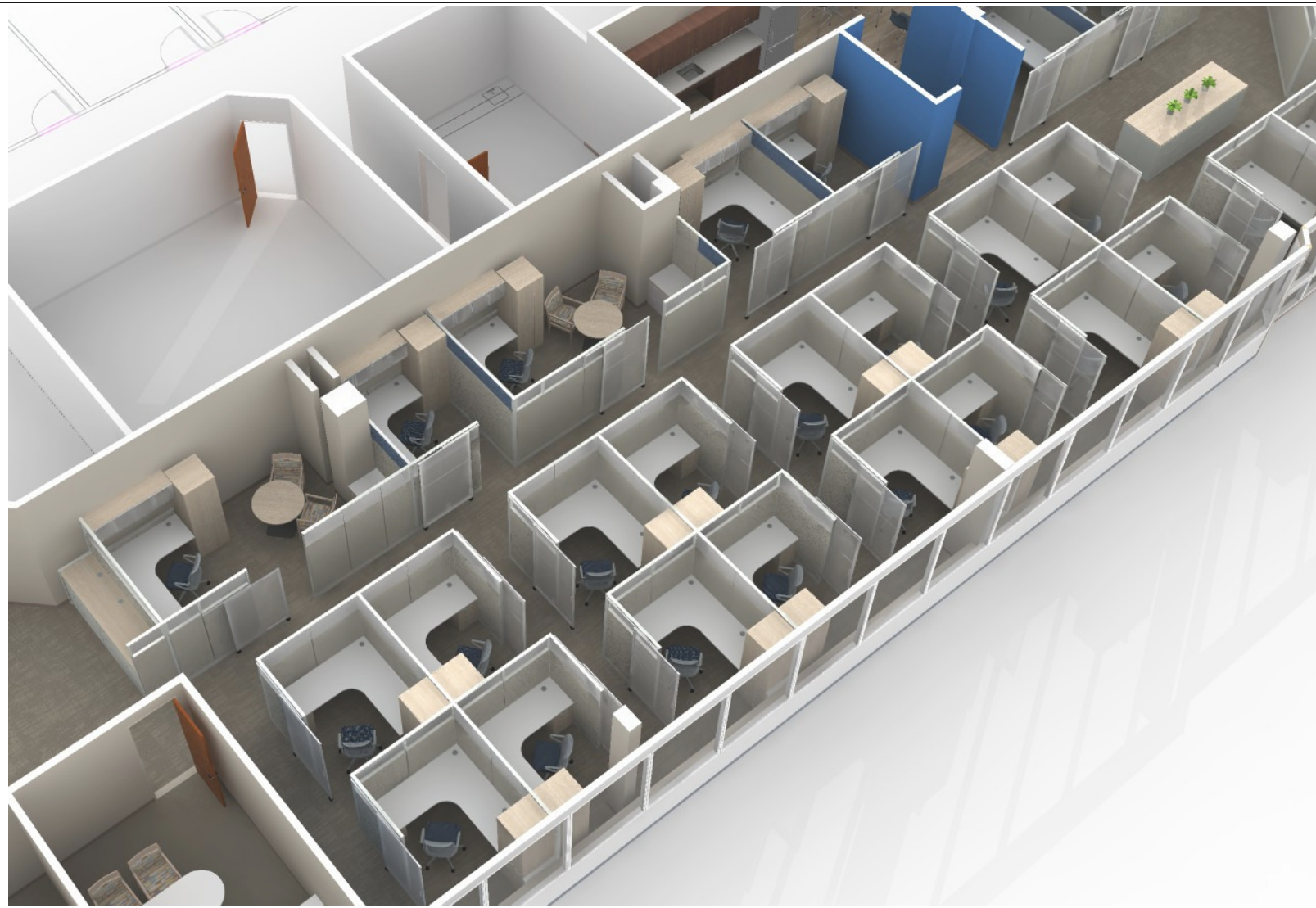
DATE: 02.18.26

SFA - Strategic Funding
Alternatives

Woodland Falls
Bldg 220 -
Suite 300

DRAWN BY: LMB
REVISIONS: 00

SCALE: XX" = 1'-0"



OFFICE BASICS, INC. EXPRESSLY RESERVES ITS COMMON LAW COPYRIGHT AND OTHER PROPERTY RIGHTS IN THESE DOCUMENTS. ALL DRAWINGS, SPECIFICATIONS AND COPIES THEREOF ARE AND SHALL REMAIN THE PROPERTY OF OFFICE BASICS, INC. THEY ARE TO BE USED ONLY IN CONNECTION WITH THIS PROJECT AND ARE NOT TO BE REPRODUCED OR USED FOR ANY OTHER PROJECT, NOR ARE THEY TO BE ASSIGNED TO ANY THIRD PARTY WITHOUT FIRST OBTAINING WRITTEN PERMISSION AND CONSENT FROM OFFICE BASICS, INC.

THE BARCLAY GROUP
OPEN AREA A
RENDERINGS

DATE: 02.18.26

SFA - Strategic Funding
Alternatives

Woodland Falls
Bldg 220 -
Suite 300

DRAWN BY: LMB
REVISIONS: 00

SCALE: XX" = 1'-0"



OFFICE BASICS, INC. EXPRESSLY RESERVES ITS COMMON LAW COPYRIGHT AND OTHER PROPERTY RIGHTS IN THESE DOCUMENTS. ALL DRAWINGS, SPECIFICATIONS AND COPIES THEREOF ARE AND SHALL REMAIN THE PROPERTY OF OFFICE BASICS, INC. THEY ARE TO BE USED ONLY IN CONNECTION WITH THIS PROJECT AND ARE NOT TO BE REPRODUCED OR USED IN ANY OTHER PROJECT WITHOUT FIRST OBTAINING WRITTEN PERMISSION AND CONSENT FROM OFFICE BASICS, INC.

**THE BARCLAY GROUP
FRONT OFFICES AND OPEN
AREA- RENDERINGS**

DATE: 02.18.26

**SFA - Strategic Funding
Alternatives**

Woodland Falls
Bldg 220 -
Suite 300

DRAWN BY: LMB
REVISIONS: 00

SCALE: XX" = 1'-0"





OFFICE BASICS, INC. EXPRESSLY RESERVES ITS COMMON LAW COPYRIGHT AND OTHER PROPERTY RIGHTS IN THESE DOCUMENTS. ALL DRAWINGS, SPECIFICATIONS AND COPIES THEREOF ARE AND SHALL REMAIN THE PROPERTY OF OFFICE BASICS, INC. THEY ARE TO BE USED ONLY IN CONNECTION WITH THIS PROJECT AND ARE NOT TO BE REPRODUCED OR USED IN ANY OTHER PROJECT WITHOUT FIRST OBTAINING WRITTEN PERMISSION AND CONSENT FROM OFFICE BASICS, INC.

THE BARCLAY GROUP
OPEN AREA AND SM
BREAK RM- RENDERINGS

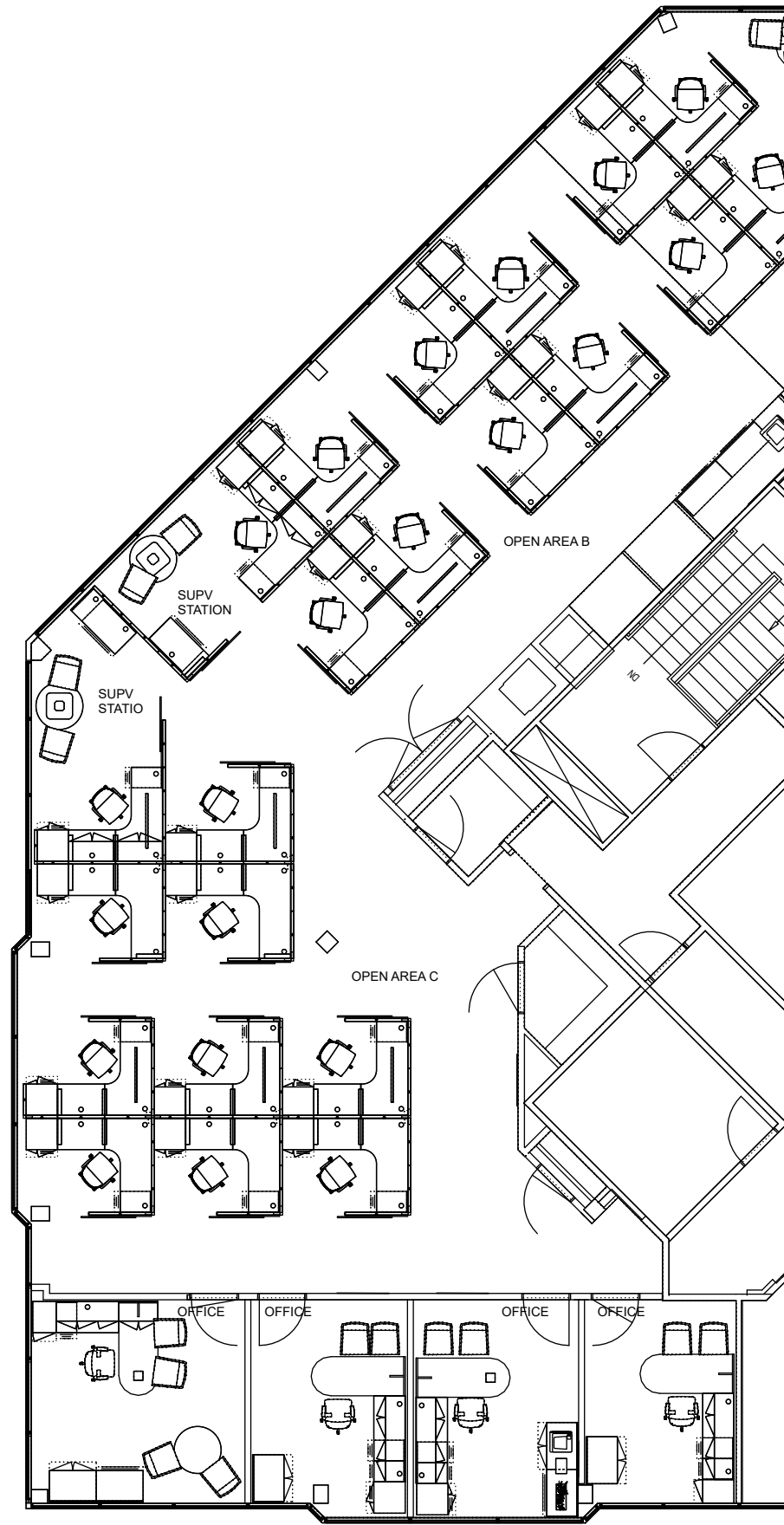
DATE: 02.18.26

SFA - Strategic Funding
Alternatives

Woodland Falls
Bldg 220 -
Suite 300

DRAWN BY: LMB
REVISIONS: 00

SCALE: XX" = 1'-0"



OFFICE BASICS, INC. EXPRESSLY RESERVES ITS COMMON LAW COPYRIGHT AND OTHER PROPERTY RIGHTS IN THESE DOCUMENTS. ALL DRAWINGS, SPECIFICATIONS AND COPIES THEREOF ARE AND SHALL REMAIN THE PROPERTY OF OFFICE BASICS, INC. THEY ARE TO BE USED ONLY IN CONNECTION WITH THIS PROJECT AND ARE NOT TO BE REPRODUCED OR USED FOR ANY OTHER PROJECT WITHOUT THE WRITTEN PERMISSION AND CONSENT FROM OFFICE BASICS, INC.

THE BARCLAY GROUP
ENLARGED FURNITURE
PLAN & RENDERINGS-
OPEN AREA B & C AND
BACK OFFICES

DATE: 02.18.26

**SFA - Strategic Funding
Alternatives**

Woodland Falls
Bldg 220 -
Suite 300

DRAWN BY: LMB
REVISIONS: 00

SCALE: XX" = 1'-0"



22 CREEK CIRCLE, BOOTHWYN PA 19061
(P) 800-541-5855 (F) 866-225-4049



OFFICE BASICS, INC. EXPRESSLY RESERVES ITS COMMON LAW COPYRIGHT AND OTHER PROPERTY RIGHTS IN THESE DOCUMENTS. ALL DRAWINGS, SPECIFICATIONS AND COPIES THEREOF ARE AND SHALL REMAIN THE PROPERTY OF OFFICE BASICS, INC. THEY ARE TO BE USED ONLY IN CONNECTION WITH THIS PROJECT AND ARE NOT TO BE REPRODUCED OR USED FOR ANY OTHER PROJECT. NO PART OF THIS PROJECT IS TO BE ASSIGNED TO ANY THIRD PARTY WITHOUT FIRST OBTAINING WRITTEN PERMISSION AND CONSENT FROM OFFICE BASICS, INC.

THE BARCLAY GROUP
BACK OFFICES -
RENDERINGS

DATE: 02.18.26

SFA - Strategic Funding
Alternatives

Woodland Falls
Bldg 220 -
Suite 300

DRAWN BY: LMB
REVISIONS: 00

SCALE: XX" = 1'-0"



22 CREEK CIRCLE, BOOTHWYN PA 19061
(P) 800-541-5855 (F) 866-225-4049