

FOR LEASE

 Baltimore City, Maryland

SETON BUSINESS PARK

4601 - 4701 MOUNT HOPE DRIVE | BALTIMORE, MARYLAND, 21215

AVAILABLE

Office: 5,500 - 16650 sf

Warehouse: 2,200 sf

RENTAL RATE

\$10.00/sf, NNN

PARKING

180 Spaces

PROPERTY USE

Office or Medical

NEARBY AMENITIES

Dining, Retail, Banking, Personal Services

HIGHLIGHTS

- ▶ Located in close proximity to Sinai Hospital, I-695, and easy access to Rogers Metro Station
- ▶ One loading door with 5,000 lb. scissor lift
- ▶ Excellent window line
- ▶ High parking ratio
- ▶ Professionally managed



BROKER BONUS - \$1/SF!*

*NEW LEASE EXECUTED BY 1/31/17 - MIN. 3 YEAR TERM



Bill Whitty

☎ 410.494.4862

✉ bwhitty@mackenziecommercial.com

Joe Bradley

☎ 410.494.4892

✉ jbradley@mackenziecommercial.com

Matt Mueller

☎ 410.494.6658

✉ mmueller@mackenziecommercial.com

Meghan Roy

☎ 410.494.4846

✉ mroy@mackenziecommercial.com

Henson Ford

☎ 410.494.6657

✉ hford@mackenziecommercial.com

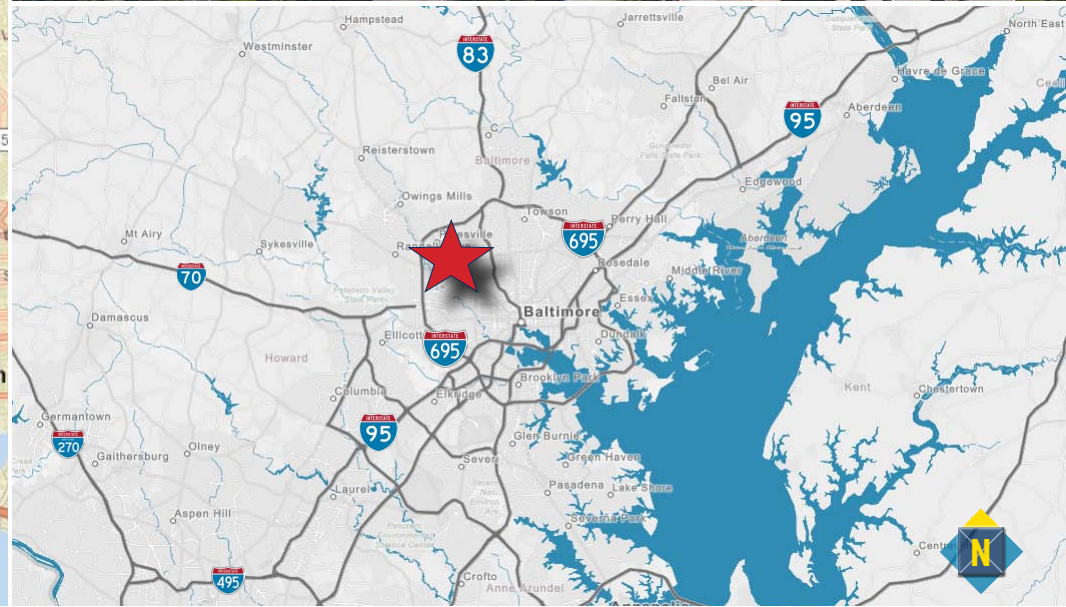
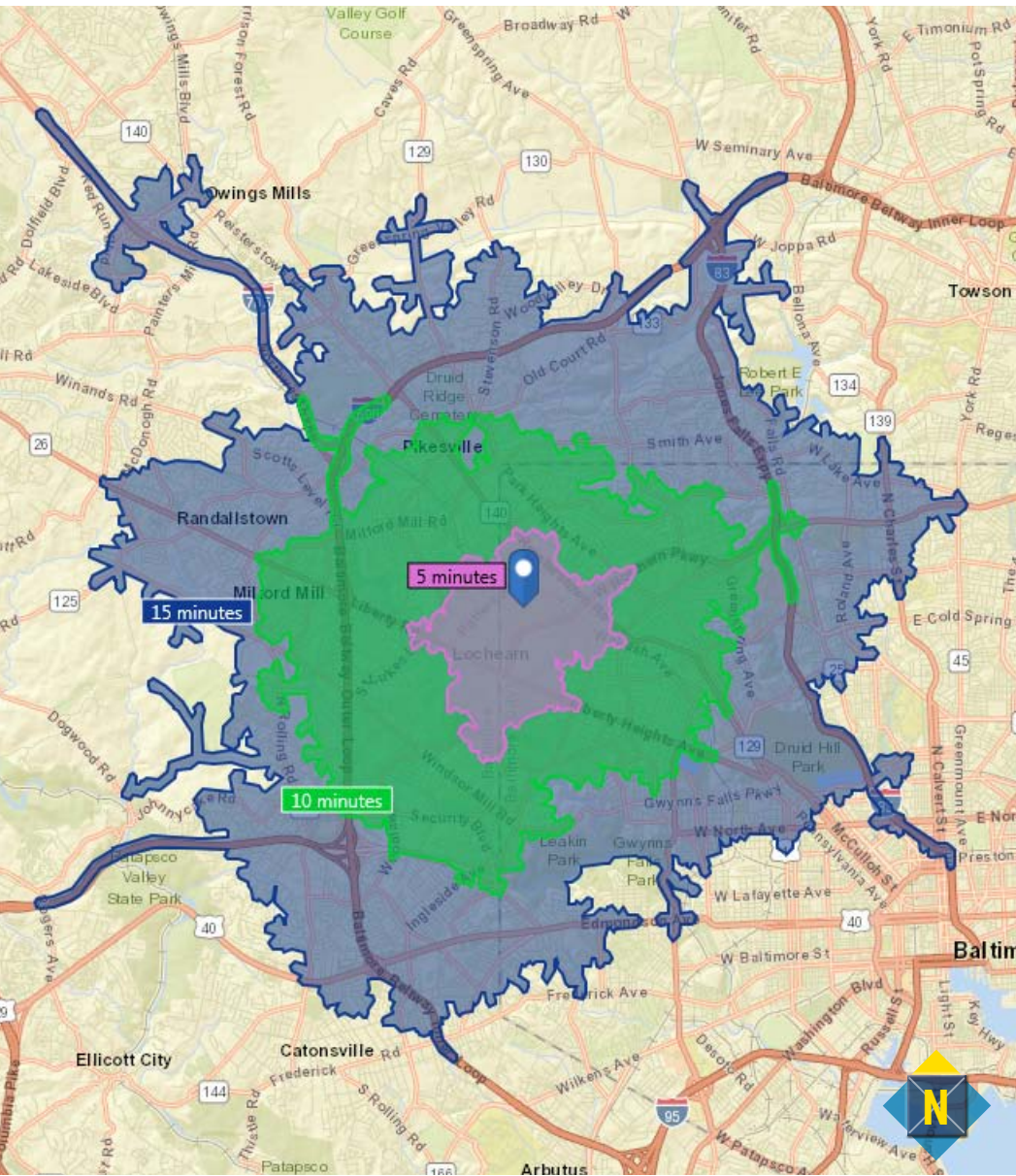
Mackenzie Commercial Real Estate Services, LLC • 410-821-8585 • 2328 W. Joppa Road, Suite 200 | Lutherville-Timonium, Maryland 21093 • www.MACKENZIECOMMERCIAL.com

FOR LEASE

Baltimore City, Maryland

LOCATION/BIRDSEYE/DRIVE TIMES

SETON BUSINESS PARK | 4601 - 4701 MOUNT HOPE DRIVE | BALTIMORE, MARYLAND, 21215



MACKENZIE

COMMERCIAL REAL ESTATE SERVICES, LLC

Bill Whitty

410.494.4862

bwhitty@mackenziecommercial.com

Joe Bradley

410.494.4892

jbradley@mackenziecommercial.com

Matt Mueller

410.494.6658

mmueller@mackenziecommercial.com

Meghan Roy

410.494.4846

mroy@mackenziecommercial.com

Henson Ford

410.494.6657

hford@mackenziecommercial.com

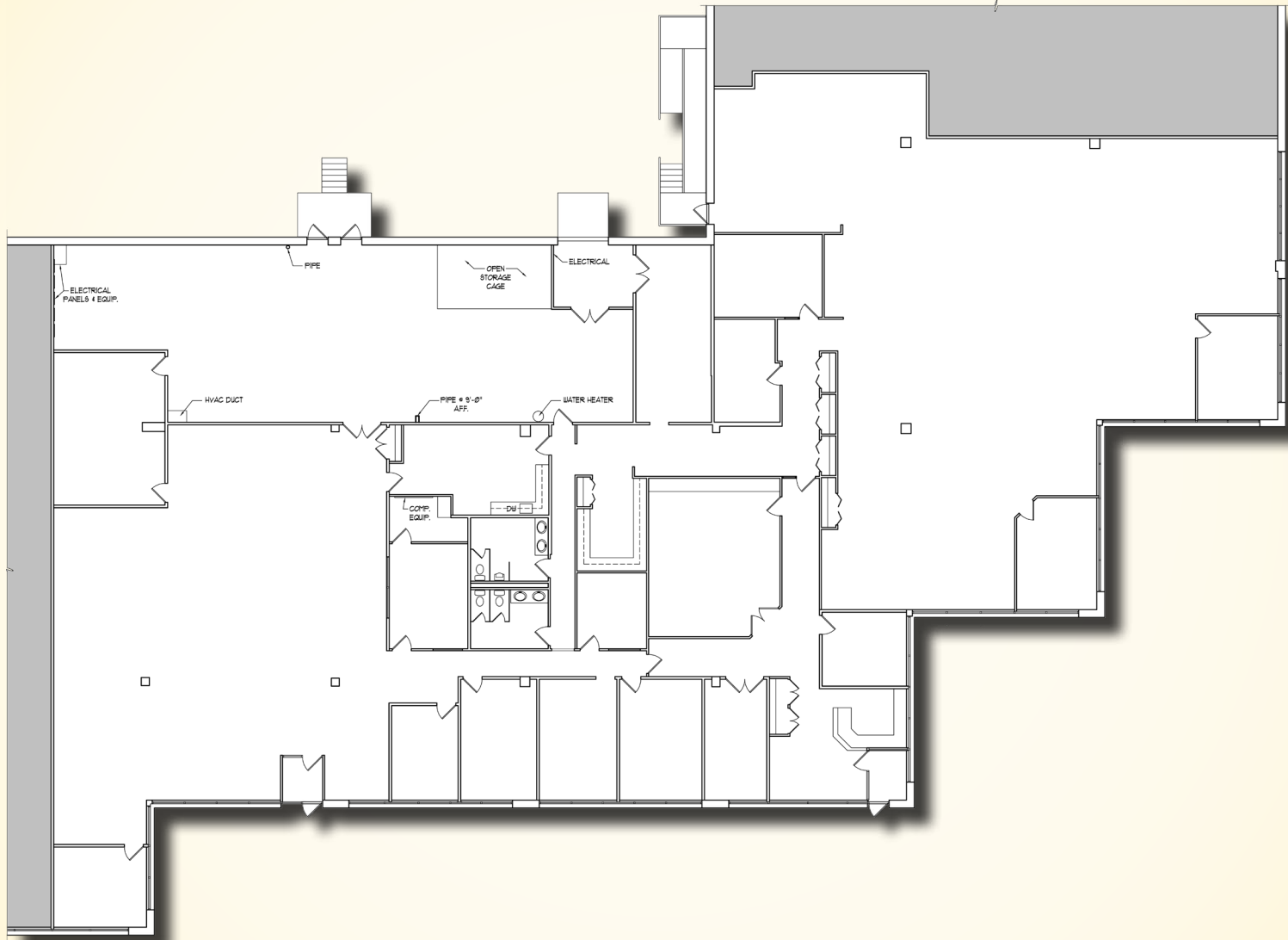
Mackenzie Commercial Real Estate Services, LLC • 410-821-8585 • 2328 W. Joppa Road, Suite 200 | Lutherville-Timonium, Maryland 21093 • www.MACKENZIECOMMERCIAL.com

FOR LEASE

Baltimore City, Maryland

FLOOR PLAN

SETON BUSINESS PARK | 4601 - 4701 MOUNT HOPE DRIVE | BALTIMORE, MARYLAND, 21215



Bill Whitty

☎ 410.494.4862

✉ bwhitty@mackenziecommercial.com

Joe Bradley

☎ 410.494.4892

✉ jbradley@mackenziecommercial.com

Matt Mueller

☎ 410.494.6658

✉ mmueller@mackenziecommercial.com

Meghan Roy

☎ 410.494.4846

✉ mroy@mackenziecommercial.com

Henson Ford

☎ 410.494.6657

✉ hford@mackenziecommercial.com