

1134

CRANE STREET
MENLO PARK, CALIFORNIA

SUITE 200 →

For Lease
NEWARK

1134

1134

CHERIE WITTRY

650.688.8523

cherie.wittry@nmrk.com

CA RE License #00863251

MATT WINTERS

650.248.7797

matt@raise.work

CA RE License #01405284

2nd Floor : ±3,000 SF Available

FOR LEASE

NEWMARK

RAISE

1134

CRANE STREET
MENLO PARK, CALIFORNIA

Second Floor Suite 200: ±3,000 SF

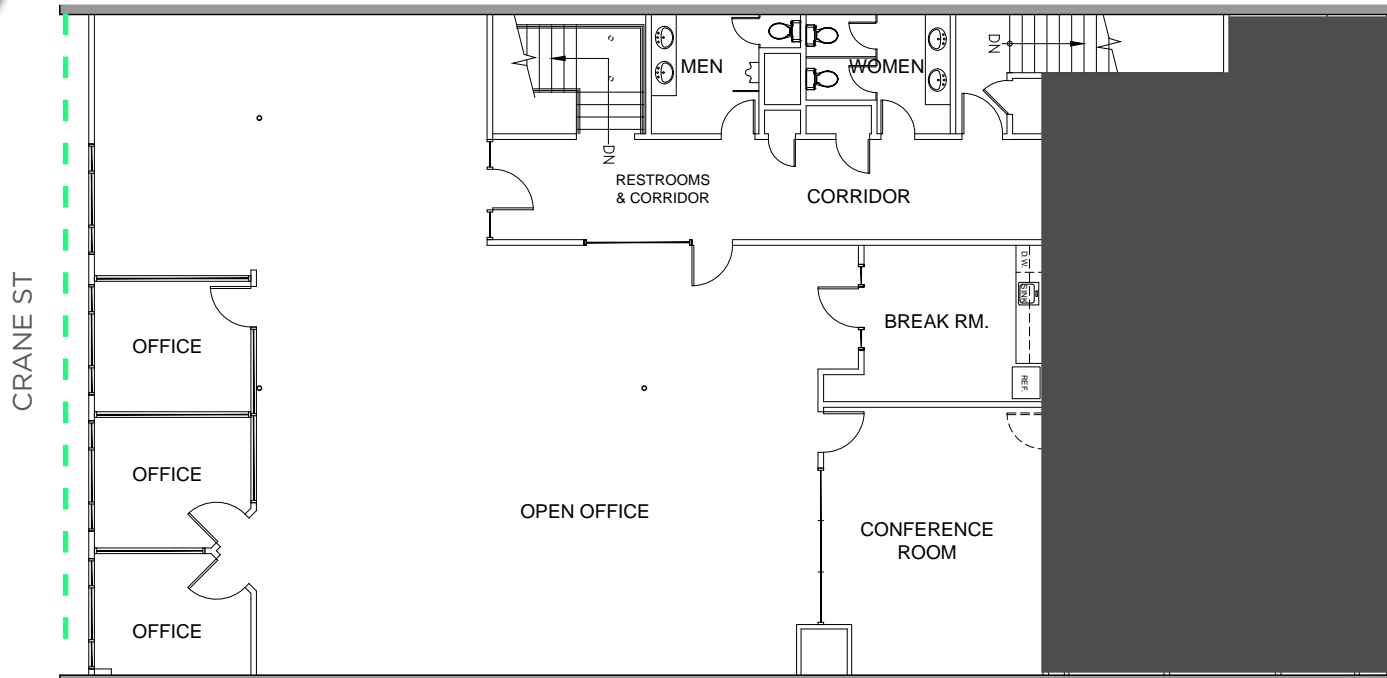
- Available Now
- 3 Glass Window Offices
- Large Conference Room
- Kitchen/Open Work Area



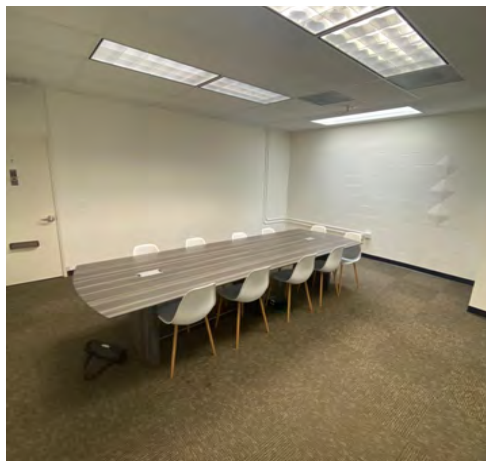
- High Identity/Building Signage
- Perfect for Professional Office or Tech Office Users
- Located in the Heart of Downtown Menlo Park
- One Block from Santa Cruz Avenue
- City Parking Lots Surround the Building
- Walking Distance to Caltrain
- Low NNN Expenses
- Available Now
- Call to Tour



Suite 200: ±3,000 SF



--- Windowline



DOWNTOWN MENLO PARK AMENITIES

1. Celia's
2. Gombei Japanese
3. Oak + Violet
4. Fey
5. Naomi Sushi
6. Round Table Pizza
7. McDonald's
8. Sultana Mediterranean
9. Stacks
10. Cafe Borrone
11. Jeffrey's Hamburgers
12. Cold Stone Creamery
13. Cafe del Sol
14. Left Bank
15. Susie Cakes
16. Walgreens
17. Starbucks
18. Menlo Park Hardware
19. Juban Yakinuki House
20. Bank of the West
21. Trader Joe's
22. Le Boulanger
23. Shiok! Singapore Kitchen
24. The Refuge
25. Ristorante Carpaccio
26. Ann's Coffee Shop
27. Wells Fargo Bank
28. Mademoiselle Colette
29. Galata Bistro Mediterranean Grill
30. Fleet Feet
31. Amici's East Coast Pizzeria
32. Draeger's Market

1134
CRANE STREET



CHERIE WITTRY 650.688.8523 cherie.wittry@nmrk.com CA RE License #0086325
MATT WINTERS 650.248.7797 matt@raise.work CA RE License #01405284
258 High Street, Palo Alto, CA 94301

The distributor of this communication is performing acts for which a real estate license is required. The information contained herein has been obtained from sources deemed reliable but has not been verified and no guarantee, warranty or representation, either express or implied, is made with respect to such information. Terms of sale or lease and availability are subject to change or withdrawal without notice. 17-0784.06/23