



# Sonoma Marketplace

201 W. Napa Street | Sonoma, California

## NOW LEASING

<u>SPACE#</u>	<u>SF</u>	<u>RENT</u>	<u>NNN</u>
7	1,211	Call	\$8.90

### For information, contact:

**Andy Armstrong**  
Senior Leasing Manager  
Direct: 415-689-5357  
[aarmstrong@crosspointrealty.com](mailto:aarmstrong@crosspointrealty.com)  
CA DRE #01860367

**Carter Hemming**  
[chemming@crosspointrealty.com](mailto:chemming@crosspointrealty.com)  
CA DRE #01123464

**Kathy DeOchoa**  
[kdeochoa@crosspointrealty.com](mailto:kdeochoa@crosspointrealty.com)  
CA DRE #01871554

Phone: 415-288-6888  
Fax: 415-288-6877  
Crosspoint Realty Services, Inc.  
20211 Patio Drive, Suite 145  
Castro Valley, CA 94546  
[www.crosspointrealty.com](http://www.crosspointrealty.com)



# Sonoma Marketplace

201 W. Napa Street | Sonoma, California

## SITE PLAN

Contact: Andy Armstrong CA DRE# 01860367, [aarmstrong@crosspointrealty.com](mailto:aarmstrong@crosspointrealty.com); Carter Hemming CA DRE#01123464, [chemming@crosspointrealty.com](mailto:chemming@crosspointrealty.com); Kathy DeOchoa CA DRE#01871554, [kdechoa@crosspointrealty.com](mailto:kdechoa@crosspointrealty.com); Phone 415.288.6888

Space	Tenant
01-02	The Toy Shop
03	Sonoma Optometry
04	Filigree Jewelry
05	Coffee Shop – <i>COMING SOON</i>
06	Scoops Ice Cream
07	<b>AVAILABLE</b>
08	Sourdough and Co.
09	Bangkok 9 Thai Restaurant
10	Marketplace Haircutters
11-13	Whole Foods
14	McCaulou's Kids
15	Pure Barre
16	Fine Line Art Supply
17	Holly Hock
18	McCaulou's
19	McCaulou's Gifts
21	Home Grown Bagels
22	Studio Sun & Beauty
23	Nail Pro
24	Tip Top Cleaners
25	Launderland
26	Happy Garden Restaurant
27	Sweet Straw
28	A New Image Salon
29	CVS
30-31	Round Table Pizza
32	Valley of the Moon Skate Shop
33	BMO Bank
34	Black Bear Diner





# Sonoma Marketplace

201 W. Napa Street | Sonoma, California

## MARKET AREA

### Sonoma Marketplace Tenants Include:

Whole Foods  
CVS

McCaulou's Department Store

BMO Bank	Homegrown Bagel
Black Bear Diner	McCaulou's Kids
Filigree Jewelers	Pure Barre
Holly Hock	Round Table Pizza

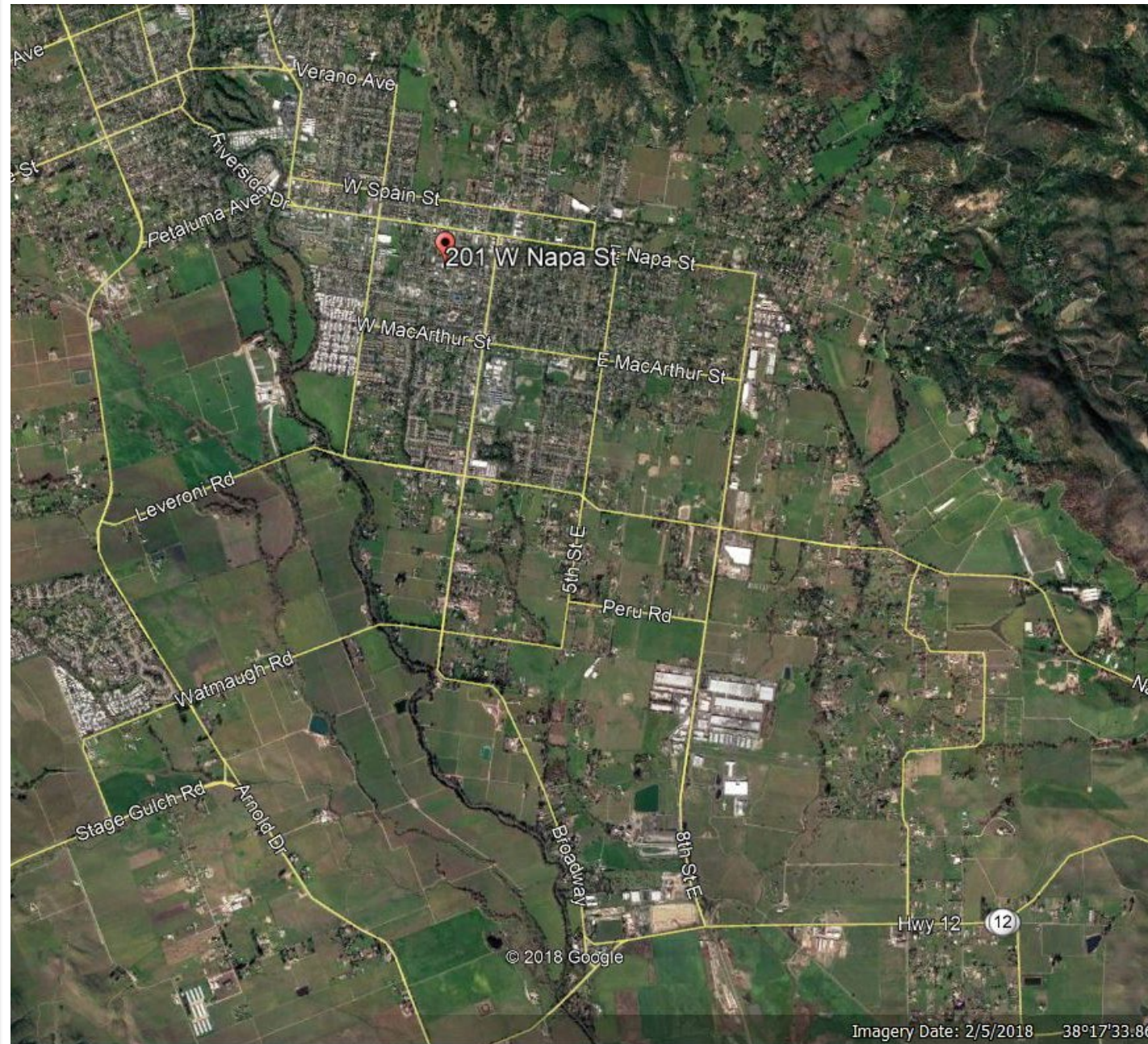
### For information, contact:

**Andy Armstrong**  
Senior Leasing Manager  
Direct: 415-689-5357  
[aarmstrong@crosspointrealty.com](mailto:aarmstrong@crosspointrealty.com)  
CA DRE #01860367

**Carter Hemming**  
[chemming@crosspointrealty.com](mailto:chemming@crosspointrealty.com)  
CA DRE #01123464

**Kathy DeOchoa**  
[kdechoa@crosspointrealty.com](mailto:kdechoa@crosspointrealty.com)  
CA DRE #01871554

Phone: 415-288-6888  
Fax: 415-288-6877  
Crosspoint Realty Services, Inc.  
20211 Patio Drive, Suite 145  
Castro Valley, CA 94546  
[www.crosspointrealty.com](http://www.crosspointrealty.com)



# Sonoma Marketplace

201 W. Napa Street | Sonoma, California

## MAP & INFORMATION

### Description:

Sonoma Marketplace is the community dominant shopping center anchored by Whole Foods, CVS, and McCaulou's.

### Location:

Intersection of Highway 12 and Second Avenue in the historic town of Sonoma, California.

### For information, contact:

**Andy Armstrong**

Senior Leasing Manager

Direct: 415-689-5357

[aarmstrong@crosspointrealty.com](mailto:aarmstrong@crosspointrealty.com)

CA DRE #01860367

**Carter Hemming**

[chemming@crosspointrealty.com](mailto:chemming@crosspointrealty.com)

CA DRE #01123464

**Kathy DeOchoa**

[kdeochoa@crosspointrealty.com](mailto:kdeochoa@crosspointrealty.com)

CA DRE #01871554

Phone: 415-288-6888

Fax: 415-288-6877

Crosspoint Realty Services, Inc.

20211 Patio Drive, Suite 145

Castro Valley, CA 94546

[www.crosspointrealty.com](http://www.crosspointrealty.com)

