



**188 MAIN STREET  
+ 9 STATE CIRCLE  
ANNAPOLIS, MARYLAND**

Office Suites for Lease in a Landmark Location



# 188 MAIN STREET + 9 STATE CIRCLE

Office Suites for Lease in a Landmark Location

Located on Main Street and State Circle directly across from the Maryland State House, 188 Main Street/9 State Circle is a rare and highly sought-after property. The building features diverse retail storefronts, restaurants, and professional office suites, with access from both Main Street and State Circle. With nearly 60 feet of direct frontage, this property receives visibility and foot traffic from the 4 million annual visitors to downtown Annapolis.

## 360° VIRTUAL TOURS

SUITE LL2



SUITE 302



THOMAS PARK COMMERCIAL



**MASON POPHAM**

mason.popham@thomas-park.com

410-280-0220



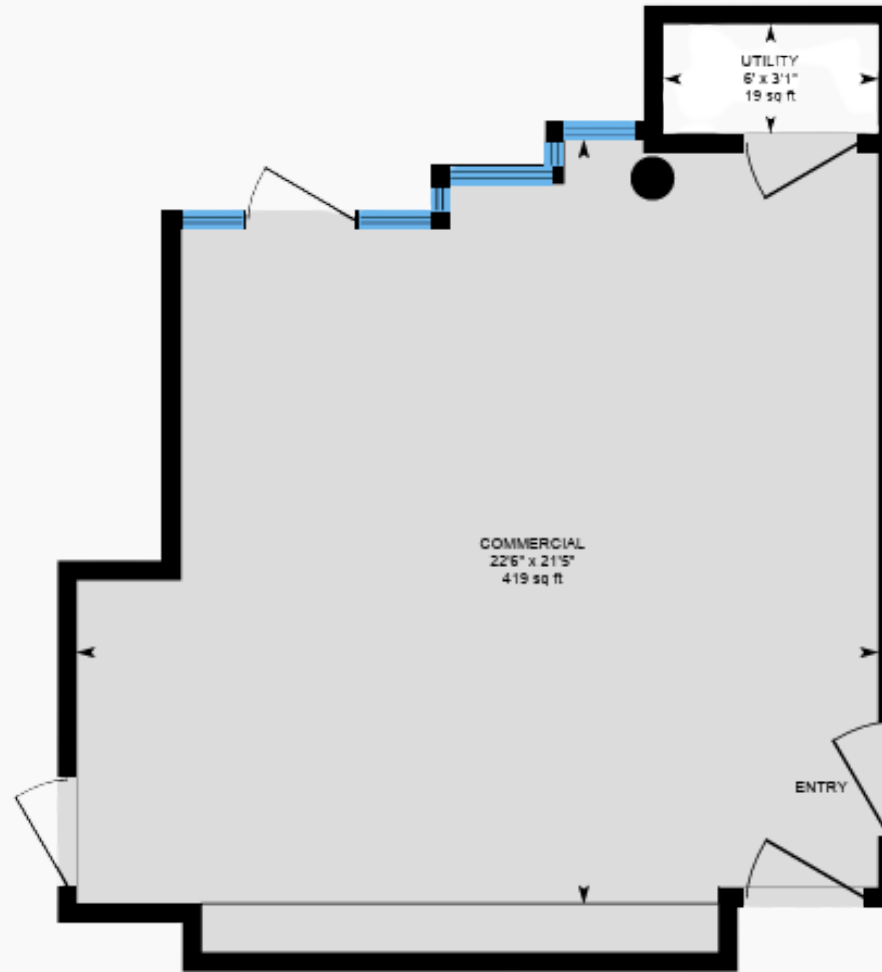
# SUITE 302

1,642 SF

 **VIRTUAL TOURS**

SUITE 302





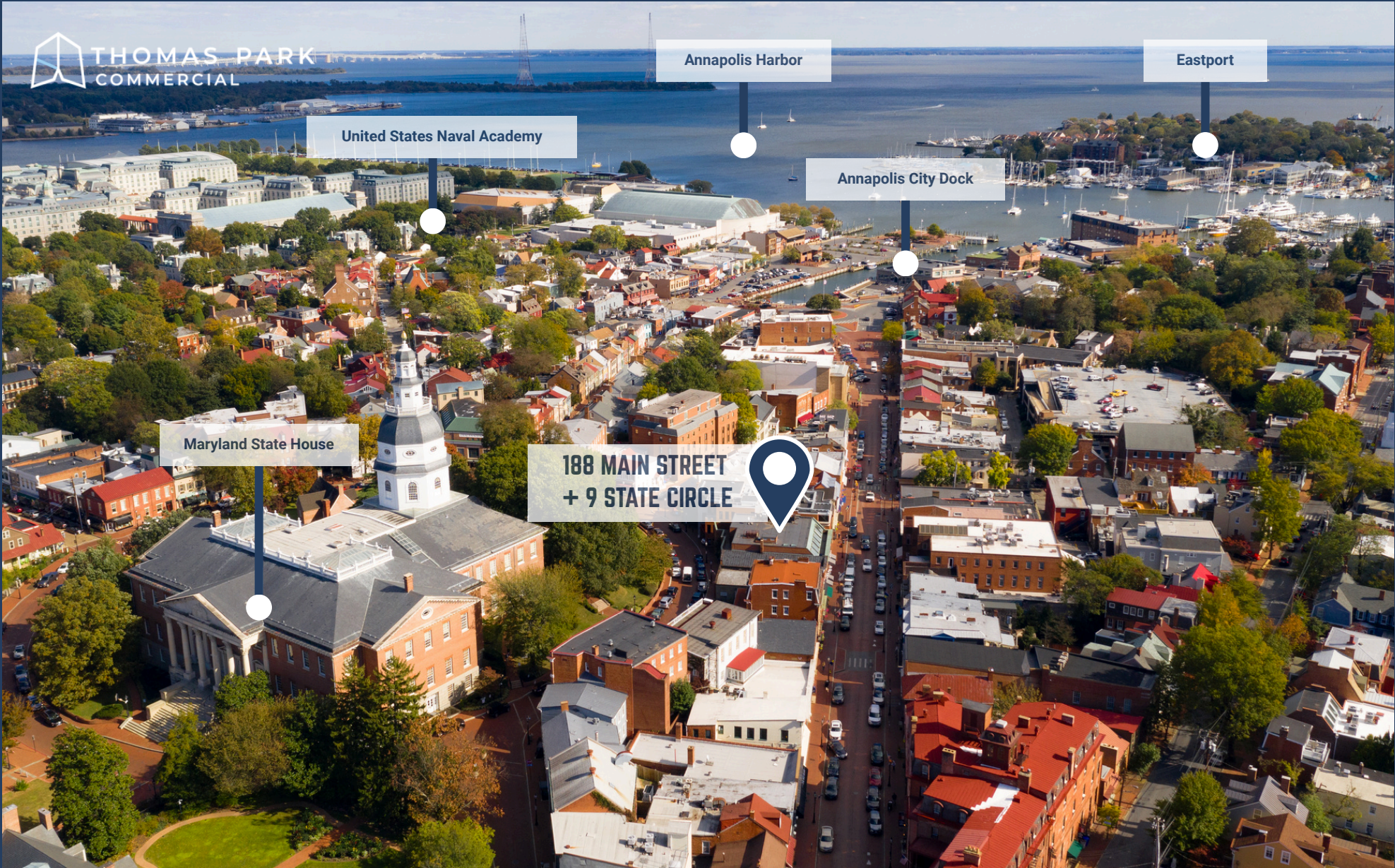
# SUITE LL2

565 SF

 **VIRTUAL TOURS**

SUITE LL2





United States Naval Academy

Annapolis Harbor

Eastport

Annapolis City Dock

Maryland State House

**188 MAIN STREET  
+ 9 STATE CIRCLE**



# 188 MAIN STREET + 9 STATE CIRCLE

Office Suites for Lease in a Landmark Location



# YOUR COMMERCIAL REAL ESTATE PARTNER

*Thomas Park is a full-service commercial real estate firm offering alternative investment strategies and third-party commercial real estate services.*



## **MASON POPHAM**

mason.popham@thomas-park.com

www.thomas-park.com

410-280-0220



## **THOMAS PARK COMMERCIAL**

Thomas Park Commercial specializes in leasing and investment brokerage across all commercial asset classes throughout Maryland.



## **THOMAS PARK INVESTMENTS**

TPI is one of the fastest growing private equity real estate investment firms on the East Coast focused exclusively on healthcare real estate.



## **THOMAS PARK MANAGEMENT**

TPM is a best in class property management firm with a 30+ year track record in the commercial real estate industry.



## **THOMAS PARK DESIGN**

TPD is an innovative interior design firm specializing in healthcare, medical office, commercial office, and retail.



## **THOMAS PARK CONSTRUCTION**

TPC focuses on commercial construction within the healthcare, retail, office and industrial sectors.