

# 290 Shuter Street

**First Floor: 2,418 sq. ft.**

**Second Floor: 2,499 sq. ft.**

**Third Floor: 2,554 sq. ft.**



**KATE CAMENZULI\***

Vice President  
+1 416 815 2380  
kate.camenzuli@cbre.com

**KELLY MOORE**

Sales Representative  
+1 647 228 5030  
kelly.moore1@cbre.com

\*Sales Representative

**CBRE**

290 Shuter Street

RECEPTION

Demographics: 1km radius

71,685

Total population 2025

35

Median age

\$120,557

Ave household income

Discover exceptional value in this medical/office building consisting of approximately 7,471 sq. ft.

Lease the whole building or one floor. Turnkey medical offices and pharmacy on the 2nd floor.

Other ideal uses include: wellness services (massage & physical therapy), rehabilitation, lab testing, ultrasound, x-ray, as well as professional services, education or training-based uses.

PHARMACY

CBRE

## FLOOR PLAN

# 1st Floor

2,418 sq. ft.

Net Rent

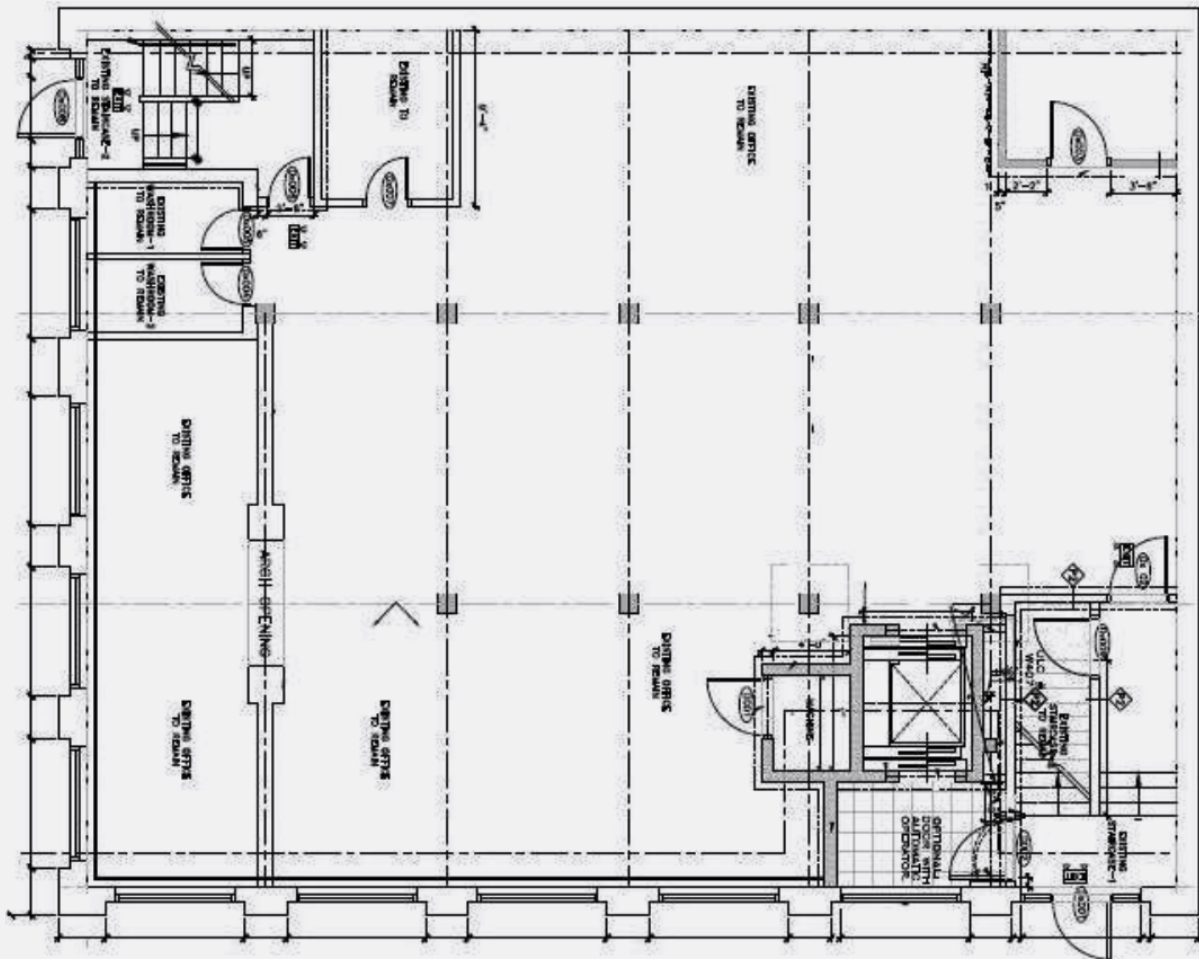
Contact Listing Agents

Additional Rent

\$9.78 per sq. ft. (2026 est.)

Available

Immediately



290 Shuter Street

# 2nd Floor

Turn Key Medical Space  
& Built Out Pharmacy

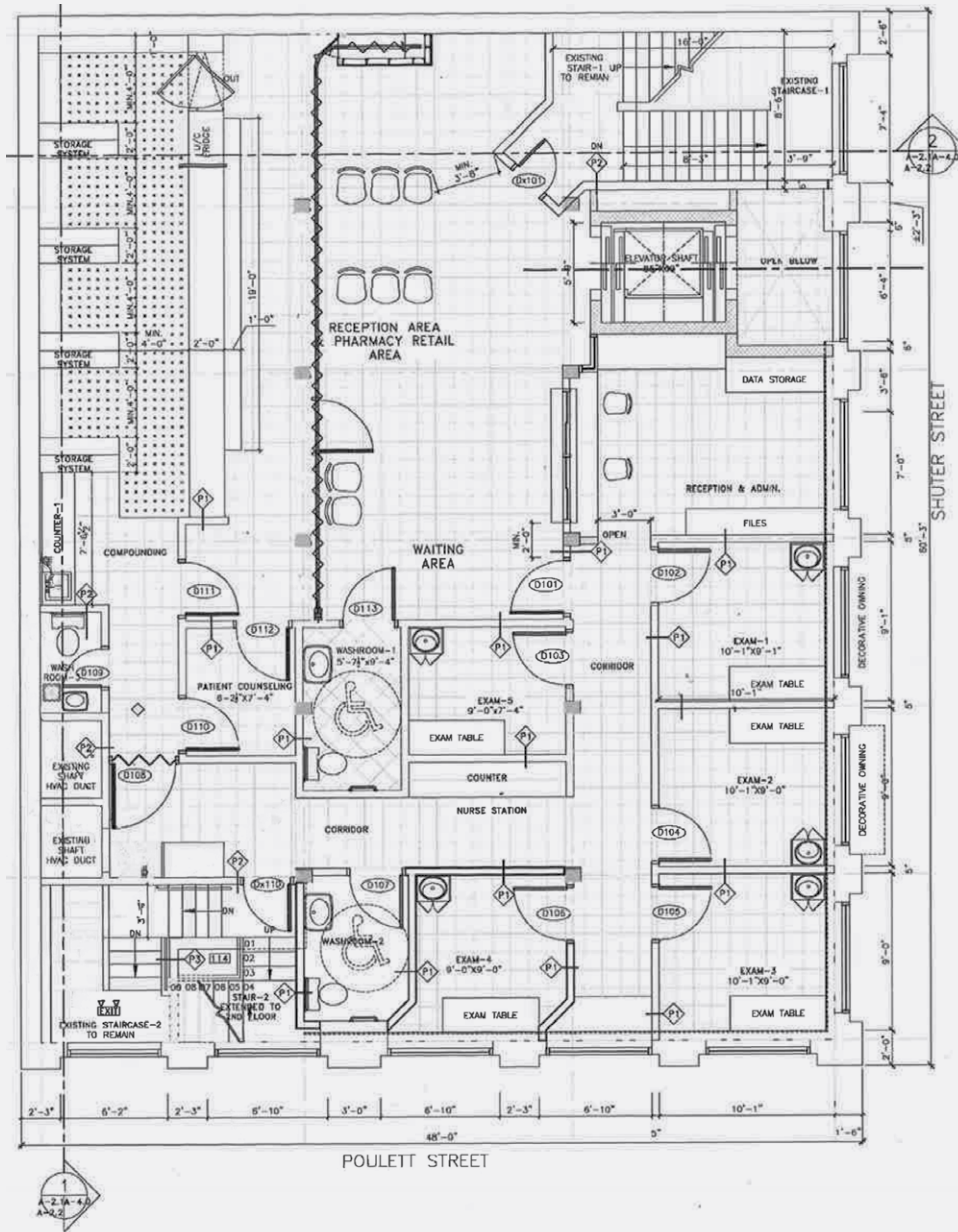


## FLOOR PLAN

# 2nd Floor

2,499 sq. ft.

Net Rent	Contact Listing Agents
Additional Rent	\$9.78 per sq. ft. (2026 est.)
Available	Immediately

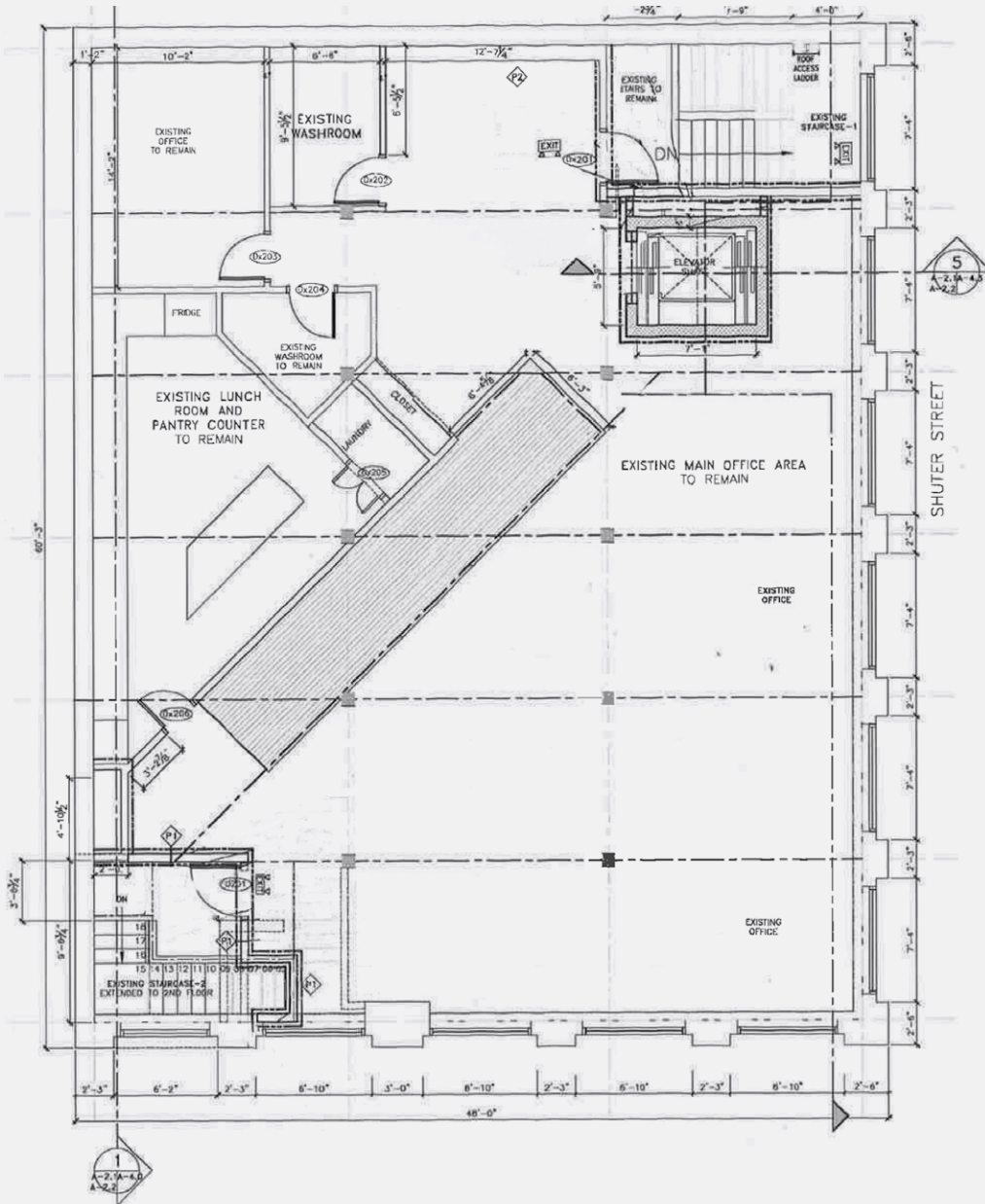


## FLOOR PLAN

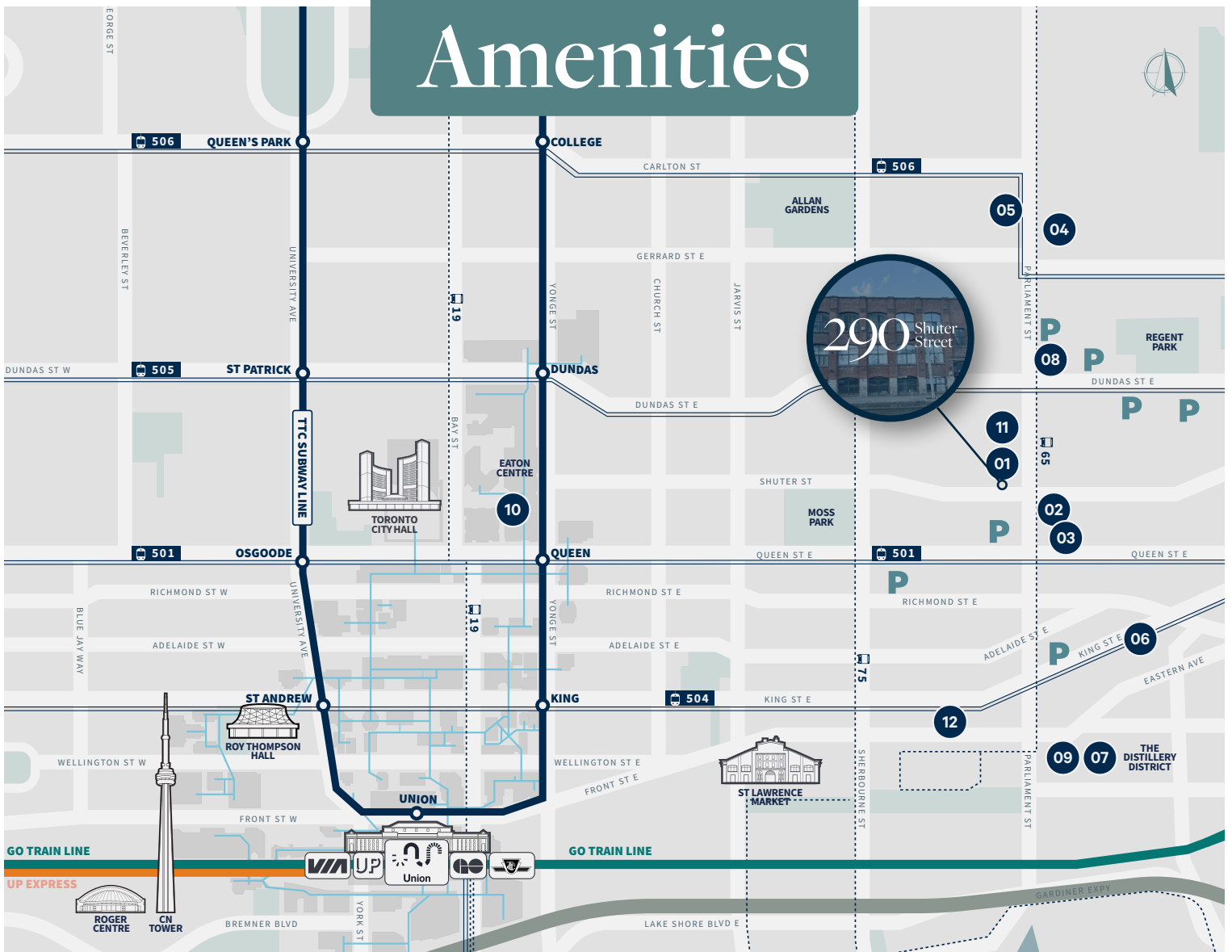
# 3rd Floor

2,554 sq. ft.

Net Rent	Contact Listing Agents
Additional Rent	\$9.78 per sq. ft. (2026 est.)
Available	Immediately



# Amenities

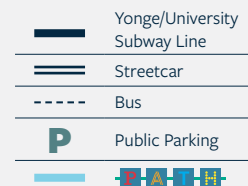


## Food & Drinks

- 01.** Wanaag Restaurant  
Premium Shawarma  
King Place BBQ & Curry  
Kreme Ice Cream  
Hyderabad Express
- 02.** Captain Cookes Fish & Chips  
Peking Express
- 03.** Hangout Street  
Poutine Hub  
The Bullger Burger  
Habibz Corner  
Princess Kitchen  
Dejavu Restaurant  
Viet Garden  
Decoy Bar  
King Solomon and Queen of Sheba  
Roozmoon Cafe
- 04.** Hakka N' Jerk  
New Town Restaurant  
Urban Thai  
Blondies Pizza  
Poutine Delight
- 05.** Gushi Japanese  
The Golden Pigeon Beerhall  
Chennai Masala Cafe  
Merkato Eri-Ethio Cafe  
Saigon Pai  
House on Parliament  
Bangla Cafe  
Mikaku Udor Bar  
Stout Irish Pub
- 06.** Terroni Sud Forno  
Mercury Espresso  
Gusto 501  
Old Town Bodega  
Henrietta Lane
- 07.** Sweetie Pie  
Soma Chocolatemaker  
Brick Street Bakery  
Mill Street Brewpub Distillery  
Cluny Bistro  
Old Flame Brewing Co.  
SpirtHouse Toronto  
Madrina Bar  
Boku Japanese Eats + Drinks

## Fashion & Shopping

- 8.** FreshCo
- 9.** The Sport Gallery  
Red Canoe  
Hoi Bo  
Skin Treats  
Blackbird Vintage Finds  
Peace Collective  
Corktown Designs  
Queen's Trunk  
Crimson & Clover  
John Fluevog Shoes  
Hatley Boutique  
Lip Lab  
Craft Ontario Distillery Shop  
Grace Loves Lace  
The Ordinary  
Monte & Coe
- 10.** Eaton Centre
- 11.** Kabul Farm Supermarket  
Dire Mini Mart
- 12.** Boffi Furniture  
Italinteriors Furniture  
Poliform Toronto  
BMO Bank  
CIBC Bank  
Dollarama  
NoFrills  
RBC Bank  
LCBO  
National Bank  
Hanok Tattoo Studio  
Blind to Go



# 290 Shuter Street

**KATE CAMENZULI\***

Vice President  
+1 416 815 2380  
kate.camenzuli@cbre.com

**KELLY MOORE**

Sales Representative  
+1 647 228 5030  
kelly.moore1@cbre.com

\*Sales Representative

## CBRE

CBRE Limited, Real Estate Brokerage, 145 King Street West, Suite 1100, Toronto, ON M5H 1J8, T +1 416.362.2244 | [www.cbre.ca](http://www.cbre.ca)

This disclaimer shall apply to CBRE Limited, Real Estate Brokerage, and to all other divisions of the Corporation, to include all employees and independent contractors ("CBRE"). The information set out herein, including, without limitation, any projections, images, opinions, assumptions and estimates obtained from third parties (the "Information") has not been verified by CBRE, and CBRE does not represent, warrant or guarantee the accuracy, correctness and completeness of the Information. CBRE does not accept or assume any responsibility or liability, direct or consequential, for the information or the recipient's reliance upon the Information. The recipient of the Information should take such steps as the recipient may deem necessary to verify the Information prior to placing any reliance upon the Information. The Information may change and any property described in the Information may be withdrawn from the market at any time without notice or obligation to the recipient from CBRE. CBRE and the CBRE logo are the service marks of CBRE Limited and/or its affiliated or related companies in other countries. All other marks displayed on this document are the property of their respective owners. All Rights Reserved.