

**26940 ALISO VIEJO PKWY
ALISO VIEJO, CALIFORNIA**

Contact For More Information:

Rob Rader

President
949.500.9391
rob.rader@TopsideRE.com
License # 01373045

Mac Mace

Director
949.922.9889
mac.mace@TopsideRE.com
License # 01956808

FOR LEASE

- Two-story office building
- Exceptional views
- Efficient layouts
- Ample, free parking
- Easy access to 73 toll road
- Centrally located in Aliso Viejo
- Proactive and responsive landlord
- Available immediately

DISCLAIMER

© 2020 Topside Real Estate. All rights reserved. The information contained herein has been obtained from sources we deem reliable. While we have no reason to doubt its accuracy, we do not guarantee it.

Rate TBD

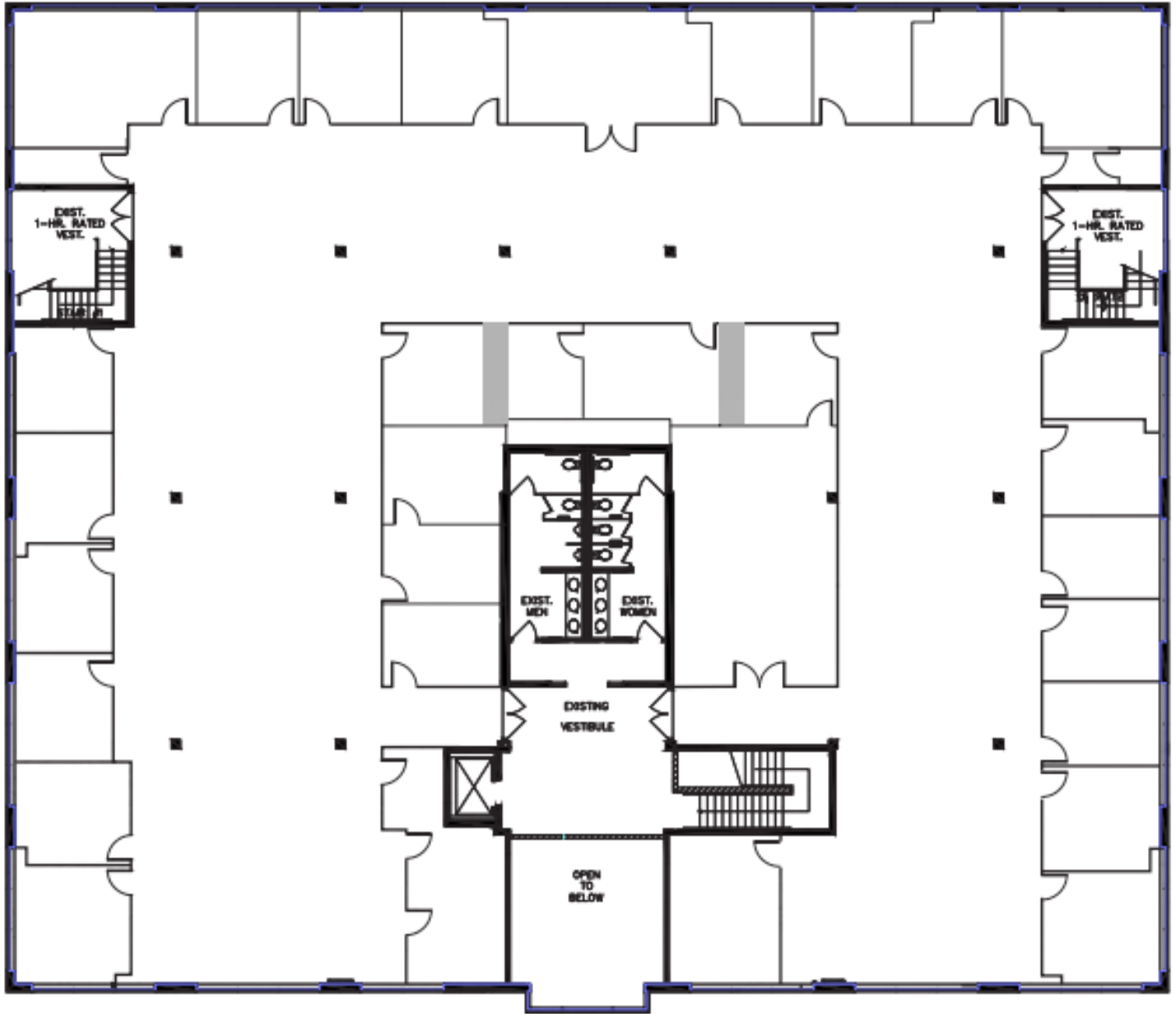


Rob Rader
President
949.500.9391
rob.rader@TopsideRE.com
License # 01373045

Mac Mace
Director
949.922.9889
mac.mace@TopsideRE.com
License # 01956808

Topside
REAL ESTATE
2091 San Joaquin Hills Rd
Newport Beach, CA 92660
TopsideRE.com | 949.674.5110

Suite 200 (\$1.35 PSF, NNN)
±17,282 SF
Divisible to 8,000 SF



Rob Rader
President
949.500.9391
rob.rader@TopsideRE.com
License # 01373045

Mac Mace
Director
949.922.9889
mac.mace@TopsideRE.com
License # 01956808

Topside
REAL ESTATE
2091 San Joaquin Hills Rd
Newport Beach, CA 92660
TopsideRE.com | 949.674.5110