

FOR LEASE - OFFICE/MEDICAL SPACE
1127-1129 CARLING AVENUE



Centrally Located Office/Medical Space Available

1127-1129 Carling Avenue up to 2,666sf (plus basement storage) available

1127-1129 Carling Avenue has 2,666 square feet of office/medical services space, plus basement storage. Located near the central intersection of Carling Avenue and Holland Avenue, a prime location in Ottawa, the building is ideal for professional services- doctors, therapists, lawyers, accountants, engineers.

The property embodies the charm and warmth of a classic Old Ottawa home. Mouldings, divided-light windows, and fireplaces, all add to the ambiance.

The building overlooks the neighbouring scenic experimental farm, allowing everyone to enjoy the majestic landscape view.

Regional Group
1737 Woodward Drive, 2nd
Floor
Ottawa, ON
K2C 0P9

(613) 230-2100

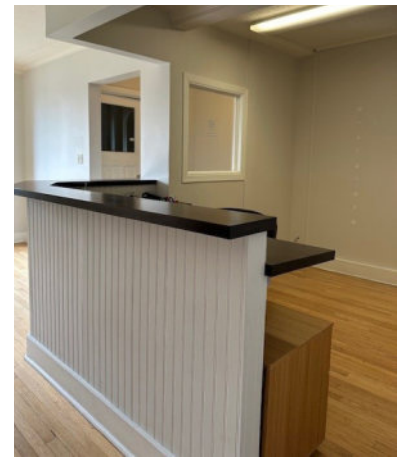
info@regionalgroup.com

Todd Beech
Director, Leasing
(613) 230-2100 x7208
tbeech@regionalgroup.com



Property Highlights

- Home-like atmosphere, ideal for wellness-based or service business.
- Located near Civic Hospital
- Free Parking
- Professionally managed building with 24/7 emergency on-call service
- Centrally located in Ottawa, proximate to several bus routes

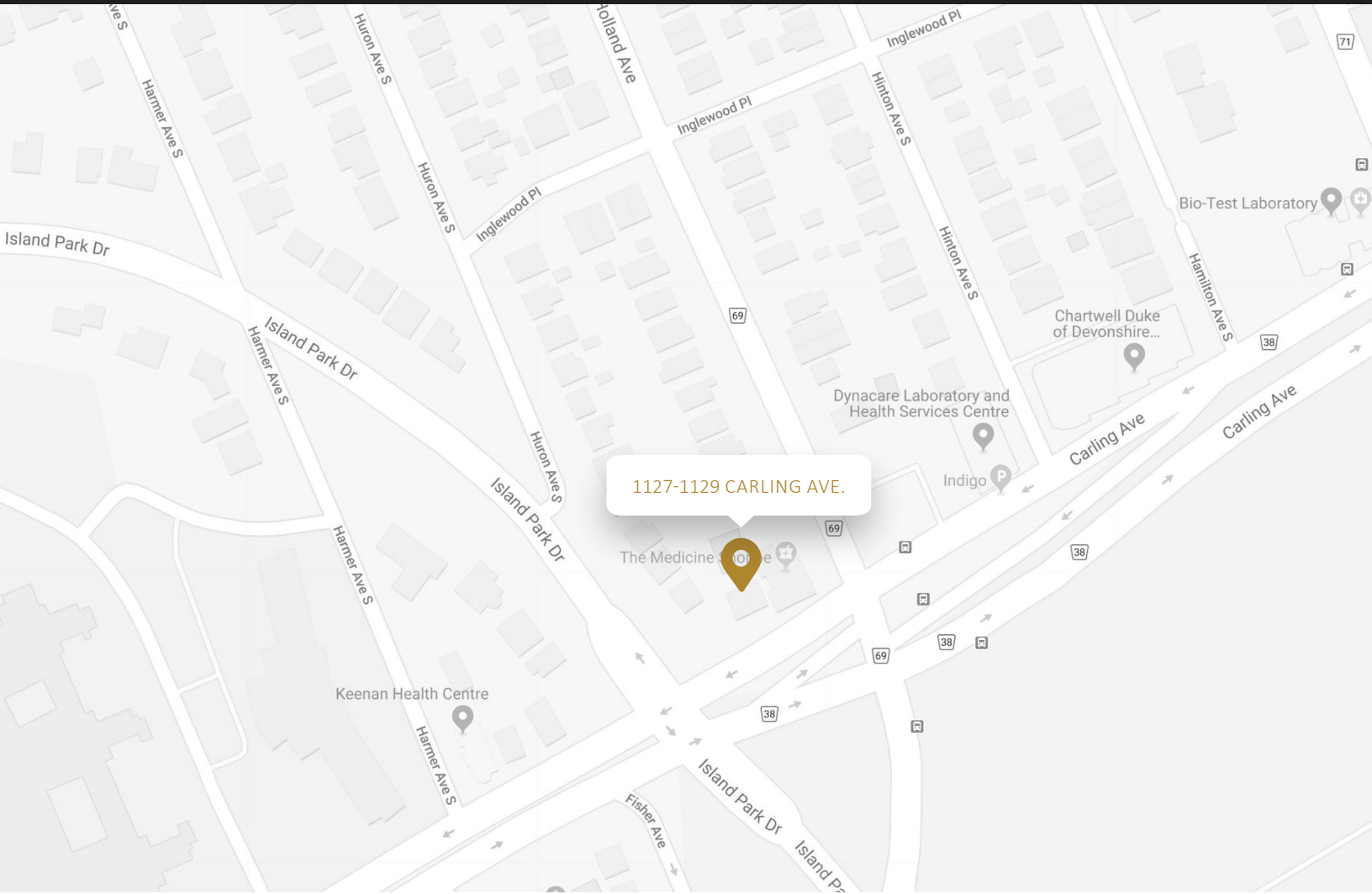


Availability & Rates

Suite	Area (sf)	Gross Rent (PSF)	Additional Rent (PSF)	Availability
Ground & 2 nd floor	2,666	Call for pricing	N/A	Immediate

Basement storage (1,136sf) included at no additional cost

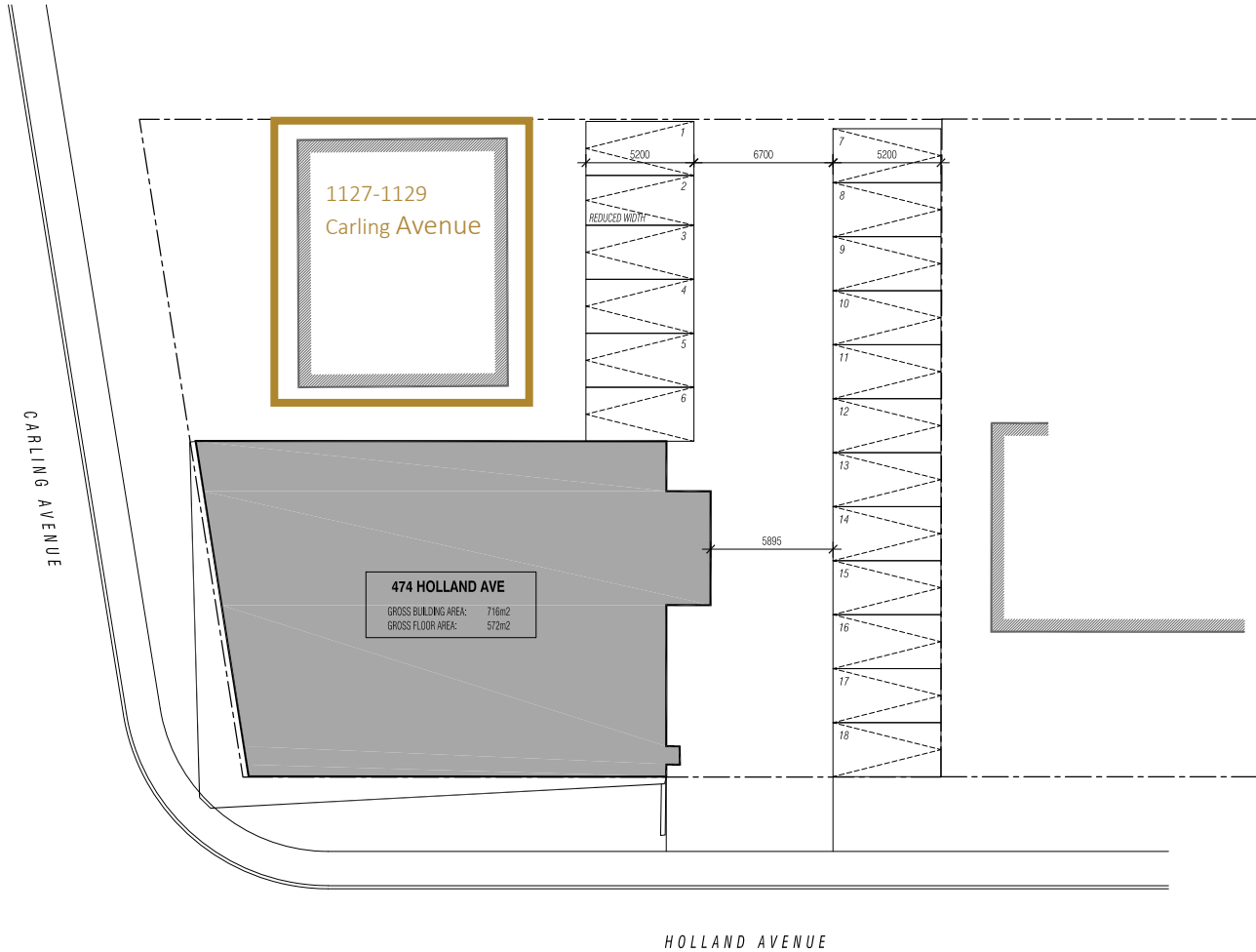
TI Allowance – Negotiable



Property Specifications

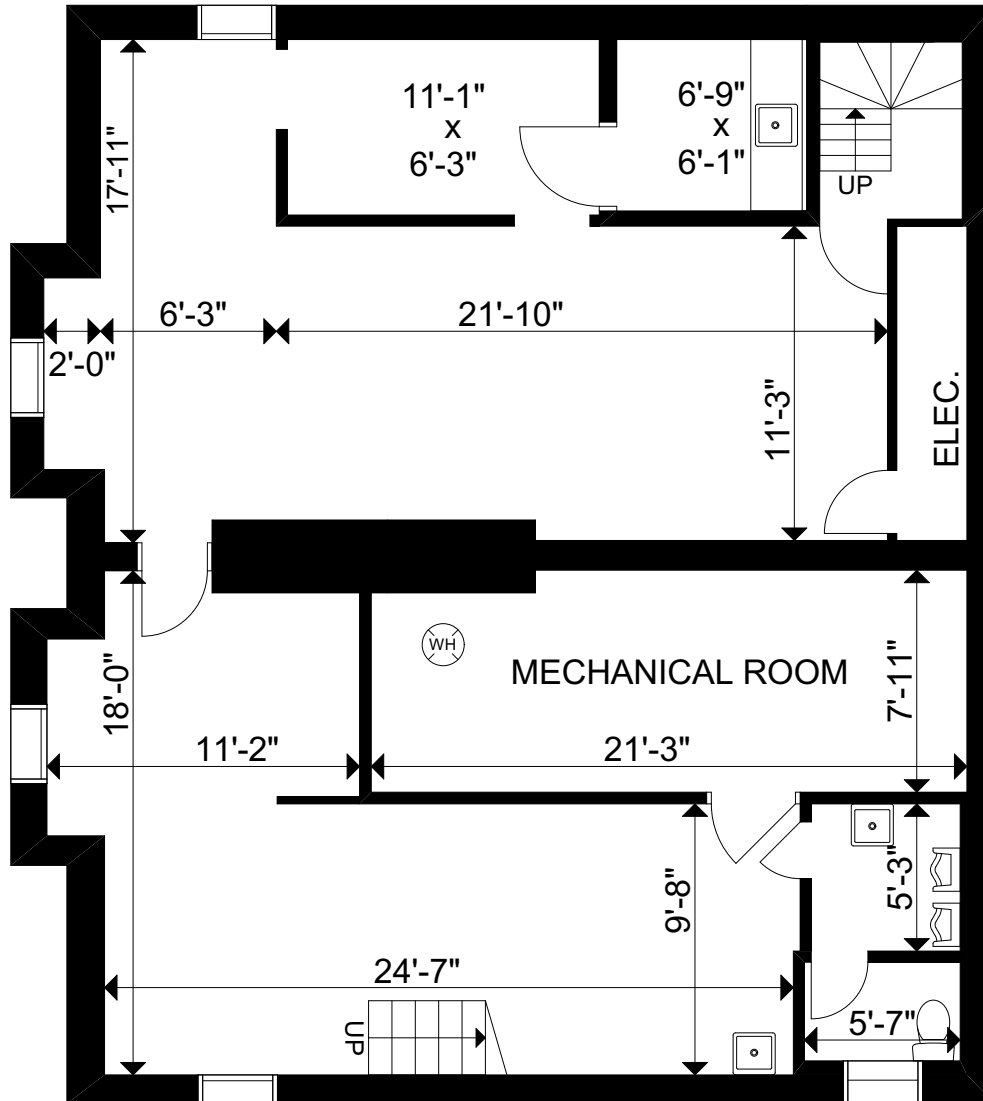
Year Constructed	1940s
Construction	Below grade cast-in-place foundation, wood frame construction
Exterior Walls	Brick, w/masonry veneer and stucco accents
Roof Type	Sloped asphalt
Ceiling Height	8'
Power	200A, 120/240V, 1-phase, 3-wire
Loading Facilities	No
Air Conditioning	125MBH heat pump with 3.5-ton cooling coil/condenser unit
Heat	125MBH Heat Pump with 3.5-ton cooling coil/condenser unit and supplementary baseboards
Sprinklered	No
Parking Spots	18 shared
Elevator	No
Separately Metered	No
Basement	Storage space

Parking Plan



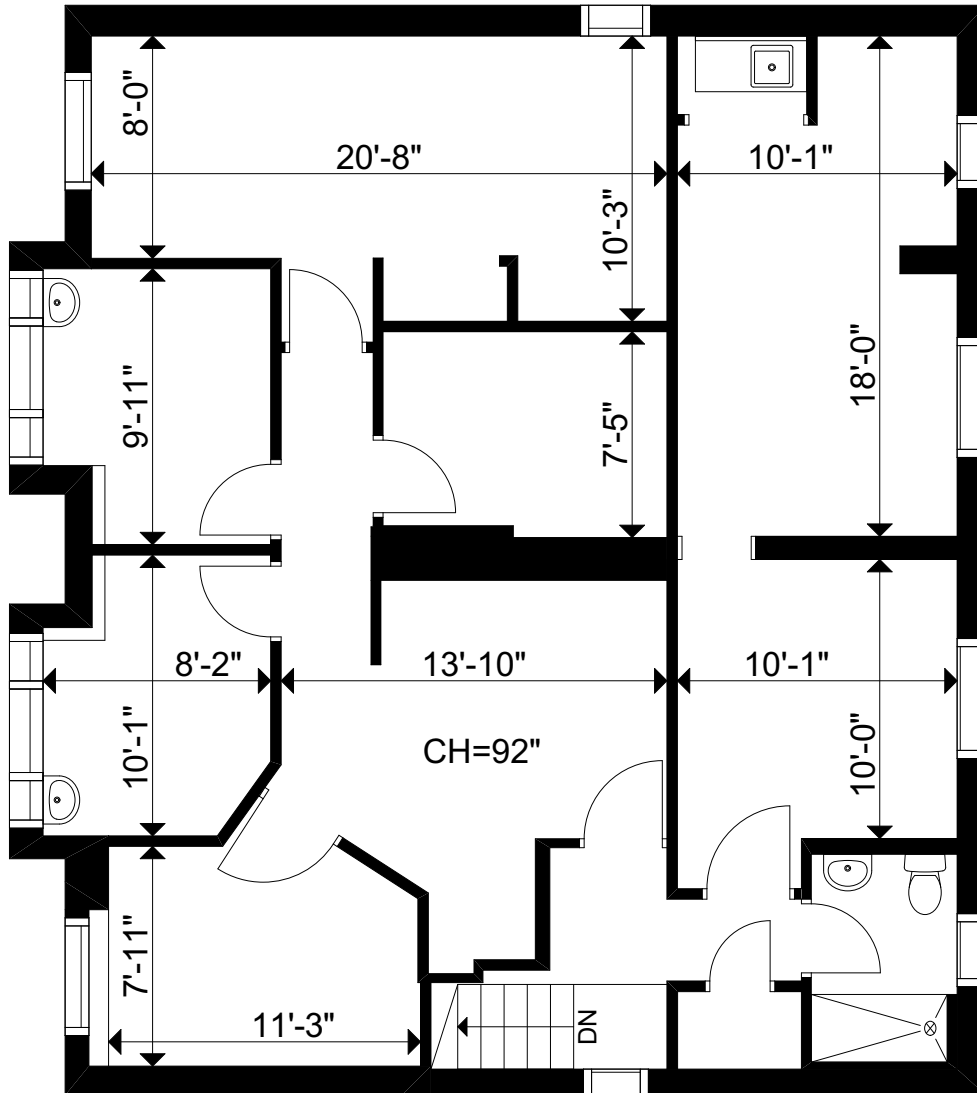
Basement

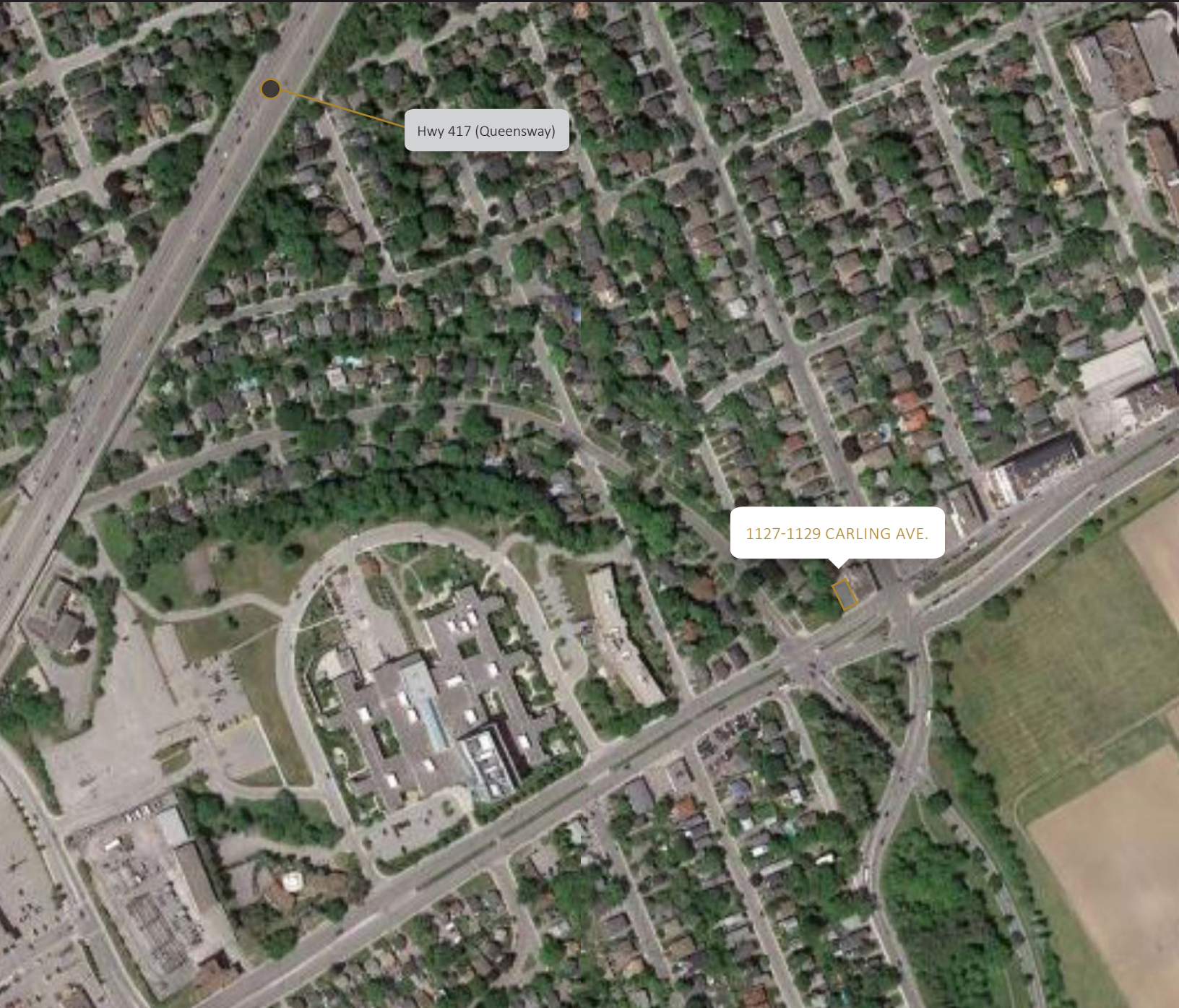
1,136sf



Second Floor

1,333sf





Contact us

Todd Beech
Director, Leasing
(613) 230-2100 x7208
tbeech@regionalgroup.com

Regional Group
1737 Woodward Drive, 2nd Floor
Ottawa, ON
K2C 0P9

(613) 230-2100
info@regionalgroup.com
regionalgroup.com

The information herein contained has not been verified by The Regional Group of Companies Inc. (the 'Agent'). The Agent does not warrant in any manner, implied or otherwise, that the information herein contained is accurate. The Agent does not, and will not, accept or assume any liability for any consequence or result, negative or otherwise, arising from the reliance of the party receiving the information (the 'Recipient') on the information herein contained. It is the sole and exclusive responsibility of the Recipient to independently verify all information herein contained and perform all due diligence as reasonably required. The information herein contained is subject to change and / or alteration without prior notice, and the Agent hereby reserves the exclusive right to remove from the market said information and / or the Property / Space for Lease to which it pertains. The Regional Group of Companies Inc. is acting solely as an agent for its client, and is not acting in its personal or corporate capacity.

