

ROLAND PARK SHOPPING CENTER

4800 Roland Ave, Baltimore, MD 21210

Baltimore City



Amanda DeVinney
adevinney@klnb.com
443-632-2045

Rachel Klein
rklein@klnb.com
443-632-2087

100 West Road, Suite 505
Towson, MD 21204
klnb.com



ROLAND PARK SHOPPING CENTER

4800 Roland Ave, Baltimore, MD 21210
Baltimore City



JOIN

RETAIL FOR LEASE



- Premier retail opportunity located within Baltimore's affluent Roland Park neighborhood.
- Second generation bank space available within iconic shopping center.
- Originally designed by Wyatt & Nolting in the 1890s, the center remains one of the nation's earliest shopping destinations.
- Located at the convergence of Baltimore County and Baltimore City.
- Join curated retail lineup: Petit Louis Bistro, Johnny's, The Pig & The Parrot, Charm City Natural Health.
- Project includes 27,338 SF of office space above ground floor retail.
- 50 surface parking spaces.
- Situated at the intersection of Roland Avenue & Upland Rd (12,710 ADT)
- 3,534 Available 3/1/26

LEASED BY:

klnb

Amanda DeVinney
adevinney@klnb.com
443-632-2045

Rachel Klein
rklein@klnb.com
443-632-2087

100 West Road, Suite 505, Towson, MD 21204
klnb.com

ROLAND PARK SHOPPING CENTER

4800 Roland Ave, Baltimore, MD 21210
Baltimore City

AVAILABLE SPACE:

- 3,534 SF







LOCATION & DEMOGRAPHICS

[DOWNLOAD DEMOGRAPHIC REPORT](#)

TRAFFIC COUNTS | 2024

Roland Ave	12,710 ADT
Falls Road	11,521 ADT

	0.5-MILE	1-MILE	1.5-MILES			
	Population 2,664	14,959	39,341		Households 1,228	5,714 17,359
	Daytime Population 3,172	14,075	44,265		Average Household Income \$233,140	\$161,092 \$143,423

Amanda DeVinney
adevinney@klnb.com
443-632-2045

Rachel Klein
rklein@klnb.com
443-632-2087

100 West Road, Suite 505
Towson, MD 21204
klnb.com



ROLAND PARK SHOPPING CENTER

4800 Roland Ave, Baltimore, MD 21210
Baltimore City

MARKET AERIAL



Amanda DeVinney
adevinney@klnb.com
443-632-2045

Rachel Klein
rklein@klnb.com
443-632-2087

100 West Road, Suite 505
Towson, MD 21204
klnb.com



ROLAND PARK SHOPPING CENTER

4800 Roland Ave, Baltimore, MD 21210
Baltimore City

MID-VIEW AERIAL



VILLAGE OF CROSS KEYS

- Cece's ROLAND PARK
- KNEADS
- Fulton Bank
- WARBY PARKER
- WILLIAMS SONOMA
- bluemercury
- PILATES HOUSE

Baltimore Country Club

ROLAND PARK SHOPPING CENTER

- PETIT LOUIS BISTRO
- THE PIC & THE PARROT
- CVS

Amanda DeVinney
adevinney@klnb.com
443-632-2045

Rachel Klein
rklein@klnb.com
443-632-2087

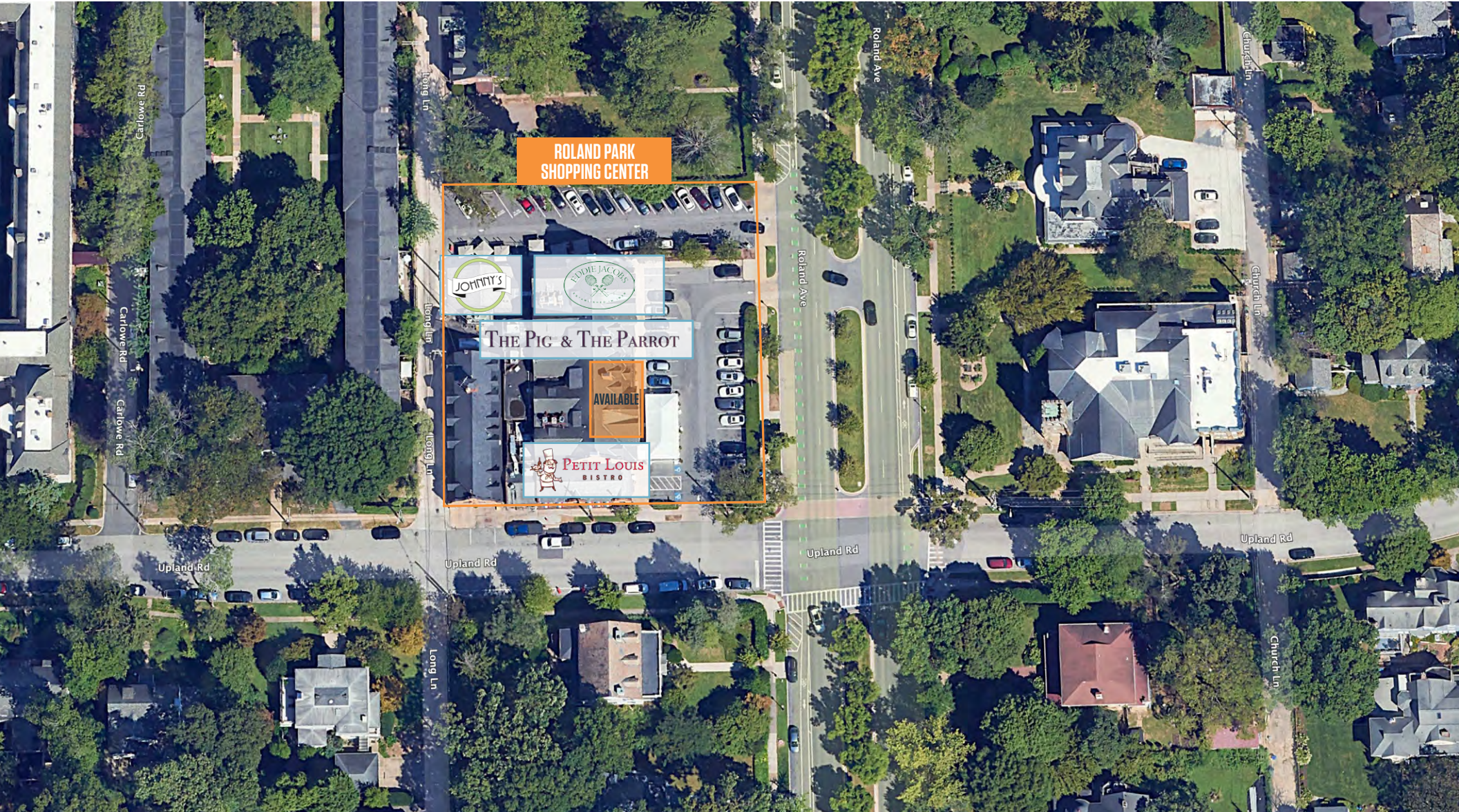
100 West Road, Suite 505
Towson, MD 21204
klnb.com



ROLAND PARK SHOPPING CENTER

4800 Roland Ave, Baltimore, MD 21210
Baltimore City

CLOSE-UP AERIAL



Amanda DeVinney
adevinney@klnb.com
443-632-2045

Rachel Klein
rklein@klnb.com
443-632-2087

100 West Road, Suite 505
Towson, MD 21204
klnb.com

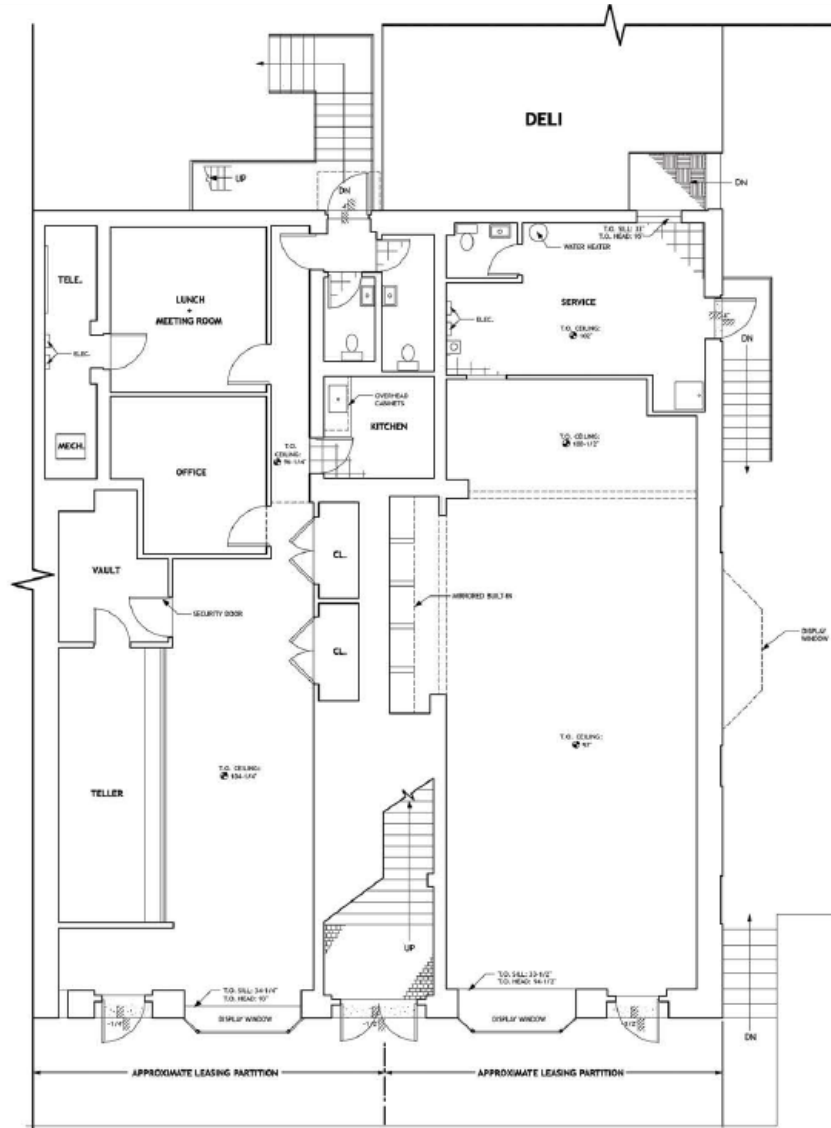
klnb

ROLAND PARK SHOPPING CENTER

4800 Roland Ave, Baltimore, MD 21210
Baltimore City

AVAILABLE SPACE LOD

BANK OF AMERICA



Amanda DeVinney
adevinney@klnb.com
443-632-2045

Rachel Klein
rklein@klnb.com
443-632-2087

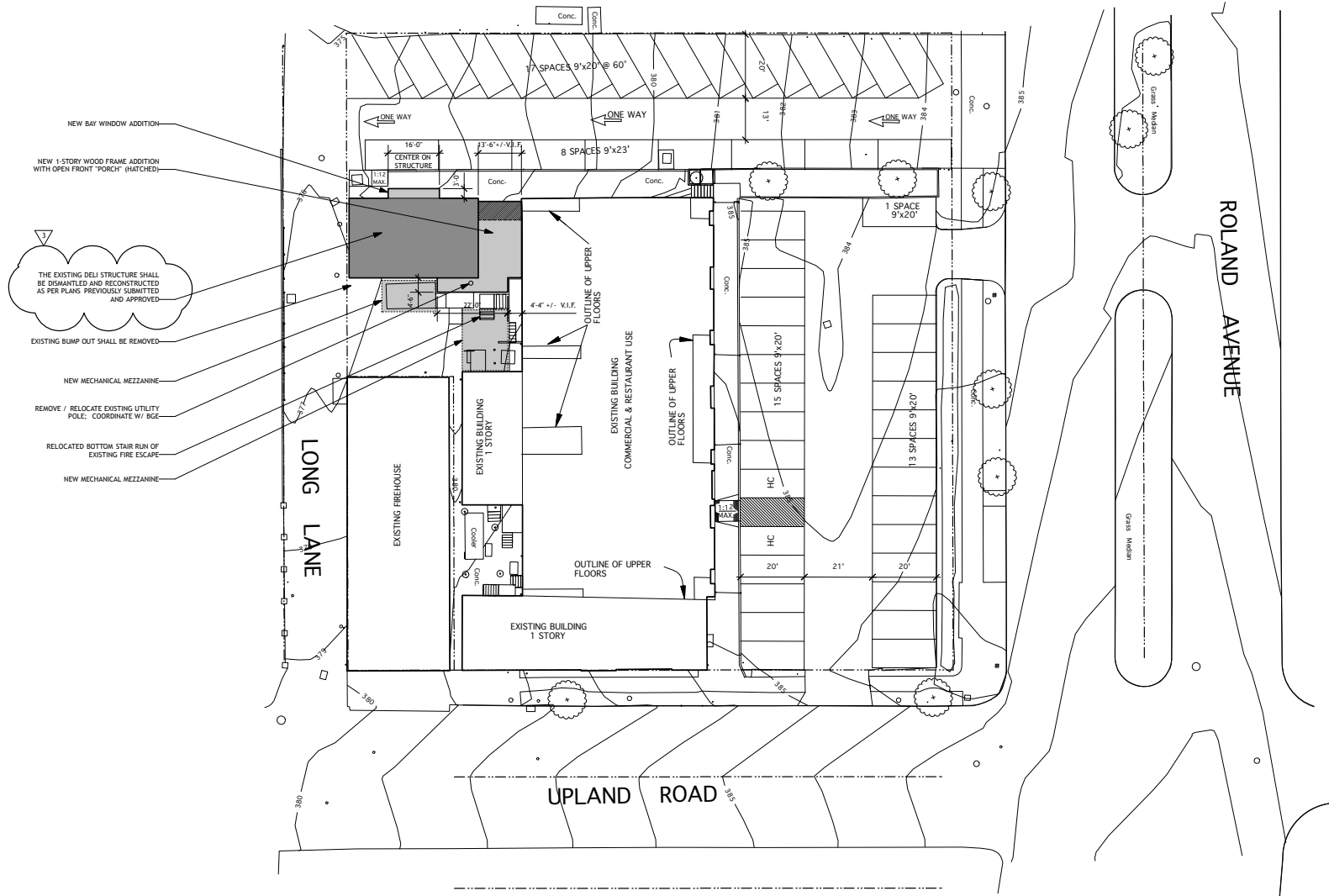
100 West Road, Suite 505
Towson, MD 21204
klnb.com



ROLAND PARK SHOPPING CENTER

4800 Roland Ave, Baltimore, MD 21210
Baltimore City

BUILDING SITE PLAN



ROLAND PARK SHOPPING CENTER

4800 Roland Ave, Baltimore, MD 21210
Baltimore City

PHOTOS



Amanda DeVinney
adevinney@klnb.com
443-632-2045

Rachel Klein
rklein@klnb.com
443-632-2087

100 West Road, Suite 505
Towson, MD 21204
klnb.com



ROLAND PARK SHOPPING CENTER

4800 Roland Ave, Baltimore, MD 21210

Baltimore City

[CLICK TO VIEW PROPERTY WEBSITE](#)

For More Information, Please Contact:

Amanda DeVinney
adevinney@klnb.com
443-632-2045

Rachel Klein
rklein@klnb.com
443-632-2087



While we have no reason to doubt the accuracy of any of the information supplied, we cannot, and do not, guarantee its accuracy. All information should be independently verified prior to a purchase or lease of the property. We are not responsible for errors, omissions, misuse, or misinterpretation of information contained herein and make no warranty of any kind, express or implied, with respect to the property or any other matters.

100 West Road, Suite 505
Towson, MD 21204
klnb.com

