

Worlds Fair Corporate Center

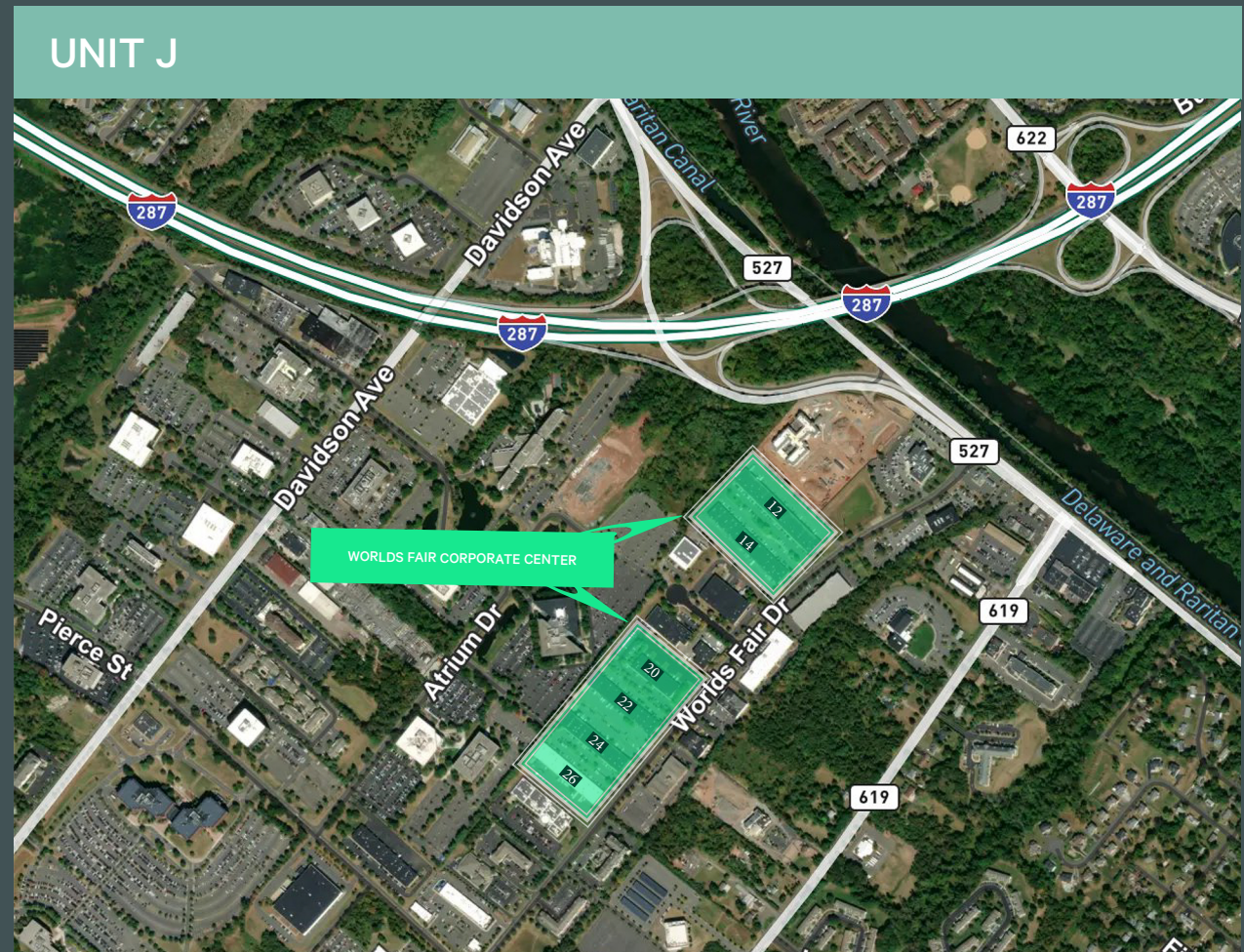
14 Worlds Fair Drive
Somerset, NJ 08873

Specifications

Total SF Available:	+5,000 sq. ft.
Office SF:	+2,210 sq. ft.
Warehouse SF:	+2,790 sq. ft.
Year Built:	1981
Ceiling Height:	18'
Loading:	1 tailboard door
Power:	200 amps
Sprinkler:	Wet system
Est. Taxes & CAM:	\$5.60 PSF
Occupancy:	30-60 days

Contact Us

Robert Pine
Senior Vice President
O: +1 732 509 2830
M: +1 973 202 4447
robert.pine@cbre.com



Worlds Fair Corporate Center

14 Worlds Fair Drive | Somerset, NJ 08873

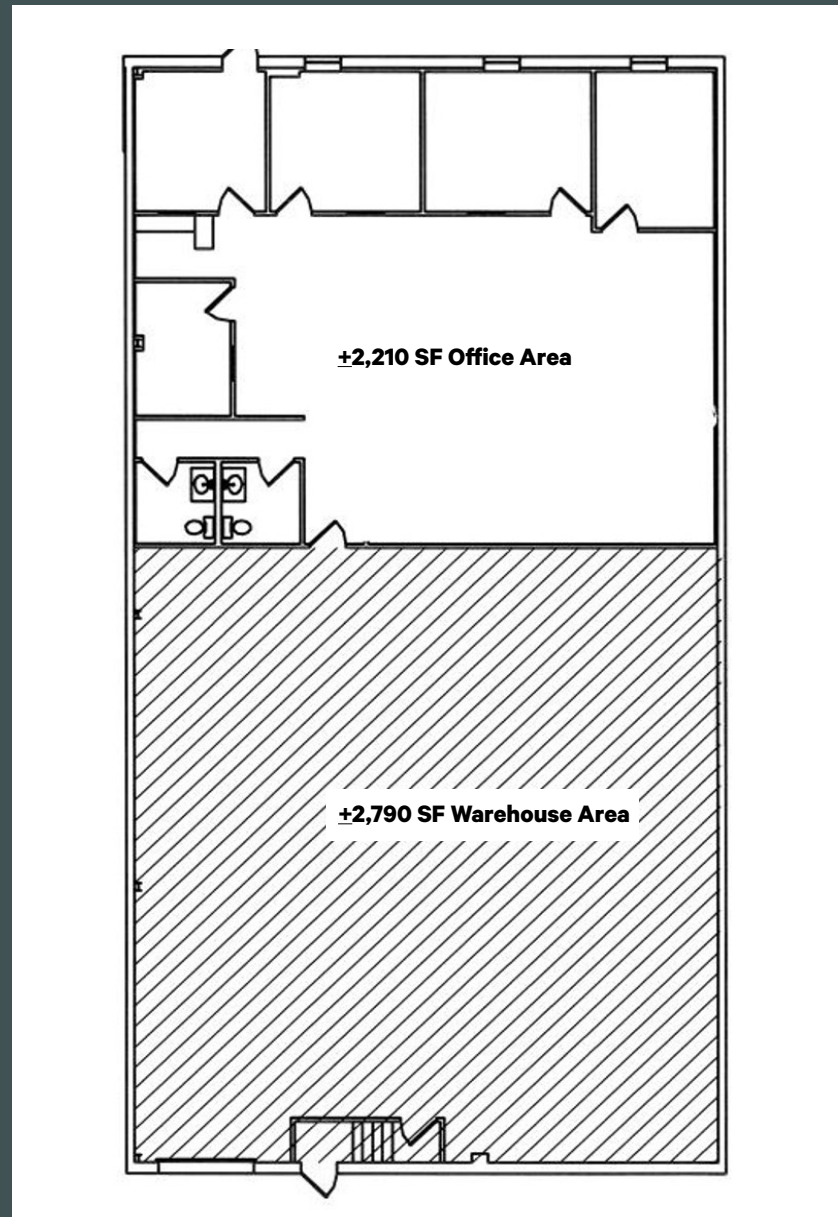
For Lease

Floor Plan

- + Unit J: \pm 5,000 sq. ft. available
- + Office: \pm 2,210 sq. ft.
- + Warehouse: \pm 2,790 sq. ft.

Comments

- + 1 per 1,000 car parking
- + T-5 lighting
- + Occupancy: 30-60 days
- + Access to:
 - I-287
 - Route 27
 - New Jersey Turnpike
 - Garden State Parkway



© 2026 CBRE, Inc. All rights reserved. This information has been obtained from sources believed reliable, but has not been verified for accuracy or completeness. You should conduct a careful, independent investigation of the property and verify all information. Any reliance on this information is solely at your own risk. CBRE and the CBRE logo are service marks of CBRE, Inc. All other marks displayed on this document are the property of their respective owners, and the use of such logos does not imply any affiliation with or endorsement of CBRE. Photos herein are the property of their respective owners. Use of these images without the express written consent of the owner is prohibited.

CBRE