

# SAN LUIS REY PLAZA

73-705, 73-725, 73-745 El Paseo, Palm Desert, CA

BOUTIQUE MIXED-USE-OFFICE/RETAIL

## *Office Space Available For Lease*

*Surrounded by luxury retail tenants, fine dining,  
and walking distance to The Gardens on El Paseo*





**73-705, 73-725, 73-745 El Paseo  
Suite 21D and 23C**

Private offices in a multi-tenant retail and office complex. Ample parking for tenants and clients located 1 block from The Gardens on El Paseo.

**WALK SCORE®  
Very Walkable (84)**

San Luis Rey Plaza is a boutique Mixed-Use- Retail and Office property located at 73-705, 73-725, 73-745 El Paseo, in Palm Desert, CA, and composed of approximately 33,853 square feet. Tenants include Columbia Bank, Mama Gina's Italian Restaurant, Thai Smile Restaurant and various service oriented office and retail high-end destination retail corridor of El Paseo at the SWC of El Paseo and San Luis Rey Avenue. The site see approximately 33,246 cars per day and benefits from heavy foot traffic from both local and tourists. El Paseo is considered the "Rodeo Drive" of the desert, and has over 300 shops along this mile long shopping district.

## area retailers

**Jensen's**  
MAKE EVERY DAY AN OCCASION™

**Bank of America**



**CLB** CALIFORNIA BANK  
Trust

**Orangetheory**  
FITNESS

**SULLIVAN'S**  
STEAKHOUSE

**jenny**  
CRAIG

**MASTRO'S**  
STEAKHOUSE  
**M**

**LUNA Grill**  
fresh mediterranean

*and many more...*

# property features



**Rental Rate:** Contact Agent for Lease Terms and Rates



**Parking:** 119 Spaces



**Zoning:** C-1, S.P.



**Frontage:** 455' on El Paseo, 291' on San Luis Rey



**GLA:** 33,853 SF



**Total Land Area:** 2.03 AC



**Access:** 24 Hour Access



**Year Built:** 1980



Join Columbia Bank. In Close Proximity to Ristorante Mamma Gina & Thai Smile Restaurant. Easy Access to Parking. Available Call broker for more information.

# on site tenants



# site plan

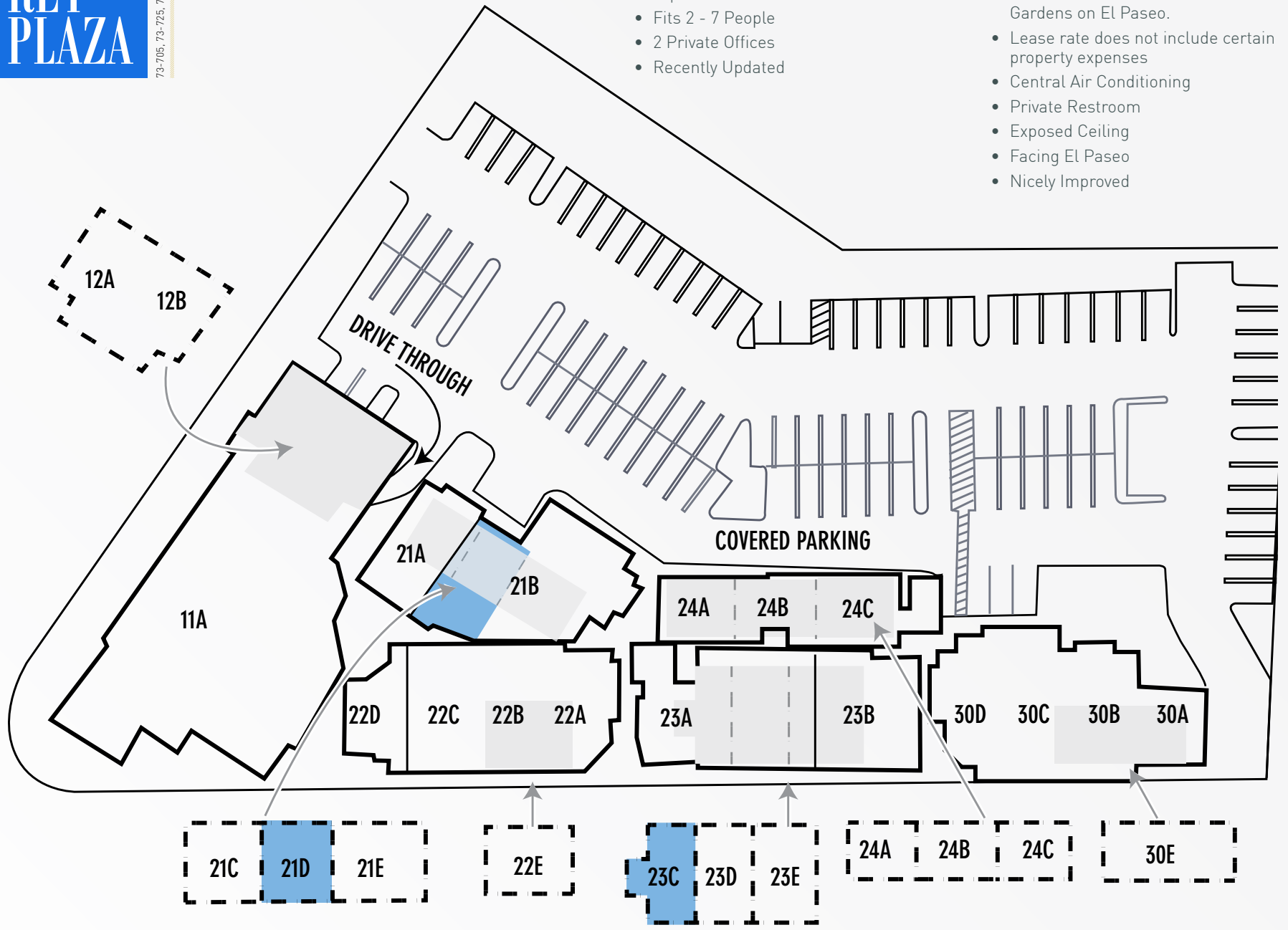
73-705, 73-725, 73745 El Paseo

**Suite 21D**

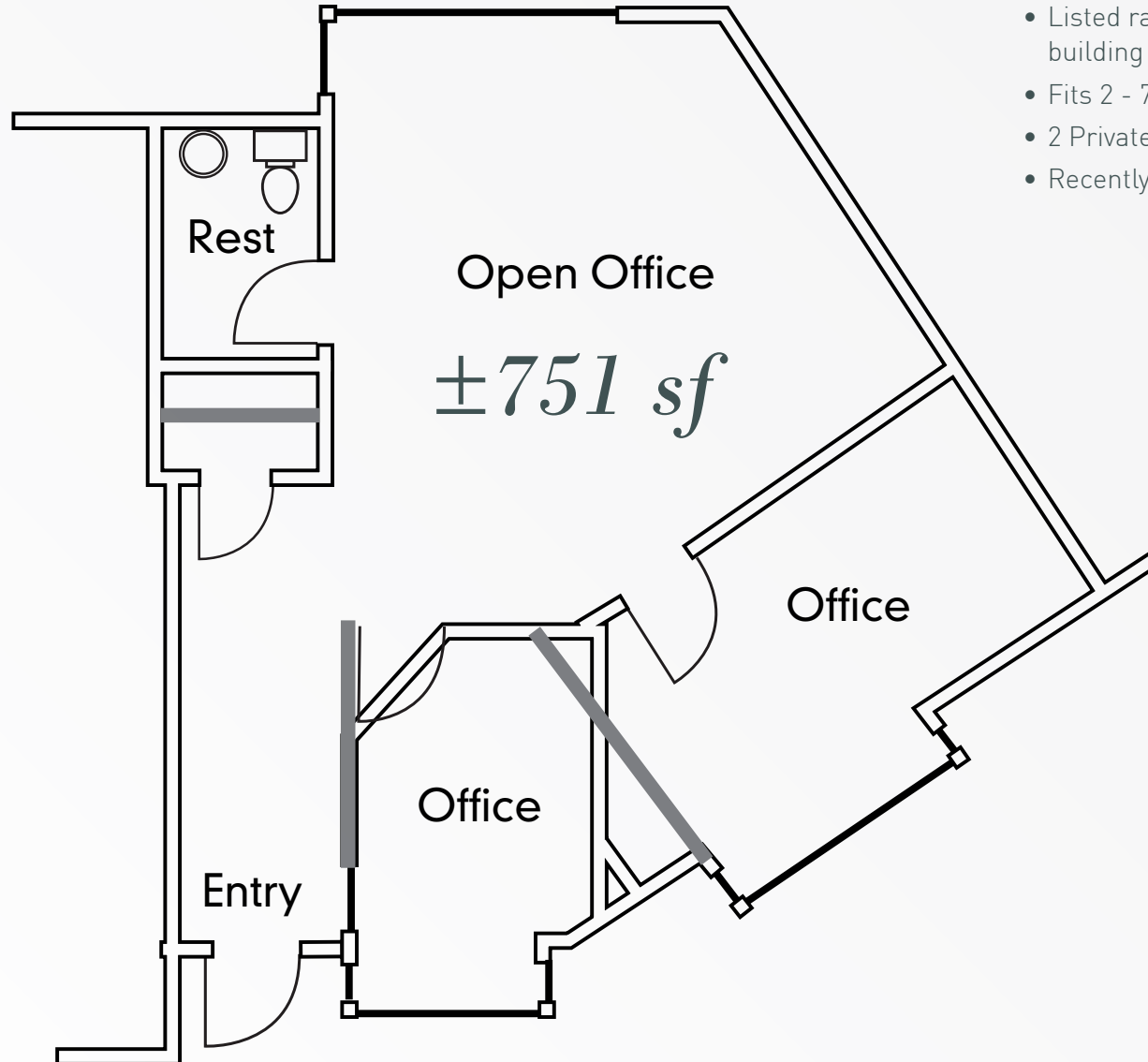
- Listed rate may not include certain utilities, building services and property expenses
- Fits 2 - 7 People
- 2 Private Offices
- Recently Updated

**Suite 23C**

- Private office in a multi-tenant retail and office complex. Ample parking for tenants and clients located 1 block from The Gardens on El Paseo.
- Lease rate does not include certain property expenses
- Central Air Conditioning
- Private Restroom
- Exposed Ceiling
- Facing El Paseo
- Nicely Improved

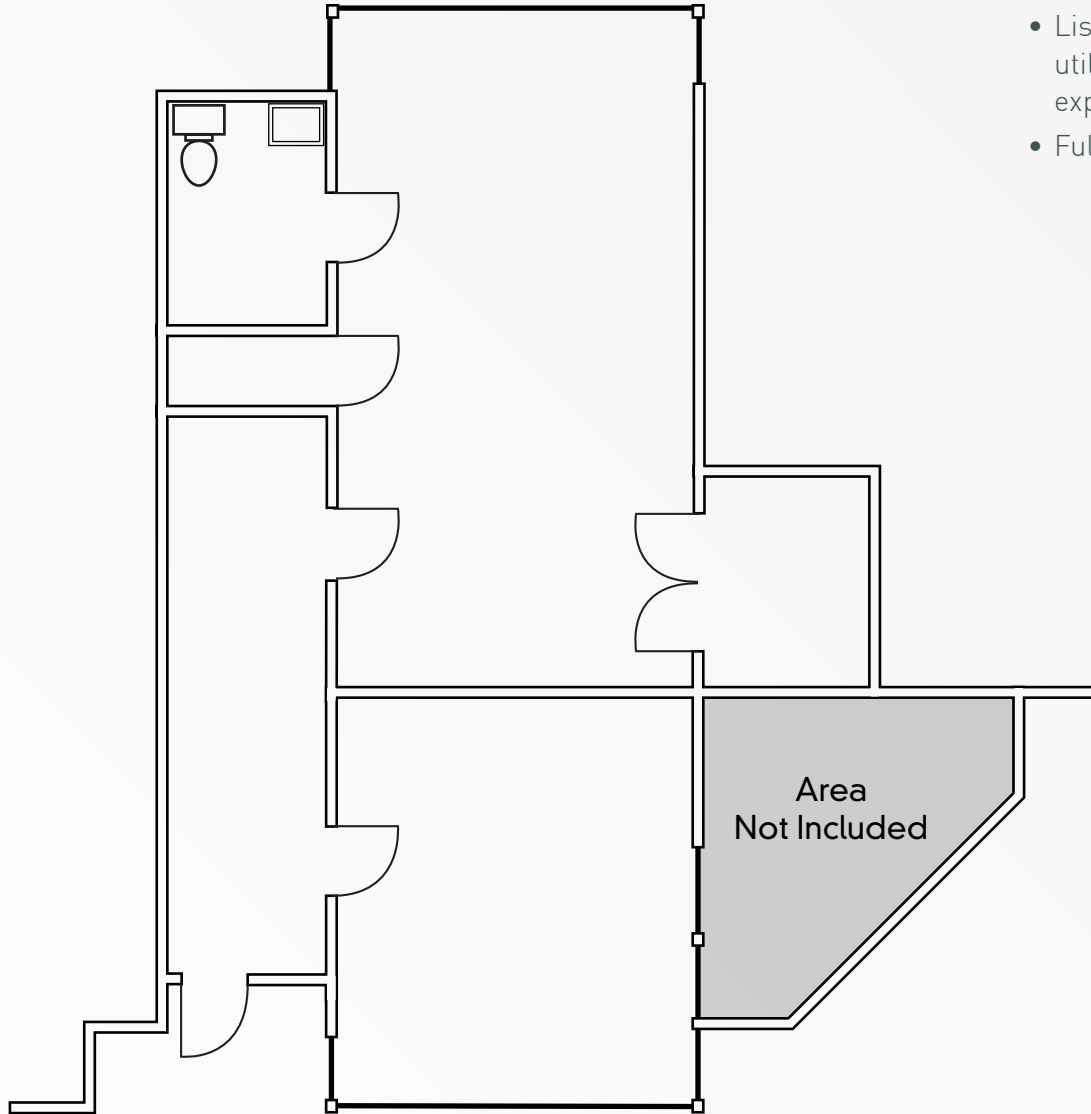


# 73-705, 73-725, 73-745 *El Paseo* *Suite 21D* *availabilities*



- Listed rate may not include certain utilities, building services and property expenses
- Fits 2 - 7 People
- 2 Private Offices
- Recently Updated

# 73-705, 73-725, 73-745 *El Paseo* *Suite 23c* *availabilities*



- Listed rate may not include certain utilities, building services and property expenses
- Full Build-out



# SAN LUIS REY PLAZA

Westfield Palm Desert Mall  
Bath & Body Works

HomeGoods  
NORDSTROM  
rack  
WHOLE FOODS

FOREVER 21  
DICK'S  
Foot Locker  
JCPenney  
Sears  
BARNES & NOBLE  
macy's

chico's RALPH LAUREN  
California  
ESCADA  
STUART WEITZMAN  
Wolfgang Puck

Jensen's SHOPPING CENTER  
Jensen's FISH GRILL  
AutoZone THE BODY DELI  
Jeffrey Allen Salon Palm Desert  
Dairy Blue Mephisto  
Dianna's

SAN LUIS REY PLAZA  
737-705-7375, 737-45 El Paseo, Palm Desert, CA

Town Center Way  
111  
39,000 sq ft

Monterey Ave

Parkview Dr.

Highway 111

San Pablo Ave

Larkspur Lane

VONS

KREISS

ST. JOHN BY MARIE GRAY  
DAILY GRILL GUCCI  
BURBERRY

Brighton  
EILEEN FISHER  
WHITE HOUSE BLACK MARKET

BANANA REPUBLIC Apple  
Lucky Brand COACH  
MASTRO'S STEAKHOUSE bebe  
kate spade

ANTHROPOLOGIE  
GARDENS TIFFANY & Co.  
WOODFIRE SAMMY'S PIZZA & GRILL  
LOUIS VUITTON Tommy Bahama  
SEPHORA  
SAKS FIFTH AVENUE SULLIVAN'S ANN TAYLOR  
POTTERY BARN TRUE RELIGION

EL PASEO HOTEL

Contact:

**Todd Leger, CPM**  
BRE #01164011  
(310) 373-2797 Ext. 2  
tleger@graziadio.net

© 2026 | Commerce Realty | The information being provided by Commerce Realty and/or its sources is deemed reliable. While we have no reason to doubt its accuracy, we do not guarantee it. Any information, measurements, facts and actual drawings shown are approximate, subject to change, or withdrawal without notice and should be independently verified by you and may not be relied upon as a precise representation by this office. No warranties or representations are made as to the condition of the property or any hazards contained therein nor any to be implied.

**COMMERCE REALTY**  
A GRAZADIO ENTERPRISE

BRE # 01519327  
149 Palos Verdes Boulevard, Suite E  
Redondo Beach, CA 90277  
(310) 373- 2797 | www.graziadio.net