

# BURGER KING DRIVE THRU

7201 S FIGUEROA ST  
LOS ANGELES, CA 90003

*A ±2,828 SF retail space near  
Los Angeles International Airport,  
ideal for drive thru use*

±2,828 SF total

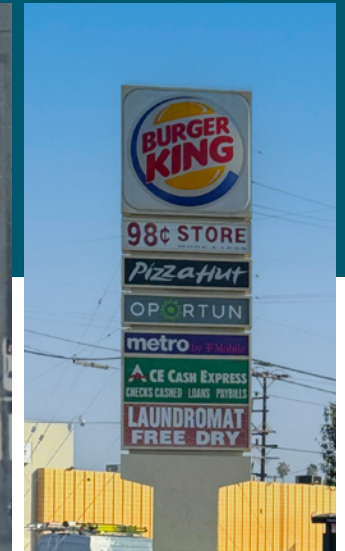
Busy traffic lights corner with ±25,468  
CPD on Figueroa St and Florence Ave

Drive thru (up to 10 car stacks)

Ample parking - 51 surface spaces

Great visibility and easily accessible

Signage available



*Call Broker for Details*

**JOSEPH KIM**  
Senior Vice President  
949.557.5062 | joseph.kim@kidder.com  
LIC N° 01463895

**KIDDER.COM**

This information supplied herein is from sources we deem reliable. It is provided without any representation, warranty, or guarantee, expressed or implied as to its accuracy. Prospective Buyer or Tenant should conduct an independent investigation and verification of all matters deemed to be material, including, but not limited to, statements of income and expenses. Consult your attorney, accountant, or other professional advisor. All Kidder Mathews designs are the sole property of Kidder Mathews. Branded materials and layouts are not authorized for use by any other firm or person.



16 MIN

SOFI STADIUM / KIA FORUM

22 MIN

DOWNTOWN LOS ANGELES

25 MIN

LOS ANGELES INTERNATIONAL AIRPORT

For more information, contact

JOSEPH KIM

Senior Vice President

949.557.5062

joseph.kim@kidder.com

LIC N° 01463895



KIDDER.COM

This information supplied herein is from sources we deem reliable. It is provided without any representation, warranty, or guarantee, expressed or implied as to its accuracy. Prospective Buyer or Tenant should conduct an independent investigation and verification of all matters deemed to be material, including, but not limited to, statements of income and expenses. Consult your attorney, accountant, or other professional advisor. All Kidder Mathews designs are the sole property of Kidder Mathews. Branded materials and layouts are not authorized for use by any other firm or person.