

- Negotiable rent & term
- Fixed increases, no pass-through surprises
- Renovated garage and common areas
- Prime location

- On-site banking



- Covered parking - \$85.00 per space per month

- Available on-site storage

- On-site management

- Access control by Datawatch

For more details or to arrange a tour, please call:

**301.961.9696**

**Jack Alexander**  
Ext. 207

[jalexander@amrcommercial.com](mailto:jalexander@amrcommercial.com)

# SPEC SUITES AVAILABLE

## 1,000+/-R.S.F. to 2,904+/-R.S.F.



**5272 River Road**  
**Bethesda, Maryland 20816**

**WALK TO**

**Dining ♦ Grocery ♦ Cleaners and MORE!**



**GEORGETOWN BAGELRY**  
Artisan Bakers Since 1981



**Tatte**  
BAKERY & CAFÉ



ALEXANDER, MONTROSE, RITTENBERG  
Commercial Real Estate Brokerage  
Est. 1994

Celebrating  
**32**  
Years  
1994-2026

Although all information is furnished regarding for sale, rental or financing is from sources we deem reliable, such information has not been verified and no express representation is made nor is any to be implied as to the accuracy thereof, and it is submitted subject to errors, omissions, changes of price, rental or other conditions, prior sale, lease or financing or withdrawal without notice.

4849 Rugby Avenue ♦ Suite 200 ♦ Bethesda, Maryland 20814 ♦ 301.961.9696 ♦ Fax 301.656.7551

[www.amrcommercial.com](http://www.amrcommercial.com) ♦ [info@amrcommercial.com](mailto:info@amrcommercial.com)

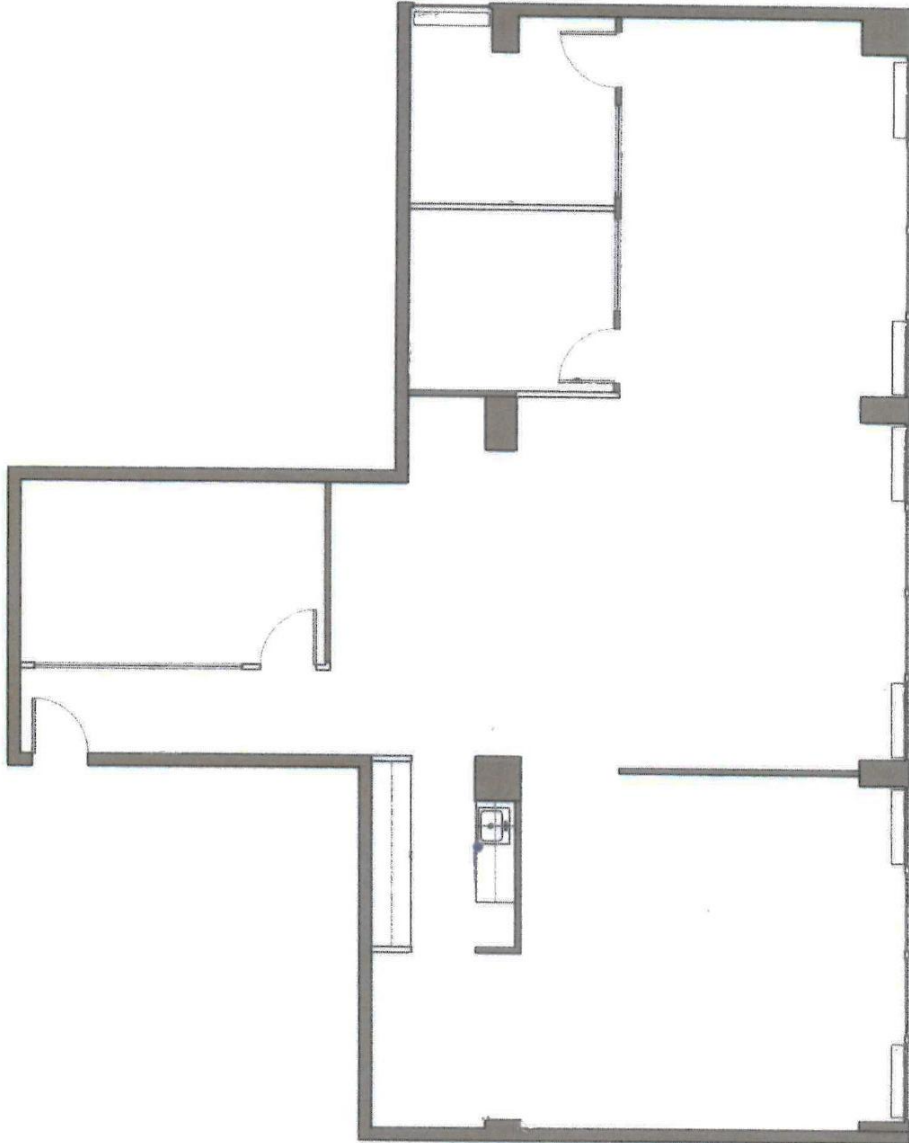
# KENWOOD BUILDING

**5272 River Road**

**Bethesda, Maryland 20816**

**Suite 500**

**2,188 R.S.F.**



NOT TO SCALE | MEASUREMENTS APPROXIMATE

Although all information furnished is from sources we deem reliable, such information has not been verified and no express representation is made, nor is any to be implied, as to the accuracy thereof, and it is submitted subject to errors, omissions, changes of price/rental or other conditions prior to sale or lease, and subject to withdrawal without notice.