

717-727 W 14TH ST LONG BEACH, CA 90813

INDUSTRIAL FOR LEASE

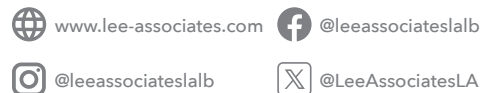


Copyright © Lee & Associates. All rights reserved. No part of this work may be reproduced or distributed without written permission of the copyright owner. The information contained in this report was gathered by Lee & Associates from sources believed to be reliable. Lee & Associates, however, makes no representation concerning the accuracy or completeness of such information and expressly disclaims any responsibility for any inaccuracy contained herein.

GAVIN GILL

Associate | DRE LIC 01936303
e gavingill@leelalb.com
p 562.354.2529

CONNECT WITH US ON OUR SOCIALS!



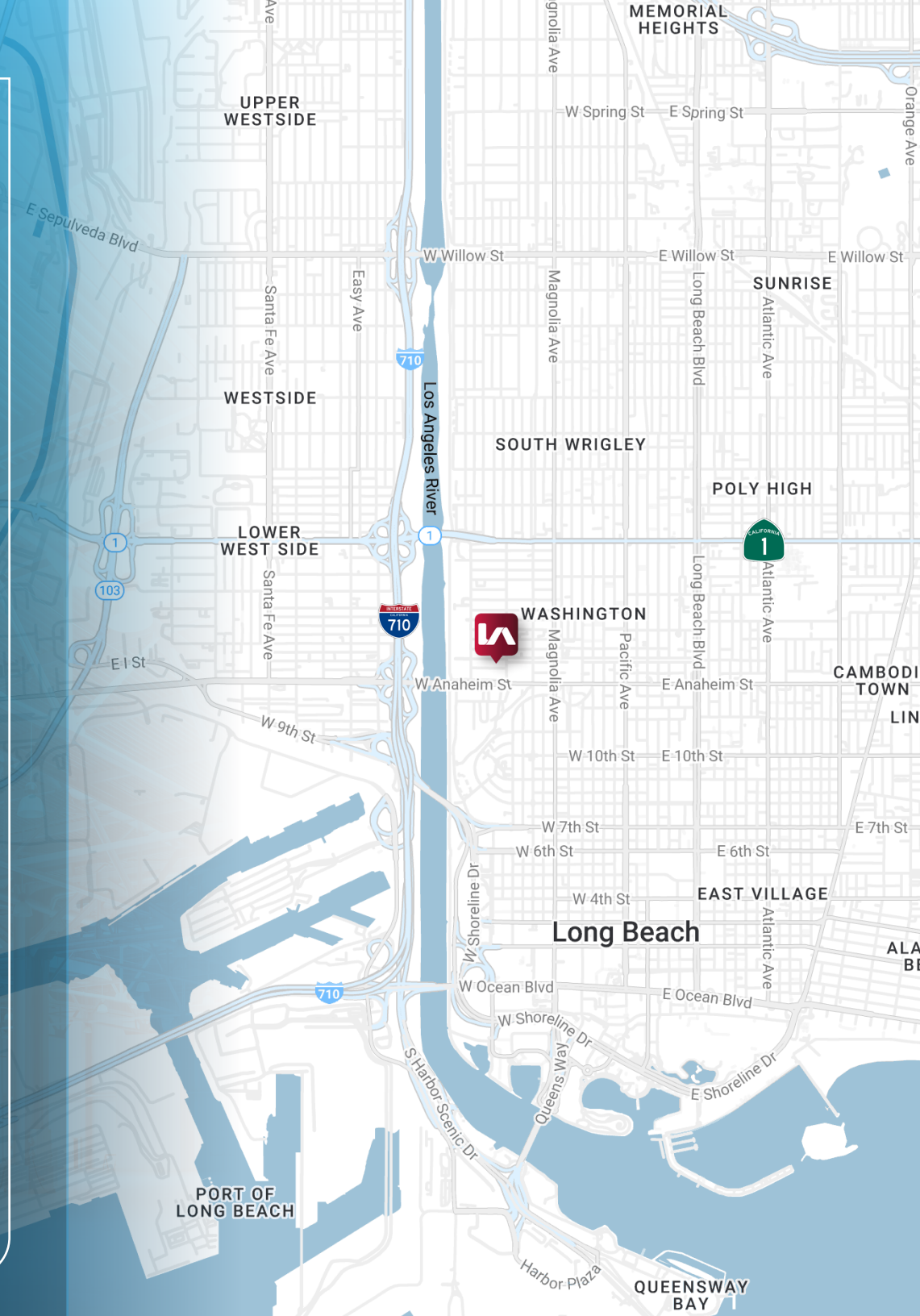
Lee & Associates Los Angeles-Long Beach, Inc.
5000 E Spring Street, Suite 600, Long Beach, CA 90815

PH: +1 (562) 354-2500
www.lee-associates.com

**LEE &
ASSOCIATES**
COMMERCIAL REAL ESTATE SERVICES

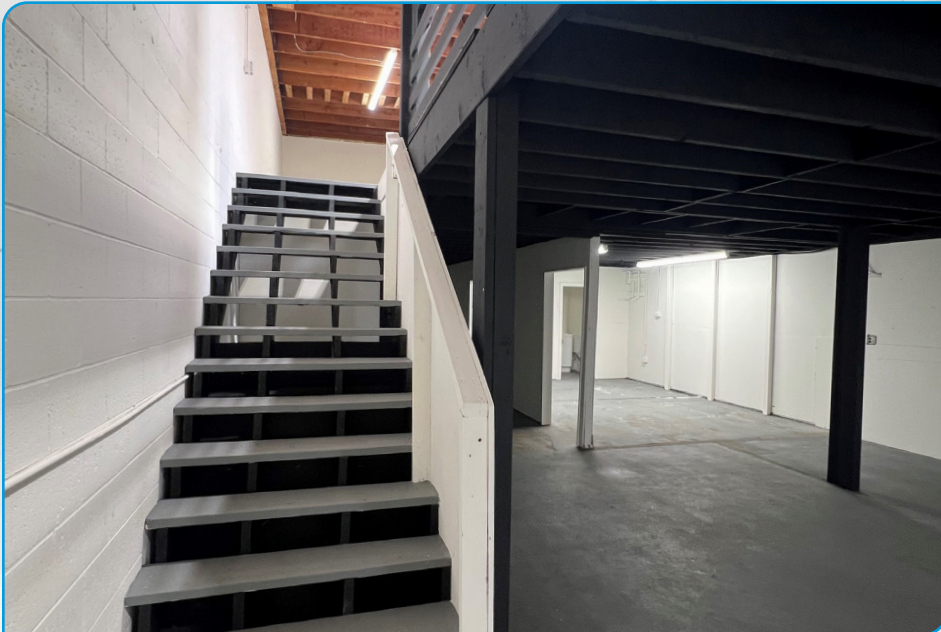
PROPERTY HIGHLIGHTS

- **Building Size:** 11,000 SF
- **Land Area:** 14,344 SF (0.33 Acres)
- **Zoning:** LBIG
- **Lease Rate / SF:** \$1.50 MG
- **Available Suites:**
 - **Unit 717-B**
 - » 1,350 SF Available
 - » New Lighting wih Skylight, Move-in Ready
 - » One (1) Ground Level Door
 - » Bonus 800 SF Mezzanine
 - » Lease Rate / Mo.: \$2,025.00
 - **Unit 721-A**
 - » 1,350 SF Available
 - » Front Unit
 - » Lease Rate / Mo.: \$2,025.00
 - **Unit 721-A+B**
 - » Contiguous Units
 - » 2,700 SF Total Available
 - » Lease Rate / Mo.: \$4,050.00
- **16' Clear Height**
- **Easy Access To 710 FWY And Ports Of Long Beach/ Los Angeles**



UNIT 717-B

717-727 W 14TH ST
LONG BEACH, CA 90813





717-727 W 14TH ST, LONG BEACH, CA 90813

INDUSTRIAL FOR LEASE

GAVIN GILL

Associate | DRE LIC 01936303
e gavingill@leelalb.com
p 562.354.2529

CONNECT WITH US ON OUR SOCIALS!



www.lee-associates.com



@leeassociateslab



@leeassociateslab



@LeeAssociatesLA

Lee & Associates Los Angeles-Long Beach, Inc.
5000 E Spring Street, Suite 600, Long Beach, CA 90815

PH: +1 (562) 354-2500
www.lee-associates.com



COMMERCIAL REAL ESTATE SERVICES