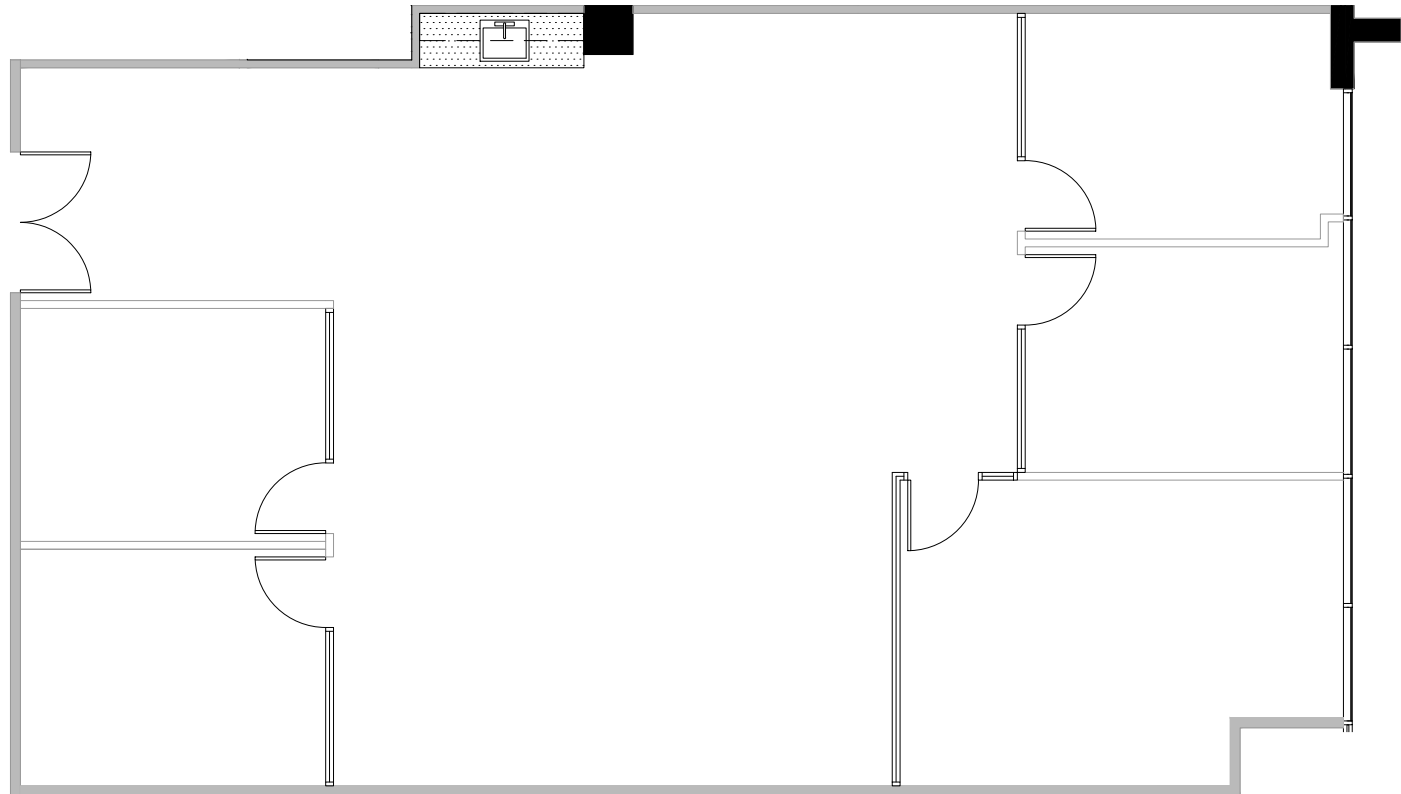


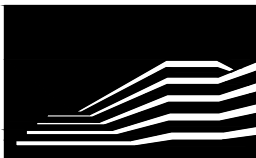
AREA OF WORK

KEY PLAN - N.T.S.



Continental Park

Continental Development Corporation
2041 Rosecrans Ave. Suite 200
El Segundo, CA 90245
T: 310.640.1520
www.continentaldevelopment.com



Suite 165 - 2,257 RSF

880 Apollo St.
1st Floor, Suite 165
El Segundo, CA 90245

Drawn on: 10/16/2024